

# Connecting from Windows 10 to your office computer using the SFU Remote Desktop Gateway

---

## Background

Remote Desktop essentially connects you to your office computer by sending an image of your office desktop to your off-campus computer along with control for the mouse and keyboard. Remote desktop alone is considered moderately secure. The SFU Remote Desktop Gateway server augments this security by providing a secure connection channel for Remote Desktop (using SSL - similar to a bank's secure site for online banking) to the SFU network. FHS IT recommends all users connect to their desktop computers using the SFU Remote Desktop Gateway service. Read on for setup instructions.

## Prerequisites *(please read carefully)*

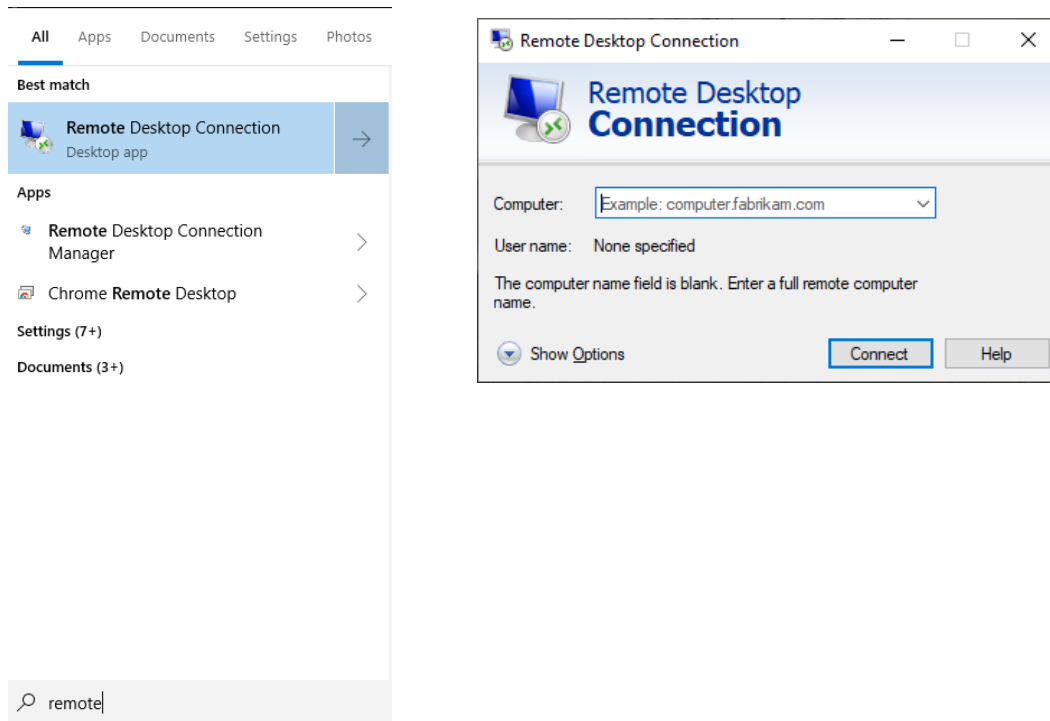
1. Your office computer must be ON.
2. Know your office computer name. On your office computer, type **Control Panel** in the search bar, then open the **Control Panel app**. Open the **System** item, and then look for the **Full computer name** in the Computer name, domain, and workgroup settings section.

Record the 'Full computer name' here: \_\_\_\_\_

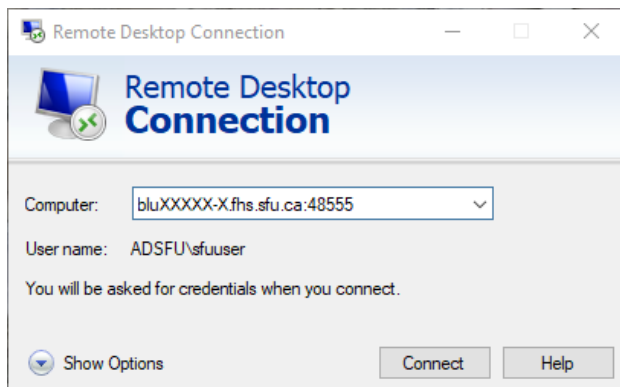
3. Your remote (off-campus) computer must be running Windows 10 or a compatible RDP Client that supports the gateway feature

## Connecting

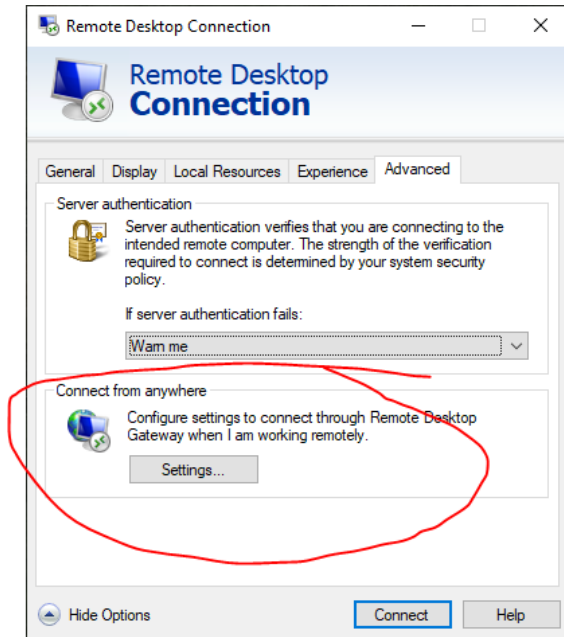
1. Open the **Remote Desktop Connection** application by typing 'remote' into the Windows Start search box



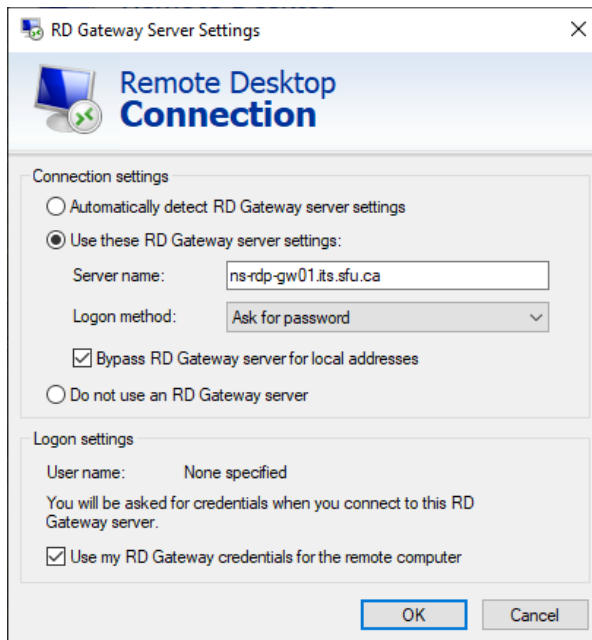
2. Enter the name of your office computer along with the port number **48555** separated by a colon (:), e.g. **blu11300-1.fhs.sfu.ca:48555**



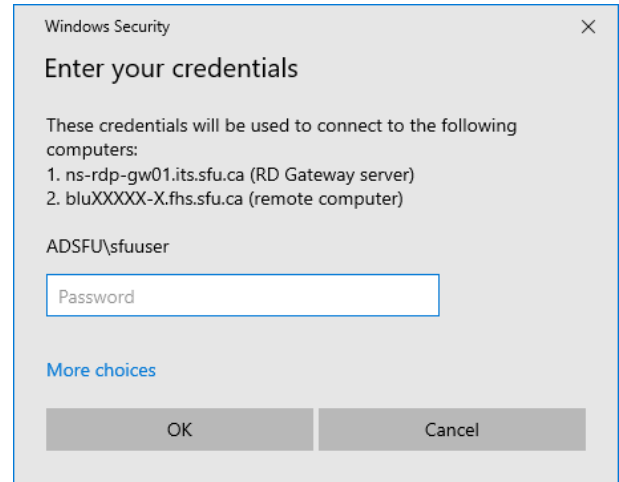
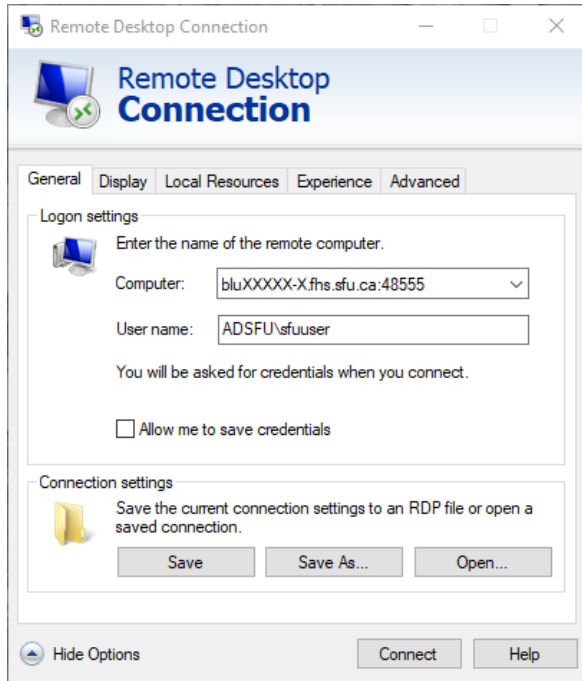
3. Click the arrow next to **Show Options**, then go to the **Advanced** tab. Click on **Settings...** in the *Connect from anywhere* panel



4. Set your remote desktop gateway setting as shown in the picture below. Press **OK** and go back to the **General** tab. The RD gateway **Server name** should be *ns-rdp-gw01.its.sfu.ca*



5. Enter your SFU username as ADSFU\



6. All done!