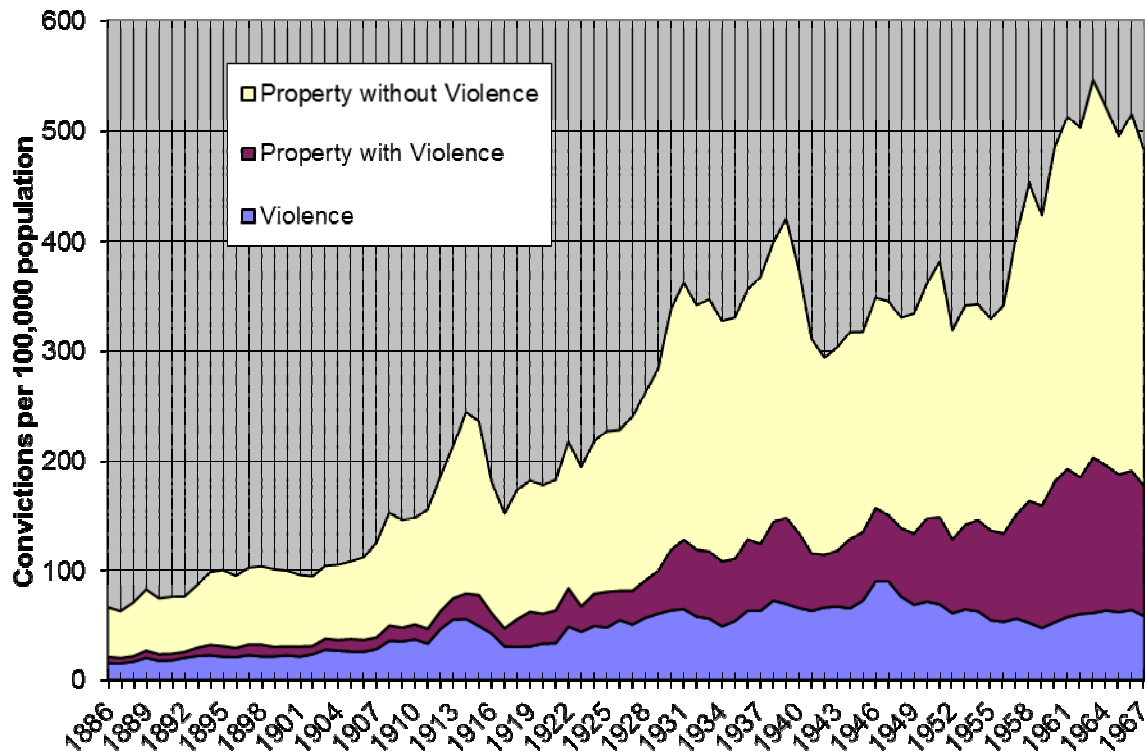


A Picture of Crime in Canada in 2010

The long View looks at Convictions from 1886 through 1964

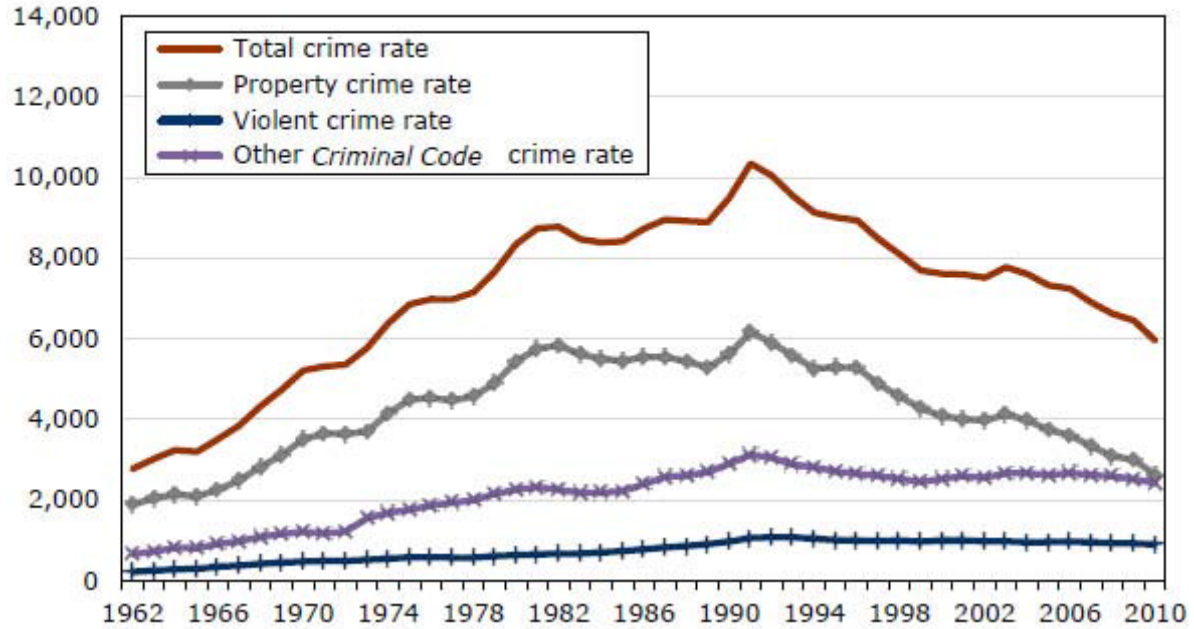
Long Term Canadian Crime Trends



But we can't use these data which are Convictions after 1968 or so. Instead we now use a measure of Crime Known to the police: (Data for the rest of the pictures is from Juristat 21 July 2011 various figures.)

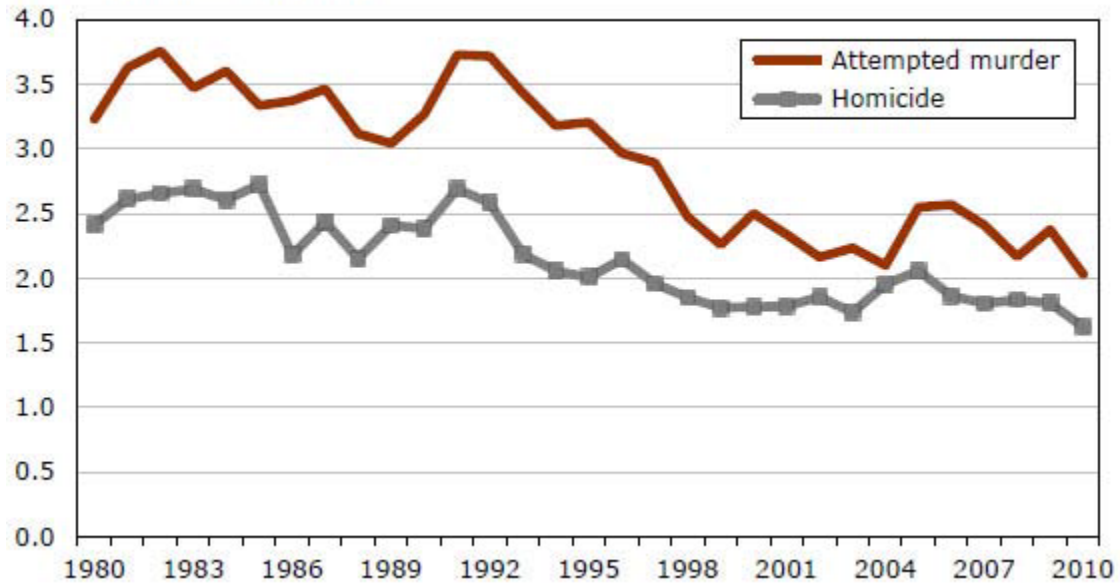
Total Crime

rate per 100,000 population



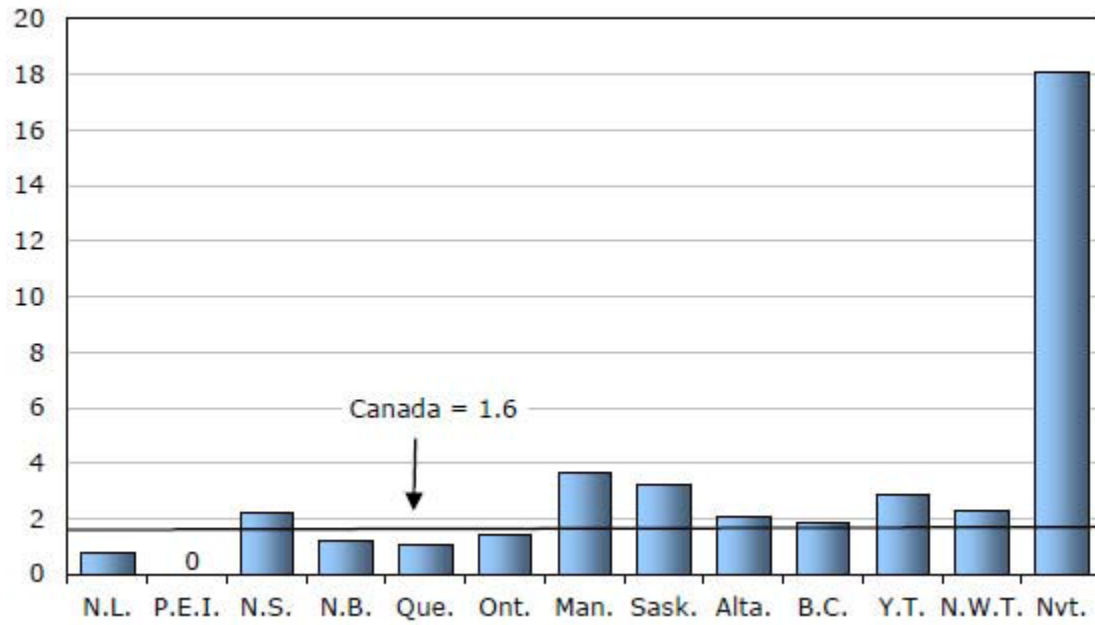
Homicide

rate per 100,000 population



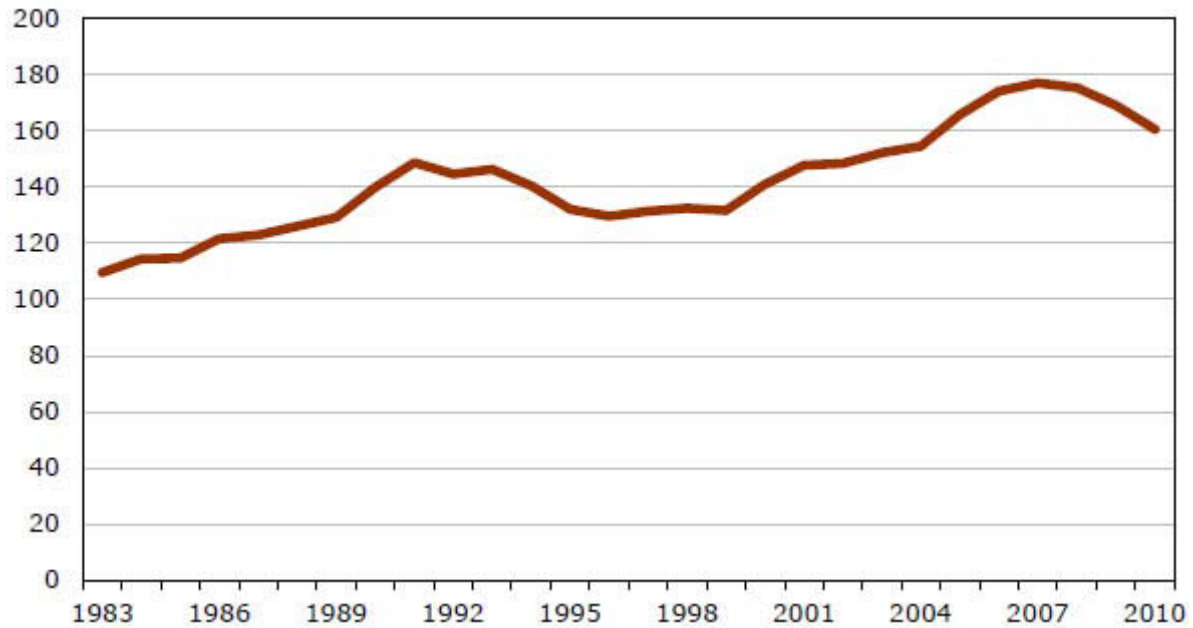
Homicide

rate per 100,000 population



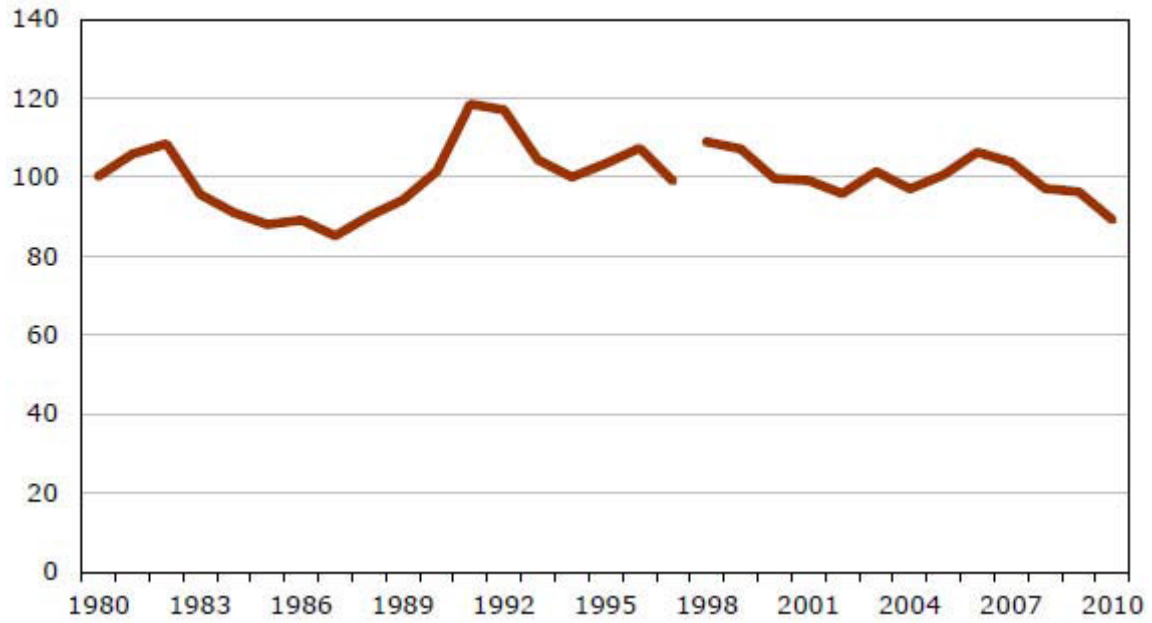
Serious Assault (2 and 3)

rate per 100,000 population



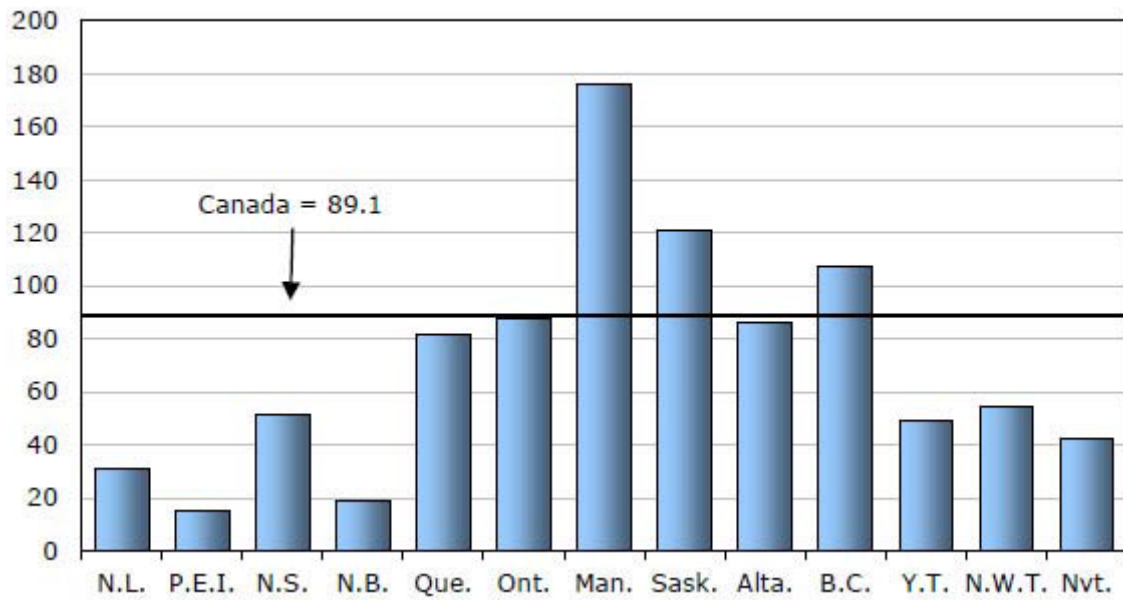
Robbery

rate per 100,000 population

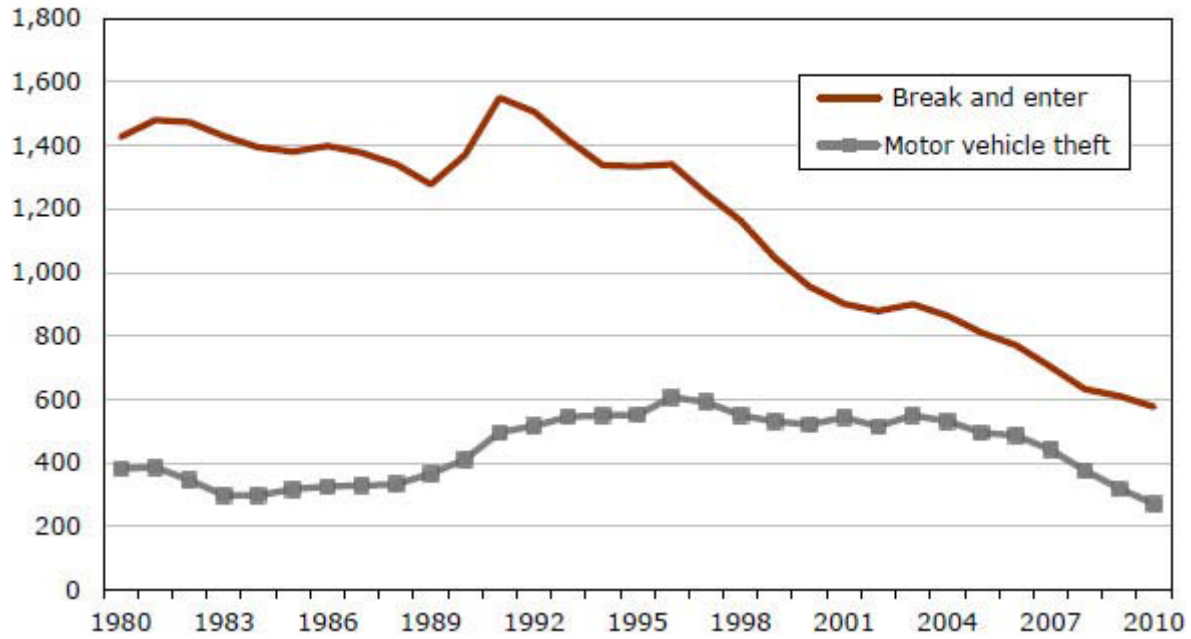


Robbery by Province

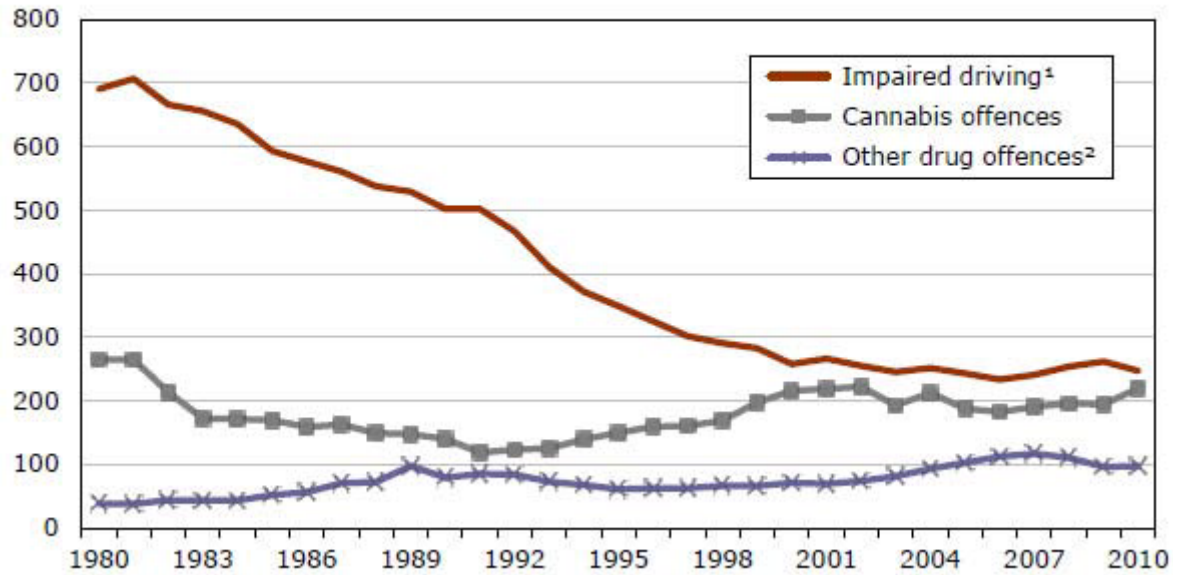
rate per 100,000 population



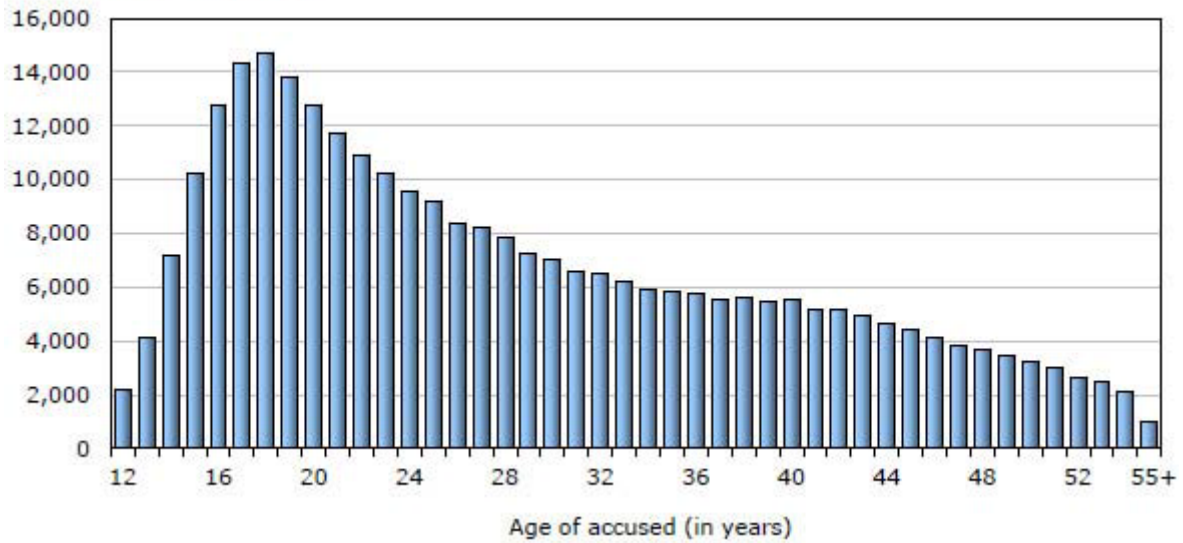
rate per 100,000 population



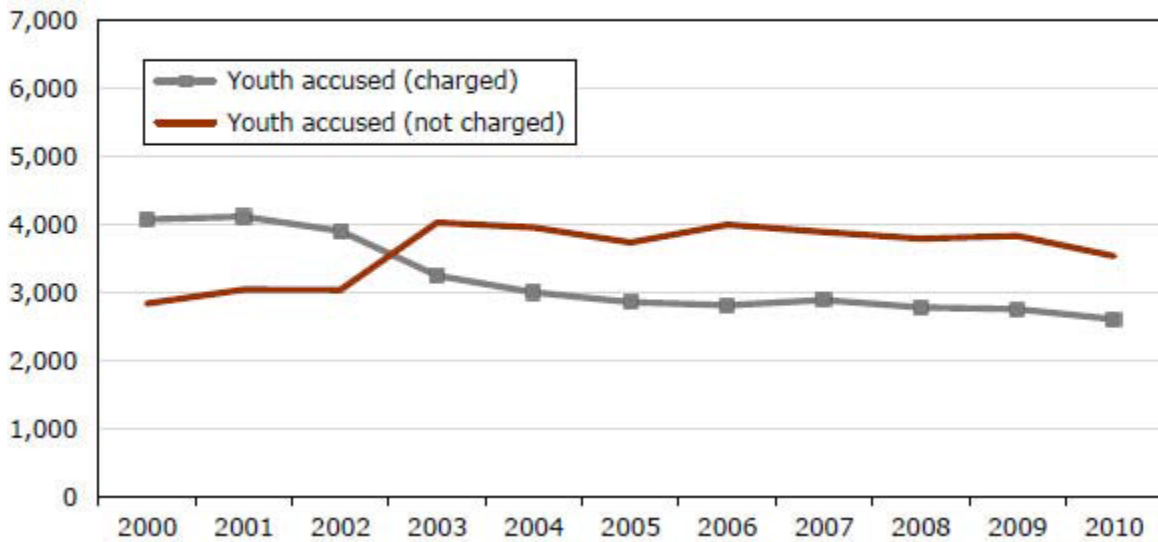
rate per 100,000 population

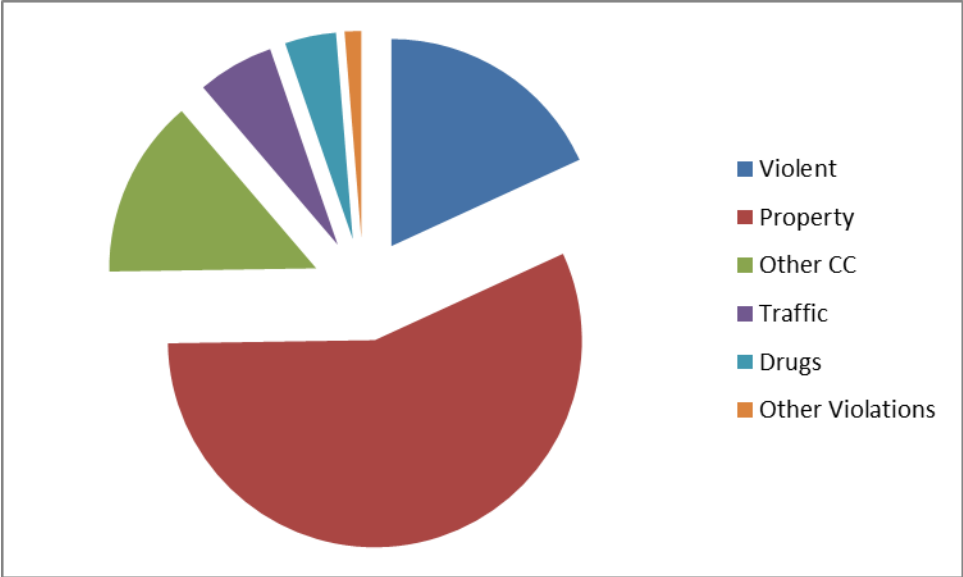


rate per 100,000 population



rate per 100,000 youth





Type of offence	Number 2009	rate	Number 2010	rate
Total crime (excluding traffic)	2,172,960	6,444	2,095,921	6,145
Violent crime				
Homicide	610	2	554	2
Other violations causing death	101	0	91	0
Attempted murder	801	2	693	2
Sexual assault—level 3—aggravated	119	0	188	1
Sexual assault—level 2—weapon or bodily harm	352	1	388	1
Sexual assault—level 1	20,450	61	21,604	63
Sexual violations against children ²	2,693	8	3,648	11
Assault—level 3—aggravated	3,619	11	3,410	10
Assault—level 2—weapon or bodily harm	53,383	158	51,340	151
Assault—level 1	180,564	535	173,843	510
Assault police officer ³	11,837	35	17,377	51
Other assaults	3,427	10	3,257	10
Firearms—use of, discharge, pointing	1,736	5	1,952	6
Robbery	32,463	96	30,405	89
Forcible confinement or kidnapping	4,791	14	4,308	13
Abduction	435	1	446	1
Extortion	1,718	5	1,548	5
Criminal harassment	19,860	59	21,108	62
Uttering threats	78,652	233	75,927	223
Threatening or harassing phone calls	23,186	69	21,436	63
Other violent <i>Criminal Code</i> violations	3,736	11	3,793	11
Total	444,533	1,318	437,316	1,282

Type of offence	number	rate	number	rate
Property crime				
Breaking and entering	206,069	611	196,881	577
Possess stolen property	30,712	91	29,823	87
Theft of motor vehicle	107,992	320	92,683	272
Theft over \$5,000 (non-motor vehicle)	15,795	47	15,790	46
Theft under \$5,000 (non-motor vehicle)	559,155	1,658	536,151	1,572
Fraud	90,731	269	88,491	259
Mischief	362,326	1,075	339,831	996
Arson	13,404	40	12,241	36
Total	1,386,184	4,111	1,311,891	3,846

Other Criminal Code offences

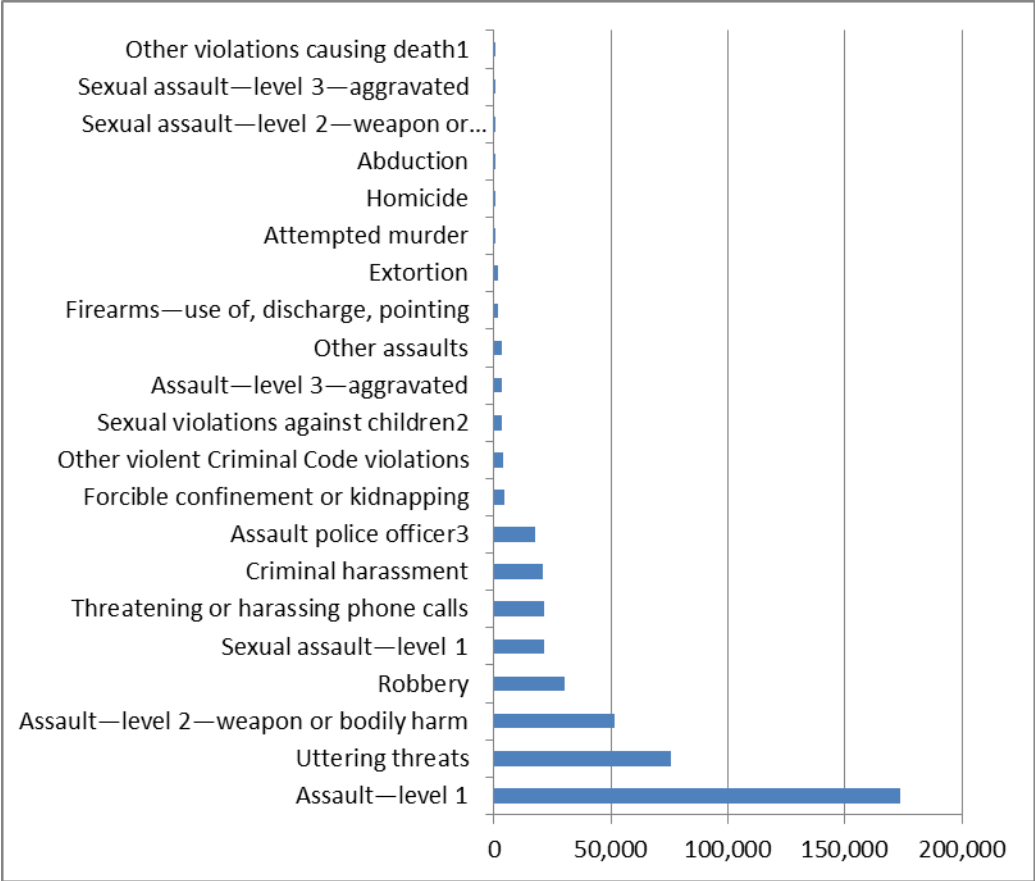
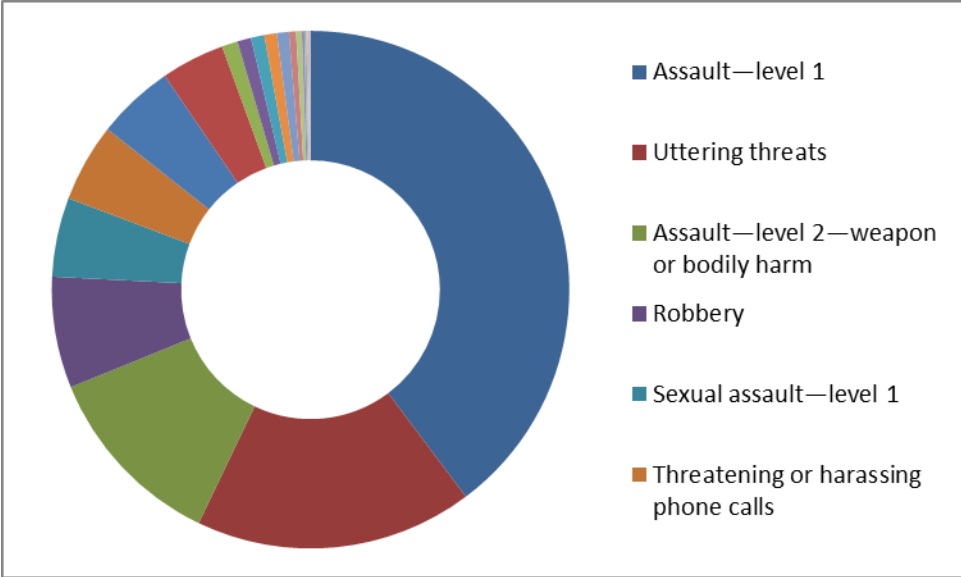
Counterfeiting	818	2	820	2
Weapons violations	14,987	44	14,861	44
Child pornography ⁴	1,587	5	2,190	6
Prostitution	3,534	10	3,043	9

Disturb the peace	117,644	349	117,903	346
Administration of justice violations	171,848	510	176,560	518
Other violations	31,825	94	31,337	92
Total	342,243	1,015	346,714	1,016

Criminal Code traffic violations

Impaired driving⁵	88,303	262	84,397	247
Other <i>Criminal Code</i> traffic violations	57,839	172	55,604	163
Total	146,142	433	140,001	410

Type of offence	Number	Rate	Number	rate
Drug offences				
Possession—cannabis	49,151	146	56,870	167
Possession—cocaine	7,614	23	7,256	21
Possession—other drugs	8,224	24	9,462	28
Trafficking, production or distribution—cannabis	16,404	49	18,256	54
Trafficking, production or distribution—cocaine	10,027	30	9,729	29
Trafficking, production or distribution—other drugs	6,543	19	6,956	20
Total	97,963	291	108,529	318
Other federal statute violations				
<i>Youth Criminal Justice Act</i>	12,461	37	13,036	38
Other federal statutes	19,279	57	19,684	58
Total	31,740	94	32,720	96
Total—all violations	2,448,805	7,262	2,377,171	6,969



Accused Youth

	N	rate	Violent		Property		Other	
2000	171,148	6,914	48,130	1,944	96,760	3,909	26,258	1,061
2001	178,529	7,159	49,475	1,984	99,097	3,974	29,957	1,201
2002	175,537	6,945	47,960	1,898	98,021	3,878	29,556	1,169
2003	186,041	7,280	50,106	1,961	105,625	4,133	30,310	1,186
2004	179,670	6,959	49,695	1,925	99,601	3,858	30,374	1,176
2005	172,024	6,596	49,430	1,895	92,631	3,552	29,963	1,149
2006	178,839	6,812	51,452	1,960	94,835	3,612	32,552	1,240
2007	177,400	6,782	51,144	1,955	93,701	3,582	32,555	1,245
2008	169,747	6,577	49,130	1,903	88,878	3,443	31,739	1,230
2009	167,103	6,593	48,030	1,895	88,309	3,484	30,764	1,214
2010	152,700	6,147	45,653	1,838	78,366	3,155	28,681	1,155

