

1. Introduction

PROBLEM:

Discovery and analysis of communication patterns in large complex email datasets are difficult tasks

GOAL:

- To find out interpersonal social activities in email datasets such as:
 - Changes of activities and roles of email addresses in the network
 - Correspondence patterns between email users

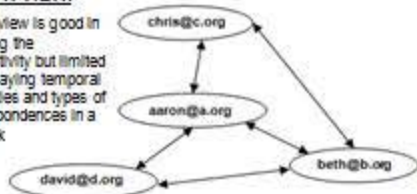
EMAILTIME [1]:

- Is a visual analysis of email correspondence patterns over the course of time
- Interactively portrays personal and interpersonal networks using the correspondence in the email dataset

2. Visualization Design

GRAPH VIEW:

Graph view is good in showing the connectivity but limited in displaying temporal properties and types of correspondences in a network



EMAILTIME PLOT VIEW:

- A message draws multiple circles in different colors
- Size of a Sent node represents the number of recipients



References

[1] Minoo Erfani Joorabchi, Ji-Dong Yim, Christopher D. Shaw, "EmailTime: Visualization of the Temporal Email," Grace Hopper Celebration 2010.

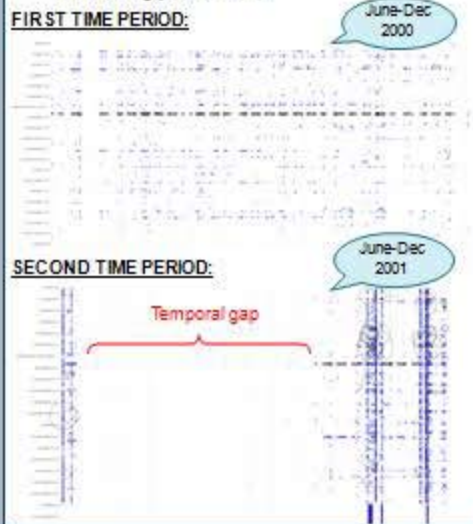
[2] W. W. Cohen, CALD, CMU, October 2004, from <http://www-2.cs.cmu.edu/~wcohen/>



3. EMAILTIME Capabilities

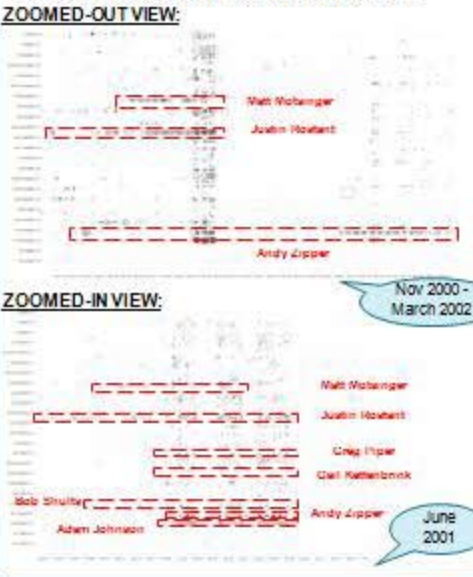
3.1. Time Comparison

- enables users to:
- Compare the activity of one or more email addresses in the particular time periods
 - Identify temporal gaps in email addresses' activities
 - if the analysts/users know some events they can easily relate those gaps to the events.



3.2. Top Frequent Correspondents

- enables users to:
 - Recognize top frequent correspondents
 - who have sent/received relatively a large amount of emails to/from the selected one
 - See types of correspondence (general or private messages) based on the size of sent messages



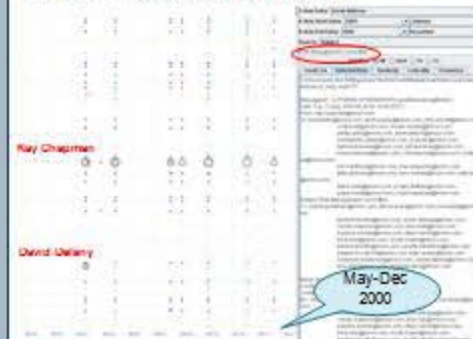
3.3. Email Comparison

- enables users to:
 - Compare the email addresses of one individual
 - Identify some changes such as switching from one email address to another one
 - See type of each email address (sender, receiver, both)
 - And other information such as start and end time, activity level, etc



4. Insights and Conclusion

- Using the mentioned capabilities, we learn to recognize changes of activities in the network, roles (secretary, leader, etc.) of email addresses and correspondence patterns between email users
- Scenario; finding out about an event and role of people in the event when searching for a particular subject such as "ENAMangement Committee"



4. Future Work

- To investigate the effect of executive (organizational) positions on email behaviour of organizational people

Contact Information

DVV Research Group
 School of Interactive Art and Technology
 Simon Fraser University
 Surrey, BC V3T 0A3 CANADA

Minoo Erfani Joorabchi, me18@sfu.ca
 Ji-Dong Yim, jyim@sfu.ca
 Christopher D. Shaw, cshaw@sfu.ca
<http://www.sfu.ca/~me18/>