

Remote Desktop Connection Client for Mac lets you connect from your Macintosh computer to a Windows-based computer and then work with applications in a Windows-based environment.

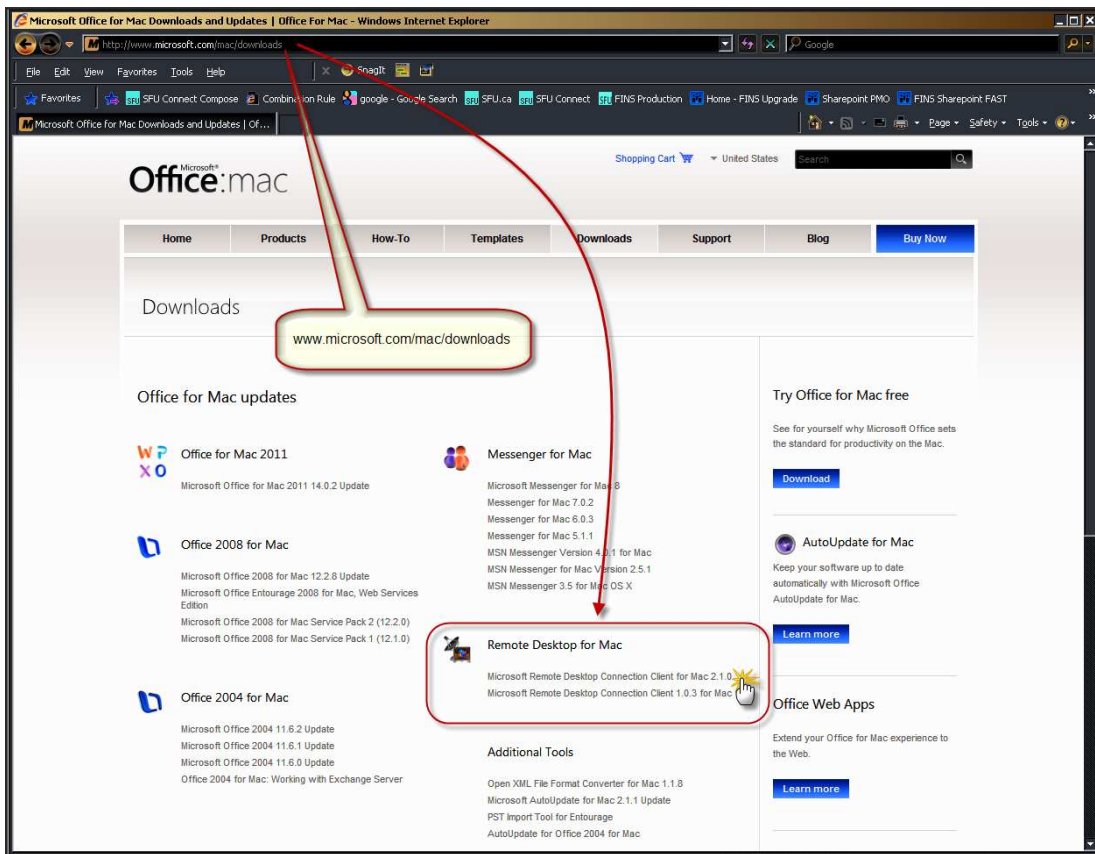
The Windows based environment available to SFU Mac users is known as “Talbot”.

Software Installation

A Remote Desktop application is available for download from the Microsoft website:

<http://www.microsoft.com/mac/downloads>

Assistance may be required from Tech Support to install the software, as most users do not have access to download software onto SFU managed desktops.



Under the category “Remote Desktop for Mac”, select the most current software version possible (preferably 2.1.0) depending upon the Mac Operating System (OS) in use.

- Microsoft Remote Desktop Connection Client for Mac 2.1.0 requires an OS of 10.5.8 or later
- Microsoft Remote Desktop Connection Client 1.0.3 for Mac requires an OS of 10.2.8 or later

To determine the Mac OS in use, on the **Apple** menu, click **About This Mac**

Print, and follow the installation instructions provided on the Microsoft web page.



Logging onto the RDC connection

After installing the software, to setup the connection to SFU's Talbot server, select the "Remote Desktop Connector" icon

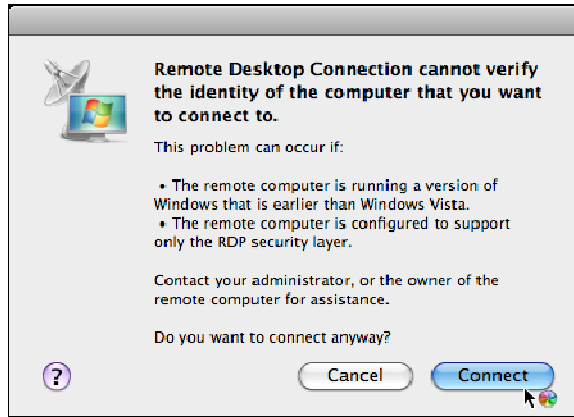


For Computer, enter: 'talbot.sfu.ca'

Select connect



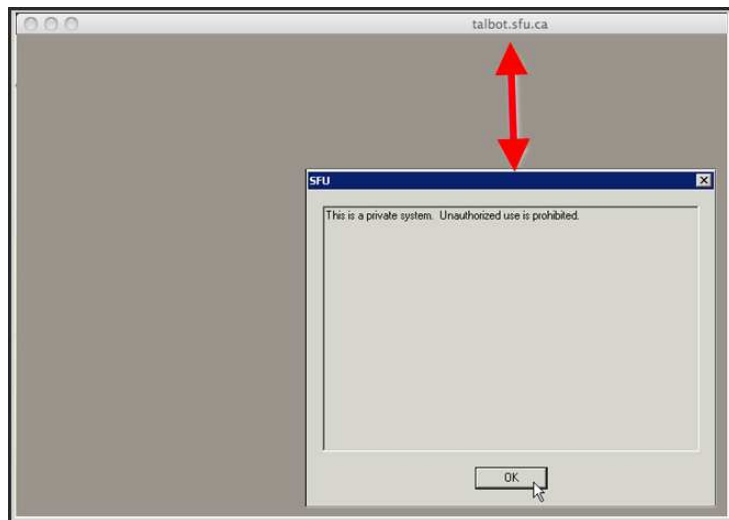
The following message may appear; if so select "Connect" to continue.



Upon reviewing the dialog box:

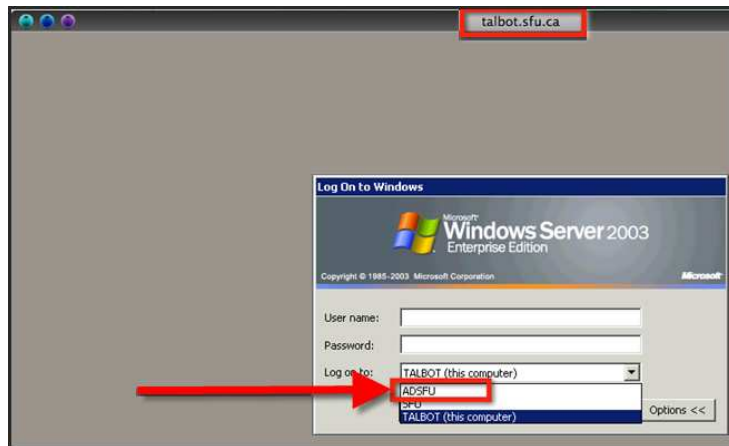
"This is a private system. Unauthorized use is prohibited"

Select "OK" to proceed.



Log on using your SFU e-mail User name and Password

Ensure Log on to: is set to "ADSFU"

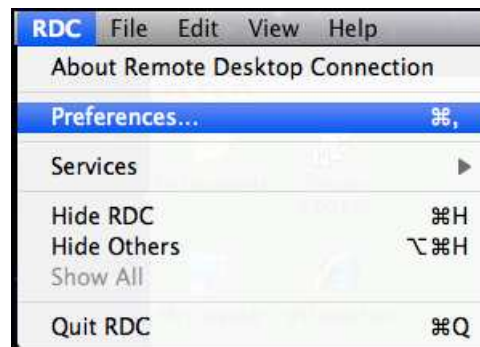


Settings and Preferences

To view the Windows environment full screen, under RDC, View, select "Full Screen".



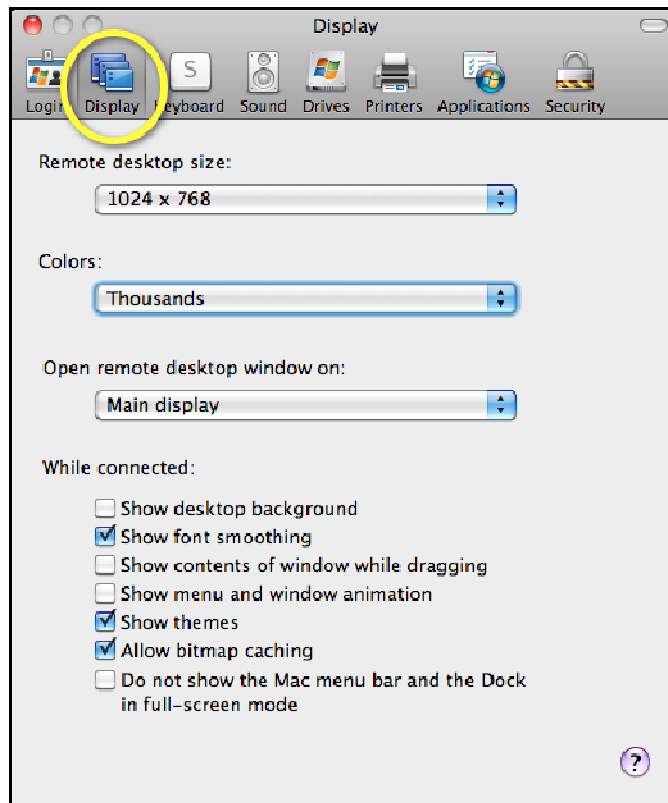
Additional settings may be found under RDC, Preferences.



Preference settings include:

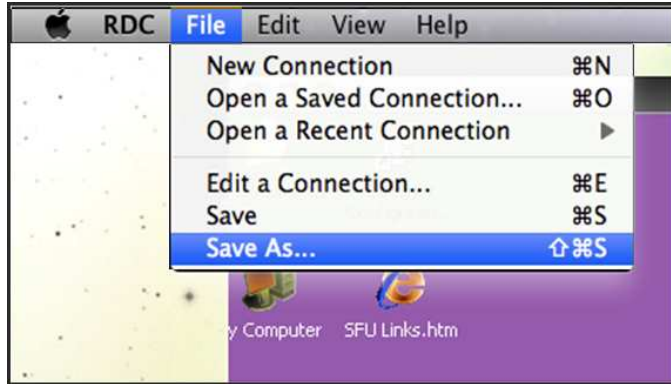
- Login
- Display
- Keyboard
- Sound
- Drives
- Printers
- Applications
- Security

Typically, the defaults loaded during the installation process are adequate; however you may wish to customize the display settings.

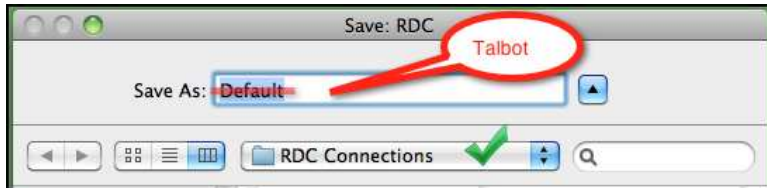


Saving the RDC connection

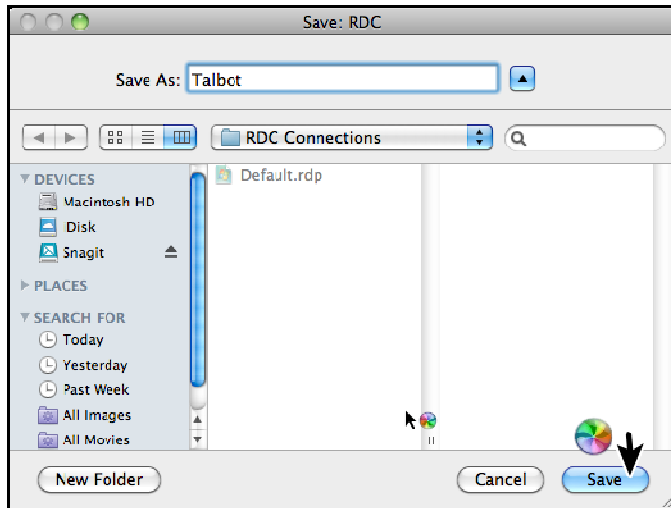
To save the connection settings, under RDC, File, select "Save As"





Change the Save As name from "Default" to "Talbot".



Save



Logging off the RDC connection

After exiting all Windows applications, to Log off of the Talbot server, select  then "Log off". Having the RDC View set to "Full Screen" may be helpful in locating  at the bottom left corner of the Windows desktop.