

# BC12 Graduates Transitioning to SFU - Top 5 SDs and Grades

Source: Student Transition Project (STP), April 2009

**Table 1: Distribution of 2007/08 BC 12 Graduates (from all college regions) Immediately Transitioning PSE by Institution**

			Fall 2008/2009		
psi_type2	psi_type	psi_full_name	Number	Percent	
University	RESEARCH UNIVERSITY	SIMON FRASER UNIVERSITY	2,748	14.4%	
		UNIVERSITY OF BRITISH COLUMBIA	3,339	17.5%	
		UNIVERSITY OF BRITISH COLUMBIA OKANAGAN	689	3.6%	
		UNIVERSITY OF NORTHERN BRITISH COLUMBIA	335	1.8%	
		UNIVERSITY OF VICTORIA	1,787	9.3%	
	RESEARCH UNIVERSITY Total			8,898	46.5%
	SPECIAL PURPOSE UNIV	THOMPSON RIVERS UNIVERSITY	763	4.0%	
		UNIVERSITY OF THE FRASER VALLEY	1,075	5.6%	
		VANCOUVER ISLAND UNIVERSITY	664	3.5%	
		KWANTLEN POLYTECHNIC UNIVERSITY	1,529	8.0%	
		CAPILANO UNIVERSITY	812	4.2%	
		EMILY CARR UNIVERSITY OF ART + DESIGN	124	0.6%	
	SPECIAL PURPOSE UNIV Total			4,967	26.0%
Non-University	COMMUNITY COLLEGE	CAMOSUN COLLEGE	620	3.2%	
		COLLEGE OF NEW CALEDONIA	296	1.5%	
		COLLEGE OF THE ROCKIES	131	0.7%	
		DOUGLAS COLLEGE	1,000	5.2%	
		LANGARA COLLEGE	963	5.0%	
		NORTH ISLAND COLLEGE	229	1.2%	
		NORTHERN LIGHTS COLLEGE	88	0.5%	
		NORTHWEST COMMUNITY COLLEGE	153	0.8%	
		OKANAGAN COLLEGE	628	3.3%	
		SELKIRK COLLEGE	256	1.3%	
	VANCOUVER COMMUNITY COLLEGE	227	1.2%		
	COMMUNITY COLLEGE Total			4,591	24.0%
	INSTITUTE	BRITISH COLUMBIA INSTITUTE OF TECHNOLOGY	640	3.3%	
JUSTICE INSTITUTE		4	0.0%		
NICOLA VALLEY INSTITUTE OF TECHNOLOGY		17	0.1%		
INSTITUTE Total			661	3.5%	
Grand Total			19,117	100.0%	

**Table 2: Distribution of the 2,748 BC 12 Graduates who Came to SFU by College Region**

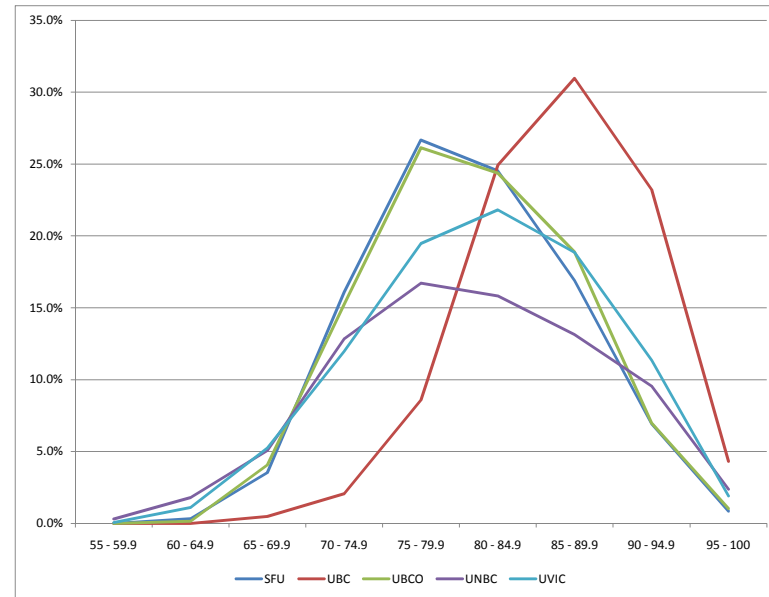
College Region	Fall 2008/2009	
	Number	Percent
Kwantlen	970	35.3%
Douglas	929	33.8%
Vancouver/Langara	547	19.9%
Capilano	169	6.1%
Fraser Valley	37	1.3%
Camosun	24	0.9%
Okanagan	19	0.7%
Malaspina	15	0.5%
North Island	13	0.5%
Thompson Rivers	9	0.3%
New Caledonia	7	0.3%
Selkirk	4	0.1%
Northern Lights	2	0.1%
Rockies	2	0.1%
Northwest	1	0.0%
Grand Total	2,748	100.0%

**Table 3: Distribution of the 2,748 BC12 Graduates Who Came to SFU by School District (Top 10)**

School District	Fall 2008/2009			
	Number	Percent	Percent of SD Transitioning to SFU	Percent of SD Transitioning to UBC
Surrey	508	18.5%	24.0%	15.1%
Vancouver	480	17.5%	20.6%	36.7%
Coquitlam	375	13.6%	29.6%	18.6%
Burnaby	358	13.0%	32.2%	29.0%
Richmond	229	8.3%	18.6%	33.1%
North Vancouver	85	3.1%	12.7%	20.7%
Langley	80	2.9%	16.0%	13.2%
Delta	75	2.7%	13.3%	17.7%
Maple Ridge-Pitt Mead	67	2.4%	18.7%	9.5%
New Westminster	47	1.7%	22.1%	44.1%
CATHOLIC INDEPENDENT	86	3.1%	17.4%	12.8%
Other	358	13.0%	1.9%	3.9%
Grand Total	2,748	100.0%	--	--

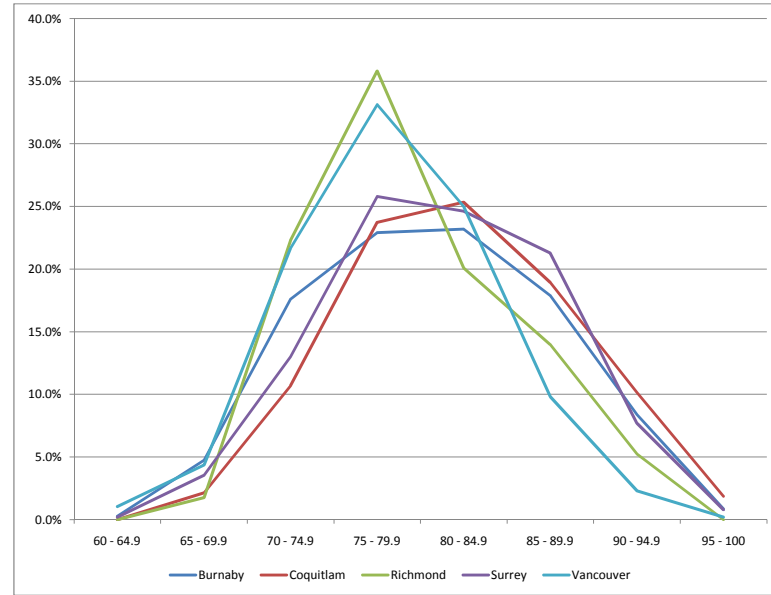
Table 4: GPA Distribution of BC12 Graduates Immediately Transitioning to Research Universities

	acad_gpa_grp	SFU	UBC	UBCO	UNBC	UVIC	Research Univ
(1) Student Count	None	116	182	22	75	146	541
	55 - 59.9				1	1	2
	60 - 64.9	9		1	6	20	36
	65 - 69.9	97	16	28	17	94	252
	70 - 74.9	442	69	105	43	214	873
	75 - 79.9	733	287	180	56	348	1,604
	80 - 84.9	674	832	168	53	390	2,117
	85 - 89.9	464	1,034	130	44	337	2,009
	90 - 94.9	190	775	48	32	203	1,248
	95 - 100	23	144	7	8	34	216
(2) % of Column	None	4.2%	5.5%	3.2%	22.4%	8.2%	6.1%
	55 - 59.9	0.0%	0.0%	0.0%	0.3%	0.1%	0.0%
	60 - 64.9	0.3%	0.0%	0.1%	1.8%	1.1%	0.4%
	65 - 69.9	3.5%	0.5%	4.1%	5.1%	5.3%	2.8%
	70 - 74.9	16.1%	2.1%	15.2%	12.8%	12.0%	9.8%
	75 - 79.9	26.7%	8.6%	26.1%	16.7%	19.5%	18.0%
	80 - 84.9	24.5%	24.9%	24.4%	15.8%	21.8%	23.8%
	85 - 89.9	16.9%	31.0%	18.9%	13.1%	18.9%	22.6%
	90 - 94.9	6.9%	23.2%	7.0%	9.6%	11.4%	14.0%
	95 - 100	0.8%	4.3%	1.0%	2.4%	1.9%	2.4%
(3) % of Row	None	21.4%	33.6%	4.1%	13.9%	27.0%	100.0%
	55 - 59.9	0.0%	0.0%	0.0%	50.0%	50.0%	100.0%
	60 - 64.9	25.0%	0.0%	2.8%	16.7%	55.6%	100.0%
	65 - 69.9	38.5%	6.3%	11.1%	6.7%	37.3%	100.0%
	70 - 74.9	50.6%	7.9%	12.0%	4.9%	24.5%	100.0%
	75 - 79.9	45.7%	17.9%	11.2%	3.5%	21.7%	100.0%
	80 - 84.9	31.8%	39.3%	7.9%	2.5%	18.4%	100.0%
	85 - 89.9	23.1%	51.5%	6.5%	2.2%	16.8%	100.0%
	90 - 94.9	15.2%	62.1%	3.8%	2.6%	16.3%	100.0%
	95 - 100	10.6%	66.7%	3.2%	3.7%	15.7%	100.0%



**Table 5: GPA Distribution of BC12 Immediately Transitioning to SFU From Top Five School Districts**

	acad_gpa_grp	Burnaby	Coquitlam	Richmond	Surrey	Vancouver
(1) Student Count	None	15	27	2	16	12
	55 - 59.9					
	60 - 64.9	1			1	5
	65 - 69.9	17	8	4	18	21
	70 - 74.9	63	40	51	66	104
	75 - 79.9	82	89	82	131	159
	80 - 84.9	83	95	46	125	120
	85 - 89.9	64	71	32	108	47
	90 - 94.9	30	38	12	39	11
	95 - 100	3	7		4	1
(2) % of Column	None	4.2%	7.2%	0.9%	3.1%	2.5%
	55 - 59.9					
	60 - 64.9	0.3%	0.0%	0.0%	0.2%	1.0%
	65 - 69.9	4.7%	2.1%	1.7%	3.5%	4.4%
	70 - 74.9	17.6%	10.7%	22.3%	13.0%	21.7%
	75 - 79.9	22.9%	23.7%	35.8%	25.8%	33.1%
	80 - 84.9	23.2%	25.3%	20.1%	24.6%	25.0%
	85 - 89.9	17.9%	18.9%	14.0%	21.3%	9.8%
	90 - 94.9	8.4%	10.1%	5.2%	7.7%	2.3%
	95 - 100	0.8%	1.9%	0.0%	0.8%	0.2%
(3) % of Row	None	20.8%	37.5%	2.8%	22.2%	16.7%
	55 - 59.9					
	60 - 64.9	14.3%	0.0%	0.0%	14.3%	71.4%
	65 - 69.9	25.0%	11.8%	5.9%	26.5%	30.9%
	70 - 74.9	19.4%	12.3%	15.7%	20.4%	32.1%
	75 - 79.9	15.1%	16.4%	15.1%	24.1%	29.3%
	80 - 84.9	17.7%	20.3%	9.8%	26.7%	25.6%
	85 - 89.9	19.9%	22.0%	9.9%	33.5%	14.6%
	90 - 94.9	23.1%	29.2%	9.2%	30.0%	8.5%
	95 - 100	20.0%	46.7%	0.0%	26.7%	6.7%



**Table 5: GPA Distribution of BC12 Immediately Transitioning to UBC From SFU's Top Five School Districts [also UBC's Top 5]**

	acad_gpa_grp	Burnaby	Coquitlam	Richmond	Surrey	Vancouver
(1) Student Count	None	3	36	1	14	67
	55 - 59.9					
	60 - 64.9					
	65 - 69.9	2	1		5	1
	70 - 74.9	14	1		10	3
	75 - 79.9	35	10		43	11
	80 - 84.9	63	45		115	66
	85 - 89.9	112	70		131	109
	90 - 94.9	80	57		91	94
	95 - 100	14	15		11	22
(2) % of Column	None	0.9%	15.3%	0.2%	4.4%	7.8%
	55 - 59.9					
	60 - 64.9					
	65 - 69.9	0.6%	0.4%	1.2%	0.0%	0.1%
	70 - 74.9	4.3%	0.4%	2.5%	0.9%	1.3%
	75 - 79.9	10.8%	4.3%	10.6%	3.4%	9.7%
	80 - 84.9	19.5%	19.1%	28.3%	20.7%	29.3%
	85 - 89.9	34.7%	29.8%	32.2%	34.2%	29.4%
	90 - 94.9	24.8%	24.3%	22.4%	29.5%	20.0%
	95 - 100	4.3%	6.4%	2.7%	6.9%	2.3%
(3) % of Row	None	2.5%	29.8%	0.8%	11.6%	55.4%
	55 - 59.9					
	60 - 64.9					
	65 - 69.9	22.2%	11.1%	55.6%	0.0%	11.1%
	70 - 74.9	35.9%	2.6%	25.6%	7.7%	28.2%
	75 - 79.9	19.2%	5.5%	23.6%	6.0%	45.6%
	80 - 84.9	11.7%	8.3%	21.3%	12.2%	46.4%
	85 - 89.9	16.6%	10.4%	19.5%	16.2%	37.3%
	90 - 94.9	16.2%	11.6%	18.5%	19.1%	34.7%
	95 - 100	17.1%	18.3%	13.4%	26.8%	24.4%

