



- The applications were submitted to each of the universities as follows: 44% to UBC, 29% to SFU, 22% to UVic and 4% to UNBC.
- Although a total of 11,394 applicants qualified for general admission to at least one university, admission offers only went out to 9,920 students. Therefore, **1,474 university-qualified B.C. secondary school students did not receive any offers of admission to BC universities in Fall 2004.** On the one hand, this figure may under-represent the shortfall of spaces for new students in BC universities because many qualified students do not apply to university since they have a priori knowledge that their grades are lower than the quota minimum entrance requirements. On the other hand, this figure may over-represent the shortfall of spaces in BC universities because not all of the 1,474 students would have registered had they been offered admission. It should be noted that 72% of qualified applicants registered at a B.C. university this fall. Therefore, it is expected that a similar proportion (1,061 of the 1,474 denied applicants) would have registered had they had received an offer of admission.
- The total number of students that accepted an admission offer and registered at a BC university was 7,191, distributed as follows: 46% at UBC, 31% at SFU, 19% at UVic and 4% at UNBC.
- UBC was most effective at converting applications into registrants: (1) UBC received 44% of the applications, but took in 46% of the registrants, and (2) UBC had a significantly higher rate of registrations per admission offer at 55%, compared to 43% for SFU, 39% for UVic, and 39% for UNBC.
- Many applicants to UBC appear to apply to SFU in the event they are not accepted by UBC. Of the 3,171 students who applied only to UBC and SFU this Fall, 2,338 received offers from UBC, of which 1,384 or 59% attended UBC. A greater number of students received offers from SFU (2,915) but only 40% registered.
- A total of 42,000 students graduated from B.C. public and independent secondary schools in 2003/04.<sup>2</sup> From this we can calculate that 30% of this year's B.C. grade 12 graduates applied for university admission, 27% qualified for general admission, 23% received at least one admission offer and 17% registered at a B.C. university.

---

<sup>2</sup> BC High School Graduates includes Public and Independent Schools. 42,000 students graduated from a BC Secondary School in the 12-month period ending September, 2004.

## Changes – Fall 2003 to Fall 2004:

Provided below are some comparative statistics between this year and last year on students who applied to UBC, SFU, UVic, and UNBC.

|                          | <u>Fall '03</u> | <u>Fall '04</u> | <u>% Chg</u> |
|--------------------------|-----------------|-----------------|--------------|
| Headcount Applicants     | 13,233          | 12,393          | -6.3%*       |
| Headcount Qualified Apps | 12,113          | 11,394          | -5.9%        |
| Headcount Adm. Offers    | 10,007          | 9,920           | -0.9%        |
| Headcount Denied Adm.    | 2,106           | 1,474           | -30.0%       |
| Headcount Registrants    | 7,436           | 7,191           | -3.3%        |
| Total Applications       | 21,779          | 20,536          | -5.7%        |
| Applications/Student     | 1.65            | 1.66            | +0.6%        |

\*Note that there was a 4.5% decrease in the number of BC High School graduates in 2004 as compared with 2003 (42,000 versus 43,985 respectively)

## Trends:

### Application Trends Relative to the Number of B.C. Grade 12 Graduates:

Chart C shows the trends in applications, admissions and registrations by B.C. grade 12 high school graduates to the four universities over the nine-year period, from 1995 to 2004.

- The number of B.C. grade 12 high school graduates has increased by 33% from 31,660 in 1994/95 to 42,000 in 2003/04). At the same time, the number of secondary school applicants to universities has increased, the proportion of admission offers have remained the same (after several years of declining rates) but registrations have declined.
  - In Fall 1995, 10,683 secondary school applicants received 8,514 admission offers (80% of applicants) and 6,415 students ultimately registered for courses (60% of applicants.)
  - In Fall 2004, 12,393 complete applicants received 9,920 admission offers (80% of complete applicants) and 7,191 students ultimately registered (58% of complete applicants.)
- Access to BC universities for BC grade 12 graduates continues to be a problem. Although the proportion of qualified grade 12 graduates applying to BC universities has remained relatively constant at approximately 28% over the past nine years, the proportion of secondary school graduates who receive admission offer(s) has declined from 27% to 24% and the proportion of secondary school graduates that registered has declined from 20% to 17%.

### Qualified Turnaways:

Chart D summarizes over the past eight years<sup>3</sup>, the number of qualified secondary school applicants to BC universities who were denied admission to a university. These students met the university calendar minimum requirements for admission eligibility, but due to the limited supply of spaces in the B.C. university system, these qualified applicants did not meet the “quota minimums” and were denied an offer of admission.

- In total over the past four years (the time frame for which we have consistent data for *complete* applications), 7,052 qualified applicants from B.C. secondary schools were denied admission to university.
- Not discouraged by the denial of admission to university, approximately, 3.3% (or 235) of the 7,052 qualified and denied applicants over the past four years had also applied in a previous year.
- *How many of the 2,106 denied applicants of Fall 2003, re-applied in 2004? Nearly 3.5% (or 73) of last year’s turnaways re-submitted a qualified application this year, of which 64 received an offer and 44 registered (9 were turned away again this year). Note that this analysis includes Fall semester applications only, so it is possible that some portion of the turnaways re-applied in a spring or summer semester.*
- *How many of the 1,830 applicants turned away in Fall 2002, re-applied in 2003 or 2004? Approximately 3% (or 57) turnaways from 2003 re-submitted a qualified application in 2003 or 2004, of which 38 received an offer, 32 registered and 19 were turned away again. The majority (93%) of re-applications were submitted in the year immediately following the admission denial (2003).*
- The number of applicants denied admission has decreased from 1,642 in the Fall of 2001 to 1,474 this Fall representing a 10% decrease in the volume of “turnaways” since Fall, 2001. Note that this decrease follows after two successive years of increases to the number of turnaways (1,830 and 2,106 for 2002 and 2003 respectively). As of Fall 2004, turnaways as a proportion of the number of qualified applicants, has decreased from 14.1% in 2001 to 12.9% in 2004.

Please contact me at [sljiwani@sfu.ca](mailto:sljiwani@sfu.ca) if you have any questions. Note that this document is available on the Office of Analytical Studies web site at Simon Fraser University: <http://www.sfu.ca/analytical-studies/AppsAnalysis/>

Enclosure

---

<sup>3</sup> Please note the break in the time series. Incomplete applications were included in the analysis prior to 2001, but excluded thereafter.

Distribution List:

Arlene Paton, Assistant Deputy Minister, Advanced Education  
Susan Burns, Manager, Universities, Advanced Education  
Frank Gelin, Executive Director, BC Council on Admissions and Transfer  
Devron Gaber, Associate Director, BC Council on Admissions and Transfer  
Walter Sudmant, Director, Planning and Institutional Research, UBC  
Walter Wattamaniuk, Director, Analytical Studies, SFU  
Joan Ross, Director, Institutional Analysis & Planning, UNBC  
Tony Eder, Director, Office of Institutional Analysis, UVic  
Ron Heath, Dean of Student Services and Registrar, SFU  
Brian Silzer, Associate VP and Registrar, UBC  
D.C. Thomas, Administrative Registrar, UVic  
John DeGrace, Registrar, UNBC  
Kim McGowan, Systems Development Manager, Student Records Systems, Uvic  
Michael Stevenson, President, SFU  
John Waterhouse, VP, Academic, SFU  
Bill Krane, Associate VP, Academic, SFU  
Nick Heath, Director of Admissions, SFU  
Blair Littler, VP, University President's Council of BC  
Christine Massey, Manager, Strategic Initiatives and Planning, Advanced Education  
Janice Nakamura, Director Accountability Branch, Advanced Education

**Analysis of Applications, Admissions and Registrations of  
BC Secondary School Applicants  
to BC Universities  
Fall, 2004**

*(Excluding Incomplete Applications)*

Prepared by:  
Suman Jiwani, Analyst  
Office of Analytical Studies  
Simon Fraser University

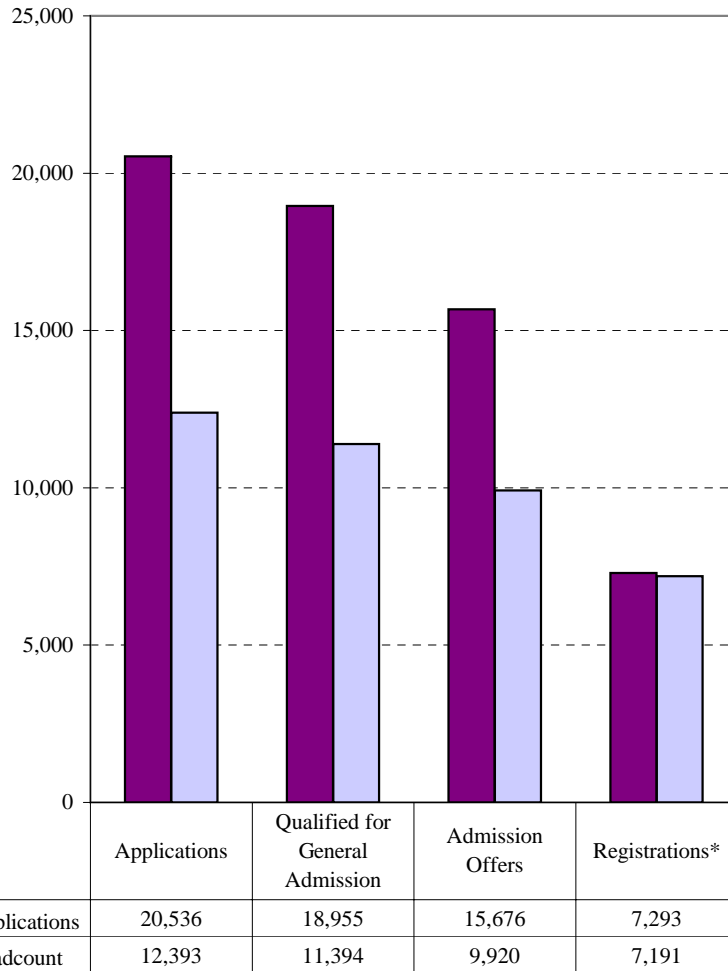
December 8, 2004

**Multiple Application/Admissions/Registration Statistics**  
**for B.C. Secondary Students Applying To B.C. Universities**

**Fall 2004**

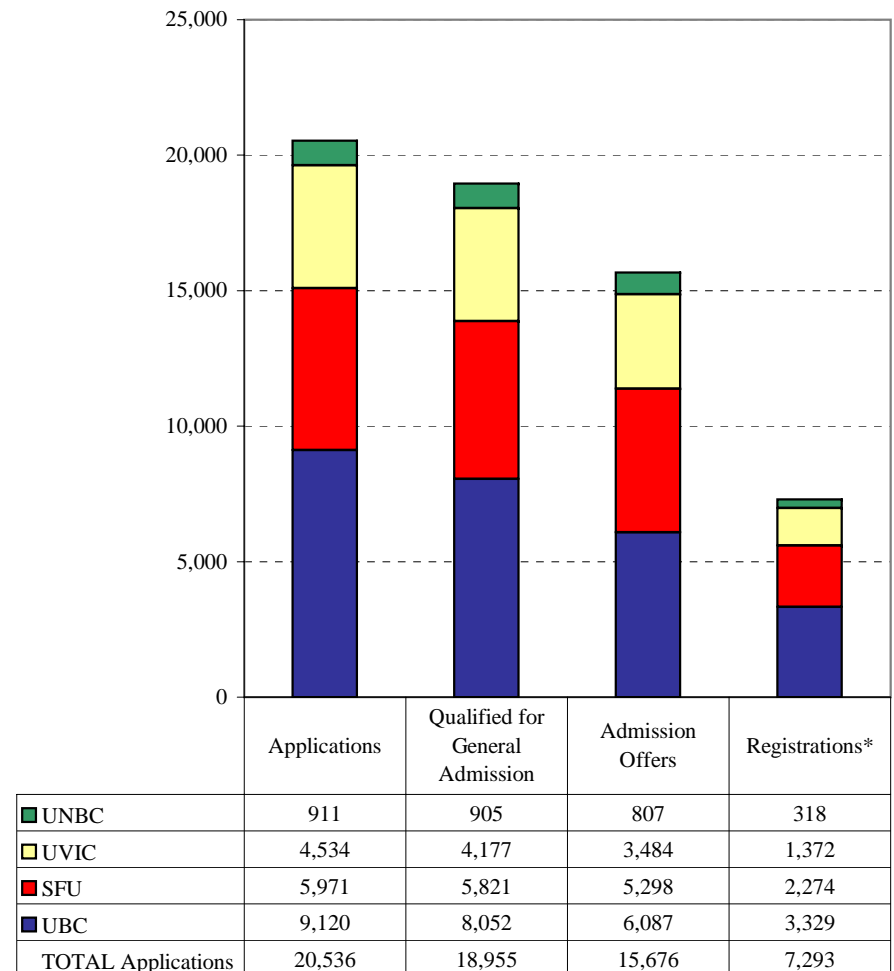
**CHART A**

**THE ADMISSIONS FUNNEL**  
**BC12 Applicants to BC Universities -- BC System Total**  
**(Fall 2004)**



**CHART B**

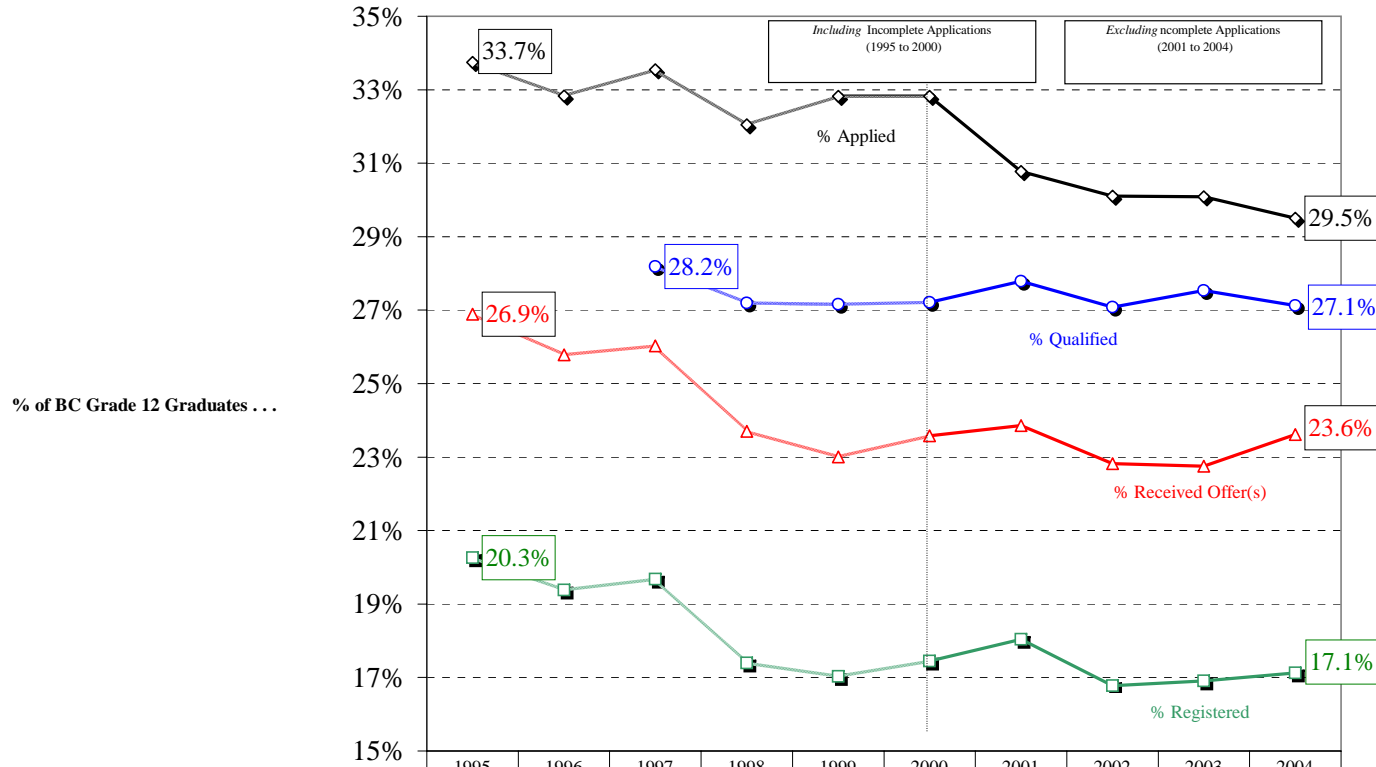
**THE ADMISSIONS FUNNEL**  
**BC12 Applications to BC Universities -- by University**  
**(Fall 2004)**



\*Note: At the time of this analysis, some students were registered at more than one institution.

CHART C

**BC12 APPLICATION TRENDS**  
**Unduplicated Headcount Applicants to BC Universities**  
**as a % of BC Grade 12 Graduates by Year (1995 to 2004)**



|   | 1995  | 1996  | 1997  | 1998  | 1999  | 2000  | 2001  | 2002  | 2003  | 2004  |
|---|-------|-------|-------|-------|-------|-------|-------|-------|-------|-------|
| ◆ . . . who applied to at least one BC University                         | 33.7% | 32.8% | 33.5% | 32.0% | 32.8% | 32.8% | 30.8% | 30.1% | 30.1% | 29.5% |
| ○ . . . who qualified for general admission to at least one BC University |       |       | 28.2% | 27.2% | 27.2% | 27.2% | 27.8% | 27.1% | 27.5% | 27.1% |
| △ . . . who received admission offer(s)                                   | 26.9% | 25.8% | 26.0% | 23.7% | 23.0% | 23.6% | 23.9% | 22.8% | 22.8% | 23.6% |
| ■ . . . who registered at a BC University                                 | 20.3% | 19.4% | 19.7% | 17.4% | 17.0% | 17.4% | 18.0% | 16.8% | 16.9% | 17.1% |

Notes: "Qualified for general admission" data was not collected prior to 1997.  
 BC High School Graduates includes Public and Independent Schools, where 2004 includes the 12-month period ending in September 2004.

|   | 1995   | 1996   | 1997   | 1998   | 1999   | 2000   | 2001   | 2002   | 2003   | 2004   |
|---|--------|--------|--------|--------|--------|--------|--------|--------|--------|--------|
| Total B.C. High School Graduates  | 31,660 | 33,535 | 34,730 | 37,465 | 39,012 | 40,941 | 41,843 | 42,983 | 43,985 | 42,000 |
| <b>Number of B.C. High School Graduates . . .</b>                       |        |        |        |        |        |        |        |        |        |        |
| . . . who applied to at least one BC Univ.                              | 10,683 | 11,011 | 11,650 | 12,006 | 12,806 | 13,439 | 12,878 | 12,939 | 13,233 | 12,393 |
| . . . who qualified for general admission to at least one BC University |        |        | 9,789  | 10,188 | 10,595 | 11,141 | 11,626 | 11,641 | 12,113 | 11,394 |
| . . . who received admission offer(s)                                   | 8,514  | 8,648  | 9,040  | 8,881  | 8,975  | 9,653  | 9,984  | 9,811  | 10,007 | 9,920  |
| . . . who registered at a BC University                                 | 6,415  | 6,501  | 6,835  | 6,517  | 6,643  | 7,144  | 7,547  | 7,213  | 7,436  | 7,191  |

From 2001 onward, incomplete applications are excluded.

Note that it appears as if there is a decrease in the number of applicants from high school, but this break in the time series is due to a change in the method of analysis. Starting in 2001, incomplete applications are excluded.

**Multiple Application/Admissions/Registration Statistics for B.C. Secondary Students**  
**Applying To B.C. Universities for Fall 2004**

Data extracted from:

UBC - Oct 2004

UVIC - Oct 2004

SFU - Oct 2004

UNBC - Oct 2004

**TABLE 1: MULTIPLE APPLICATION, ADMISSION, REGISTRATION STATISTICS (DUPLICATED HEADCOUNTS)**

| <b>Applications by University</b> | <b>Applications</b>  |               | <b>Qualified for<br/>General Admission</b>  |               | <b>Admission Offers</b>                      |               | <b>Registrations</b>                     |               |
|-----------------------------------|--|---------------|---|---------------|--|---------------|--|---------------|
|                                   | <u>No.</u>   | <u>%</u>      | <u>No.</u>                                  | <u>%</u>      | <u>No.</u>                                   | <u>%</u>      | <u>No.</u>                               | <u>%</u>      |
|                                   | UBC  | 9,120         | 44.4%                                       | 8,052         | 42.5%  | 6,087         | 38.8%                                    | 3,329         |
| SFU                               | 5,971  | 29.1%         | 5,821                                       | 30.7%         | 5,298  | 33.8%         | 2,274                                    | 31.2%         |
| UVIC                              | 4,534  | 22.1%         | 4,177                                       | 22.0%         | 3,484  | 22.2%         | 1,372                                    | 18.8%         |
| UNBC                              | 911  | 4.4%          | 905   | 4.8%          | 807  | 5.1%          | 318                                      | 4.4%          |
| <b>Total Applications</b>         | <b>20,536</b>  | <b>100.0%</b> | <b>18,955</b>                               | <b>100.0%</b> | <b>15,676</b>                                | <b>100.0%</b> | <b>7,293</b>                             | <b>100.0%</b> |
| <b>Unduplicated Headcount</b>     | <b>12,393</b>  |               | <b>11,394</b>                               |               | <b>9,920</b>                                 |               | <b>7,191</b>                             |               |
| <b>Applications Per Student</b>   | <b>1.66</b>  |               | <b>1.66</b>                                 |               | <b>1.58</b>                                  |               | <b>1.01</b>                              |               |
|                                   | <u>Qualified for<br/>General Admission per<br/>Application</u> |               | <u>Admission Offers per<br/>Application</u> |               | <u>Registrations per<br/>Admission Offer</u> |               | <u>Registrations per<br/>Application</u> |               |
| UBC                               | 88.3%  |               | 66.7%                                       |               | 54.7%  |               | 36.5%                                    |               |
| SFU                               | 97.5%  |               | 88.7%                                       |               | 42.9%  |               | 38.1%                                    |               |
| UVIC                              | 92.1%  |               | 76.8%                                       |               | 39.4%  |               | 30.3%                                    |               |
| UNBC                              | 99.3%  |               | 88.6%                                       |               | 39.4%  |               | 34.9%                                    |               |
| <b>Total (Duplicated)</b>         | <b>92.3%</b>   |               | <b>76.3%</b>                                |               | <b>46.5%</b>                                 |               | <b>35.5%</b>                             |               |
| <b>Total (Unduplicated)</b>       | <b>91.9%</b>   |               | <b>80.0%</b>                                |               | <b>72.5%</b>                                 |               | <b>58.0%</b>                             |               |

Notes:

Applications without PEN's were excluded from the above analysis (76 from SFU, 5 from UNBC).

Applications with duplicate PEN's at the same institution were excluded from the above analysis (9 from UBC, 6 from UNBC, 35 from SFU).

If incomplete applications had been included, then total applications = 21,976 and total unique headcount = 12,799.

Excludes incomplete applications.

**Multiple Application/Admissions/Registration Statistics for B.C. Secondary Students  
Applying to B.C. Universities, Fall 2004**

Data submitted by:

UBC - Oct 2004                      UVIC - Oct 2004  
SFU - Oct 2004                      UNBC - Oct 2004

**TABLE 2a: SIMON FRASER UNIVERSITY**

| Applications Made<br>by Students To: | Number of<br>Students<br>Applying | Number of Students Who Qualified for<br>General Admission To: |       |       |       | Resulted in Following Number<br>of Admission Offers Made By: |       |       |      | Resulted in Following Number<br>of Registrations At: |       |      |      | Resulted in Following<br>Show Rates At: |     |      |      |
|--------------------------------------|-----------------------------------|---|-------|-------|-------|--|-------|-------|------|--|-------|------|------|---|-----|------|------|
|                                      |                                   | UBC   | SFU   | UVIC  | UNBC  | UBC  | SFU   | UVIC  | UNBC | UBC  | SFU   | UVIC | UNBC | UBC                                     | SFU | UVIC | UNBC |
|                                      |                                   | SFU   | 1,153 | 0     | 1,102 | 0  | 0     | 0     | 932  | 0  | 0     | 0    | 608  | 0                                       | 0   | 0%   | 65%  |
| UBC SFU                              | 3,171                             | 2,976   | 3,107 | 0     | 0     | 2,338  | 2,915 | 0     | 0    | 1,384  | 1,164 | 0    | 0    | 59%                                     | 40% | 0%   | 0%   |
| SFU UVIC                             | 176                               | 0   | 173   | 162   | 0     | 0  | 140   | 120   | 0    | 0  | 56    | 56   | 0    | 0%                                      | 40% | 47%  | 0%   |
| SFU UNBC                             | 21                                | 0   | 21    | 0     | 21    | 0  | 12    | 0     | 16   | 0  | 5     | 0    | 4    | 0%                                      | 42% | 0%   | 25%  |
| UBC SFU UVIC                         | 1,247                             | 1,196   | 1,225 | 1,205 | 0     | 918  | 1,143 | 1,024 | 0    | 496  | 375   | 145  | 0    | 54%                                     | 33% | 14%  | 0%   |
| UBC SFU UNBC                         | 52                                | 42  | 46    | 0     | 51    | 21   | 36    | 0     | 45   | 7  | 15    | 0    | 14   | 33%                                     | 42% | 0%   | 31%  |
| SFU UVIC UNBC                        | 31                                | 0   | 28    | 27    | 31    | 0  | 23    | 15    | 28   | 0  | 11    | 3    | 7    | 0%                                      | 48% | 20%  | 25%  |
| UBC SFU UVIC UNBC                    | 120                               | 107   | 119   | 108   | 120   | 59   | 97    | 79    | 99   | 28   | 40    | 21   | 7    | 47%                                     | 41% | 27%  | 7%   |
|                                      | 5,971                             | 4,321   | 5,821 | 1,502 | 223   | 3,336  | 5,298 | 1,238 | 188  | 1,915  | 2,274 | 225  | 32   | 57%                                     | 43% | 18%  | 17%  |

**TABLE 2b: UNIVERSITY OF BRITISH COLUMBIA**

| Applications Made<br>by Students To: | Number of<br>Students<br>Applying | Number of Students Who Qualified for<br>General Admission to: |       |       |      | Resulted in Following Number<br>of Admission Offers Made By: |       |       |      | Resulted in Following Number<br>of Registrations At: |       |       |      | Resulted in Following<br>Show Rates At: |     |      |      |
|--------------------------------------|-----------------------------------|---|-------|-------|------|--|-------|-------|------|--|-------|-------|------|---|-----|------|------|
|                                      |                                   | UBC   | SFU   | UVIC  | UNBC | UBC  | SFU   | UVIC  | UNBC | UBC  | SFU   | UVIC  | UNBC | UBC                                     | SFU | UVIC | UNBC |
|                                      |                                   | UBC   | 2,947 | 2,305 | 0    | 0  | 0     | 1,683 | 0    | 0  | 0     | 1,033 | 0    | 0                                       | 0   | 61%  | 0%   |
| UBC SFU                              | 3,171                             | 2,976   | 3,107 | 0     | 0    | 2,338  | 2,915 | 0     | 0    | 1,384  | 1,164 | 0     | 0    | 59%                                     | 40% | 0%   | 0%   |
| UBC UVIC                             | 1,433                             | 1,306   | 0     | 1,349 | 0    | 1,006  | 0     | 1,189 | 0    | 360  | 0     | 457   | 0    | 36%                                     | 0%  | 38%  | 0%   |
| UBC UNBC                             | 78                                | 63  | 0     | 0     | 77   | 32   | 0     | 0     | 68   | 14   | 0     | 0     | 26   | 44%                                     | 0%  | 0%   | 38%  |
| UBC SFU UVIC                         | 1,247                             | 1,196   | 1,225 | 1,205 | 0    | 918  | 1,143 | 1,024 | 0    | 496  | 375   | 145   | 0    | 54%                                     | 33% | 14%  | 0%   |
| UBC SFU UNBC                         | 52                                | 42  | 46    | 0     | 51   | 21   | 36    | 0     | 45   | 7  | 15    | 0     | 14   | 33%                                     | 42% | 0%   | 31%  |
| UBC UVIC UNBC                        | 72                                | 57  | 0     | 59    | 72   | 30   | 0     | 40    | 64   | 7  | 0     | 15    | 17   | 23%                                     | 0%  | 38%  | 27%  |
| UBC SFU UVIC UNBC                    | 120                               | 107   | 119   | 108   | 120  | 59   | 97    | 79    | 99   | 28   | 40    | 21    | 7    | 47%                                     | 41% | 27%  | 7%   |
|                                      | 9,120                             | 8,052   | 4,497 | 2,721 | 320  | 6,087  | 4,191 | 2,332 | 276  | 3,329  | 1,594 | 638   | 64   | 55%                                     | 38% | 27%  | 23%  |

**Multiple Application/Admissions/Registration Statistics for B.C. Secondary Students  
Applying to B.C. Universities, Fall 2004**

Data submitted by:

UBC - Oct 2004                      UVIC - Oct 2004  
SFU - Oct 2004                      UNBC - Oct 2004

**TABLE 2c: UNIVERSITY OF VICTORIA**

| Applications Made<br>by Students To: | Number of<br>Students<br>Applying | Number of Students Who Qualified for<br>General Admission to: |       |       |      | Resulted in Following Number<br>of Admission Offers Made By: |       |       |      | Resulted in Following Number<br>of Registrations At: |     |       |      | Resulted in Following<br>Show Rates At: |     |      |      |
|--------------------------------------|-----------------------------------|---|-------|-------|------|--|-------|-------|------|--|-----|-------|------|---|-----|------|------|
|                                      |                                   | UBC   | SFU   | UVIC  | UNBC | UBC  | SFU   | UVIC  | UNBC | UBC  | SFU | UVIC  | UNBC | UBC                                     | SFU | UVIC | UNBC |
|                                      |                                   |   |       |       |      |  |       |       |      |  |     |       |      |   |     |      |      |
| UVIC                                 | 1,355                             | 0   | 0     | 1,179 | 0    | 0  | 961   | 0     | 0    | 0  | 646 | 0     | 0%   | 0%                                      | 67% | 0%   |      |
| UBC                                  | 1,433                             | 1,306   | 0     | 1,349 | 0    | 1,006  | 0     | 1,189 | 0    | 360  | 0   | 457   | 0    | 36%                                     | 0%  | 38%  | 0%   |
| SFU                                  | 176                               | 0   | 173   | 162   | 0    | 0  | 140   | 120   | 0    | 0  | 56  | 56    | 0    | 0%                                      | 40% | 47%  | 0%   |
| UVIC                                 | 100                               | 0   | 0     | 88    | 100  | 0  | 0     | 56    | 94   | 0  | 0   | 29    | 24   | 0%                                      | 0%  | 52%  | 26%  |
| UBC                                  | 1,247                             | 1,196   | 1,225 | 1,205 | 0    | 918  | 1,143 | 1,024 | 0    | 496  | 375 | 145   | 0    | 54%                                     | 33% | 14%  | 0%   |
| UBC                                  | 72                                | 57  | 0     | 59    | 72   | 30   | 0     | 40    | 64   | 7  | 0   | 15    | 17   | 23%                                     | 0%  | 38%  | 27%  |
| SFU                                  | 31                                | 0   | 28    | 27    | 31   | 0  | 23    | 15    | 28   | 0  | 11  | 3     | 7    | 0%                                      | 48% | 20%  | 25%  |
| UBC                                  | 120                               | 107   | 119   | 108   | 120  | 59   | 97    | 79    | 99   | 28   | 40  | 21    | 7    | 47%                                     | 41% | 27%  | 7%   |
|                                      | 4,534                             | 2,666   | 1,545 | 4,177 | 323  | 2,013  | 1,403 | 3,484 | 285  | 891  | 482 | 1,372 | 55   | 44%                                     | 34% | 39%  | 19%  |

**TABLE 2d: UNIVERSITY OF NORTHERN BRITISH COLUMBIA**

| Applications Made<br>by Students To: | Number of<br>Students<br>Applying | Number of Students Who Qualified for<br>General Admission to: |     |      |      | Resulted in Following Number<br>of Admission Offers Made By: |     |      |      | Resulted in Following Number<br>of Registrations At: |     |      |      | Resulted in Following<br>Show Rates At: |     |      |      |
|--------------------------------------|-----------------------------------|---|-----|------|------|--|-----|------|------|--|-----|------|------|---|-----|------|------|
|                                      |                                   | UBC   | SFU | UVIC | UNBC | UBC  | SFU | UVIC | UNBC | UBC  | SFU | UVIC | UNBC | UBC                                     | SFU | UVIC | UNBC |
|                                      |                                   |   |     |      |      |  |     |      |      |  |     |      |      |   |     |      |      |
| UNBC                                 | 437                               | 0   | 0   | 0    | 433  | 0  | 0   | 0    | 393  | 0  | 0   | 0    | 219  | 0%                                      | 0%  | 0%   | 56%  |
| UBC                                  | 78                                | 63  | 0   | 0    | 77   | 32   | 0   | 0    | 68   | 14   | 0   | 0    | 26   | 44%                                     | 0%  | 0%   | 38%  |
| SFU                                  | 21                                | 0   | 21  | 0    | 21   | 0  | 12  | 0    | 16   | 0  | 5   | 0    | 4    | 0%                                      | 42% | 0%   | 25%  |
| UVIC                                 | 100                               | 0   | 0   | 88   | 100  | 0  | 0   | 56   | 94   | 0  | 0   | 29   | 24   | 0%                                      | 0%  | 52%  | 26%  |
| UBC                                  | 52                                | 42  | 46  | 0    | 51   | 21   | 36  | 0    | 45   | 7  | 15  | 0    | 14   | 33%                                     | 42% | 0%   | 31%  |
| UBC                                  | 72                                | 57  | 0   | 59   | 72   | 30   | 0   | 40   | 64   | 7  | 0   | 15   | 17   | 23%                                     | 0%  | 38%  | 27%  |
| SFU                                  | 31                                | 0   | 28  | 27   | 31   | 0  | 23  | 15   | 28   | 0  | 11  | 3    | 7    | 0%                                      | 48% | 20%  | 25%  |
| UBC                                  | 120                               | 107   | 119 | 108  | 120  | 59   | 97  | 79   | 99   | 28   | 40  | 21   | 7    | 47%                                     | 41% | 27%  | 7%   |
|                                      | 911                               | 269   | 214 | 282  | 905  | 142  | 168 | 190  | 807  | 56   | 71  | 68   | 318  | 39%                                     | 42% | 36%  | 39%  |

**Multiple Application/Admissions/Registration Statistics for B.C. Secondary Students**  
**Applying To B.C. Universities for Fall 2004**

Data extracted from:

UBC - Oct 2004

UVIC - Oct 2004

SFU - Oct 2004

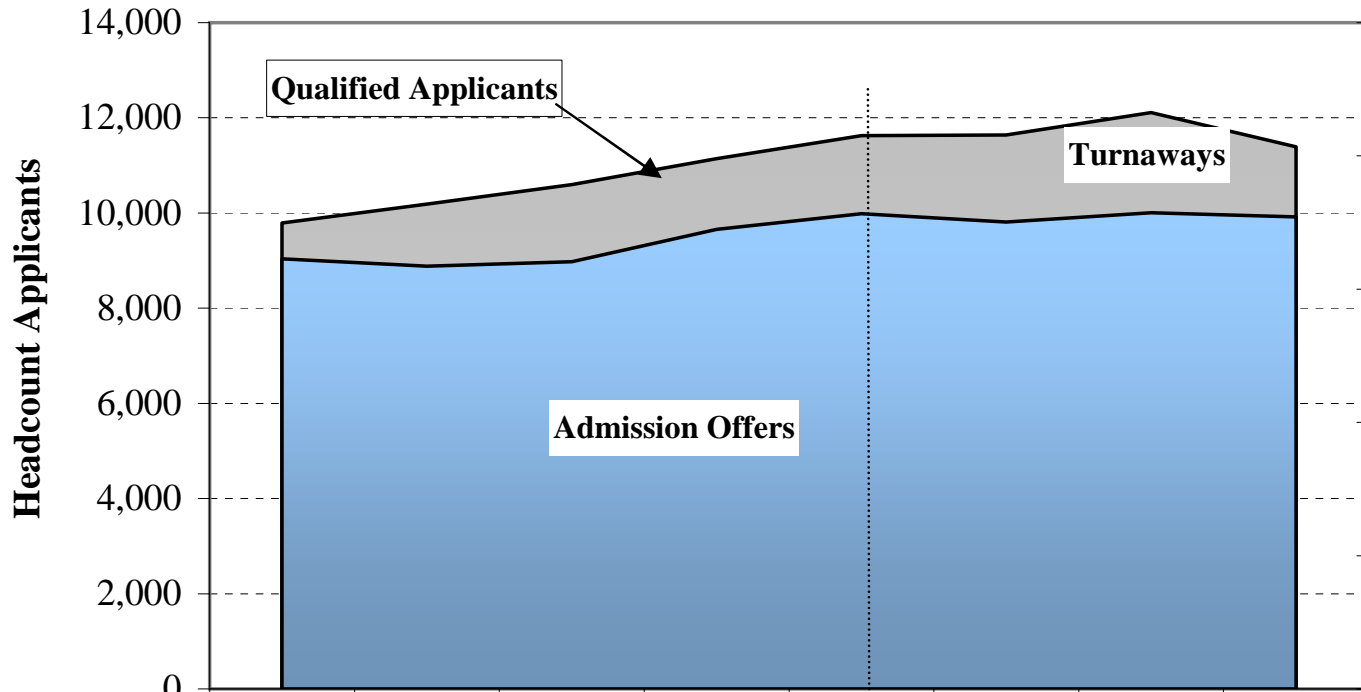
UNBC - Oct 2004

**TABLE 3: UNDUPLICATED HEADCOUNT STATISTICS**

| <b>Headcounts by<br/>University Combinations</b> | <u>Applications</u> |               | <u>Qualified for<br/>General Admission</u> |               | <u>Admission Offers</u> |               | <u>Registrations</u> |               |
|--|---------------------|---------------|--|---------------|-------------------------|---------------|----------------------|---------------|
|  | <u>No.</u>          | <u>%</u>      | <u>No.</u>                                 | <u>%</u>      | <u>No.</u>              | <u>%</u>      | <u>No.</u>           | <u>%</u>      |
| <b>ONE University</b>                            | <b>5,892</b>        | <b>47.5%</b>  | <b>5,347</b>                               | <b>46.9%</b>  | <b>5,201</b>            | <b>52.4%</b>  | <b>7,092</b>         | <b>98.6%</b>  |
| UBC  | 2,947               | 23.8%         | 2,340                                      | 20.5%         | 1,768                   | 17.8%         | 3,241                | 45.1%         |
| SFU  | 1,153               | 9.3%          | 1,288                                      | 11.3%         | 1,710                   | 17.2%         | 2,191                | 30.5%         |
| UVIC   | 1,355               | 10.9%         | 1,240                                      | 10.9%         | 1,197                   | 12.1%         | 1,343                | 18.7%         |
| UNBC   | 437                 | 3.5%          | 479  | 4.2%          | 526                     | 5.3%          | 317                  | 4.4%          |
| <b>TWO Universities</b>                          | <b>4,979</b>        | <b>40.2%</b>  | <b>4,639</b>                               | <b>40.7%</b>  | <b>3,732</b>            | <b>37.6%</b>  | <b>96</b>            | <b>1.3%</b>   |
| UBC/SFU  | 3,171               | 25.6%         | 2,966                                      | 26.0%         | 2,328                   | 23.5%         | 69                   | 1.0%          |
| UBC/UVIC   | 1,433               | 11.6%         | 1,302                                      | 11.4%         | 997                     | 10.1%         | 16                   | 0.2%          |
| UBC/UNBC   | 78                  | 0.6%          | 64   | 0.6%          | 35                      | 0.4%          | 0                    | 0.0%          |
| SFU/UVIC   | 176                 | 1.4%          | 178  | 1.6%          | 254                     | 2.6%          | 10                   | 0.1%          |
| SFU/UNBC   | 21                  | 0.2%          | 38   | 0.3%          | 48                      | 0.5%          | 1                    | 0.0%          |
| UVIC/UNBC  | 100                 | 0.8%          | 91   | 0.8%          | 70                      | 0.7%          | 0                    | 0.0%          |
| <b>THREE Universities</b>                        | <b>1,402</b>        | <b>11.3%</b>  | <b>1,302</b>                               | <b>11.4%</b>  | <b>937</b>              | <b>9.4%</b>   | <b>3</b>             | <b>0.0%</b>   |
| UBC/SFU/UVIC                                     | 1,247               | 10.1%         | 1,175                                      | 10.3%         | 859                     | 8.7%          | 3                    | 0.0%          |
| UBC/SFU/UNBC                                     | 52                  | 0.4%          | 42   | 0.4%          | 21                      | 0.2%          | 0                    | 0.0%          |
| UBC/UVIC/UNBC                                    | 72                  | 0.6%          | 57   | 0.5%          | 29                      | 0.3%          | 0                    | 0.0%          |
| SFU/UVIC/UNBC                                    | 31                  | 0.3%          | 28   | 0.2%          | 28                      | 0.3%          | 0                    | 0.0%          |
| <b>ALL FOUR Universities</b>                     | <b>120</b>          | <b>1.0%</b>   | <b>106</b>                                 | <b>0.9%</b>   | <b>50</b>               | <b>0.5%</b>   | <b>0</b>             | <b>0.0%</b>   |
| <b>Total Unique Headcount</b>                    | <b>12,393</b>       | <b>100.0%</b> | <b>11,394</b>                              | <b>100.0%</b> | <b>9,920</b>            | <b>100.0%</b> | <b>7,191</b>         | <b>100.0%</b> |

**CHART D**

**B.C. University Turnaways: 1997 to 2004**



|                      | 1997  | 1998   | 1999   | 2000   | 2001   | 2002   | 2003   | 2004   |
|----------------------|-------|--------|--------|--------|--------|--------|--------|--------|
| Qualified Applicants | 9,789 | 10,188 | 10,595 | 11,141 | 11,626 | 11,641 | 12,113 | 11,394 |
| Admission Offers     | 9,040 | 8,881  | 8,975  | 9,653  | 9,984  | 9,811  | 10,007 | 9,920  |
| Turnaways            | 749   | 1,307  | 1,620  | 1,488  | 1,642  | 1,830  | 2,106  | 1,474  |
| % Turnaways          | 8%    | 13%    | 15%    | 13%    | 14%    | 16%    | 17%    | 13%    |

% Turnaways = Turnaways as a % of Admission Qualified Applicants. Date includes incomplete applications (1997 to 2000).