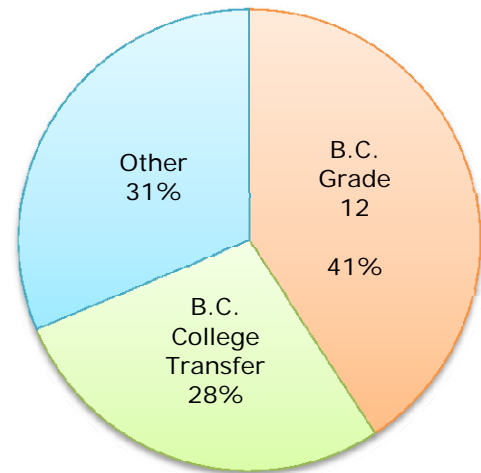
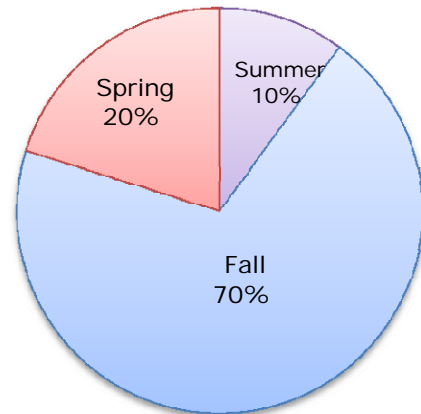


Year/ Admission Category	Summer	Fall	Spring	Total	Percent Total
2006/07	900	4,381	1,101	6,382	100.0%
B.C. Grade 12	72	2,521	173	2,766	43.3%
B.C. College Transfer	612	901	563	2,076	32.5%
Degree Holder	60	301	151	512	8.0%
University Transfer	46	213	81	340	5.3%
Non B.C. High School	31	259	46	336	5.3%
Mature	14	56	24	94	1.5%
Other	65	130	63	258	4.0%
2007/08	704	5,386	1,414	7,504	100.0%
B.C. Grade 12	83	3,285	205	3,573	47.6%
B.C. College Transfer	396	1,032	696	2,124	28.3%
Degree Holder	75	279	185	539	7.2%
University Transfer	43	223	111	377	5.0%
Non B.C. High School	28	296	74	398	5.3%
Mature	10	94	38	142	1.9%
Other	69	177	105	351	4.7%
2008/09	683	5,421	1,293	7,397	100.0%
B.C. Grade 12	43	3,094	137	3,274	44.3%
B.C. College Transfer	390	1,066	614	2,070	28.0%
Degree Holder	69	316	200	585	7.9%
University Transfer	39	267	116	422	5.7%
Non B.C. High School	33	386	107	526	7.1%
Mature	11	101	30	142	1.9%
Other	98	191	89	378	5.1%
2009/10	752	5,377	1,248	7,377	100.0%
B.C. Grade 12	61	2,786	137	2,984	40.5%
B.C. College Transfer	413	1,104	500	2,017	27.3%
Degree Holder	77	353	219	649	8.8%
University Transfer	62	279	125	466	6.3%
Non B.C. High School	39	559	148	746	10.1%
Mature	47	64	36	147	2.0%
Other	53	232	83	368	5.0%
2010/11	750	5,192	1,505	7,447	100.0%
B.C. Grade 12	55	2,769	213	3,037	40.8%
B.C. College Transfer	369	1,035	674	2,078	27.9%
Degree Holder	115	299	232	646	8.7%
University Transfer	57	253	115	425	5.7%
Non B.C. High School	49	579	154	782	10.5%
Mature	37	56	26	119	1.6%
Other	68	201	91	360	4.8%

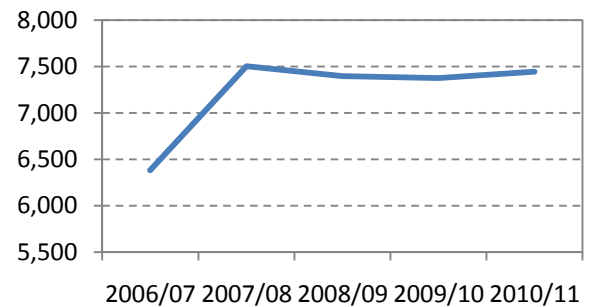
New Intake by Admission Category, 2010/11



New Intake by Semester, 2010/11



New Intake by Year



- Notes:
- a) B.C. College Transfer includes students with an associate degree from a B.C. college.
 - b) Mature students refer to those twenty-three years of age or over who are not eligible for admission under another category.
 - c) 'Other' includes students from technical programs, non B.C. college transfers, special entries, visiting students, ABE provincial diploma and concurrent studies students.

Source: SSC6400, SFUSR514