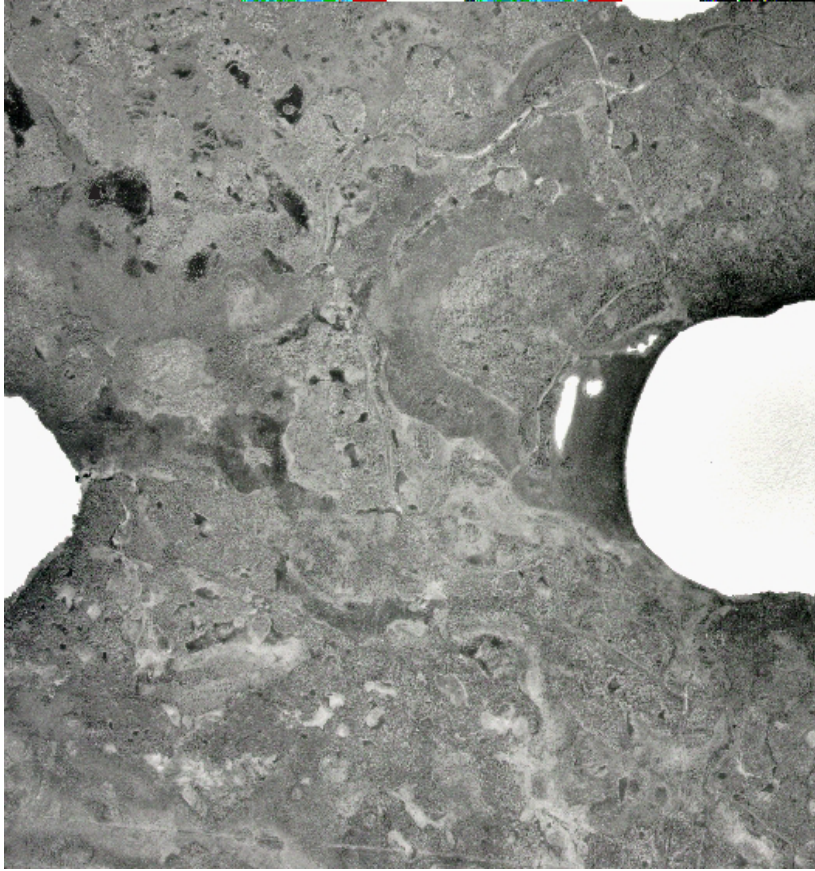


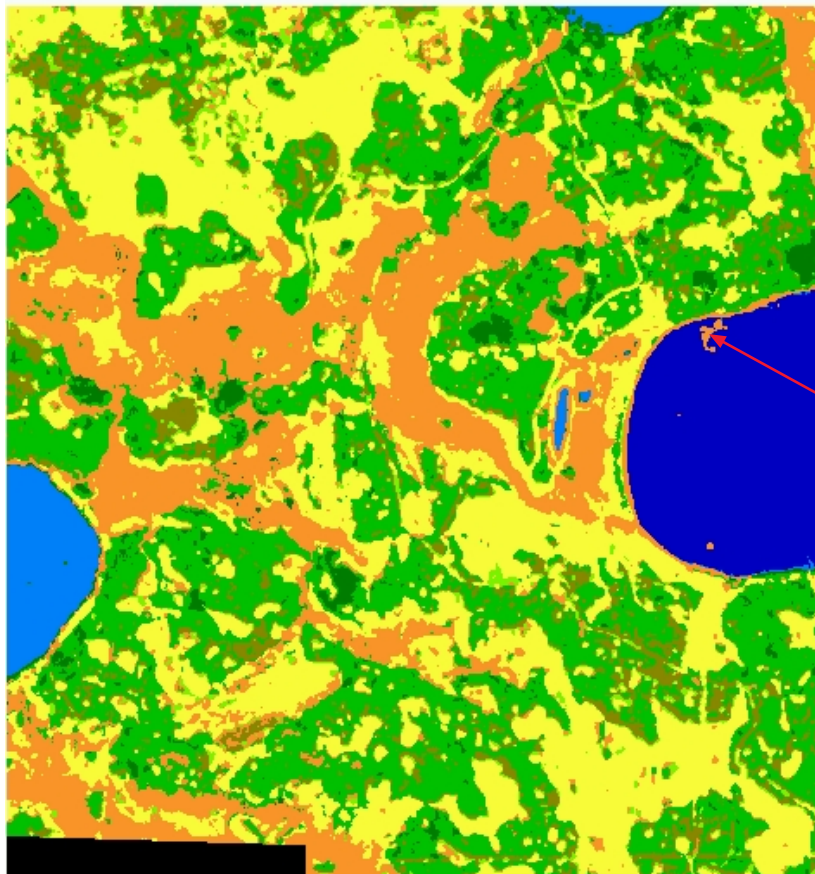
17 Section of IKONOS classified image and aerial photograph for the corresponding area.

N
|



Aerial Photograph

This photograph is much older than the IKONOS image (> 10 years)



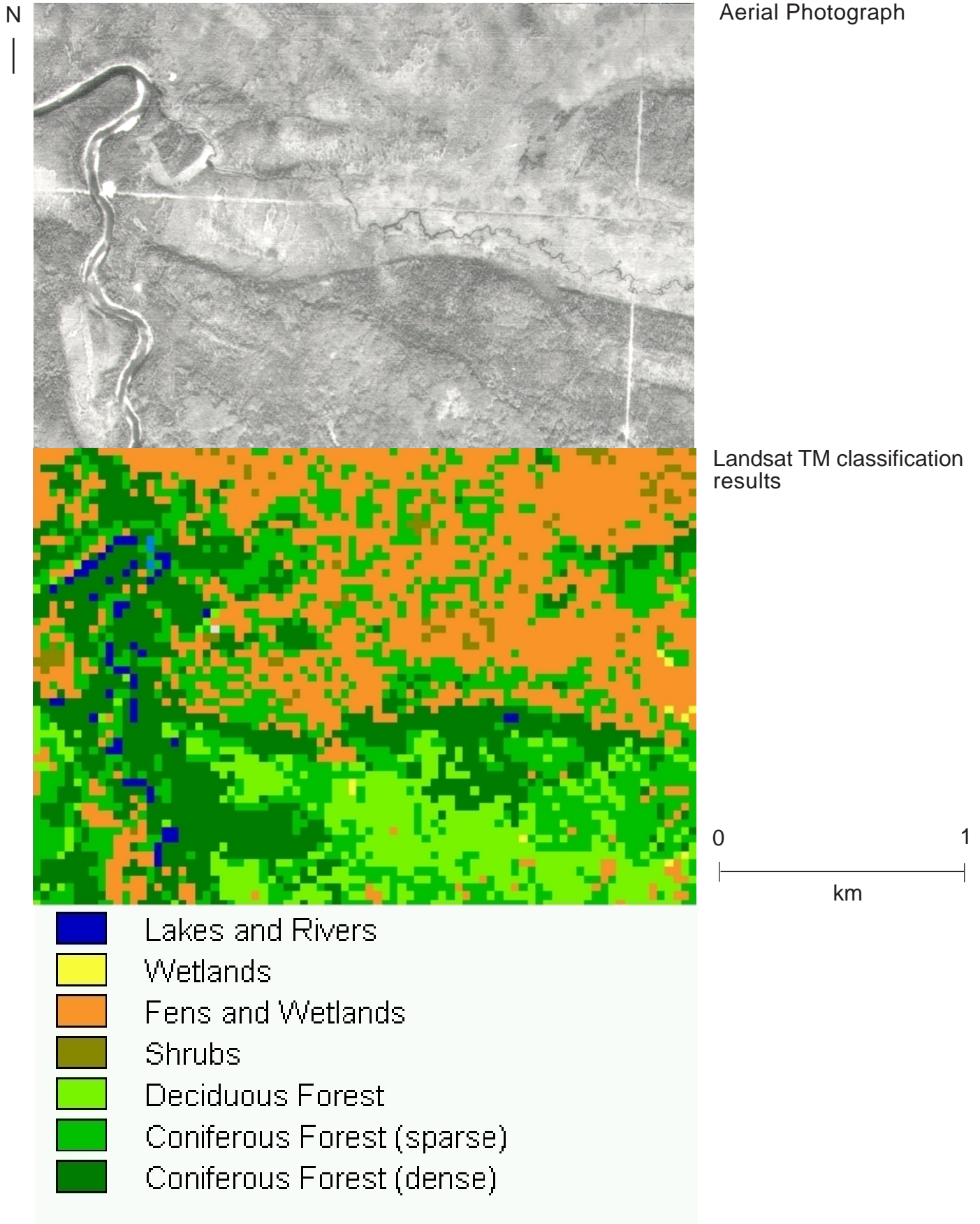
- Outside Scotty Cr. basin
- Barren Land
- Ponds (or lakes with aquatic vegetation)
- Lakes and Rivers
- Wetlands
- Fens and Wetlands
- Shrubs
- Deciduous Forest
- Coniferous Forest (sparse)
- Coniferous Forest (dense)

classification error ("fen" in the lake) but may have been floating aquatic vegetation

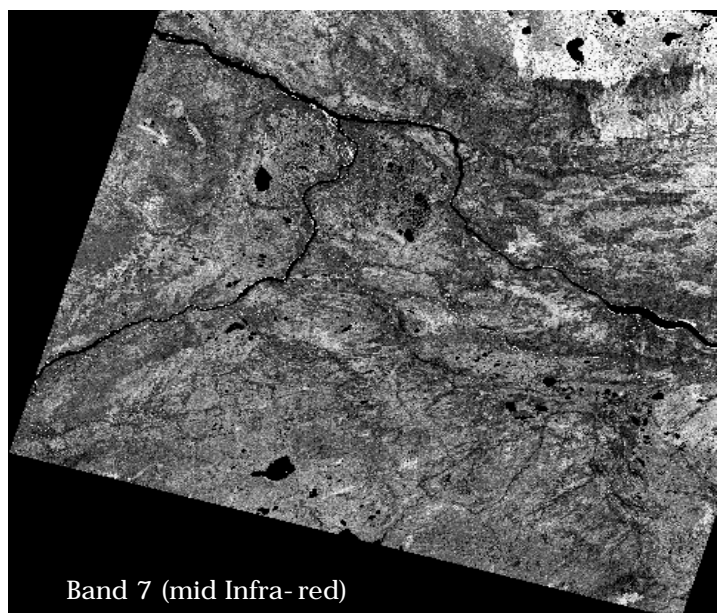
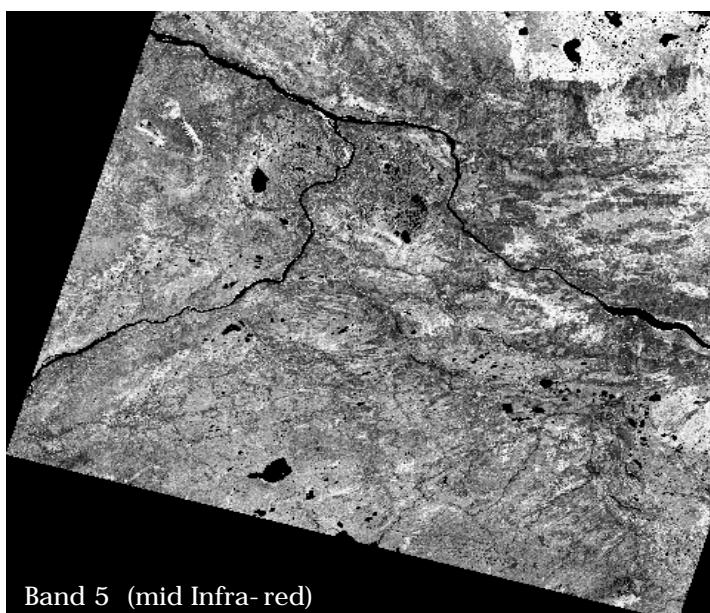
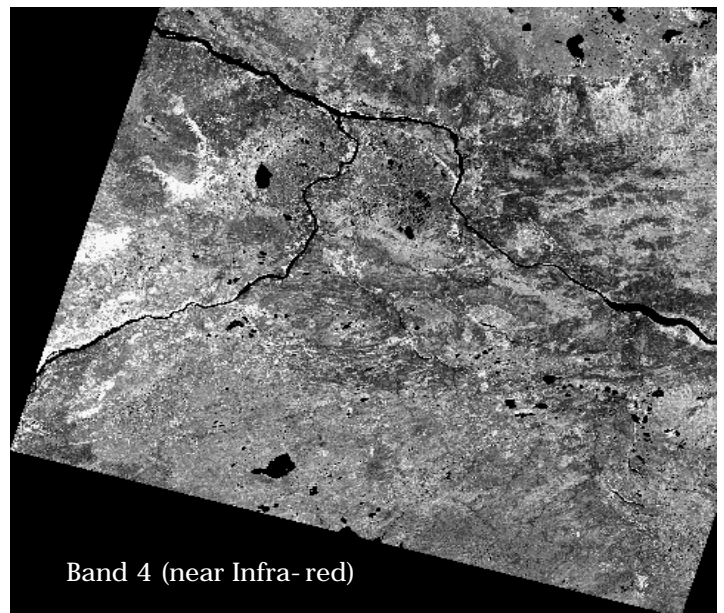
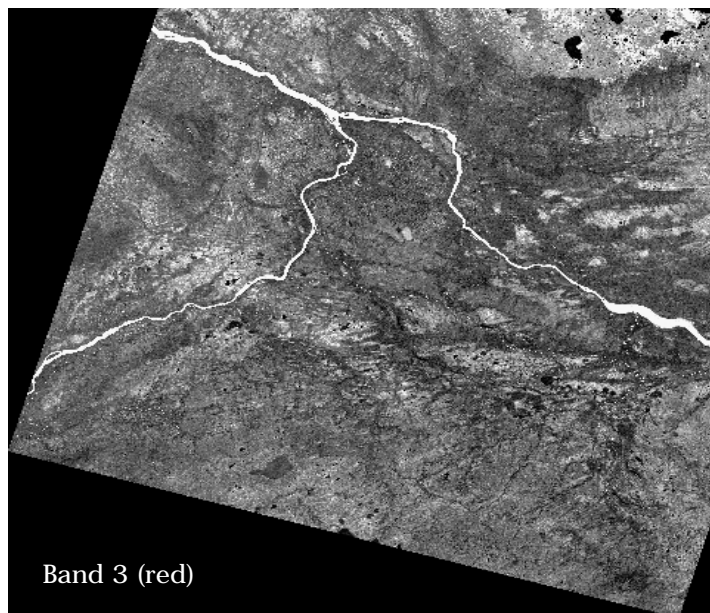
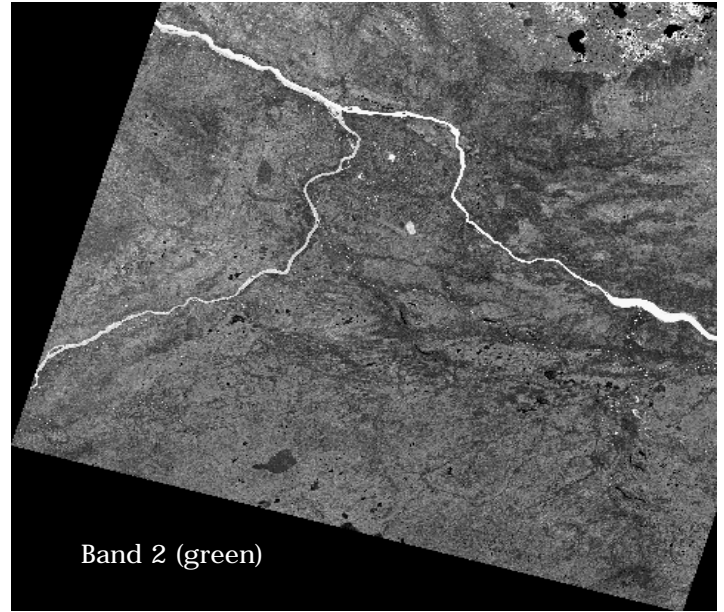
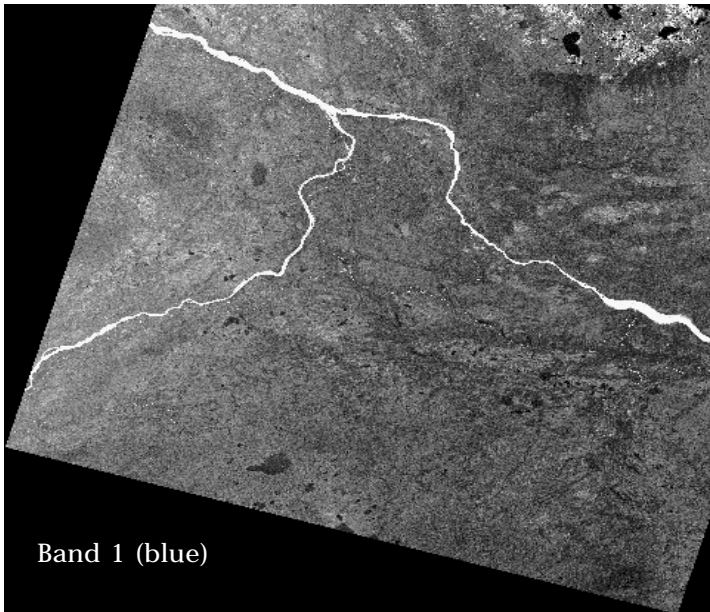
IKONOS image classification results

0 500
| meters

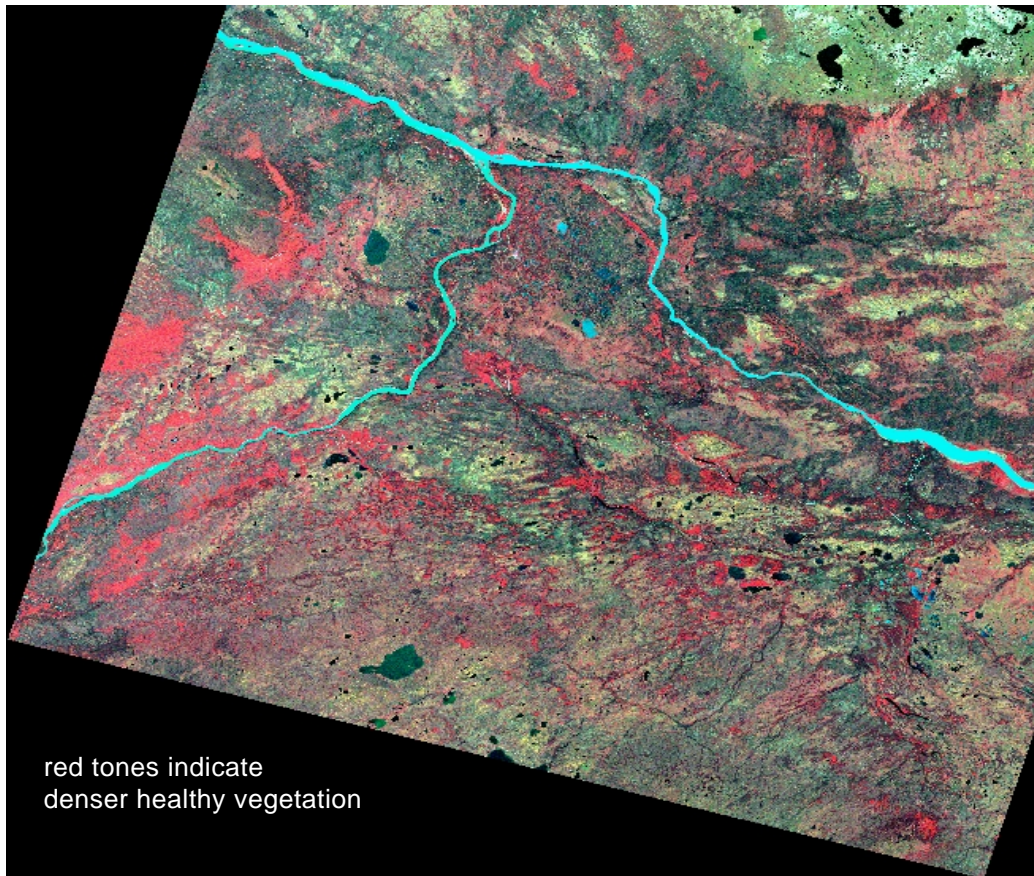
18 Section of Landsat TM classified image and aerial photograph for the corresponding area.



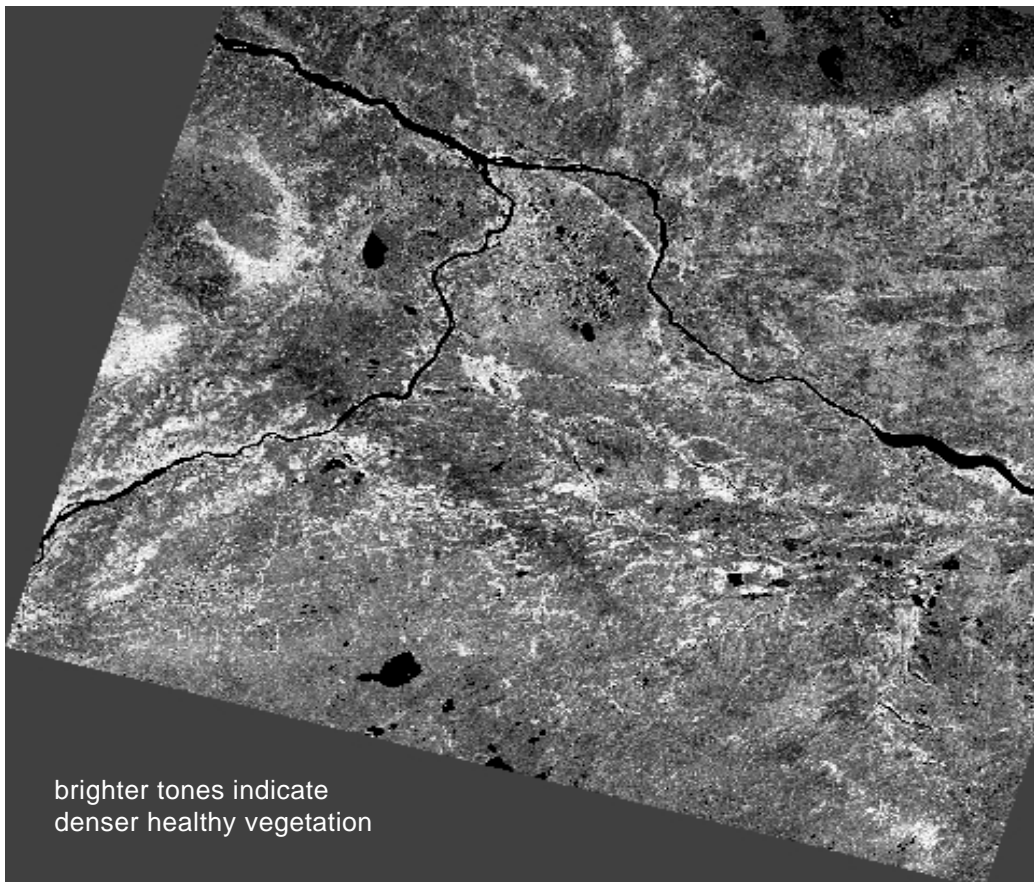
19 LANDSAT IMAGE DISPLAYED WITH DIFFERENT BANDS



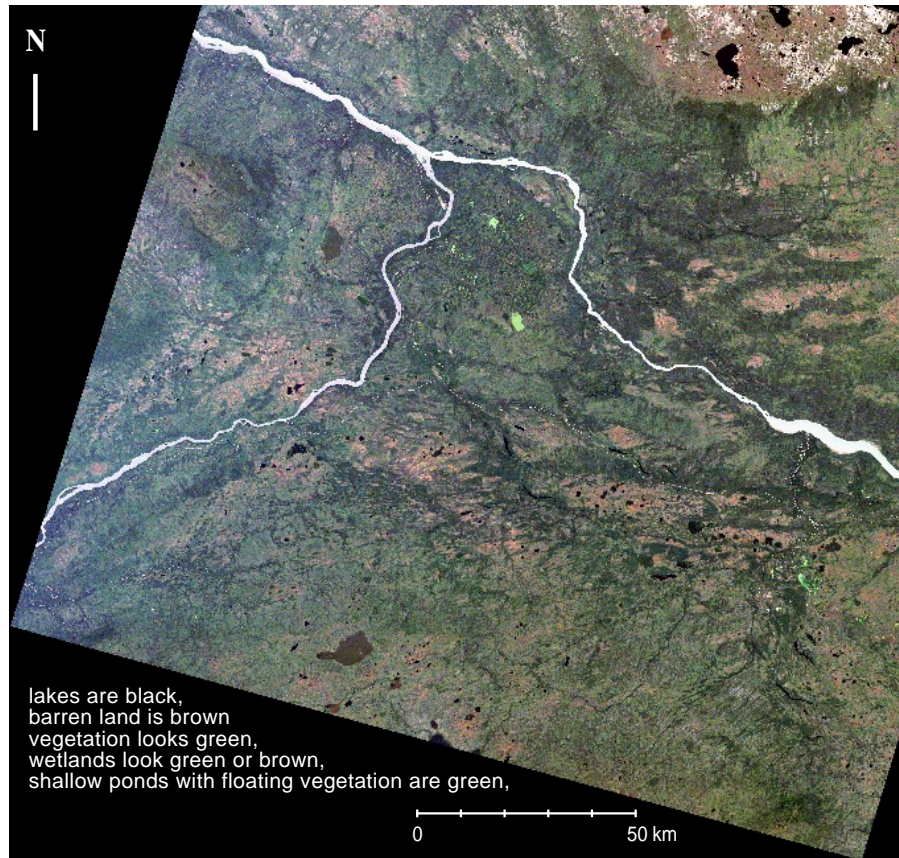
20 LANDSAT FALSE COLOUR COMPOSITE BAND 2,3,4



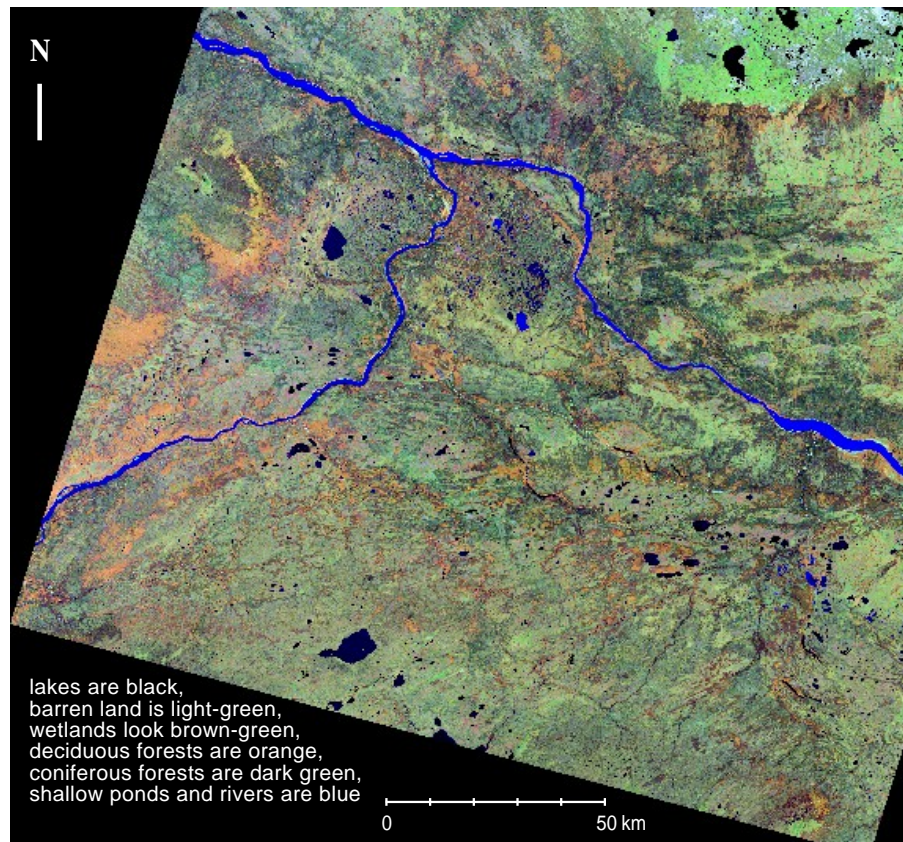
21 LANDSAT NDVI RATIO IMAGE



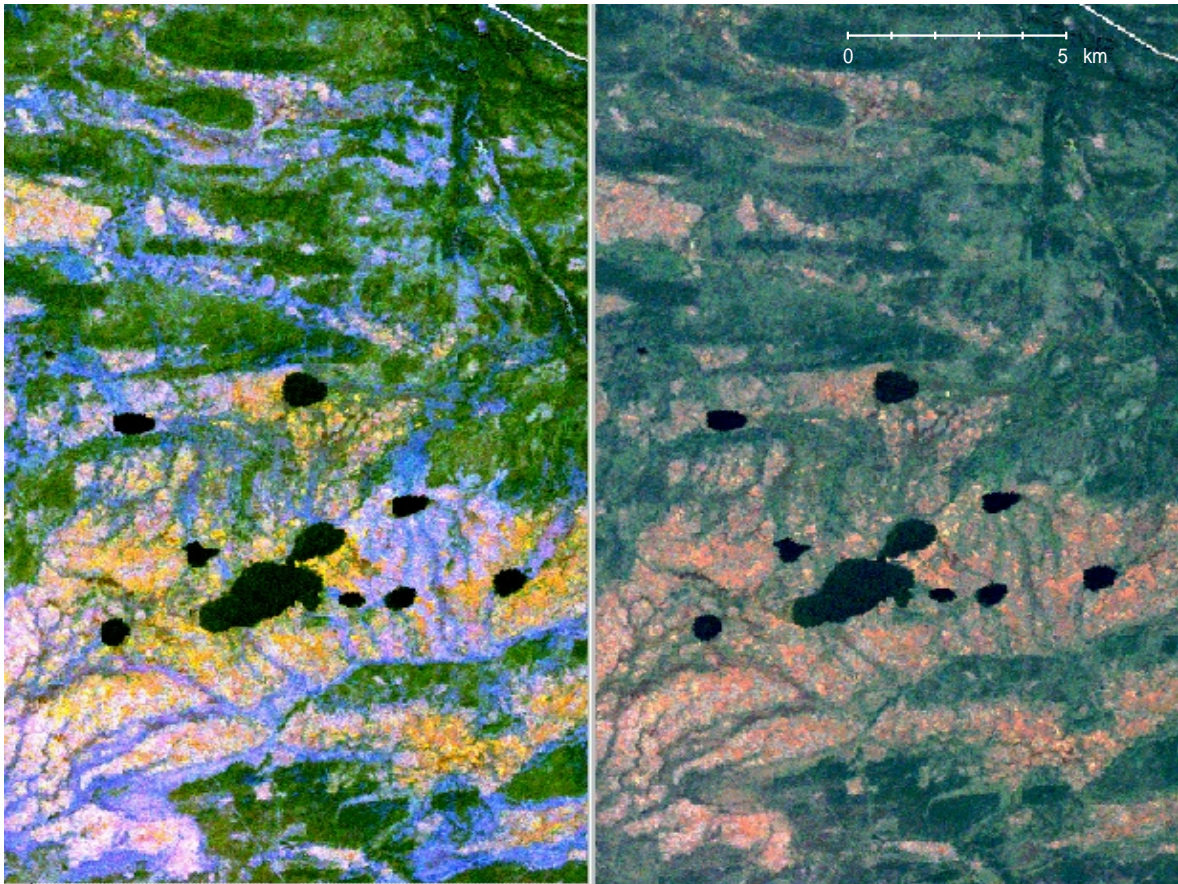
22 LANDSAT COLOUR COMPOSITE IMAGE: VISIBLE SPECTRUM BANDS 1(BLUE), 2(GREEN), 3(RED)



23 LANDSAT COLOUR COMPOSITE IMAGE: ENHANCED BANDS 4, 5, AND 2



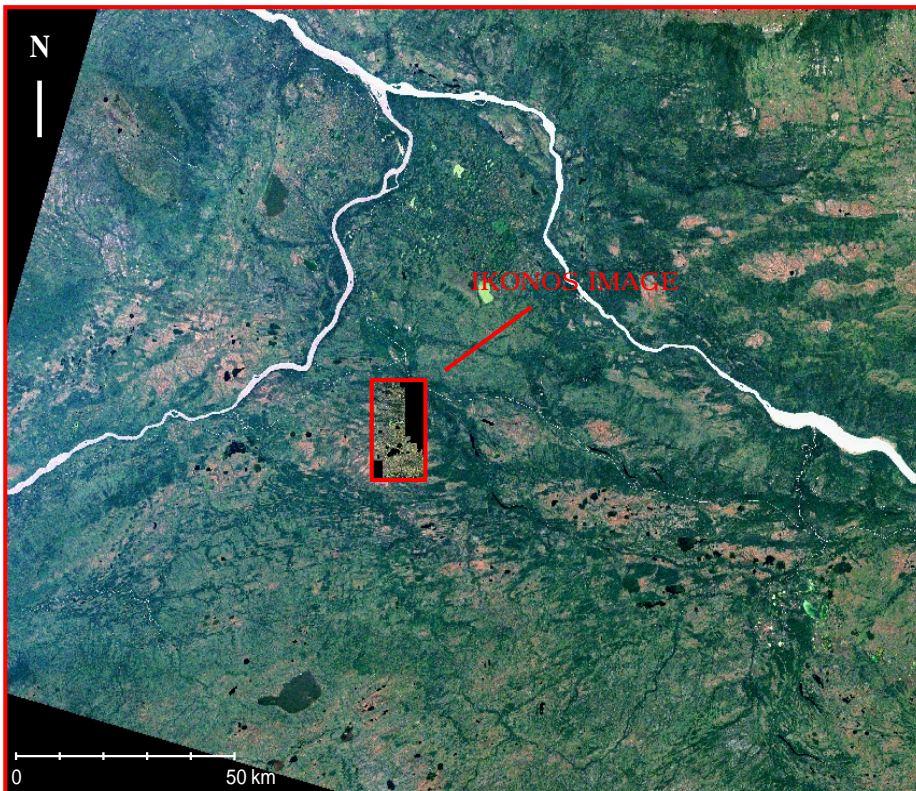
24 LANDSAT TM IMAGES OF SCOTTY CREEK BASIN



False Colour Composite (bands 2,4,5)

True Colour Composite (bands 1,2,3)

25 SPATIAL EXTENT OF IKONOS IMAGE COMPARED TO LANDSAT TM IMAGE.



LANDSAT IMAGE

IKONOS IMAGE

Spatial extent of the IKONOS image compared to the spatial extent of the Landsat image. IKONOS image covers only one half of Scotty Creek basin in the lower Liard River