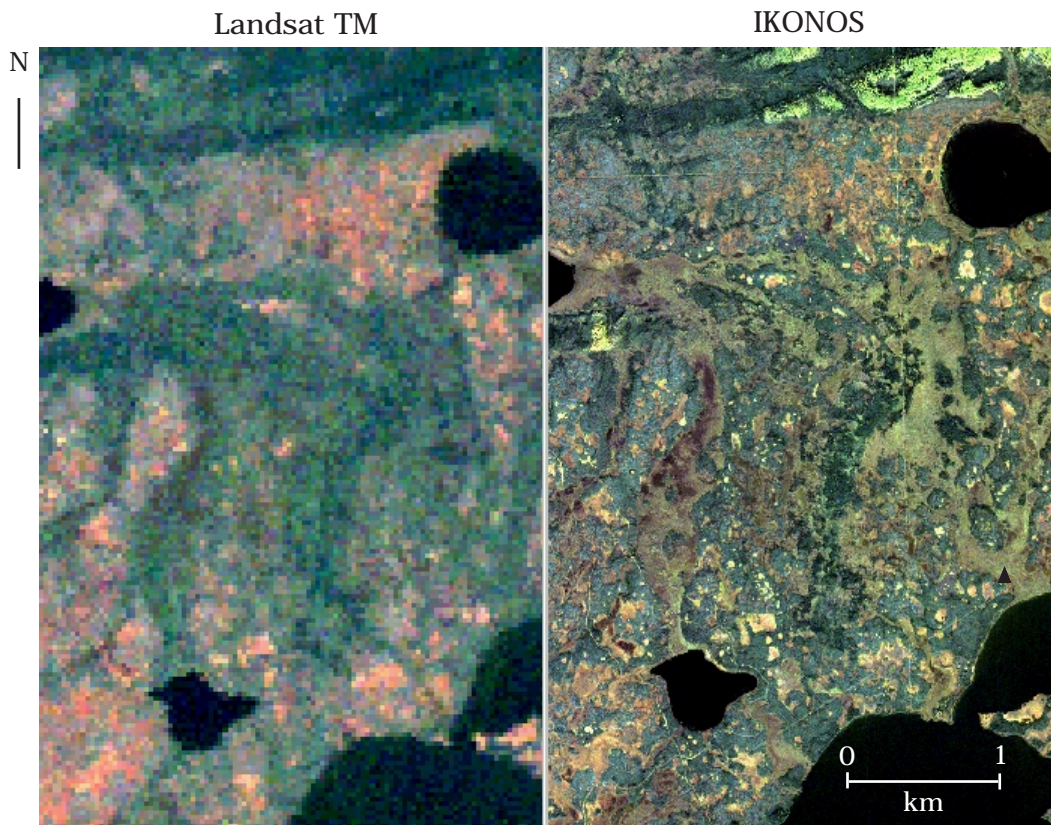
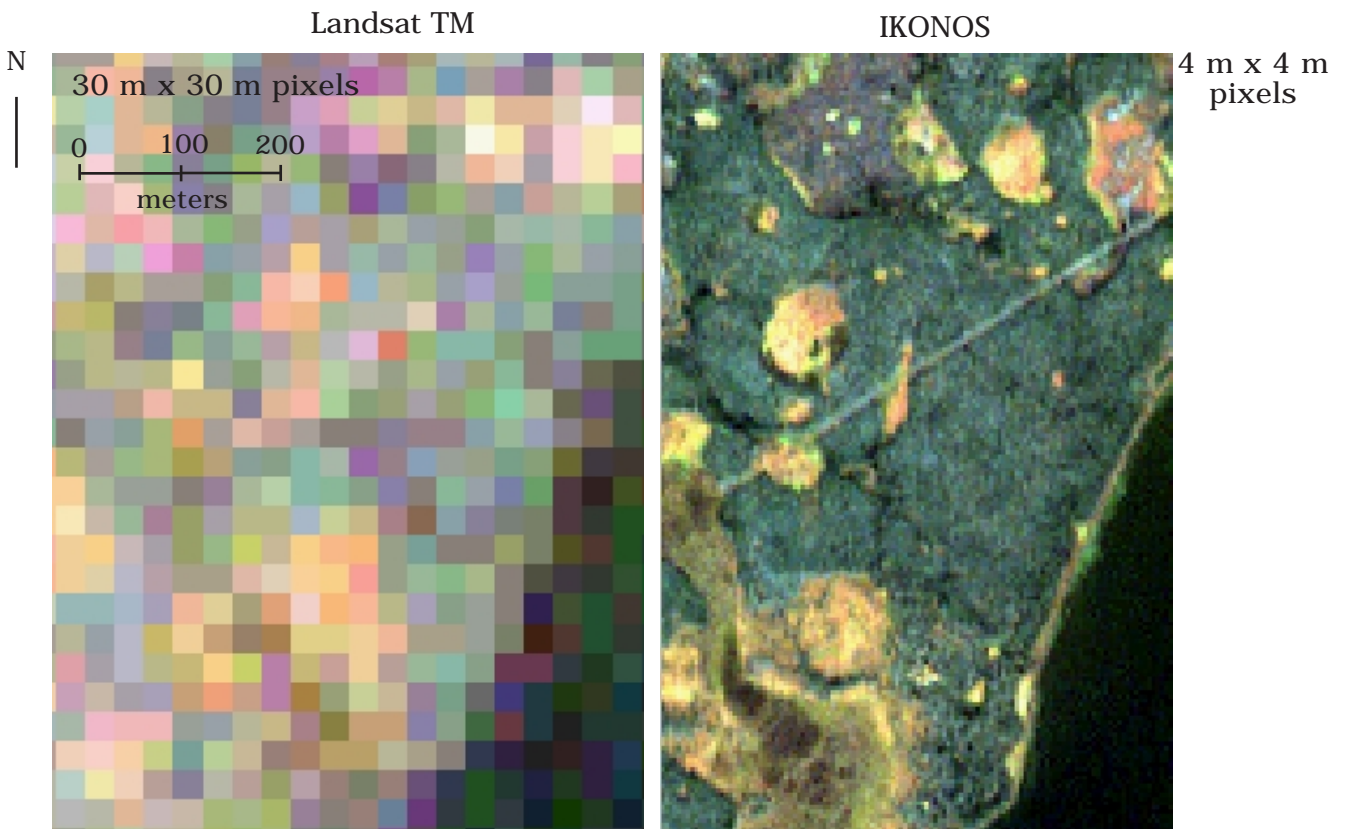
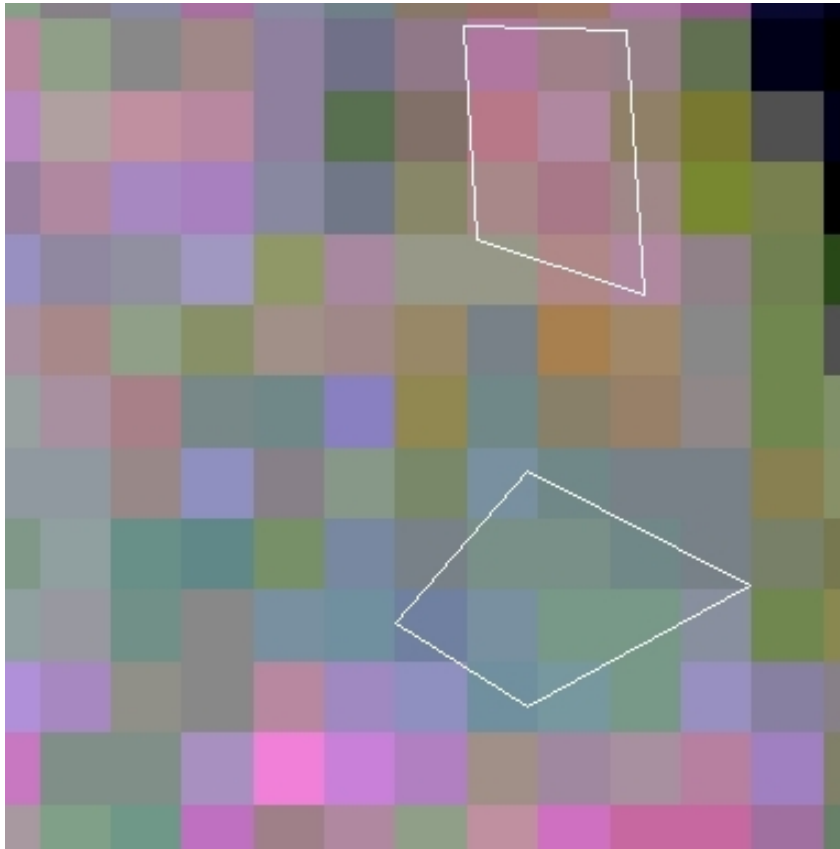


26 Comparing Landsat TM and IKONOS images in visible bands colour composite.



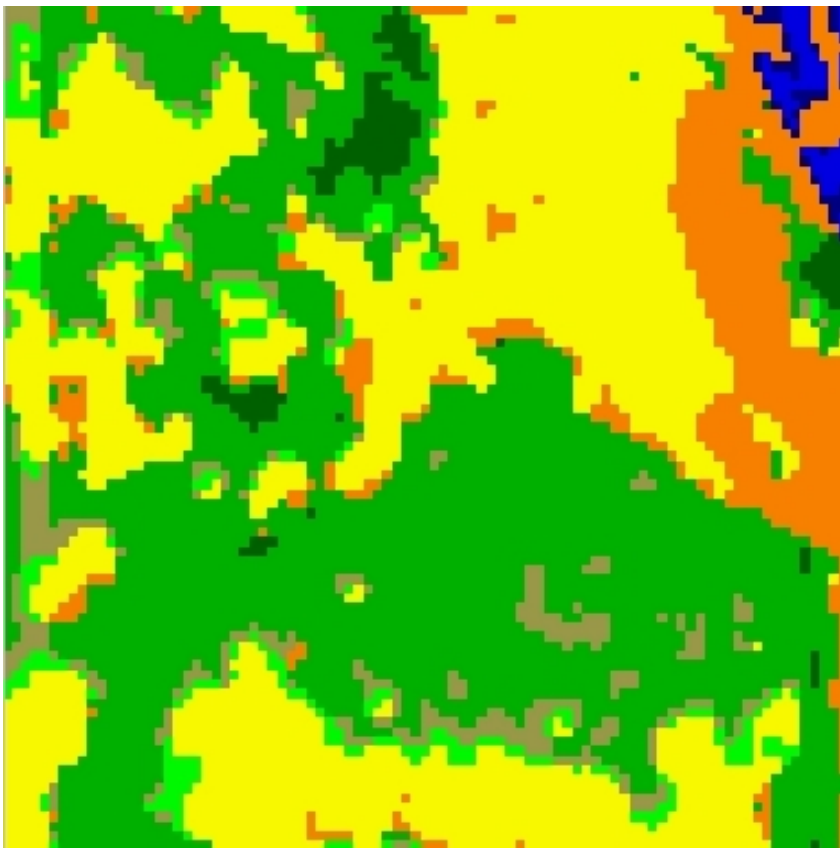
27 Comparing resolution of Landsat TM and IKONOS images





Landsat TM image  
(training areas)

pixel size  
30 m x 30 m

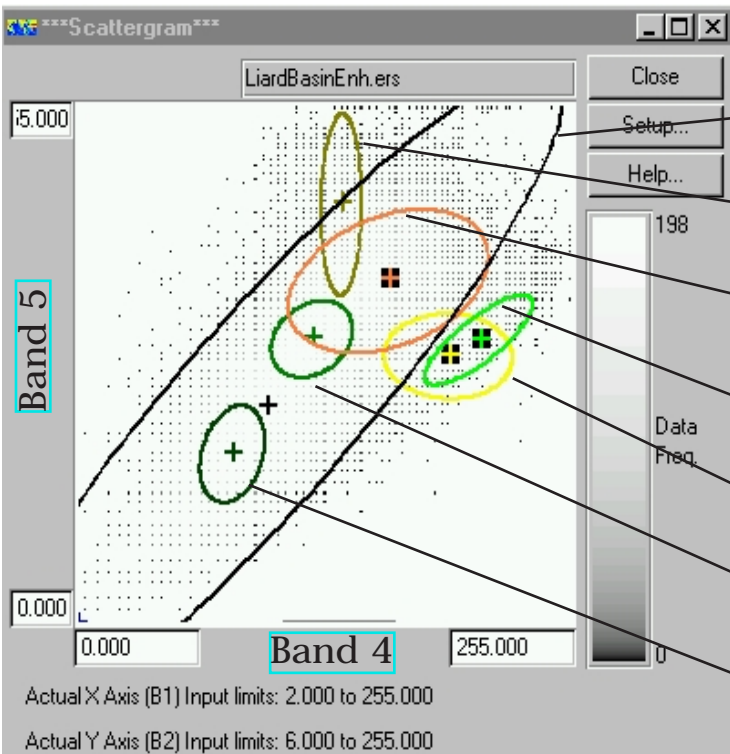
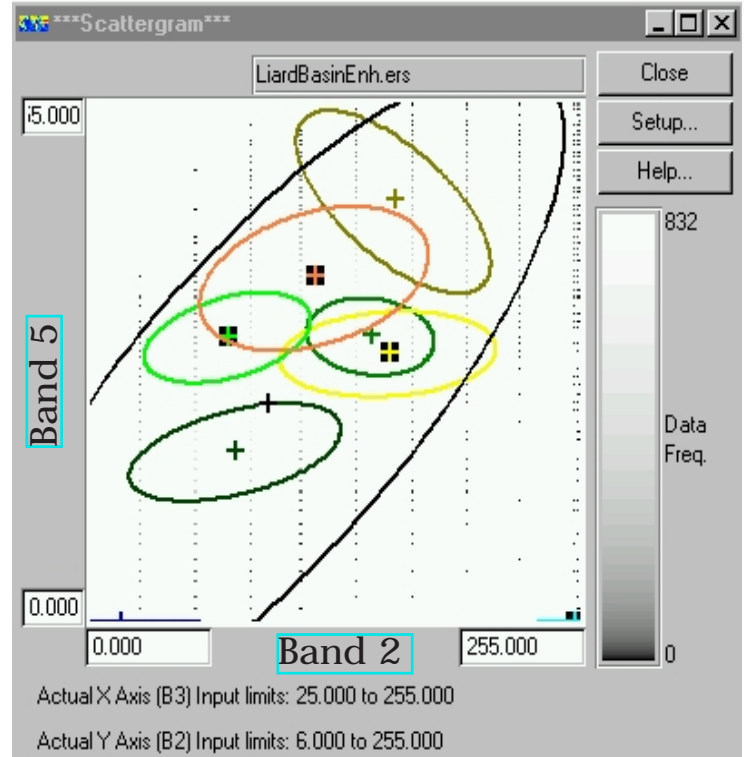
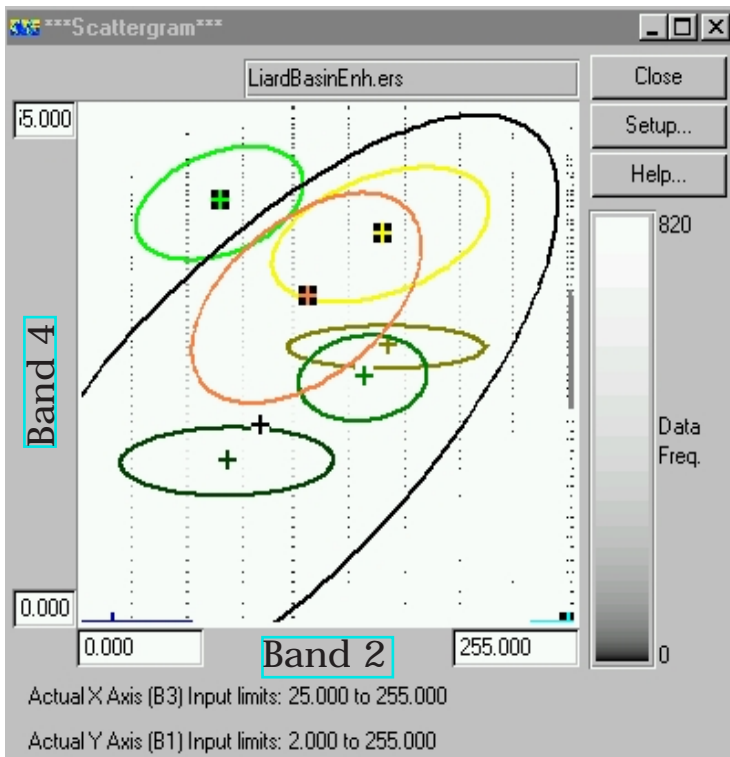


IKONOS image  
(classification results)

The same area is  
shown as above  
for Landsat TM  
image

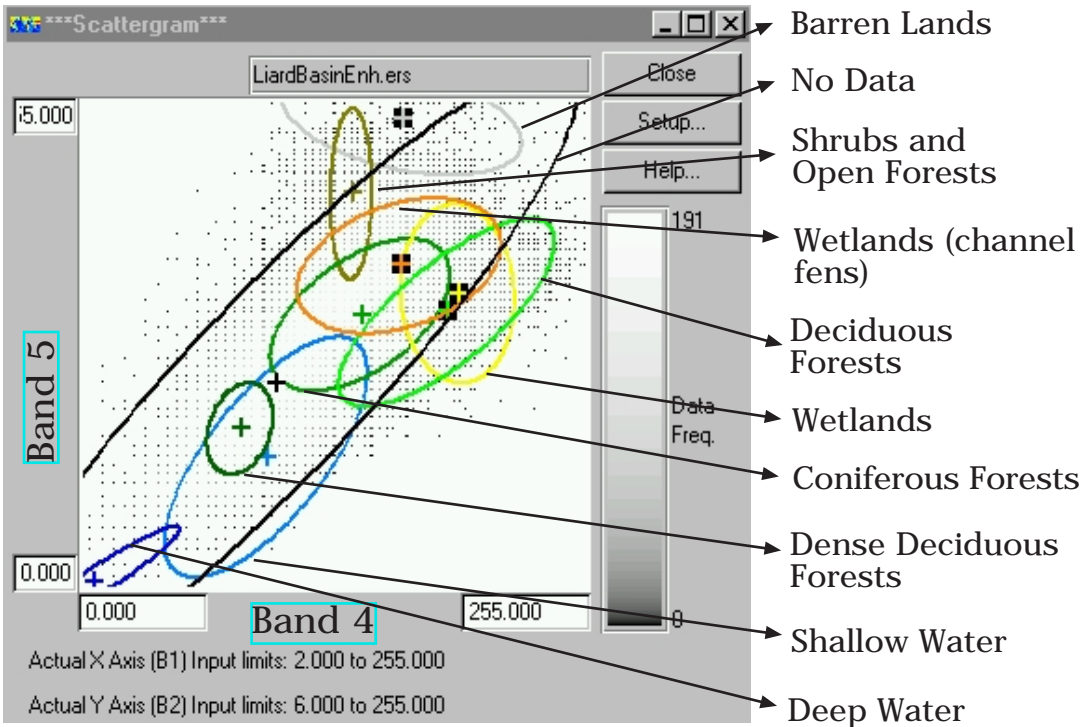
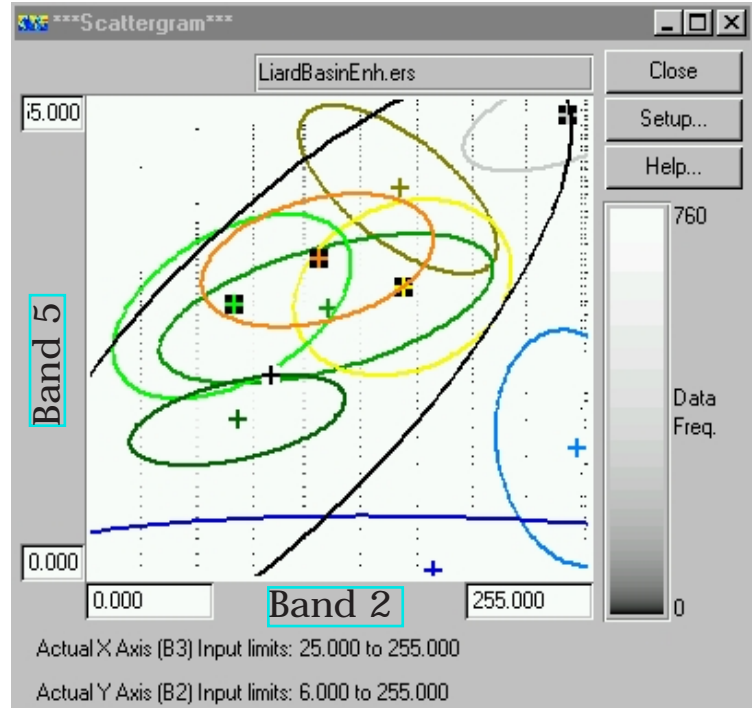
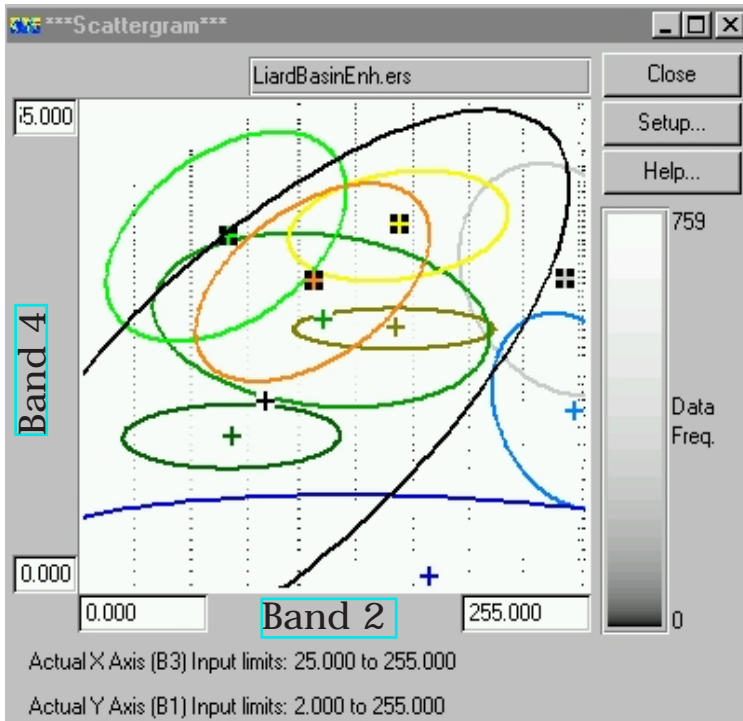
pixel size  
4 m x 4 m

29 SCATTERGRAMS OF TRAINING POLYGONS IN DIFFERENT BANDS FOR LANDSAT IMAGE



- No Data
- Shrubs and Open Forests
- Wetlands (channel fens)
- Deciduous Forests
- Wetlands
- Coniferous Forests
- Dense Deciduous Forests

30 SCATTERGRAMS OF TRAINING POLYGONS IN DIFFERENT BANDS FOR LANDSAT IMAGE

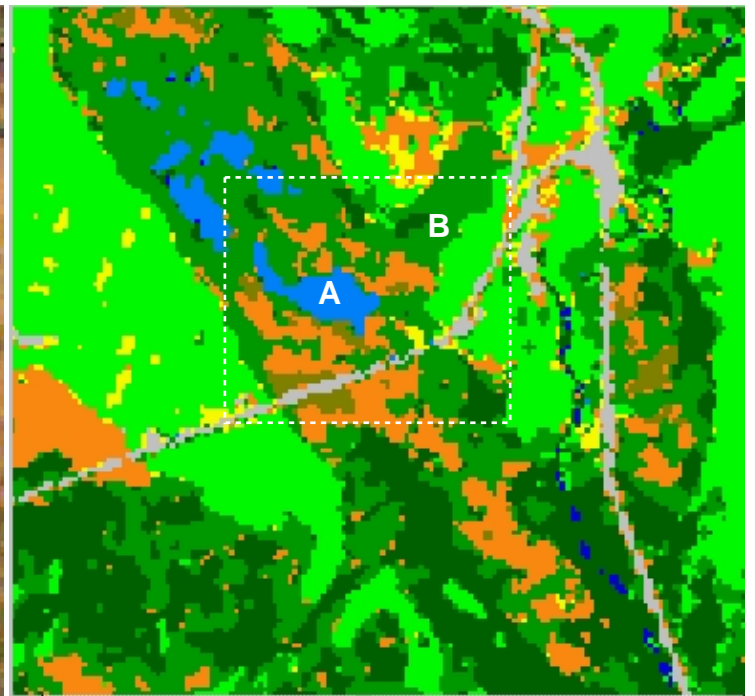
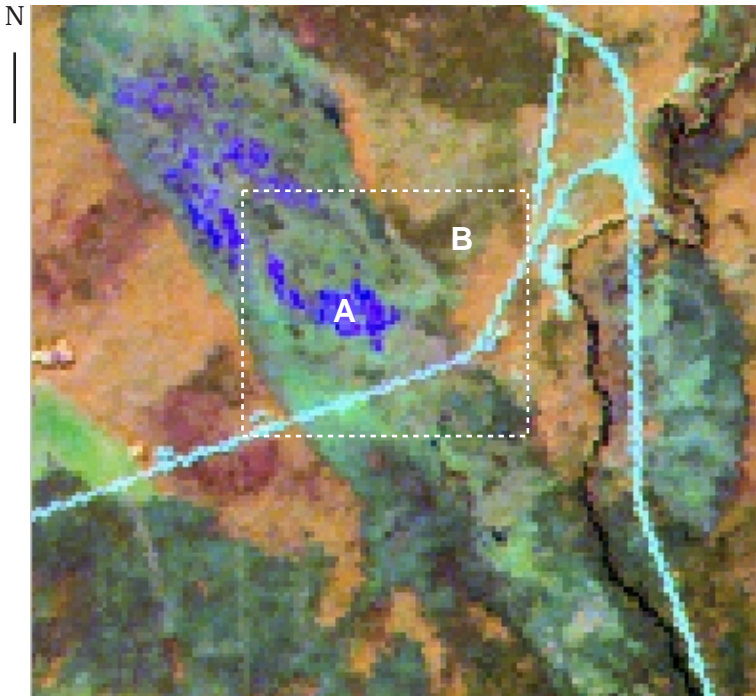


Comparing two results of supervised classification of Landsat TM image for a section of Mackenzie Highway (north of Scotty Creek basin).

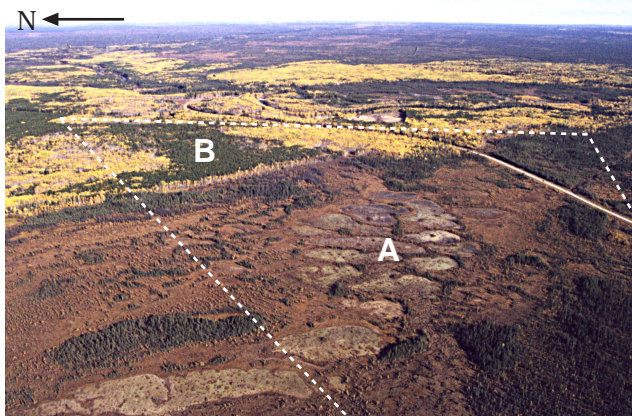
Enhanced Visible Composite

Improved classification

33

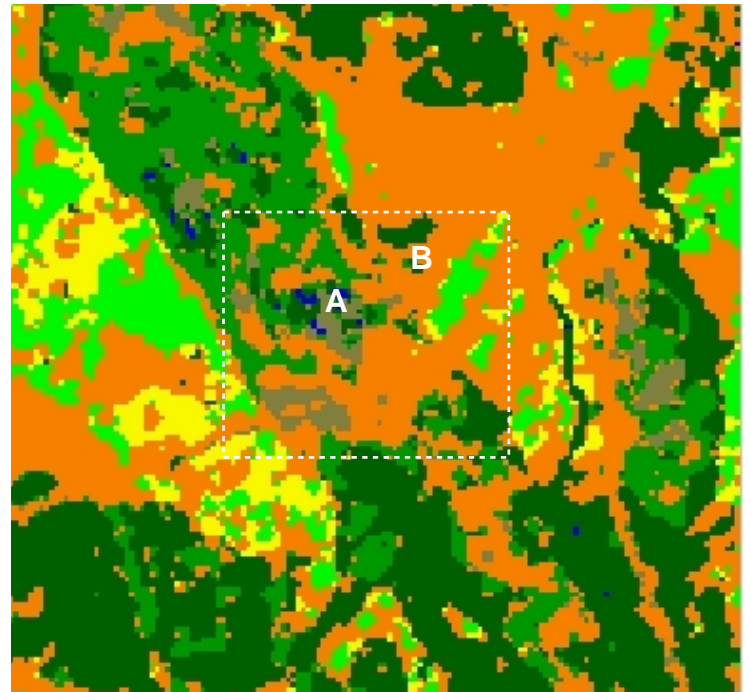


Photographs of highway crossing through large fen and deciduous stands.



Erroneous classification

31



Compare two different land cover types: ponds in a fen (A), and coniferous forest

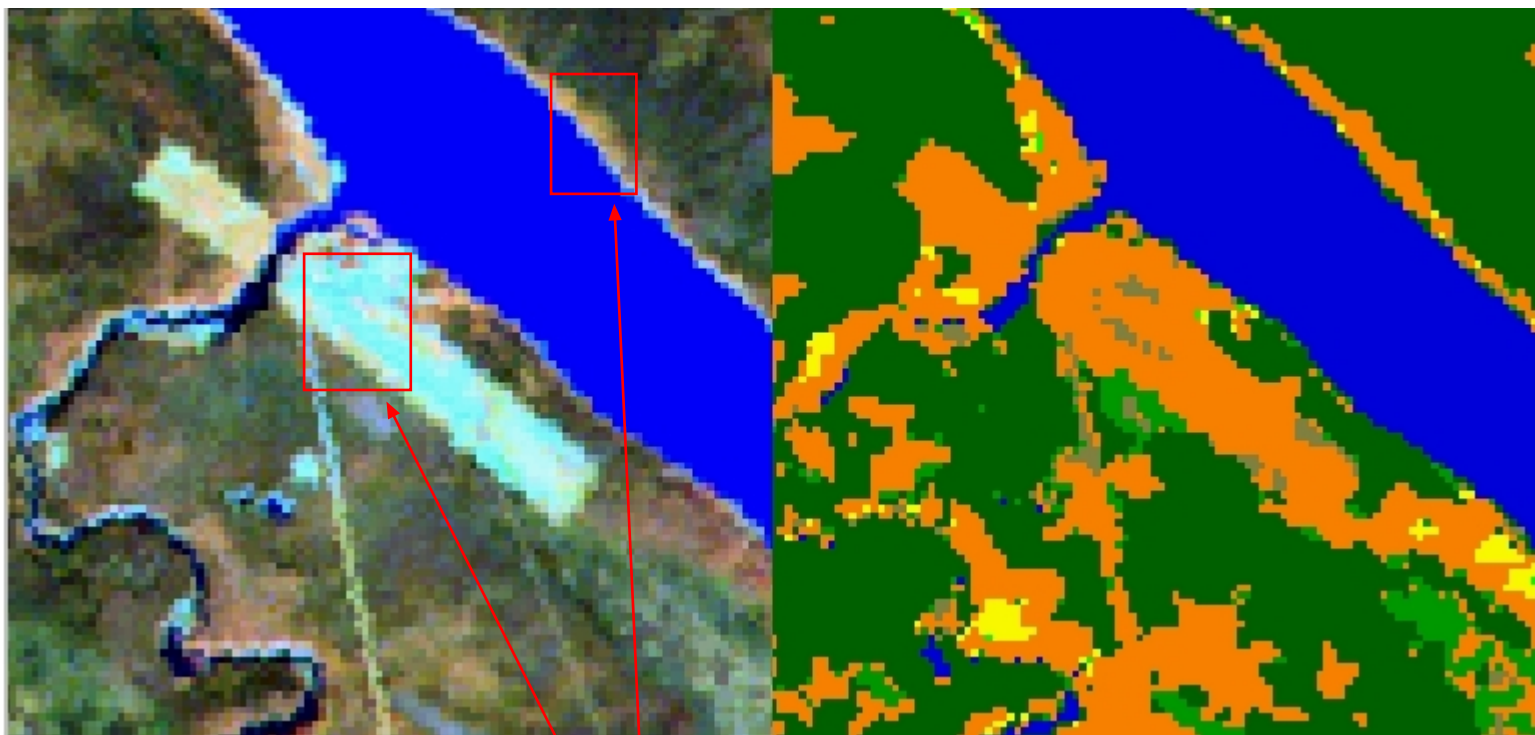
- |   |   |
|---|---|
|  Channel Fen |  Ponds       |
|  Coniferous  |  Wetlands    |
|  Deciduous   |  Barren land |

32 COMPARISON OF FORT SIMPSON'S AIRPORT IN LANDSAT IMAGE

34

classification of Landsat image using Ikonos training sites

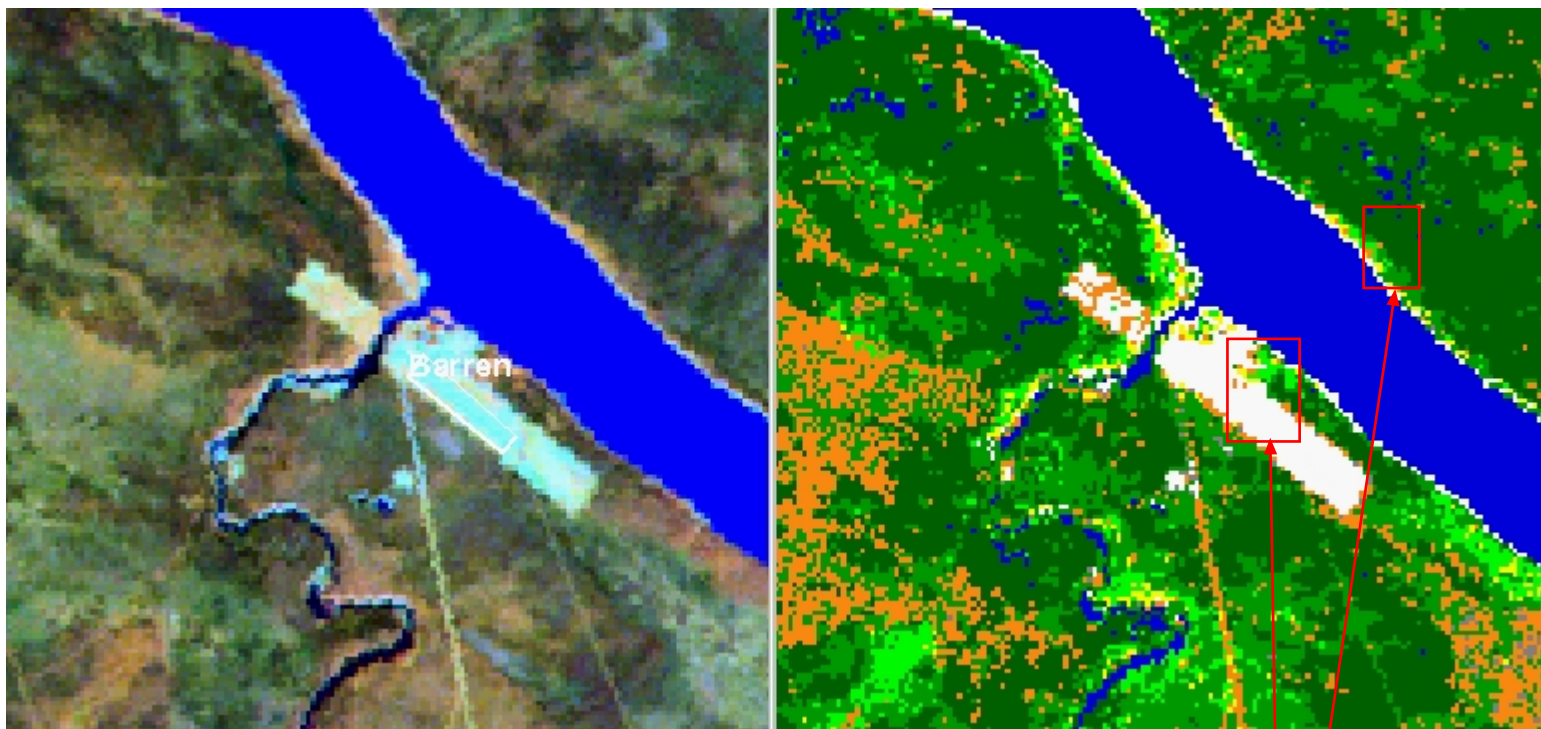
visible composite of landing strip



classified as fens

visible composite of landing strip

classification using newly defined training sites



classified as barren ground