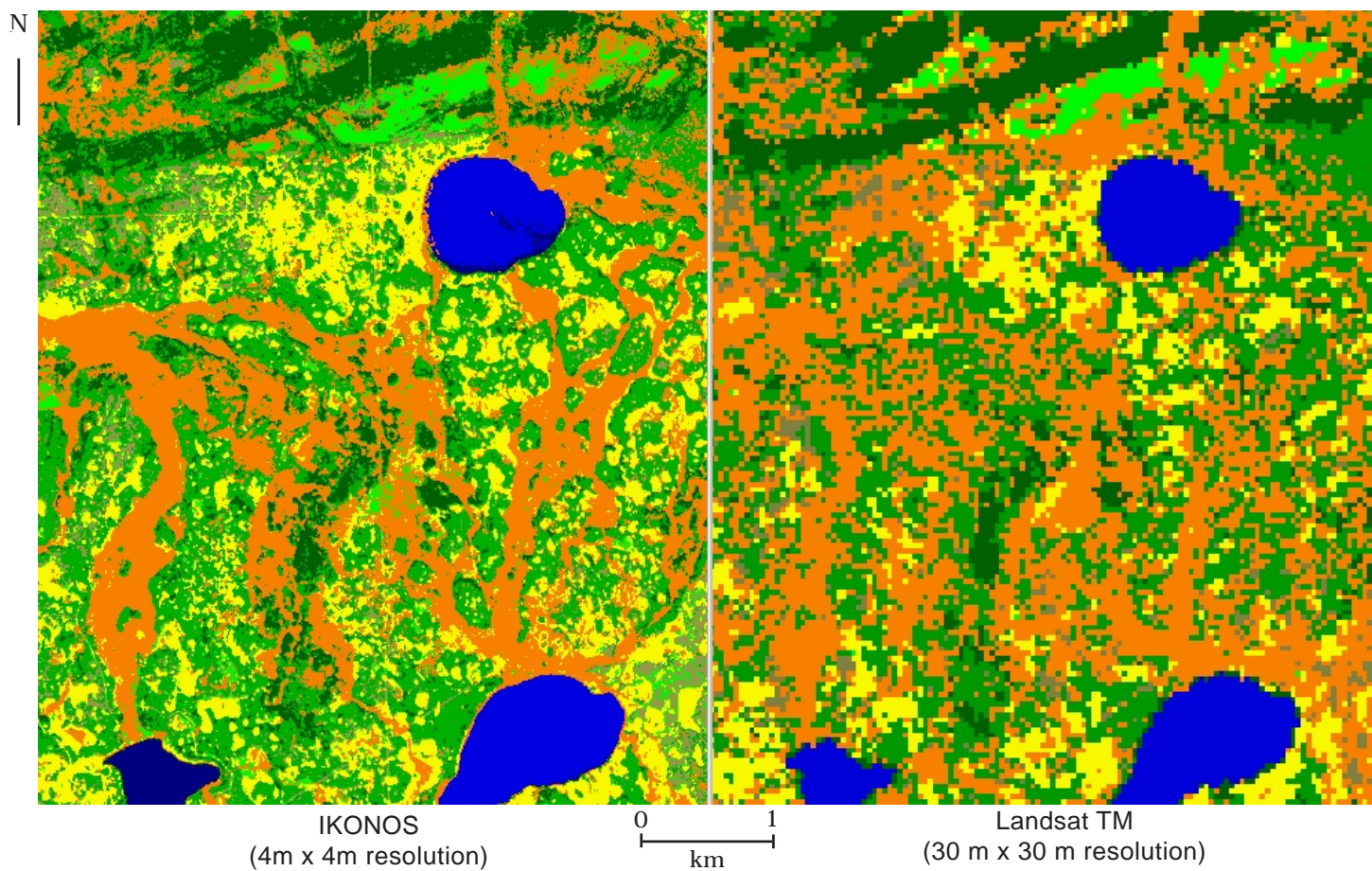
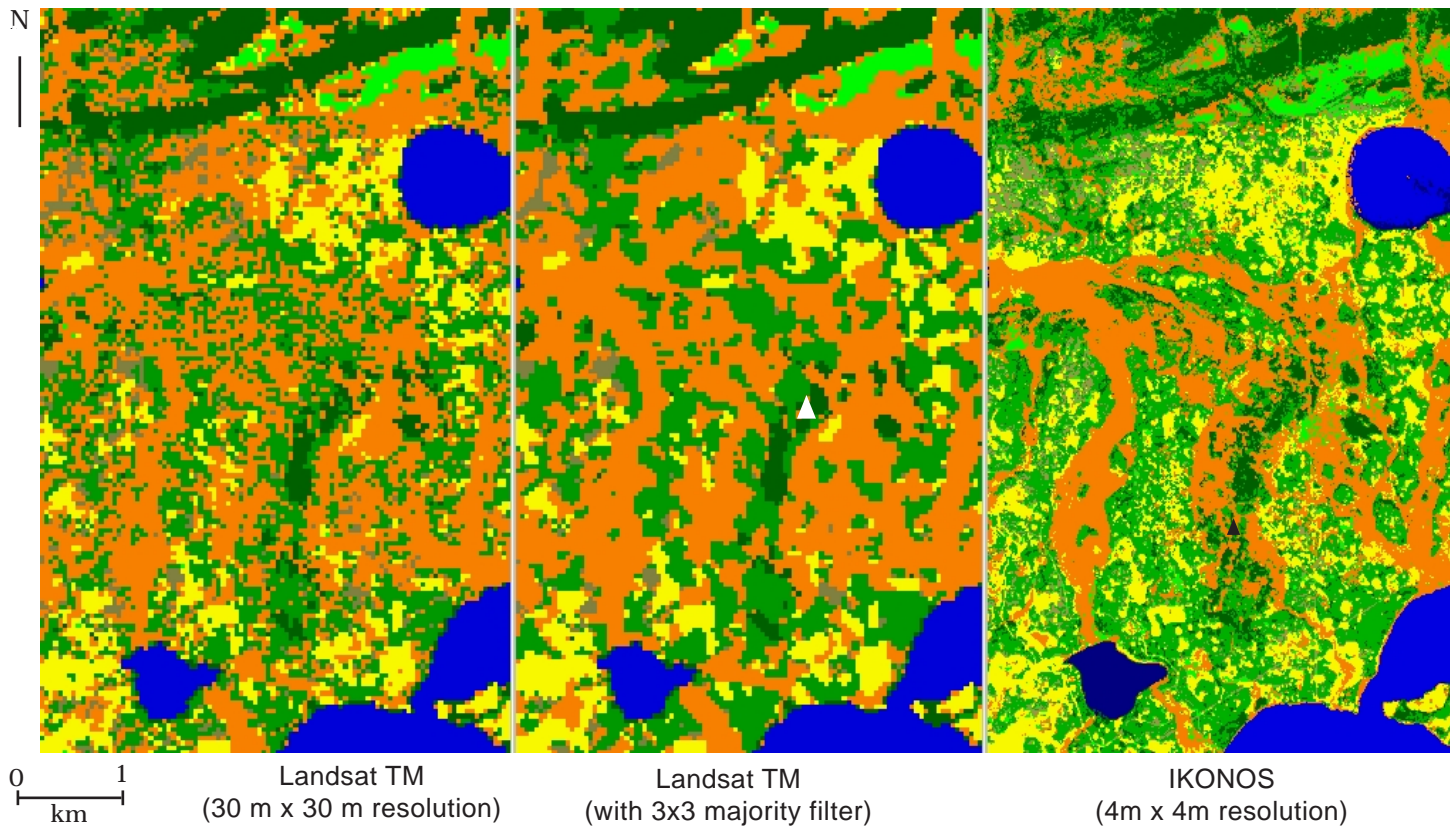
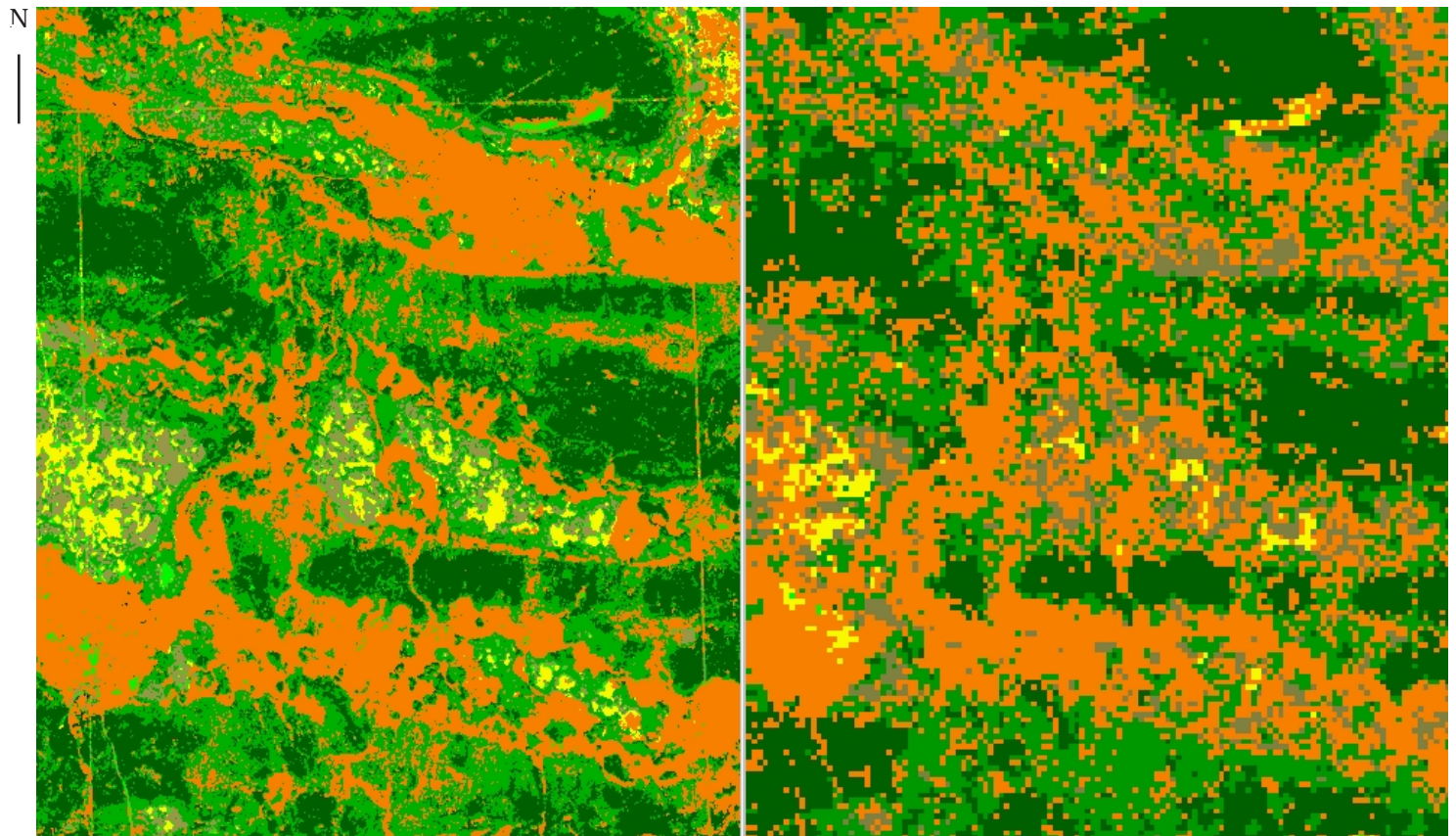
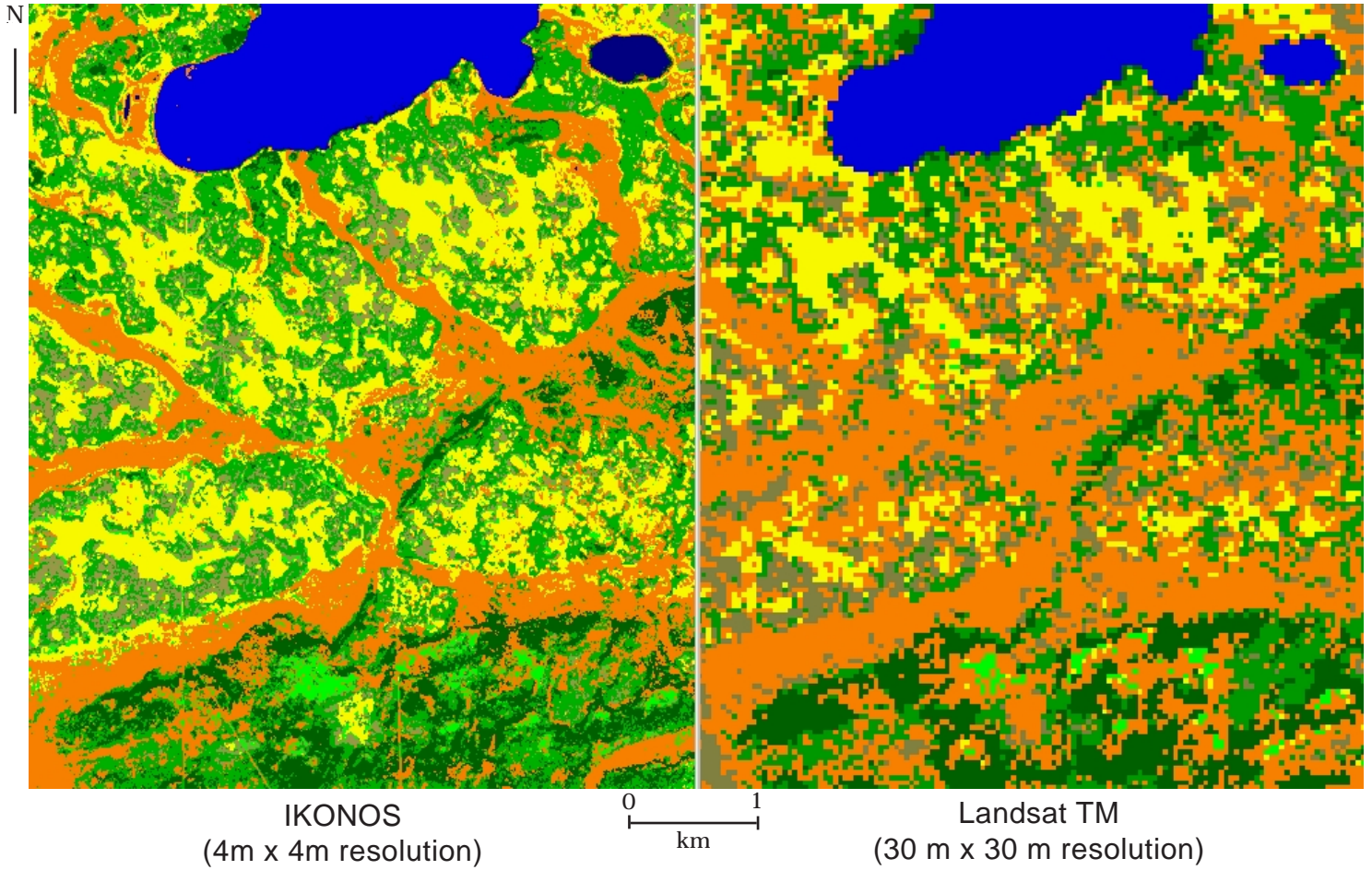


35

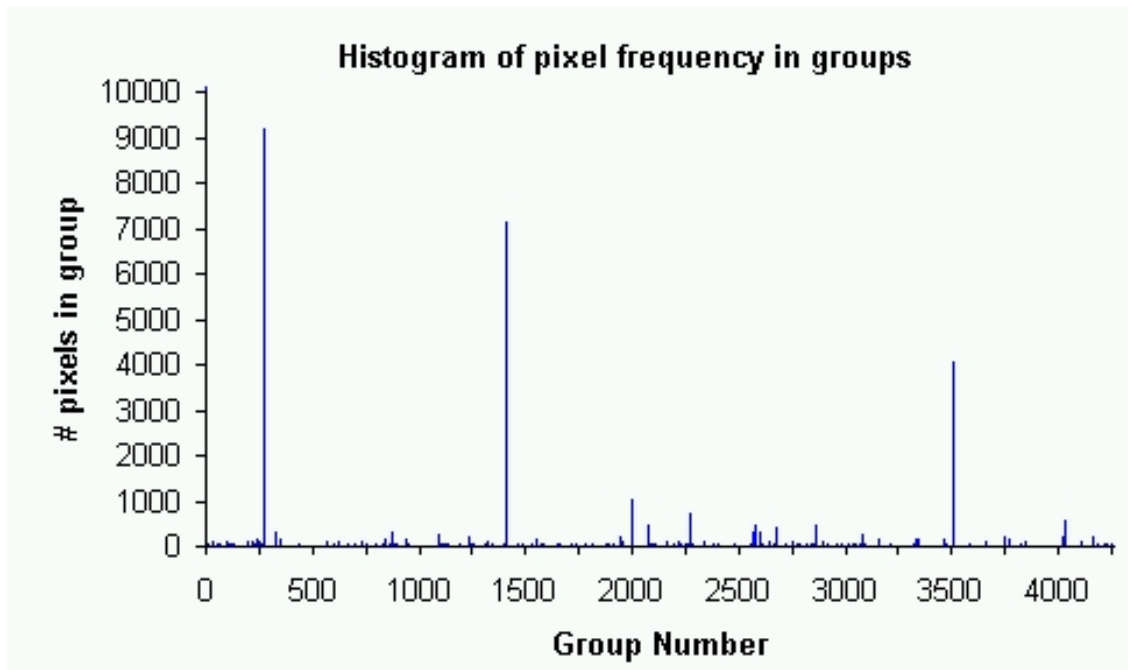
Results of classification of IKONOS and Landsat TM images for sections of Scotty Creek basin.



36 Results of classification of IKONOS and Landsat TM images for sections of Scotty Creek basin.



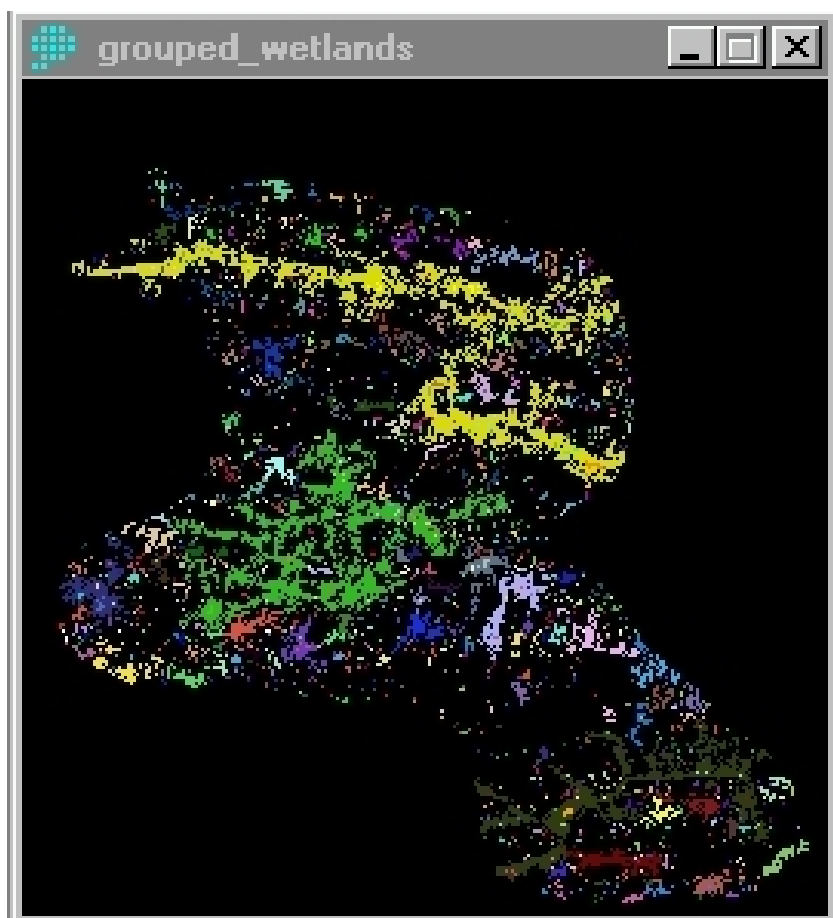
37 Grouping of Wetlands and group selection from histogram to represent connected wetlands.



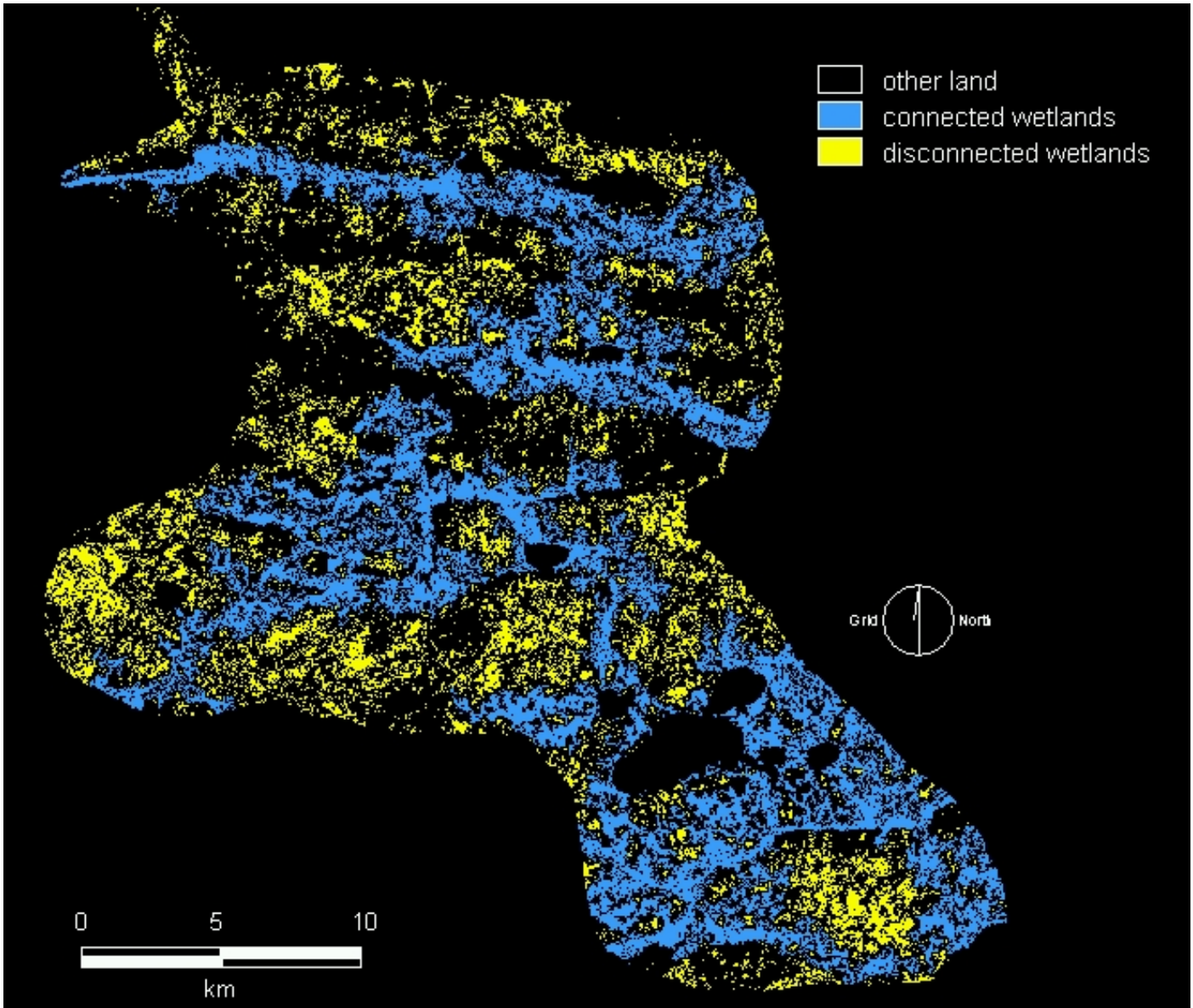
The histogram of the grouped pixels show the three major groups that will be used as the connected wetland. These are the channel fens and wetlands that connect to the channel fens or lakes/ponds. The other polygons in the grouped image will be considered as disconnected wetlands, as they donot connect to either the lakes/ponds or the channel fens. After reclass the new image contents of three classes; connected wetlands and water bodies, disconnected wetlands and other land.

e.g. Group 268, 1413, 3505 ...

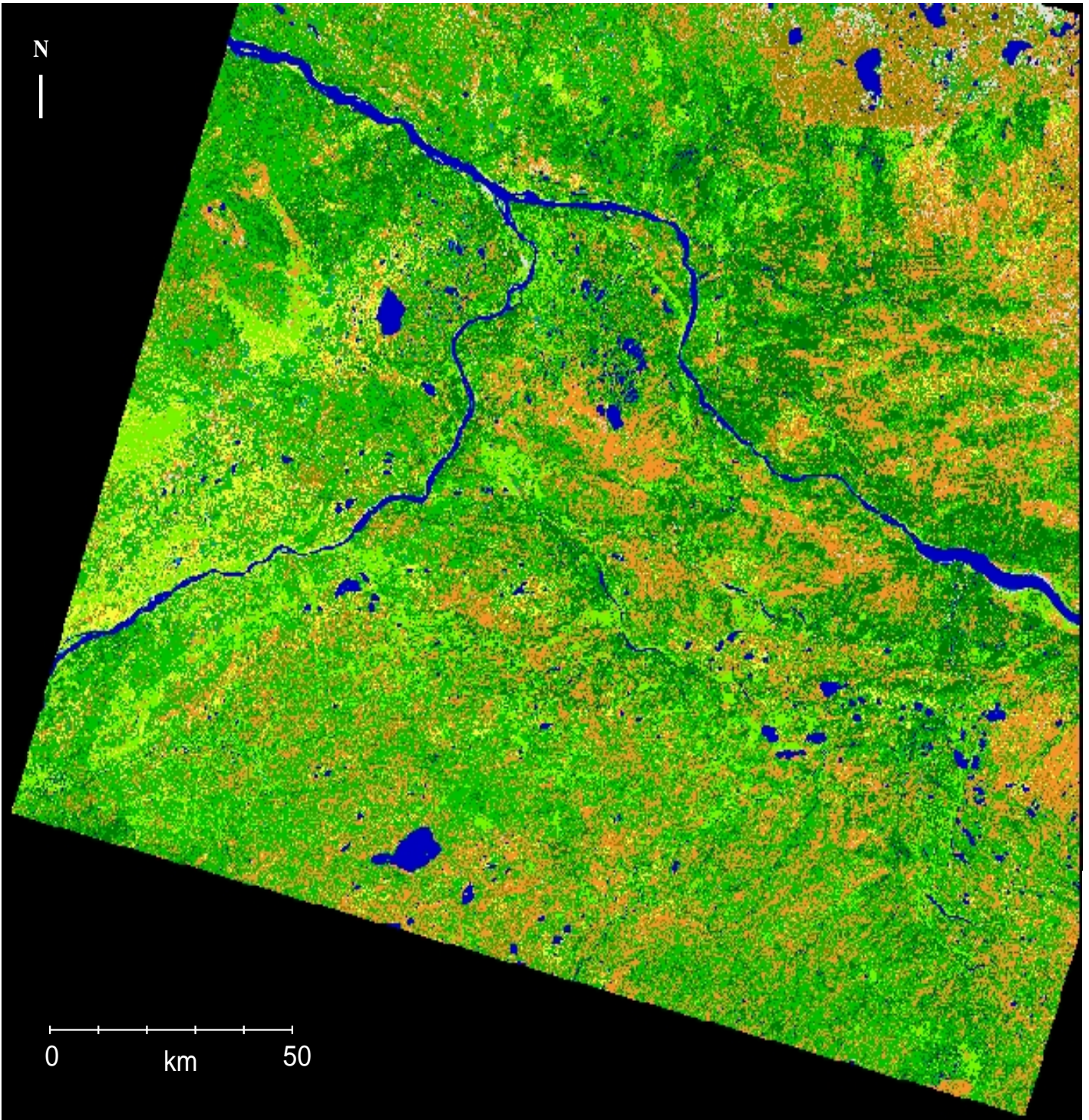
Manually selected groups that connect to lakes or streams





39 Results Of Wetland Grouping In IDRISI:
Connected And Disconnected Wetlands

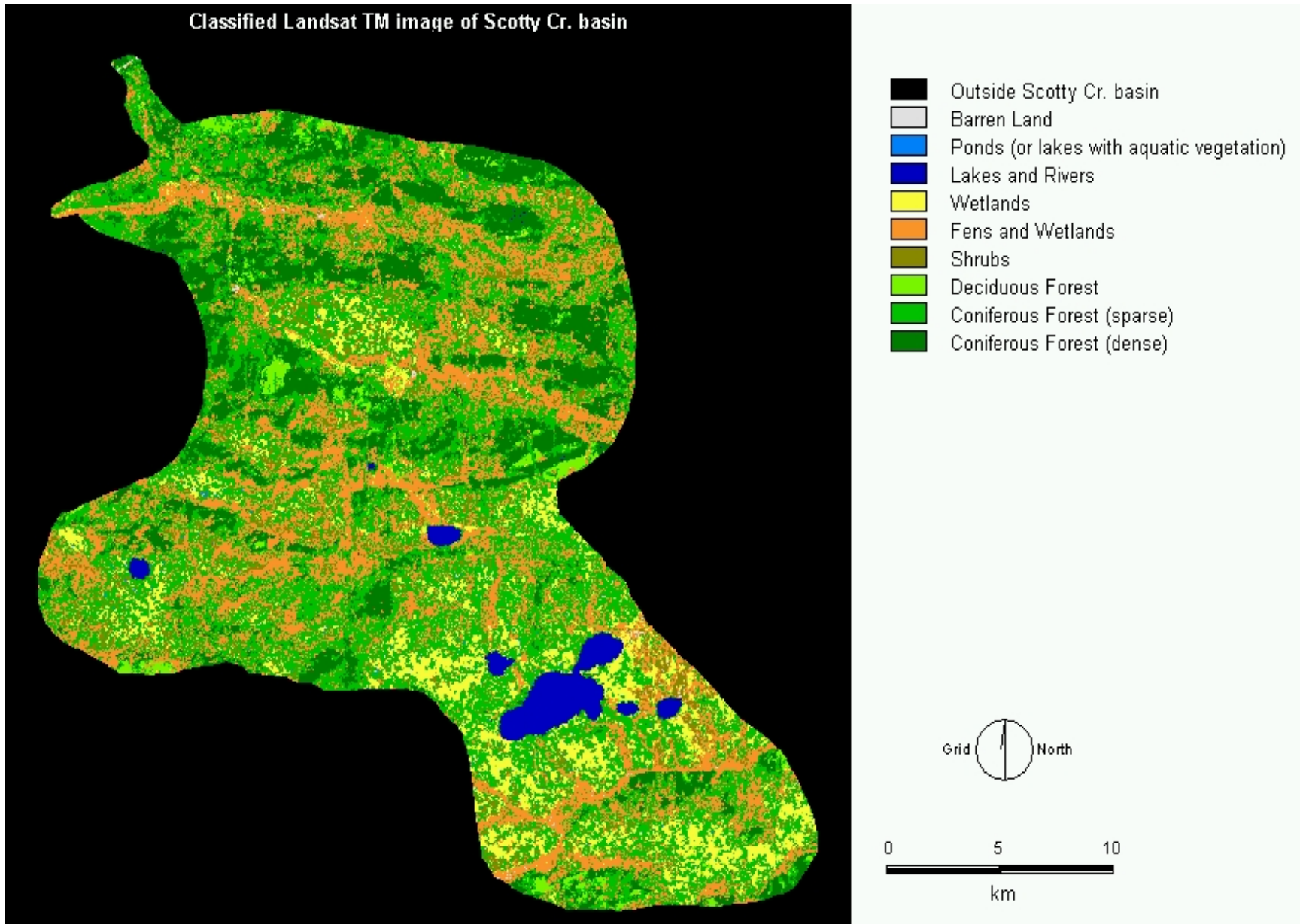


41 THEMATIC MAP OF LOWER LIARD RIVER BASIN BASED ON CLASSIFICATION OF LAND COVER

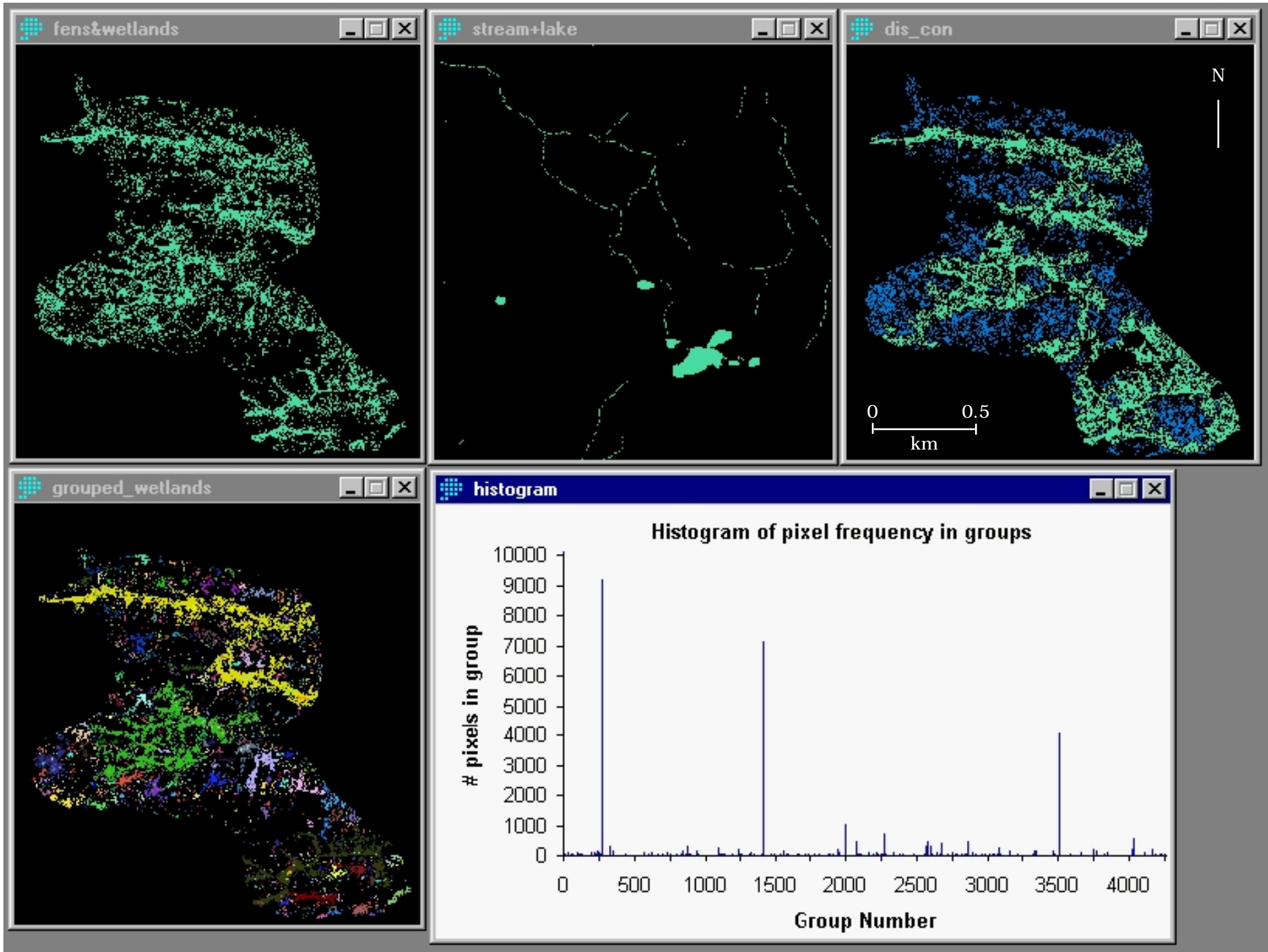


- | | | | |
|--|--|--|----------------------------|
|  | (no data) |  | Fens and Wetlands |
|  | Barren Land |  | Shrubs |
|  | Ponds (or lakes with aquatic vegetation) |  | Deciduous Forest |
|  | Lakes and Rivers |  | Coniferous Forest (sparse) |
|  | Wetlands | | |

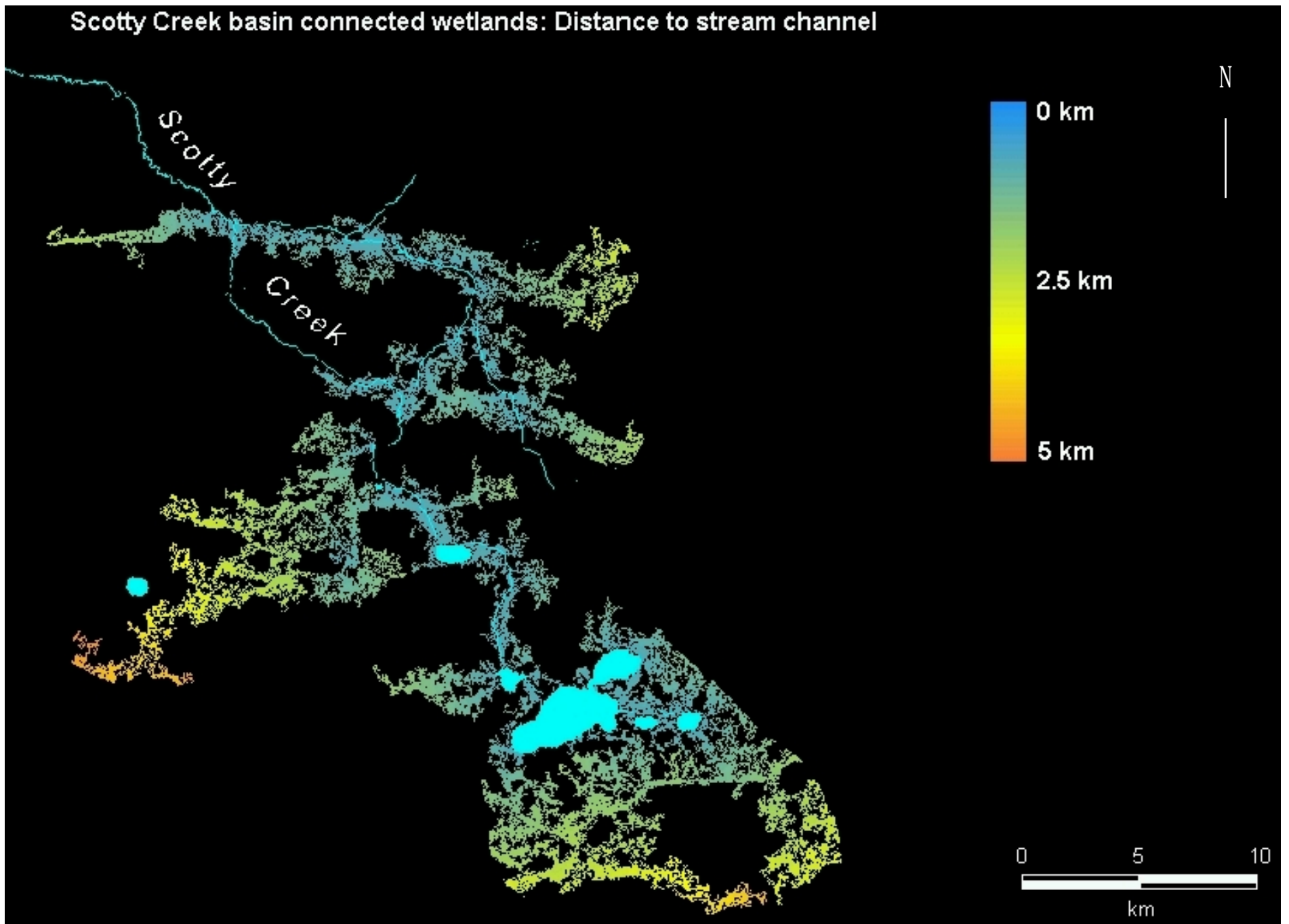
42 Thematic Map of Scotty Creek Basin Based on Classification of Land Cover (Landsat TM image acquired in 1992)



43 MULTIPLE IDRISI DISPLAYS FOR WETLAND GROUPINGS



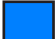



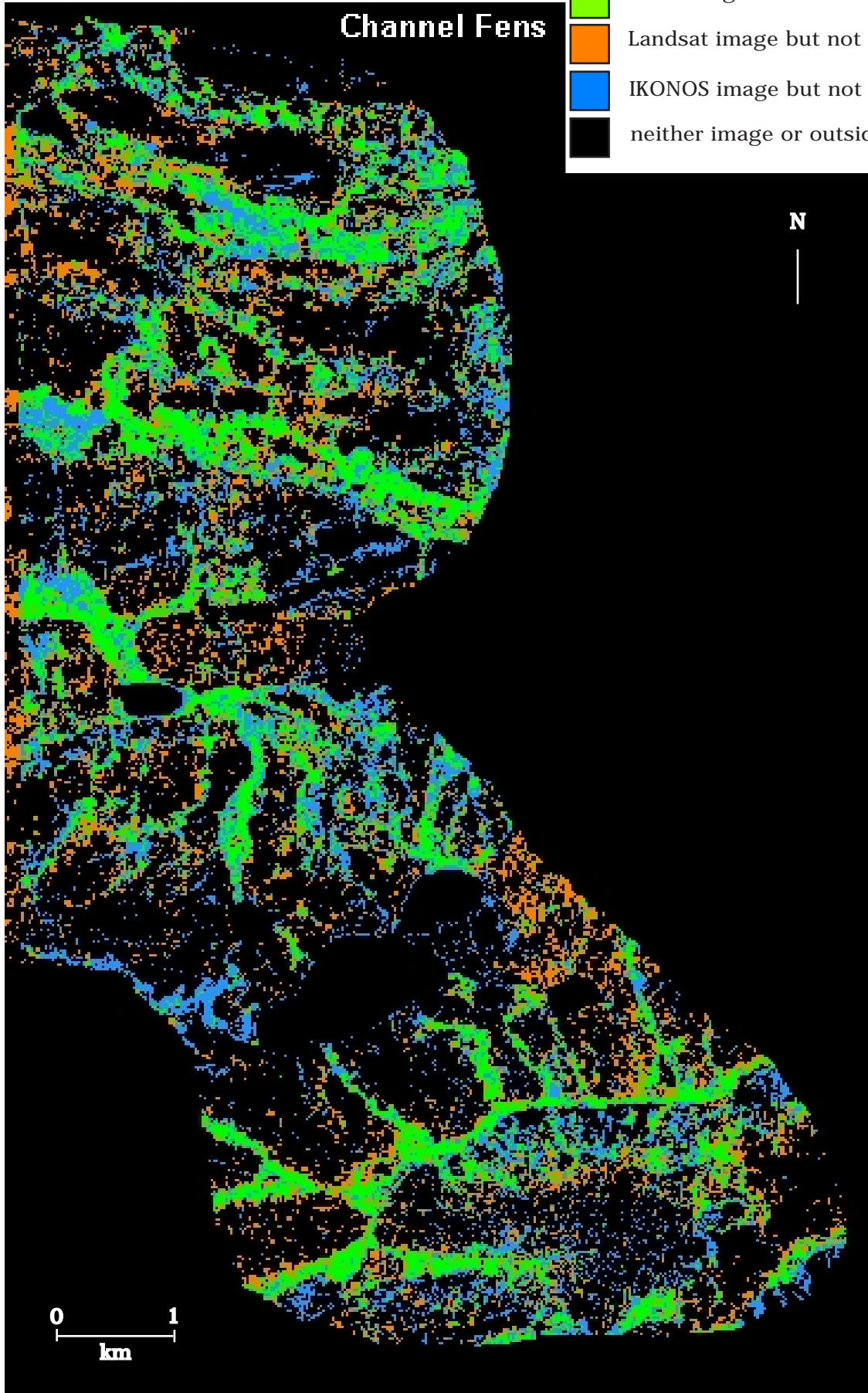
44 DISTANCE ANALYSIS AWAY FROM STREAM CHANNELS AND LAKES FOR SCOTTY CREEK



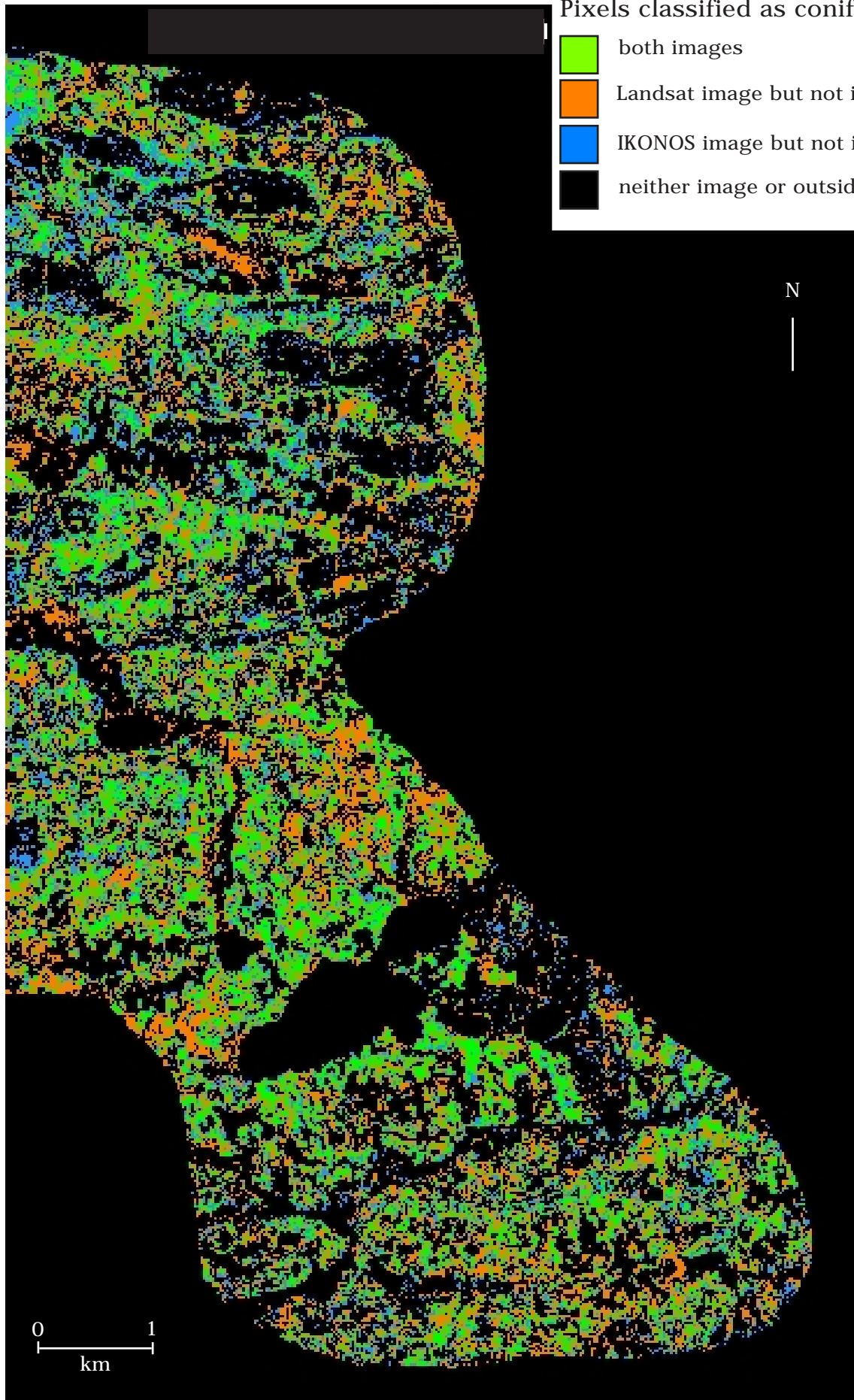
CROSS-CLASSIFICATION OF IKONOS AND LANDSAT IMAGES FOR CHANNEL FENS IN SECTION OF SCOTTY CREEK BASIN

Pixels classified as fens in:





-  both images
-  Landsat image but not in IKONOS image
-  IKONOS image but not in Landsat image
-  neither image or outside data bounds



CROSS-CLASSIFICATION OF IKONOS AND LANDSAT IMAGES FOR CONIFER VEGETATION IN SECTION OF SCOTTY CREEK BASIN



Pixels classified as conifers in:

-  both images
-  Landsat image but not in IKONOS image
-  IKONOS image but not in Landsat image
-  neither image or outside data bounds

N

0 1
km