

Optiguide™

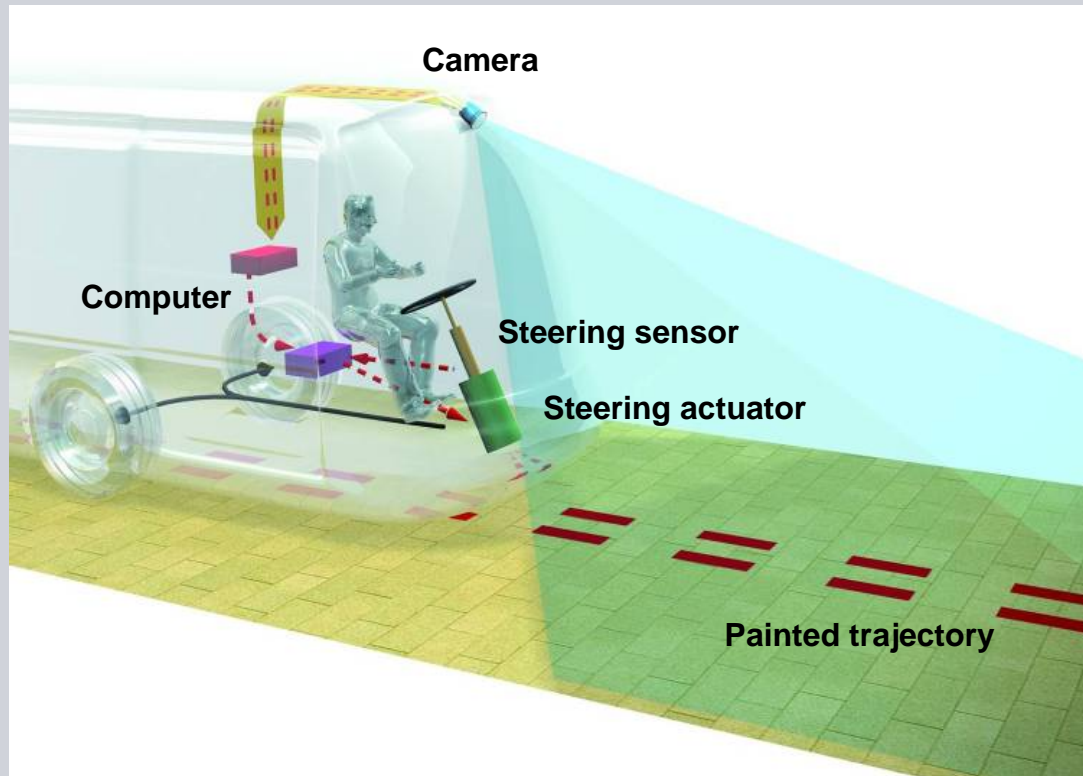
Guiado óptico para Metrobús / Optical guidance for Bus Rapid Transit



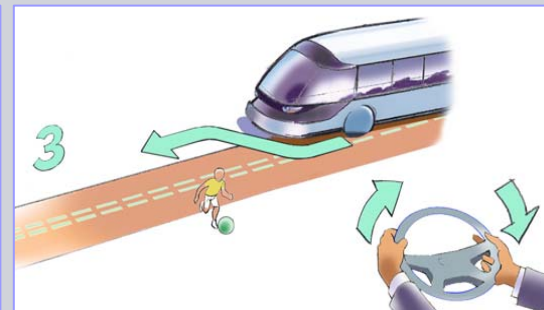
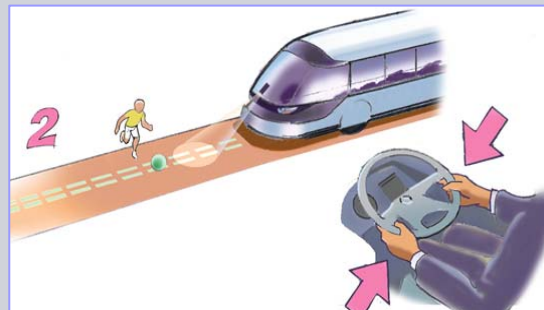
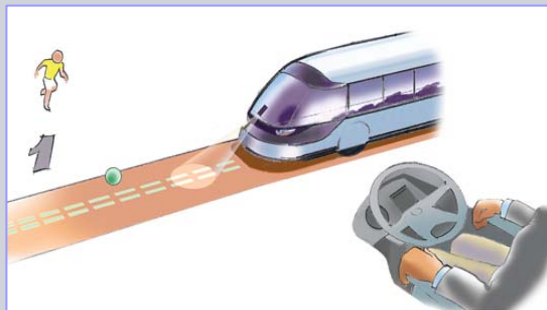
Note: photos from Castellon TVR-CAS

How does Optiguide™ work?

Straightforward system adaptable to any vehicle



- > The on-board camera reads the painted trajectory on the road
- > The on-board guidance computer controls an electric actuator linked to the steering column
- > The vehicle follows the ideal trajectory with very good accuracy
- > Safety : the driver can take over the steering at any moment



What are the benefits of Optiguide™ ?

Optiguide™ upgrades the level of service of your Metrobus system (BRT)

- > **Accessibility** for all thanks to level boarding and precise docking
- > **Safety & Availability** (no collision between vehicle and platform, no need for ramp for wheelchairs)
- > Dynamic **comfort** in curve for a smoother ride
- > Better **working conditions** for the drivers, higher availability of the drivers to watch the environment
- > Contribution to the increase of **average speed** (dwelling time)
- > Better respect of the **dedicated lane** by car users
- > **Image** of the transportation system



Optical guidance for docking + well equipped station = accessibility for everybody

What is Optiguide™ track record?

A proven solution, chosen by different cities & Metrobus systems

ROUEN TEOR (France)

- > 3 “TEOR” lines, 30 km, 52 stations, 66 18-m Agora & Citelis diesel vehicles; In operation since 2001, accessibility award in 2005, extension in 2007

CASTELLON TVRCAS (Spain)

- > 3 km, 5 stations, 3 12-m Civis trolleybuses, start of operation in May 2008

BOLOGNA (Italy)

- > 3 lines, 20 km, 50 stations, 49 18-m Civis trolleybuses, start of operation in 2010 (+ 3 km and 2 vehicles in 2008)

NÎMES (France)

- > 4 km, 10 stations, 8 18-m Crealis diesel EEV buses, start of operation in 2010

LYON C1 (France)

- > Experimentation phase, retrofit of 2 trolleybuses and 3 platforms on existing BRT line C1, smart kneeling system

