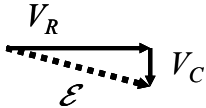


Super-high frequency case



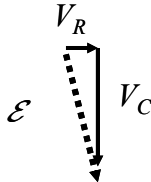
For the resistor, which is is true?

- a) $V_{R,\max} \ll \mathcal{E}$ **b) $V_{R,\max} \approx \mathcal{E}$** c) $V_{R,\max} \gg \mathcal{E}$

For the capacitor, which is is true?

- a) $V_{C,\max} \ll \mathcal{E}$** b) $V_{C,\max} \approx \mathcal{E}$ c) $V_{C,\max} \gg \mathcal{E}$

Super-low frequency case



For the resistor, which is is true?

- a) $V_{R,\max} \ll \mathcal{E}$** b) $V_{R,\max} \approx \mathcal{E}$ c) $V_{R,\max} \gg \mathcal{E}$

For the capacitor, which is is true?

- a) $V_{C,\max} \ll \mathcal{E}$ **b) $V_{C,\max} \approx \mathcal{E}$** c) $V_{C,\max} \gg \mathcal{E}$