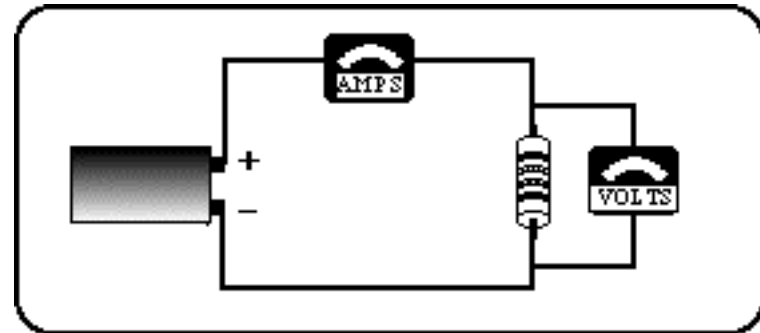


Physics 141

Battery Test

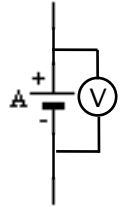
Today's Concepts:

- Propagation of Errors
- Ohm's Law or Not



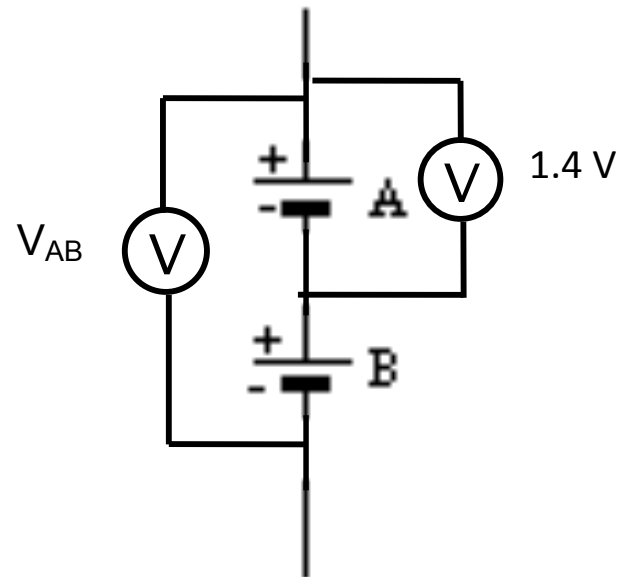
Battery Test 1

Assume that a single cell gives a reading of 1.4 V.
Cells A and B are the same.



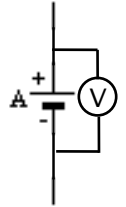
What would be the expected value V_{AB} ?

- A) 0.7 V
- B) 1.4 V
- C) 2.8 V
- D) Not sure



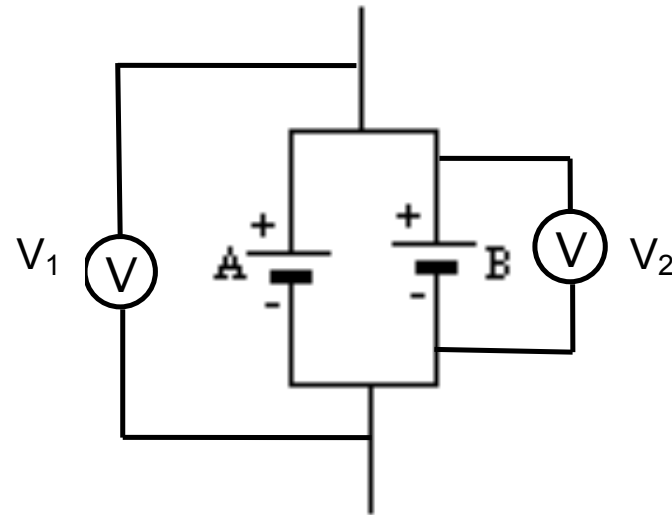
Battery Test 2

Assume that a single cell gives a reading of 1.4 V.
Cells A and B are the same.



What would be the expected values V_1 , V_2 ?

- A) 0.7 V, 1.4 V
- B) 0.7 V, 0.7 V
- C) 2.8 V, 2.8 V
- D) 2.8 V, 1.4 V
- E) 1.4 V, 1.4 V



Multimeter Mnemonic

3 common measurements with a multimeter are

- Voltage (Potential Difference)
- Current
- Resistance

