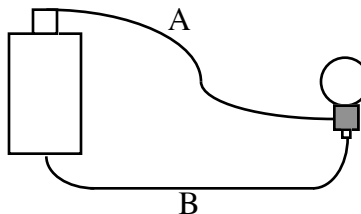


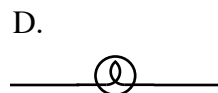
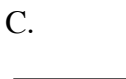
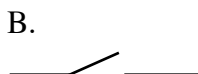
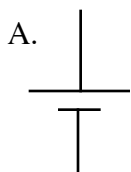
Name \_\_\_\_\_ Date \_\_\_\_\_

## HOMEWORK FOR UNIT 22 #1 BATTERIES, BULBS AND CURRENT

1. For the circuit on the right, indicate whether the statements below are TRUE or FALSE. If a statement is false, give a correct statement.



- A. The current flows from the battery, through wire A, through the bulb, and then back to the battery through wire B.
- B. Since current is used up by the bulb, the current in wire B is smaller than the current in wire A.
- C. The current flows toward the bulb in both wires A and B.
- D. If wire B is disconnected, but wire A is left connected, the bulb will still light, but if wire A is disconnected and wire B is left connected, the bulb will not light.
- E. A current probe will have the same readings if connected to read the current in wire A or wire B.
2. What circuit element is represented by each of the following symbols?

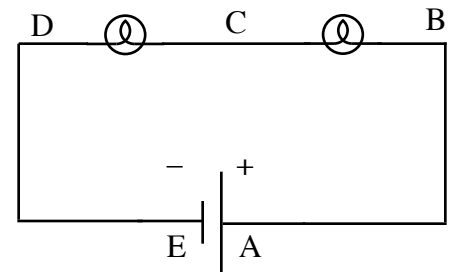


3. Draw a circuit diagram using the symbols in question 2 for three christmas tree bulbs connected to a battery with a switch so that when one bulb is unscrewed, the other two still light.



4. Re-draw below the circuit in question 1 with one current probe hooked up to measure the current in wire A and a voltage probe hooked up to measure the voltage across the light bulb. Also include a switch in the circuit to turn the bulb on and off. Use correct symbols for all circuit elements.

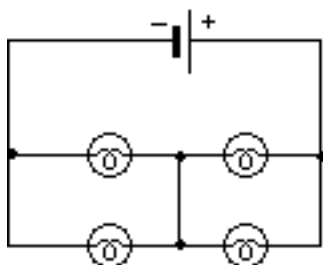
5. A. For the Circuit at right which point A, B, C, D or E is the voltage the lowest? Explain.



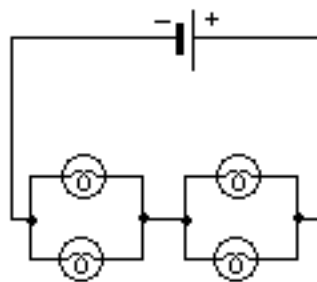
- B. At which point is the potential energy of a positive charge the highest? Explain.

- C. At which point is the current the largest? Explain.

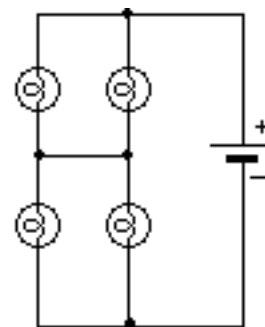
6. Which of the three circuits shown below, if any, are electrically identical? Which are different? Explain your answers.



#1



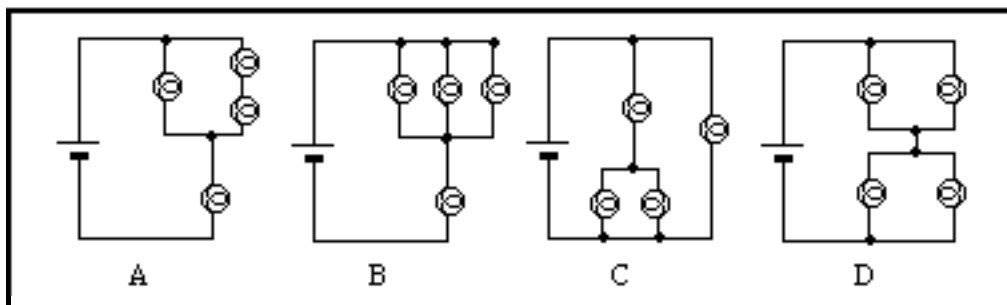
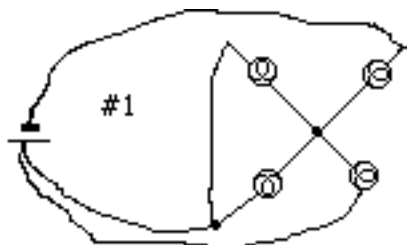
#2



#3



7. Identify which of the nice, neat circuit diagrams (A,B,C or D) corresponds to messy circuit diagram #1. Explain the reasons for your answer.



8. Which neat circuit diagram corresponds to messy circuit diagram #2? Explain the reasons for your answer.