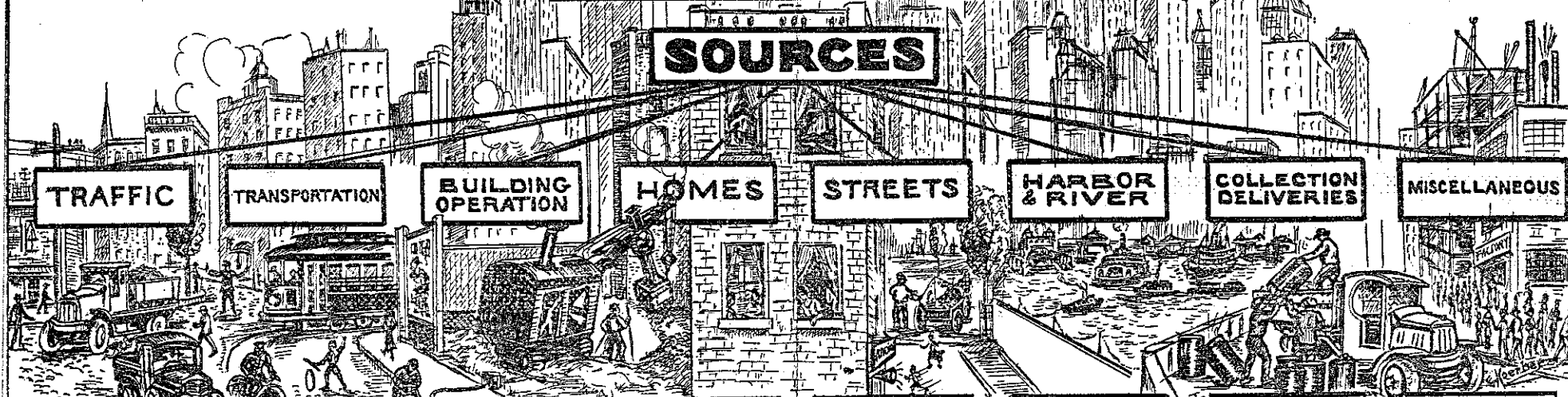


*By A. Schick. 26.  
 1934*



# CITY NOISE

## SOURCES



### TRAFFIC

### TRANSPORTATION

### BUILDING OPERATION

### HOMES

### STREETS

### HARBOR & RIVER

### COLLECTION DELIVERIES

### MISCELLANEOUS

Automobiles  
 Trucks  
 Buses  
 Motorcycles  
 Horns  
 Brakes  
 Cut-outs  
 Gears  
 Defective--  
 Mufflers  
 Exhaust  
 Whistles  
 Rattling--  
 Parts  
 Rattling--  
 Loads  
 Sirens  
 Bells  
 Doorman's  
 -Whistles

Trolley Cars  
 Trains ---  
 Subway  
 Elevated  
 Railroads  
 Turnstiles  
 Brakes  
 Rattling--  
 Wheels  
 Bodies  
 Defective--  
 Switches  
 Joints  
 Wheel Impact  
 Whistles  
 Bells  
 Steam & Other  
 - Exhausts  
 Shifting --  
 Cars

Pneumatic  
 Drills &  
 Riveters  
 Exhausts from  
 Steam &  
 Gasoline-  
 Hoists -  
 Shovels -  
 Pile --  
 Drivers  
 Blasting  
 Unloading  
 Loading  
 Shouting  
 Compressors

Loud --  
 Speakers  
 Pianos  
 Phonographs  
 Musical --  
 Instruments  
 Late  
 Parties  
 Barking Dogs

Radio &  
 Music --  
 - Stores  
 Peddlers  
 Loiterers  
 Garage &  
 - Taxi -  
 Stands

Whistles  
 Bells  
 Sirens  
 Motor --  
 - Exhausts  
 Horns

Ash  
 Garbage  
 Milk  
 Papers  
 Food  
 Mail  
 Express

Airplanes  
 Factories  
 Restaurants  
 Amusement  
 - Halls



Courtesy of

**TABULATION OF NOISE COMPLAINTS—March 1, 1930**

SOURCE	NUMBER	PERCENT
Trucks—Motor .....	1,125	10.16
Automobile Horns .....	1,087	9.81
Radios—Homes .....	774	7.00
Elevated Trains .....	731	6.62
Radios—Street & Stores .....	593	5.36
Automobile Brakes .....	583	5.27
Ash & Garbage Collections .....	572	5.17
Street Cars .....	570	5.16
Automobile Cut-Outs .....	504	4.55
Fire Department Sirens and Trucks .....	455	4.12
Noisy Parties and Entertainments .....	453	4.10
Milk and Ice Deliveries .....	451	4.07
Riveting .....	373	3.37
Subway Turnstiles .....	317	2.86
Buses .....	271	2.45
Trucks—Horse Drawn .....	268	2.41
Locomotive Whistles and Bells .....	238	2.15
Pneumatic Drills—Excavations .....	233	2.11
Tug and Steamship Whistles .....	223	2.01
Pneumatic Drills—Streets .....	213	1.93
Newsboys and Peddlers .....	212	1.91
Subway Trains .....	183	1.65
Dogs and Cats .....	140	1.26
Traffic Whistles .....	137	1.24
Factories .....	117	1.06
Airplanes .....	113	1.02
Motor Boats .....	66	0.59
Motorcycles .....	41	0.37
Restaurant Dishwashing .....	25	0.22
	<u>11,068</u>	<u>100.00</u>

**CLASSIFICATION**

SOURCE	NUMBER	PERCENT
TRAFFIC (Trucks, Automobile Horns, Cut-Outs, Brakes, Buses, Traffic Whistles, Motorcycles)	4,016	36.28
TRANSPORTATION (Elevated, Street Cars, Subway)	1,801	16.29
RADIOS (Homes, Streets & Stores)	1,367	12.34
COLLECTIONS & DELIVERIES (Ash, Garbage, Milk, Ice)	1,023	9.25
WHISTLES & BELLS (Fire Dept., Locomotives & Tugs & Steamships)	916	8.28
CONSTRUCTION (Riveting, Pneumatic Drills)	819	7.40
VOCAL, ETC. (Newsboys, Peddlers, Dogs, Cats, Noisy Parties)	805	7.27
OTHERS	321	2.89
	<u>11,068</u>	<u>100.00</u>



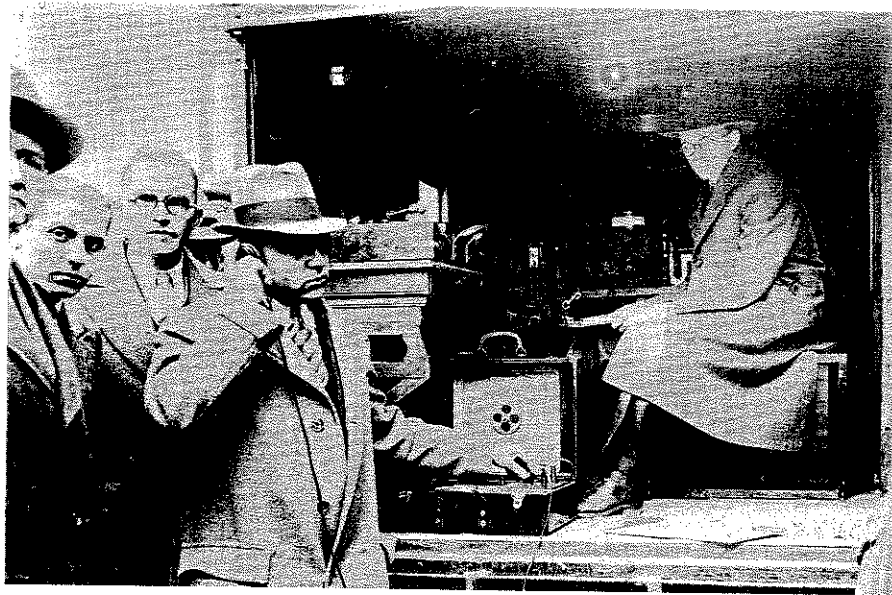
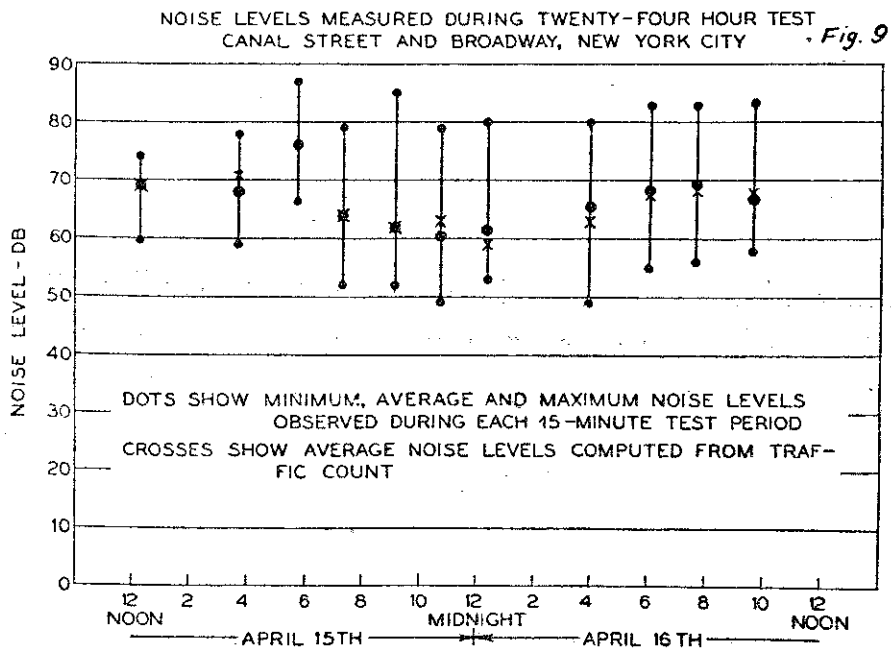
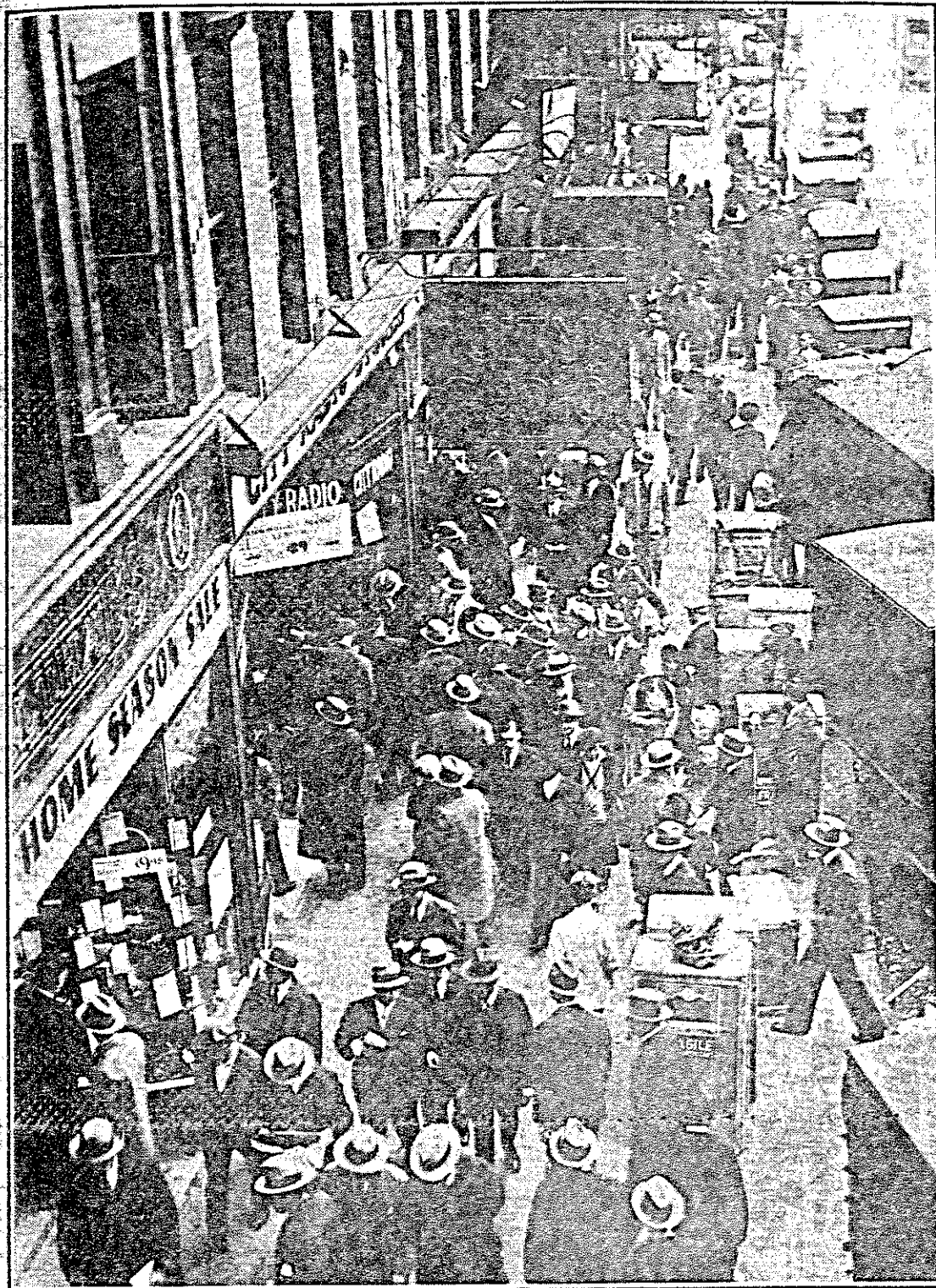


TABLE 4

Location	Average Noise Level in Decibels on Different Days\			
Herald Square .....	73.2	73.4		
Fifth Ave. & 42nd St. ....	67.1	67.3	68.0	
Bowery & Canal St. ....	74.2	74.0	73.6	
Broadway & Canal St. ....	74.5	69.4	68.7	74.2
Broadway & Houston St. ....	72.7	70.6		





*Three streets and many isolated store fronts poured forth torrents of sound until the city ordinance sponsored by the Noise Abatement Commission checked this abuse of loudspeakers*

Your committee finds that the harmful effect of noises is shown in many ways:

1. Hearing is apt to be impaired in those exposed to constant loud noises.
2. Noise interferes seriously with efficiency of the worker. It lessens attention and makes concentration upon any set task difficult.
3. In the attempt to overcome the effect of noise, great strain is put upon the nervous system, leading to neurasthenic and psychasthenic states. Because of the incessant noise of the city, quiet needed for recuperation has to be sought in the country.
4. Noise interferes seriously with sleep, even if a few become tolerant. All noises, on streets and within doors, should be minimized during the sleeping hours (11 P.M. to 7 A.M.). Day noises interfere with the innumerable convalescents in hospitals and in private homes throughout the city, and with those like night nurses, typesetters, and others who are compelled to get their sleep during the day.
5. It is a well established fact that the normal development of infants and young children is seriously interfered with by constant loud noises.





New York the Noisiest City on Earth



Tuesday Will See the Annual Climax of the Perpetual Din and Racket Which Seem to Be Inseparable from Its Strenuous Life—Effect on the Nervous Systems of New Yorkers—Is There Any Relief Possible?

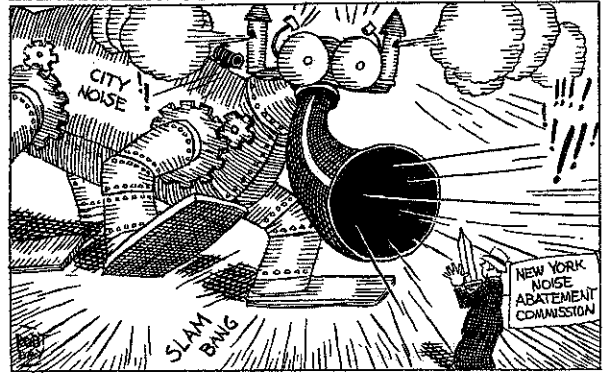


SMALL BODIES OF ENERGY ENTIRELY SURROUNDED BY NOISE

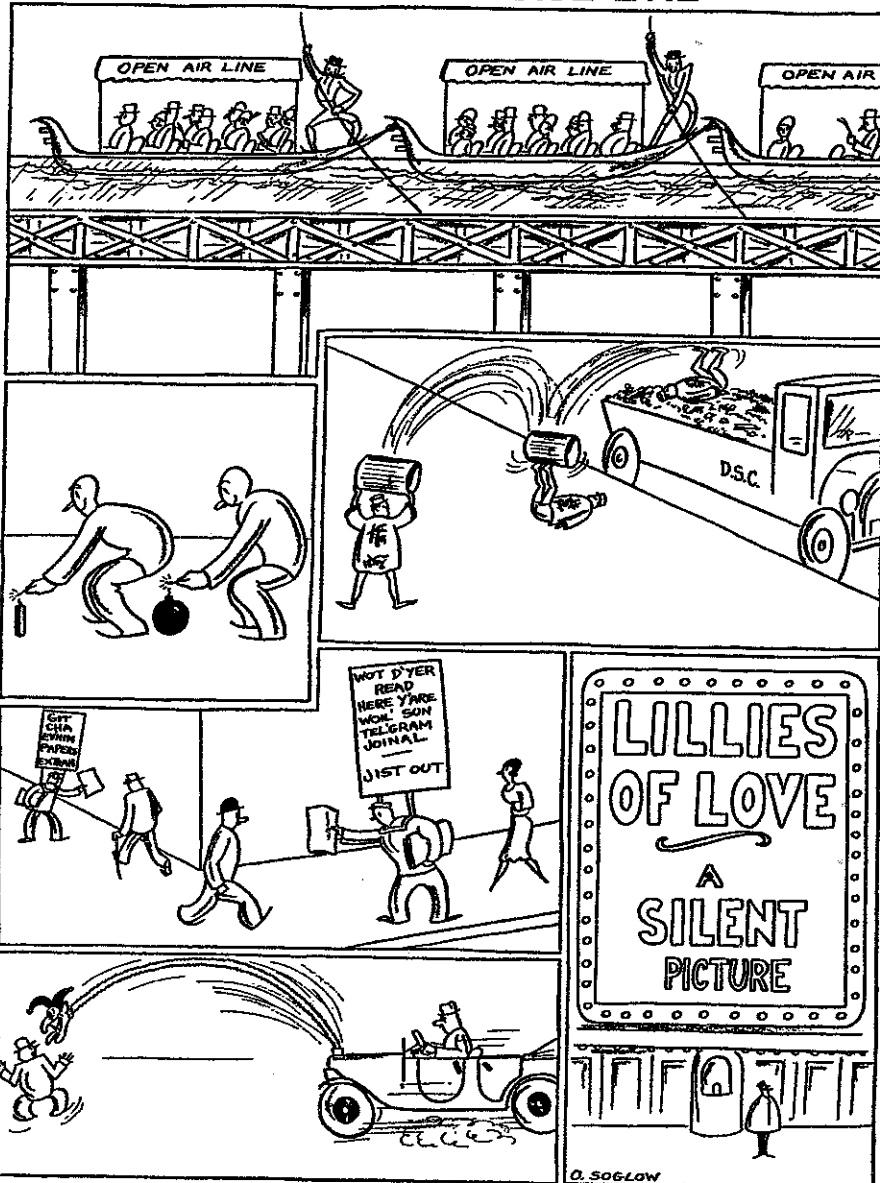


ALSO PLAZAS OF ALL STREETS AND COLLEGES

WHAT AN EASY TIME ST. GEORGE HAD!



ABATING THE NOISE EVIL



“Abating the Noise Evil,” cartoon by Otto Soglow for the *New Yorker* (5 July 1930). Soglow’s whimsical solutions to the problem of noise suggest that the less fanciful efforts of the Noise Abatement Commission were well known to readers of the magazine. © The New Yorker Collection, 1930, Otto Soglow, from cartoon-bank.com. All Rights Reserved.