

JOHN D. ALDERETE

Department of Linguistics
Simon Fraser University
Burnaby, BC, V5A 1S6
Canada

Tel: 604-215-3621
Voice: 408-634-2415
Email: alderete@sfu.ca
Web: www.sfu.ca/~alderete

Current position

Associate professor, Linguistics/Cognitive Science, Simon Fraser University (2009-)

Education

- 1999 Ph.D., University of Massachusetts, Amherst. Major concentration in phonology and morphology; Dissertation chairperson: Prof. John J. McCarthy
- 1993 M.A., University of California, Santa Cruz. Major concentration in phonology; Thesis chairperson: Prof. Junko Itô
- 1992 B.A. with High Honors, University of California, Santa Cruz. Major in Language Studies

Areas

Phonology, phonetics, morphology, cognitive science, computational psychology, computational linguistics, psycholinguistics, linguistic fieldwork, linguistic documentation

Interests

Theoretical phonology, theoretical morphology, Optimality Theory; computational learning algorithms, child phonology, neural networks, connectionism, levels of explanation; Austronesian, Samoan, Hawaiian, Athabaskan, Tahltan

Previous academic positions

- 2004-2009 Assistant professor, Simon Fraser University, Linguistics/Cognitive Science
- 2003-2004 Assistant professor, University of South Carolina, Linguistics
- 2001-2003 Postdoctoral associate and visiting assistant professor, Rutgers University, Linguistics, Rutgers Center for Cognitive Science
- 2000-2001 Postdoctoral fellow and visiting assistant professor, Swarthmore College, Linguistics
- 1998-2000 Postdoctoral fellow and sessional lecturer, University of British Columbia, Linguistics

Honors, awards, grants (selected)

- 2006-2009 Social Sciences and Humanities Research Council of Canada grant 410-2006-1006. Mechanisms of consonant assimilation (collaborator with PI Alexei Kochetov, 75.4K).
- 2005-2008 Social Sciences and Humanities Research Council of Canada grant 410-2005-1175 (PI, 100.2K). Process-based morphology in Optimality Theory.
- 2004-2005 Simon Fraser University Endowed Research Fellowship (competitive award to four SFU faculty, 5K)
- 2001-2002 National Science Foundation grant BCS-0104606 (PI, 23.9K). Word domains in Athabaskan.
- 1999-2000 National Science Foundation grant SES-9904360 (PI, 83.8K). Morphological and prosodic structures in Tahltan.

Professional service (selected)

- 2003-2013 Editorial board of *Phonology*, Cambridge University Press
- 2005-2008 Member of language documentation and grant funding subcommittees for the Dahdzege Language Society, Tahltan Nation
- 2003-2004 Chair of organizing committee for 13th meeting of Formal Approaches to Slavic Linguistics, University of South Carolina
- 2003 Linguistic consultant to UBC's Museum of Anthropology and Canadian Museum of Civilization, supporting collaborations with museum curators and the Tahltan Nation

Publications

Book

2001. John Alderete. Morphologically governed accent in Optimality Theory. Routledge publishing series, Outstanding dissertations in linguistics. New York: Routledge.

Journal articles

2011. Kochetov, Alexei and John Alderete. Scales and patterns of expressive palatalization: Experimental evidence from Japanese. To appear in *Canadian Journal of Linguistics*.
2009. Alderete, John and Alexei Kochetov. Japanese mimetic palatalization: implications for conflicting directionality. *Phonology* 26: 369-388.
2008. Alderete, John. Using learnability as a filter on factorial typology: A new approach to Anderson and Browne's generalization. *Lingua* 118: 1177-1220.
2008. Alderete, John and Thomas McIlwraith. An annotated bibliography of Tahltan language materials. *Northwest Journal of Linguistics* 2: 1-26.
2003. Alderete, John. Structural disparities in Navajo word domains: A case for lex-cat faithfulness. *The Linguistic Review* 20: 111-158.
2001. Alderete, John. Root-controlled accent in Cupeño. *Natural Language and Linguistic Theory* 19: 455-501.
2001. Alderete, John. Dominance effects as transderivational anti-faithfulness. *Phonology* 18: 201-253.
1999. Alderete, John, Jill Beckman, Laura Benua, Amalia Gnanadesikan, John J. McCarthy, and Suzanne Urbanczyk. Reduplication with fixed segmentism. *Linguistic Inquiry* 30: 327-364.

Book chapters

2010. Alderete, John. Exploring recursivity, stringency, and gradience in the Pama-Nyungan stress continuum. In Steve Parker (ed.), *Phonological argumentation. Essays on evidence and motivation*, pp. 181-202. London: Equinox Publishing.
2007. Alderete, John and Stefan Frisch. Dissimilation in grammar and the lexicon. In Paul de Lacy, (ed.), *The Cambridge Handbook of Phonology*, pp. 379-398. Cambridge: Cambridge University Press.
2005. Alderete, John. On tone and length in Tahltan (Northern Athabaskan). In Sharon Hargus and Keren Rice (eds.), *Athabaskan prosody*, pp. 185-207. Amsterdam: John Benjamins.
2005. Alderete, John and Tanya Bob. A corpus-based approach to Tahltan stress. In Sharon Hargus and Keren Rice (eds.), *Athabaskan prosody*, pp. 369-391. Amsterdam: John Benjamins.
2003. Alderete, John. Phonological processes: Dissimilation. In William Frawley (ed.), *International Encyclopedia of Linguistics*, 2nd Edition, pp. 323-324. Oxford: Oxford University Press.
1999. Alderete, John. Head dependence in stress-epenthesis interaction. In Ben Hermans & Marc van Oostendorp (eds.), *The derivational residue in phonological Optimality Theory*, pp. 29-50. Amsterdam: John Benjamins.

Conference proceedings

2008. Kim, Lan and John Alderete. Why [h] and aspirated consonants are different in Korean. In *Proceedings of first International Conference of East Asian Linguistics, Toronto Working Papers in Linguistics* 28, pp. 123-136. Toronto: University of Toronto Department of Linguistics.
2005. Alderete, John, Adrian Brasoveanu, Nazarré Merchant, Alan Prince, and Bruce Tesar. Contrast analysis aids the learning of phonological underlying forms. In John Alderete, Alexei Kochetov, and Chung-hye Han (eds.), *Proceedings of the 24th West Coast Conference on Formal Linguistics*, pp. 34-42. Somerville, MA: Cascadilla Proceedings Project.

2003. Crosswhite, Katherine, John Alderete, Tim Beasley, and Vita Markman. Morphological effects on default stress placement in novel Russian words. In Gina Garding and Mimu Tsujimura (eds.), *Proceedings of the 22nd West Coast Conference on Formal Linguistics*, pp. 151-164. Somerville, MA: Cascadilla Press.
2003. Tesar, Bruce, John Alderete, Graham Horwood, Koichi Nishitani, Nazarré Merchant, Alan Prince. Surgery in language learning. In Gina Garding and Mimu Tsujimura (eds.), *Proceedings of the 22nd West Coast Conference on Formal Linguistics 22*, pp. 477-490. Somerville, MA: Cascadilla Press.
1998. Alderete, John. Canonical types and noun phrase configuration in Fijian. In Matt Pearson (ed.), *UCLA Occasional Papers in Linguistics 21, Proceedings of the third and fourth meetings of the Austronesian Formal Linguistic Association (AFLA III-IV)*, pp. 19-44. Los Angeles, CA: UCLA Department of Linguistics.
1997. Alderete, John. Dissimilation as local conjunction. In Kiyomi Kusumoto (ed.), *Proceedings of North East Linguistic Society 27*, pp. 17-31. Amherst: Graduate Linguistic Student Association. [Reprinted in John McCarthy (ed.), *Optimality Theory in phonology: Selected readings*, pp. 394-406. Oxford: Blackwell]

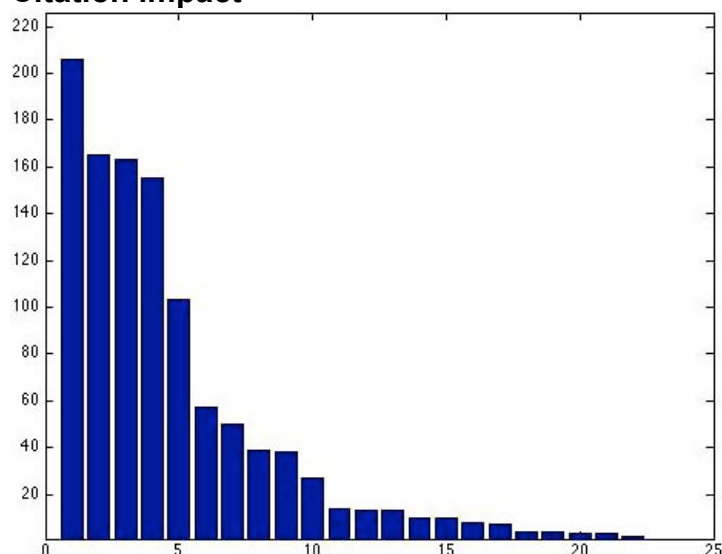
Technical reports, working papers, and submitted manuscripts

2011. Alderete, John, Paul Tupper, and Stefan Frisch. Phonotactic learning without a priori constraints: A connectionist analysis of Arabic cooccurrence restrictions. Revised and reubmitted.
2002. Alderete, John and Bruce Tesar. 2002. Learning covert phonological interaction: An analysis of the problem posed by the interaction of stress and epenthesis. Report no. RuCCS-TR-72. Piscataway, NJ: Rutgers Center for Cognitive Science.
2000. Alderete, John. Prosodic faithfulness in Cupeño. In Elena Benedicto (ed.), *University of Massachusetts Occasional Papers 20, Indigenous languages*, pp. 1-27. Amherst: Graduate Linguistic Student Association.
2000. Alderete, John. The prosodic morphology of iteratives in Jamaican Creole. In Elena Benedicto (ed.), *University of Massachusetts Occasional Papers 20, Indigenous languages*, pp. 29-50. Amherst: Graduate Linguistic Student Association. [Revised 1993 Masters paper from the University of California, Santa Cruz]
1995. Alderete, John. Winnebago Accent and Dorsey's Law. In Jill Beckman, Laura Walsh-Dickey, & Suzanne Urbanczyk (eds.), *University of Massachusetts Occasional Papers 18, Papers in Optimality Theory*, pp. 21-51. Amherst: Graduate Linguistic Student Association.
1995. Alderete, John. Faithfulness to prosodic heads. Rutgers Optimality Archive, Report No. 94.

Linguistic documentation archived in public institutions

2008. Alderete, John and Judy Thompson. James Teit collection. Canadian Museum of Civilization Archives. [77 page document that provides linguistic analysis of the Tahltan names resulting from a census conducted by James Teit; over 171 entries with transcriptions and linguistic annotations]
2007. Alderete, John. Tahltan Language and Culture CD Series. 23 CDs and associated manuscripts of linguistic questionnaire data, Tahltan folklore, and ethnographic accounts; archived by researcher at Simon Fraser University, elder participants, and band governments.
2007. Alderete, John and Tad McIlwraith. A catalogue of the Tahltan Stories of Rose Dennis. [46 page document containing entries for 21 bilingual ethnographic and folkloric texts; entries include both linguistic and cultural notes, an English synopsis, and technical and legal information about the recording]
2003. Alderete, John. Bilingual audio presentation of traditional Tahltan creation narrative for Museum of Anthropology exhibit (UBC, Vancouver, British Columbia), *Mehodih: Well-known traditions of the Tahltan People*.

Citation impact



h-index: 13, **g-index:** 34, based on 1218 citations from Google Scholar (Nov. 2011).

Top-cited publications:

210 citations: Alderete 2001

‘Morphologically governed accent in Optimality Theory’

165 citations: Alderete 1997 ‘Dissimilation as local conjunction’

163 citations: Alderete 1995 ‘Faithfulness to prosodic heads’

155 citations: Alderete et al. 1999 ‘Reduplication with fixed segmentism’

103 citations: Alderete 2001 ‘Dominance effects as transderivational anti-faithfulness’

Advising

Primary thesis advisor

2011-2013. Kayleigh MacMillan, M.A. thesis (SFU), ‘Phonological development of children with autism: developmental delay or autism-specific deficit?’.

2011-2013. Amber Blenkiron. M.A. thesis (SFU), Morphology-phonology interaction in Samoan.

2007-2009. Tzu-Ying Vivian Lee, M.A. thesis (SFU), ‘Juncture phrasing thresholds: A constraint-based approach to speech rate effects on Mandarin tone sandhi’.

2006-2008. Loredana Andreea Kosa, MA thesis (SFU), ‘An argument for process-based morphology: Subtractive morphology in Tohono O’odham’. [PhD student, Toronto]

Member of advising committee

2009. Michael Woods, M.A. thesis (SFU Psychology), ‘Categorization of partially occluded visual stimuli: Bridging the gap between completion and classification’. [PhD student, Kent]

2001. Oluseye Adesola, qualifying paper (Rutgers), ‘Problems in Yoruba lexical stratification’.

1998-1999. Tanya Bob, M.A. thesis (UBC), ‘Tahltan laryngeal phenomena’.

1998-1999. Ikuyo Kaneko, M.A. thesis (UBC), ‘The pitch accent system of Blackfoot’.

Undergraduate project advising

Mark Bradshaw (2010), Michael Fry (2010), Angela Cooper (2006; PhD student, Northwestern), Henrike Blumenfeld (2001; Assistant professor, SDSU), Kyra Jucovy (2001), Oscar Dennis (1999).

Teaching (UMass, UBC, Swarthmore, Rutgers, USC, SFU)

Undergraduate

Morphology (5 times at SFU)

Advanced phonology (7 times at SFU, UBC)

Introduction to phonology (2 times at SFU, UBC)

Introduction to phonetics and phonology (3 times at UBC, Swarthmore, SFU)

Phonetics practicum (once at UBC)

Theme-based seminar (twice at SFU, UBC)

Introduction to linguistics (7 times at UMass, SFU, USC, Rutgers)

Field methods (once at Rutgers)

Foundations in cognitive science (twice at SFU)

Graduate

Graduate-level phonology (5 times at SFU, USC)

Theme-based seminar (twice at Rutgers, SFU)

History of English (once at USC)