



# **FALSE CREEK AND ROBSON SQUARE**

VANCOUVER



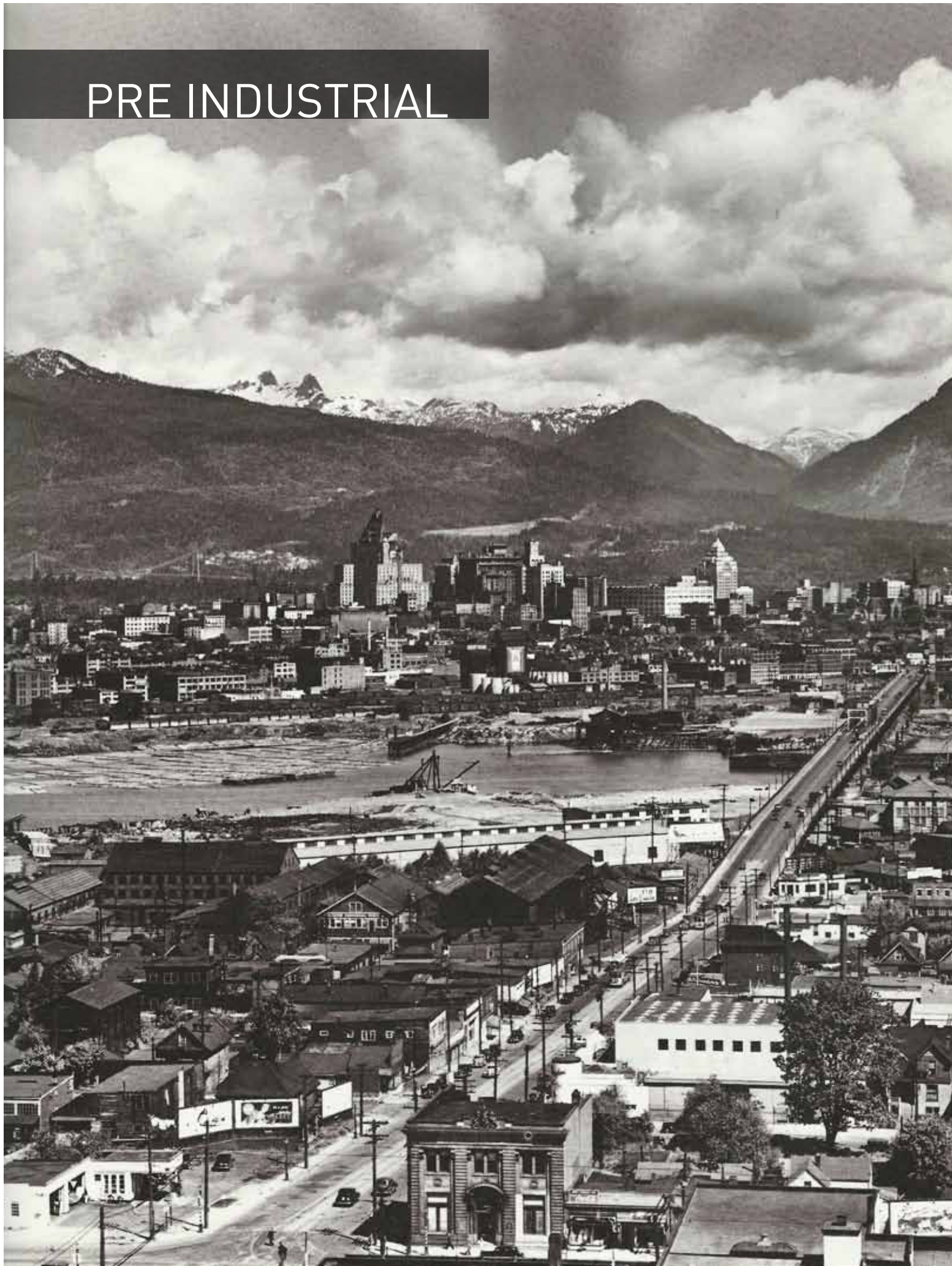
# BACKGROUND

## FALSE CREEK





## PRE INDUSTRIAL



## POST INDUSTRIAL



False Creek was heavily industrial until the 1960s. In the 1960s and 1970s the city planned for redevelopment of the area, and in the 1980s the area was transformed into residential and public space.



A historical black and white photograph of Robson Square in Vancouver. The square is filled with a large crowd of people, many wearing hats. In the background, there are several large, ornate buildings. On the left, a building with a clock tower is visible. In the center, a large building with a dome and classical columns is prominent. The square is paved, and there are some early 20th-century cars visible in the foreground. The overall scene depicts a busy public space in a major city.

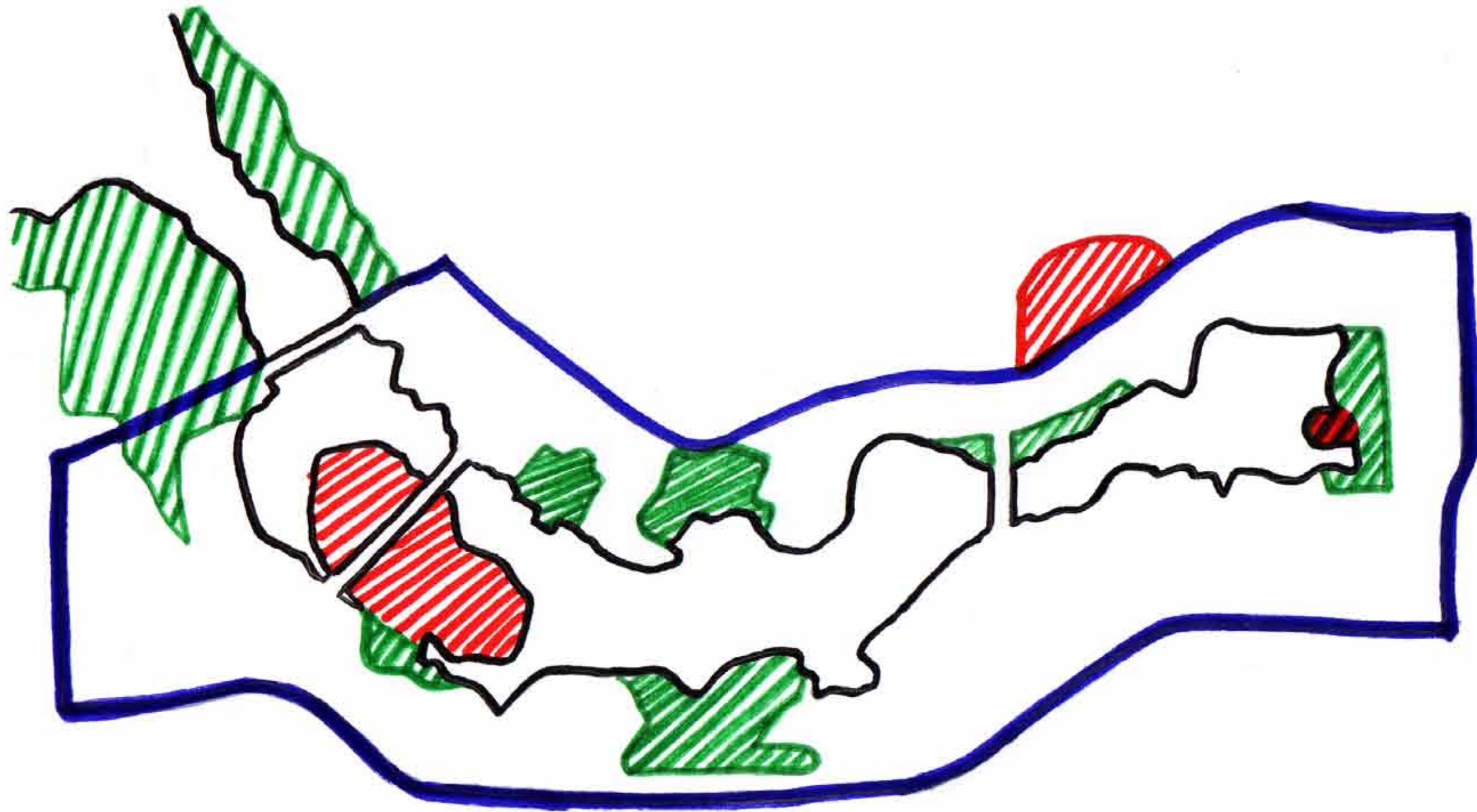
# ROBSON SQUARE

Robson square, built between 1979 and 1983, was designed by Arthur Erickson, intended house the new provincial law courts, government offices, and public space which connects to the Vancouver Art Gallery.



# PROGRAM

## FALSE CREEK

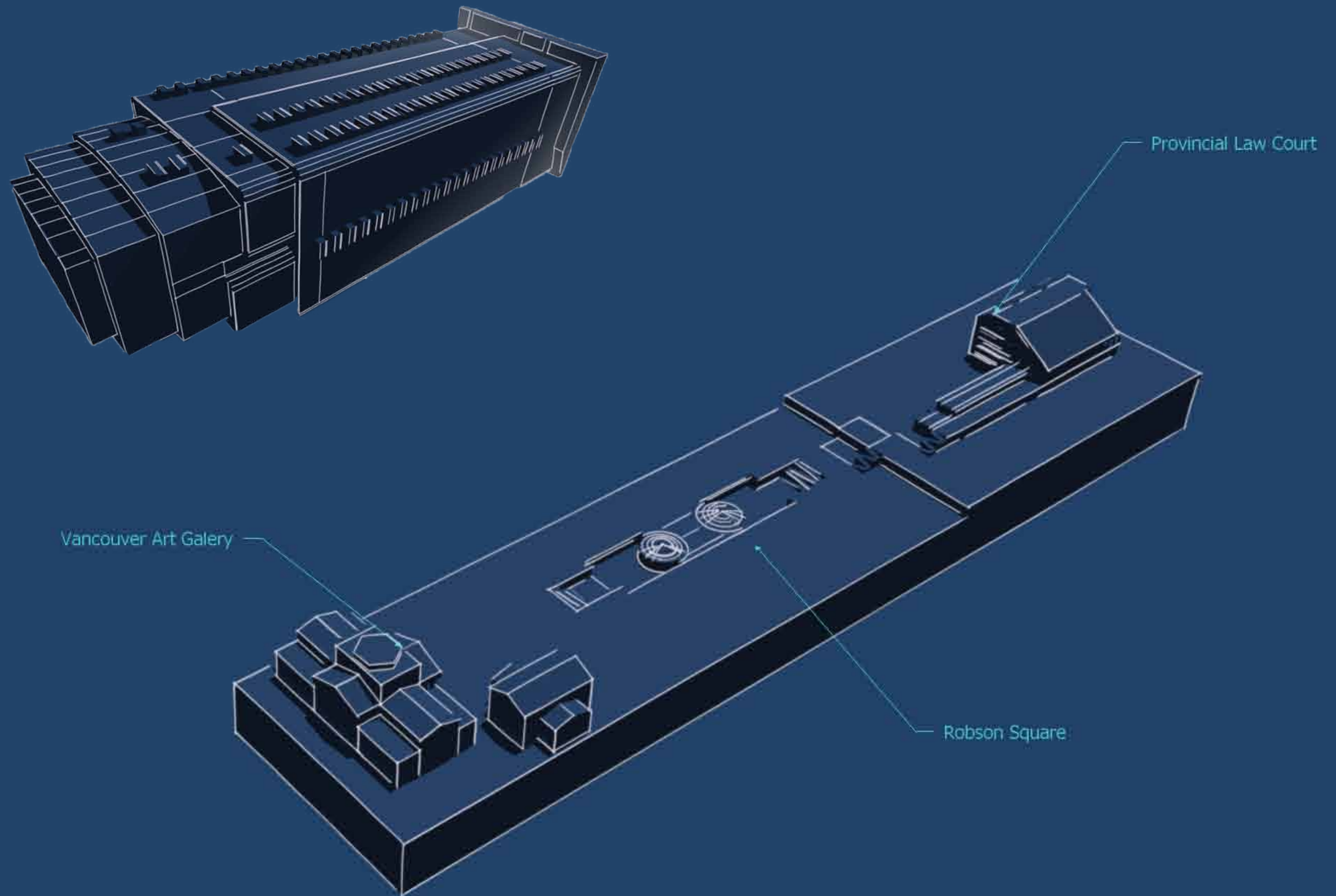


-  Parks
-  Public Spaces
-  False Creek Residential & Commercial Areas
-  Water



# PART I

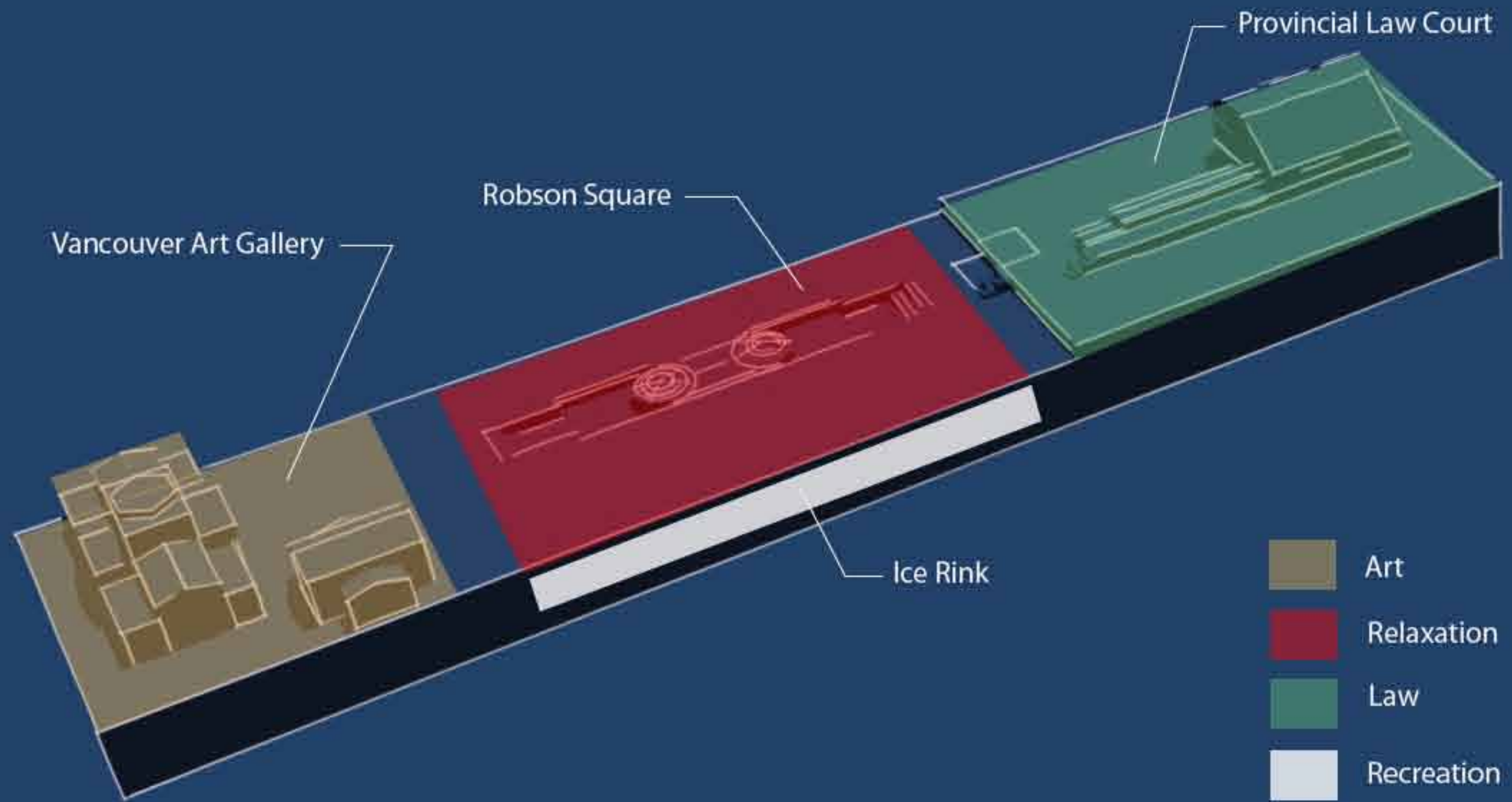
A TALL BUILDING LYING ON ITS SIDE





# PROGRAM

## ROBSON SQUARE



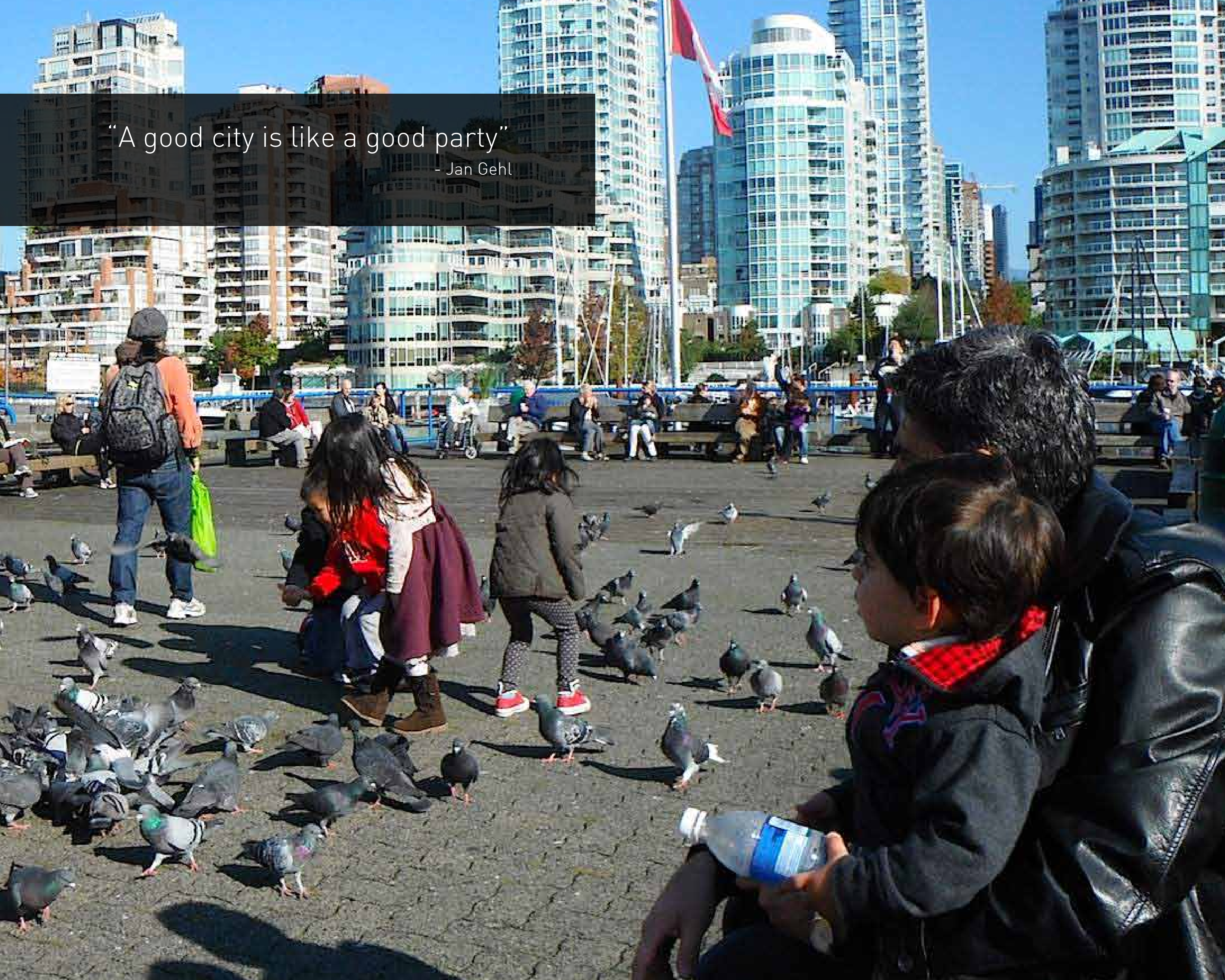


People gather where things are happening and spontaneously seek the presence of other people. Granville Island, which is a special area in the False Creek, satisfies the optional and social activities for the city dwellers.





“A good city is like a good party”  
- Jan Gehl





Activity space invite people to express themselves, play and exercise in city space covers an important topic with the goal of creating lively healthy cities. Several festivals taken place at Granville Island add to daily framework and activities.

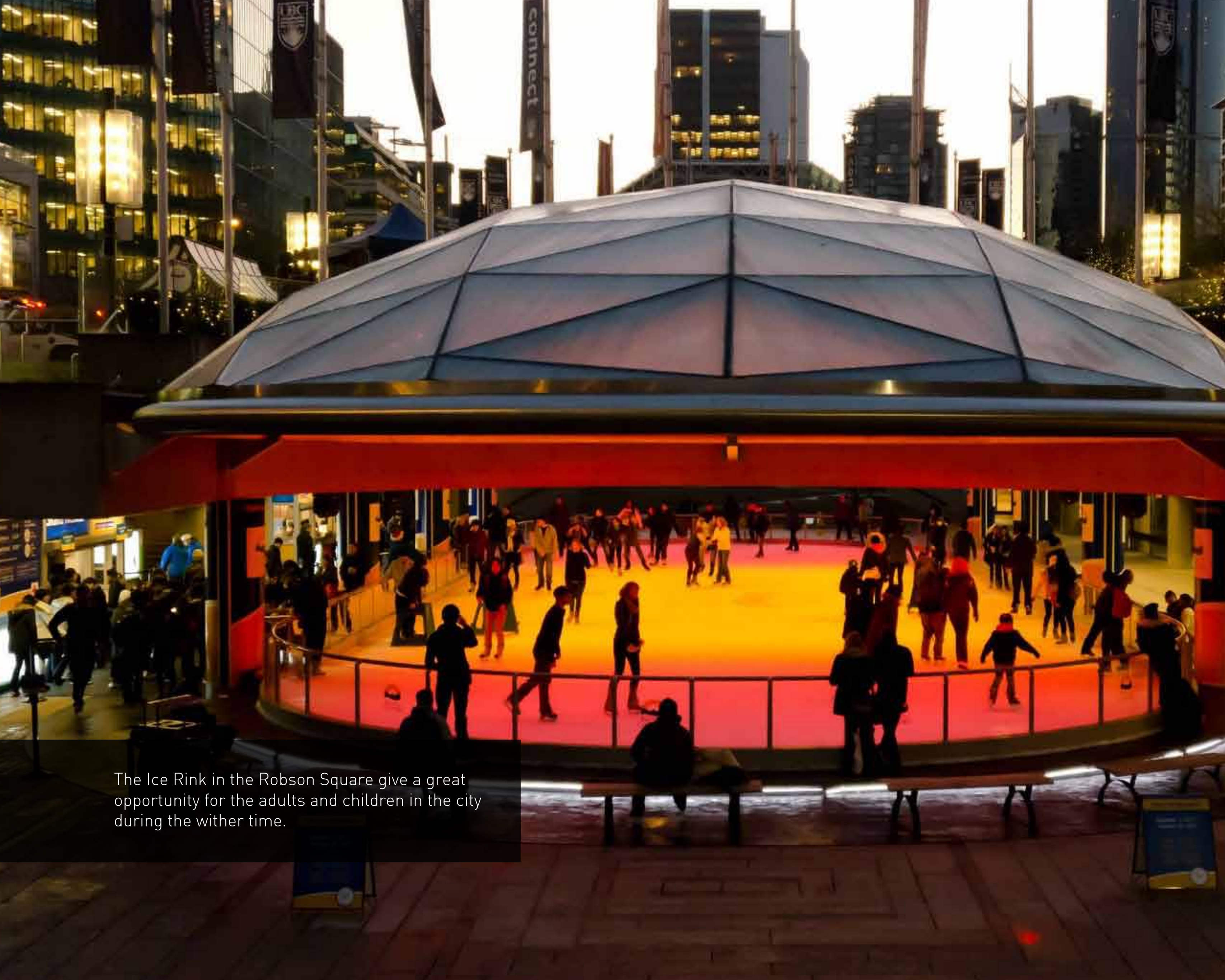




In downtown Vancouver, which is a prosperous area, staying activities are largely recreational activities. Robson Square is one of Vancouver's new well-functioning city spaces, and many of the city's neglected lanes and arcades have been incorporated as Ice Rink and UBC Robson Square.







The Ice Rink in the Robson Square give a great opportunity for the adults and children in the city during the winter time.



# FALSE CREEK

Lying on the north and southeast side of False Creek, False Creek is an ideal residential area. With apartment buildings that are around 20 stories high, residents can have amazing view of the shore and the surroundings.






THE TIDES • THE MO



Because Cycling and walking are encouraged in False Creek, human scale is a primary scale for False Creek. Signs and other information around the area is designed for people to perceive while walking, jogging or cycling.





With beautiful neighbourhood and public spaces around False Creek, it's obvious where the residents spend their leisure time at. Parks like George Wainborn Park and David Lam Park, inspire people to spend hours doing outdoor activities like picnic or biking.

LENGTHY STAYS MEAN LIVELY CITY



# LESS ROADS - LESS TRAFFIC



False Creek comprises a lot of apartment and commercial space and in order to keep False Creek connected with other community, car traffic is inevitable. However, it is designed to reduce car traffic and encourage people to bike or walk by building small roads and have more space for bicycle routes and walkways.





# ROBSON SQUARE


Comprises three city blocks at about 1.3m square feet and at 42.37m in height, Robson Square is considered to be a rarely large square which is bigger than many old squares in Europe. However, by the well thought out design, the square has a human dimension in mind which allows for social interaction. At less than 50m in height, people can be recognized from the highest point to the lowest point. Also, a bit over 100m allows people to have a general view of the square.



Everything within Robson Square is designed for human scale aka 5km/h scale. Because Robson Square is designed for people to walk, sit and relax, it is designed so that people can view details of the surroundings in a close distance.





An aerial night photograph of Robson Square in Vancouver. The square is filled with a large crowd of people. In the center, there is a circular structure with a glass and steel roof, which appears to be an outdoor ice skating rink. The area is illuminated by numerous bright spotlights and festive lights, including strings of warm white lights on trees and buildings. The overall atmosphere is vibrant and festive.

Robson Square is considered to be one of the most frequented pedestrians route in the city. The space itself invites people to spend hours and hours in Robson Square because it's a great location for public gathering, celebration and cultural activities etc. especially in the Summer. The Ice Rink also helps to keep people coming to Robson Square in the winter to experience the unique outdoor skating.



After two years of construction, Robson Square was reopened to vehicles on September 5th, 2011. The reopening to vehicles receives a lot of bad impression from the public because during the two years of construction, roads were closed for pedestrians. During that two-year period, people spent their time walking around Robson Square with extra space that was taken from the closed roads. It also opposes to Jan Gehl's concept of "lively city" that tries to reduce car traffic and induce cycling and walking instead.





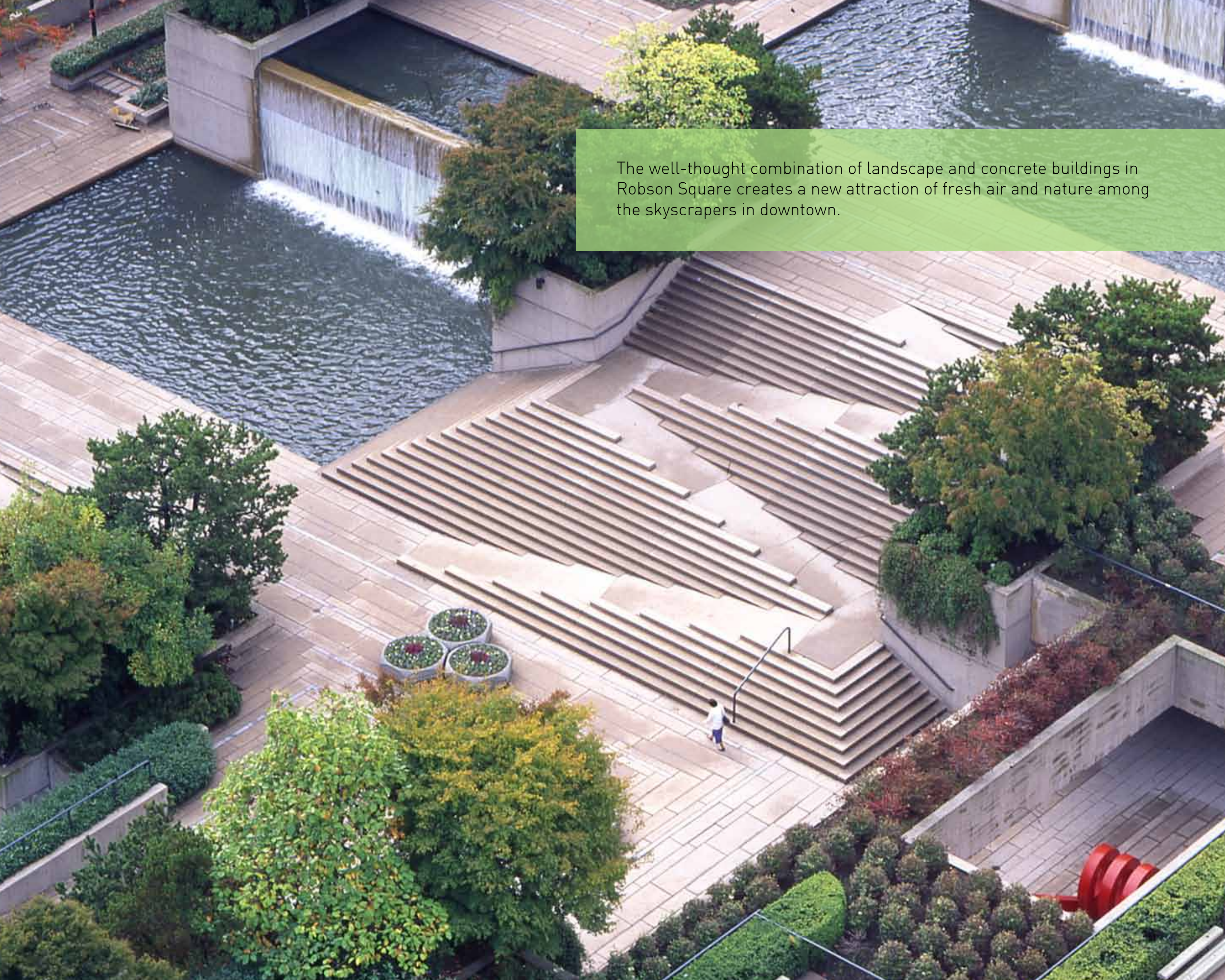
# GREEN



"The presence of green elements passes on a message about recreation, introspection, beauty, sustainability and diversity of nature."

- Jan Gehl





The well-thought combination of landscape and concrete buildings in Robson Square creates a new attraction of fresh air and nature among the skyscrapers in downtown.





# ART

"Art makes a valuable quality contribution to city space; it communicates beauty, monumentality, remembrance of important events, comments on life in society, fellow inhabitants and city life, together with surprises and humour."

- Jan Gehl



# REFERENCES

Expanding Robson Square – the 800-block petition « . (n.d.). Vancouver Public Space Network. Retrieved February 26, 2012, from <http://vancouverpublicspace.wordpress.com/2011/08/16/expanding-robson-square-the-800-block-petition/>

False Creek North. (n.d.). Retrieved from <http://vancouver.ca/commsvcs/currentplanning/urbandesign/br2pdf/falsecreek.pdf>

Gehl, J. (2010). Cities for people. Washington DC: Island Press.  
Vancouver's First Century. (1977). Vancouver: J.J. Douglas Ltd.

Kluckner, M. (1984). Vancouver the way it was. North Vancouver: Whitecap Books Ltd.

Provincial Law Courts | Buildings | EMPORIS. (n.d.). EMPORIS - Building data and construction projects worldwide. Retrieved February 26, 2012, from [emporis.com/building/provinciallawcourts-vancouver-canada](http://emporis.com/building/provinciallawcourts-vancouver-canada)

# IMAGES

Kluckner, M. (1984). Vancouver the way it was. North Vancouver: Whitecap Books Ltd. (Photo on page 86.)

Vancouver's First Century. (1977). Vancouver: J.J. Douglas Ltd. (Photo on page 137.)

[http://www.hdwallpapers.in/walls/false\\_creek\\_at\\_night-wide.jpg](http://www.hdwallpapers.in/walls/false_creek_at_night-wide.jpg)

<http://www.sugarfly.ca/wp-content/uploads/2011/11/False-Creek-at-Sunset1.jpg>

<http://2.bp.blogspot.com/-RmnshN3krb8/TkE1AzV7DuI/AAAAAAAAAFQY/OGEO218Deio/s1600/P1010958.JPG>

<http://2.bp.blogspot.com/-vn5WGKwKfpw/ThHP2kKHVYI/AAAAAAAAAQI/hobaRxzNK2M/s1600/069.JPG>

<http://stephenrees.files.wordpress.com/2011/05/dscn3926.jpg>

<http://www.straight.com/files/images/wide/P1000805.JPG>

<http://2.bp.blogspot.com/-GkuYpbrwBKs/Te7l5JLM5sI/AAAAAAAAABcg/TQ-AG-IZBjY/s1600/DSC02541.JPG>

<http://enviropaul.files.wordpress.com/2011/08/p82019462.jpg>

[http://freemasonry.bcy.ca/biography/rattenbury\\_f/courthouse-front.jpg](http://freemasonry.bcy.ca/biography/rattenbury_f/courthouse-front.jpg)

<http://baronscameron.files.wordpress.com/2010/01/van01-176-copy1.jpg>

<http://www.flickr.com/photos/55266206@N00/4408983339/in/photostream/>

[http://www.raic.org/honours\\_and\\_awards/awards\\_xxe/2011/images/robson02.jpg](http://www.raic.org/honours_and_awards/awards_xxe/2011/images/robson02.jpg)

<http://www.vixation.com/pix/%5B03-02-23%5D%20Blading%20at%20False%20Creek%20-vix.jpg>

<http://www.nikki-schmitz.de/02.Tag0095.JPG>

[http://3.bp.blogspot.com/\\_d1K1e5Czx6s/TBSH8mh00aI/AAAAAAAYJA/CKVwaX3H7oc/s1600/IMG\\_7134.jpg](http://3.bp.blogspot.com/_d1K1e5Czx6s/TBSH8mh00aI/AAAAAAAYJA/CKVwaX3H7oc/s1600/IMG_7134.jpg)

<http://natashairvine.files.wordpress.com/2011/03/vancouver-art-gallery.jpg>

[http://1.bp.blogspot.com/\\_GCNL\\_T5PwA8/S-RB6Aouf1I/AAAAAAAAAqs/8QvgbLkStFg/s1600/Dragonboats.JPG](http://1.bp.blogspot.com/_GCNL_T5PwA8/S-RB6Aouf1I/AAAAAAAAAqs/8QvgbLkStFg/s1600/Dragonboats.JPG)

[http://2.bp.blogspot.com/-5PU\\_7FriHTM/TpsJ7OQIPPI/AAAAAAAAANQ/tniANXlhJ6s/s1600/Kids\\_among\\_the\\_pidgeons.jpg](http://2.bp.blogspot.com/-5PU_7FriHTM/TpsJ7OQIPPI/AAAAAAAAANQ/tniANXlhJ6s/s1600/Kids_among_the_pidgeons.jpg)

[http://4.bp.blogspot.com/\\_wQfk\\_dvIJau/S\\_MHli\\_gyII/AAAAAAAABg/2sUeA-HB8Xk/s1600/DSC\\_5380.JPG](http://4.bp.blogspot.com/_wQfk_dvIJau/S_MHli_gyII/AAAAAAAABg/2sUeA-HB8Xk/s1600/DSC_5380.JPG)

[http://4.bp.blogspot.com/\\_wQfk\\_dvIJau/S\\_MHli\\_gyII/AAAAAAAABg/2sUeA-HB8Xk/s1600/DSC\\_5380.JPG](http://4.bp.blogspot.com/_wQfk_dvIJau/S_MHli_gyII/AAAAAAAABg/2sUeA-HB8Xk/s1600/DSC_5380.JPG)

[http://www.anotherenthusiast.com/wp-content/uploads/2011/12/RB\\_20111204\\_0920a.jpg](http://www.anotherenthusiast.com/wp-content/uploads/2011/12/RB_20111204_0920a.jpg)