

Keith A. Horton · Glyn Williams-Jones ·
Harold Garbeil · Tamar Elias · A. Jeff Sutton ·
Peter Mouginis-Mark · John N. Porter · Steven Clegg

Real-time measurement of volcanic SO₂ emissions: validation of a new UV correlation spectrometer (FLYSPEC)

Received: 11 June 2003 / Accepted: 18 May 2005 / Published online: 9 December 2005
© Springer-Verlag 2006

Abstract A miniaturized, lightweight and low-cost UV correlation spectrometer, the FLYSPEC, has been developed as an alternative for the COSPEC, which has long been the mainstay for monitoring volcanic sulfur dioxide fluxes. Field experiments have been conducted with the FLYSPEC at diverse volcanic systems, including Masaya (Nicaragua), Poás (Costa Rica), Stromboli, Etna and Vulcano (Italy), Villarica (Chile) and Kilauea (USA). We present here those validation measurements that were made simultaneously with COSPEC at Kilauea between March 2002 and February 2003. These experiments, with source emission rates that ranged from 95 to 1,560 t d⁻¹, showed statistically identical results from both instruments. SO₂ path-concentrations ranged from 0 to >1,000 ppm-m with average correlation coefficients greater than $r^2=0.946$. The small size and low cost create the opportunity for FLYSPEC to be used in novel deployment modes that have the potential to revolutionize the manner in which volcanic and industrial monitoring is performed.

Keywords FLYSPEC · Volcanic emissions · Ultraviolet correlation spectrometer

Editorial responsibility: A. Woods

K. A. Horton (✉) · H. Garbeil · P. Mouginis-Mark · J. N. Porter
Hawaii Institute of Geophysics and Planetology, University of
Hawaii at Manoa,
1680 East-West Rd., Post 504, Honolulu, Hawaii 96822, USA
e-mail: keith@higp.hawaii.edu
Tel.: +808-956-4139
Fax: +808-956-6322

G. Williams-Jones
Department of Earth Sciences, Simon Fraser University,
8888 University Drive, Burnaby, British Columbia, V5A 1S6,
Canada

T. Elias · A. J. Sutton
U. S. Geological Survey, Hawaiian Volcano Observatory,
Hawaii National Park,
P.O. Box 51, 51 Crater Rim Drive, Hawaii 96718-0051, USA

S. Clegg
Department of Geology, University of Hawai'i at Hilo,
200 W. Kawili St., Hilo, Hawaii 96720, USA

Introduction

The ultraviolet correlation spectrometer (COSPEC) was initially developed by Barringer Research (Canada) in the 1960s for pollution monitoring of NO_x and SO₂ from industrial stacks, and was first applied to the study of volcanoes by Moffat and Millan (1971), Stoiber and Jepsen (1973) and Stoiber et al. (1983). Since then, it has been used extensively in conjunction with other geophysical and geochemical techniques for the study and routine monitoring of vigorously and quiescently degassing volcanoes (e.g., Caltabiano et al. 1992; Casadevall et al. 1987; Elias et al. 1998; Stoiber et al. 1986; Williams et al. 1990; Zapata et al. 1997). A limited number of COSPECs are still produced by Resonance Ltd. (Canada), however, the instrumental approach has remained essentially unchanged since its initial development. Nevertheless, until very recently, this has been one of the few reliable methods for SO₂ flux measurements at volcanoes. New spectroscopic techniques such as differential optical absorption spectroscopy (DOAS) and differential absorption lidar (DIAL) are now making the transition from atmospheric sciences to volcanology (Weibring et al. 1998; Weibring et al. 2002). In fact, with the advent of a new miniature UV spectrometer, Montserrat Volcano Observatory is now routinely using these miniature spectrometers, configured as automated scanning units (ScanSpec network), with spectral concentrations of SO₂ evaluated using the DOAS method (Edmonds et al. 2003; Galle et al. 2002; Platt 1994). Here we present work on a similar instrument, called the FLYSPEC for its small size, which uses a variation of the DOAS evaluation method, with the additional feature of incorporating an in situ correlation spectroscopy calibration system.

Instrument

The FLYSPEC consists of an Ocean Optics USB2000 ultraviolet spectrometer that uses an asymmetric crossed Czerny-Turner configuration. The detector is a 2,048-element charge coupled device (CCD) linear silicon array.

The spectrometer has a $2,400 \text{ lines mm}^{-1}$ plane grating, which, combined with a $25 \mu\text{m}$ slit, results in an optical resolution of 0.25 nm over a wavelength range of $177\text{--}330 \text{ nm}$ with a sampling resolution of 0.1 nm across the array. The entire spectrum in this range is sampled and stored. For the purposes of measuring SO_2 in real-time, a total of 8–9 absorption peaks and troughs between 304 and 320 nm are analyzed. Two known concentration SO_2 calibration cells, similar to those used in COSPEC, are mounted such that they may be easily inserted into the optical path of the instrument. With the addition of other UV absorbing gas calibration cells and selection of appropriate spectral peaks or curve fitting, it is possible to simultaneously measure multiple gases (COSPECs were developed to measure either SO_2 or NO_2). All of the spectrometer's components (i.e., optics, detector and electronics) are built into an extremely compact and lightweight unit ($89 \text{ mm} \times 64 \text{ mm} \times 34 \text{ mm}$, 200 g ; Fig. 1). Although the spectrometer is designed to accept an optical fiber input, we reduce light losses by mounting the “telescope”, which consists of a small fiber-optic collimating lens, directly to the spectrometer input aperture. This lens, in combination with a UV band-pass filter window located in the FLYSPEC's durable case (Fig. 1), results in a field of view of $\sim 2.5^\circ$ (44 mrad). The filter and case also reduce the amount of stray light reaching the spectrometer, while the

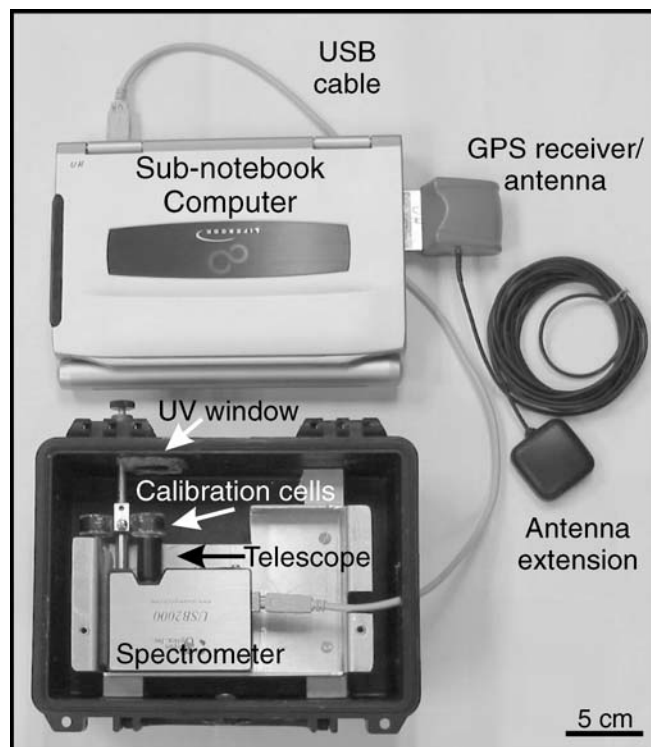


Fig. 1 FLYSPEC components consisting of a miniature spectrometer, sub-notebook computer, and GPS. High and low calibration SO_2 gas cells are shown mounted above the spectrometer and telescope. The “telescope” is a fiber-optic collimating lens mounted directly to the spectrometer input aperture. The lens, in combination with the UV band-pass filter window mounted on the case, provides a field of view of approximately 2.5° . Power for the spectrometer and GPS is supplied by the computer

case protects the spectrometer from harsh environments and vibration. All power to the system is provided by a sub-notebook computer (or any laptop) through the USB port for the spectrometer and through the PCMCIA slot for the GPS. An external GPS antenna provides flexibility in mounting for best satellite constellation viewing. The total mass of the FLYSPEC, including computer, protective case, cabling, and GPS is $<2 \text{ kg}$ and it can typically be operated continuously for 4–6 h with a standard high-capacity battery. This can be easily adapted to run for more extended periods off a 12 V vehicle battery or other power source.

Analysis

The FLYSPEC provides real-time display of the UV spectrum, calculation of the spectral absorbance, and a scrolling plot of the gas path-concentration in ppm-m, and corresponding GPS position and time. As with a COSPEC, the FLYSPEC has an adjustable data acquisition rate, with generally sufficient signal to noise at a full-spectrum acquisition rate of between $300\text{--}1000 \text{ ms}$.

Acquisition and subtraction of a dark frame is required to correct for dark current and electronic noise on the CCD array. To calibrate for SO_2 (or any given UV-absorbing gas species) path-concentration, a clear sky reference spectrum is collected outside of the gas plume. In addition, spectra are collected for the two (or more) calibration cells (Fig. 2A). The absorption

$$A_\lambda = -\log \left(\frac{S_\lambda - D_\lambda}{R_\lambda - D_\lambda} \right) \quad (1)$$

spectrum is thus calculated using the DOAS method (Platt 1994): where A_λ is the absorbance as a function of wavelength (λ) and S_λ , D_λ and R_λ are the spectral intensities of each sample, dark and references (clear sky and gas calibration), respectively (Fig. 2B). Absorbance peak-trough differences at each wavelength, as a function of the path-concentrations of the reference gas cells, are fit by a least-squares three-point quadratic to derive calibration coefficients. These coefficients are then applied to each profile spectrum deriving SO_2 column abundance in real-time.

This real-time comparison of reference background spectrum to measured spectra also has the benefit, which unlike COSPEC measurements, the FLYSPEC path-concentration results are relatively insensitive to changes in the background cloud cover or in elevation while collecting data due to increased number of wavelengths examined and fitting of the differences between SO_2 absorbance peaks and troughs. This retrieval method is in contrast to the laboratory spectrum DOAS method (Galle et al. 2002; Platt 1994), which uses a stored laboratory reference absorption spectrum that requires assumptions as to the atmosphere composition, and pressure and temperature of the plume. Many of the complications which must be addressed in fitting to model

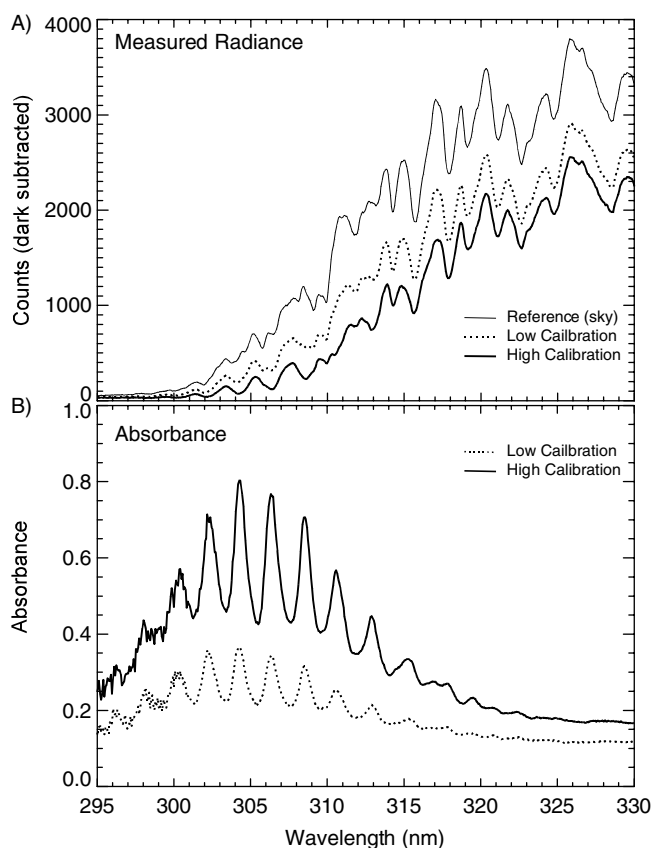


Fig. 2 (A) Raw spectral radiance measured by FLYSPEC showing the calibration spectra consisting of clear sky reference and low and high calibration cells. These spectra have all been dark-subtracted to reduce electronic and dark-current noise and correct for array non-uniformity. (B) Absorbance spectra of the low and high calibration cells

or laboratory spectra (e.g., inclusion of the Ring-effect Raman spectra and solar Fraunhofer lines) do not occur with FLYSPEC or COSPEC by nature of the correlation technique in which the radiance source (the solar illuminated sky) is the same for reference, calibration, and sample spectra. The ScanSpec network in Montserrat actually include a less frequent (3–4 times per year) field calibration using known concentration gas cells in order to investigate possible instrumental drift (Edmonds et al. 2003).

However, where field conditions preclude the acquisition of fresh calibration spectra, e.g., when operating in stationary mode in the presence of SO_2 , the FLYSPEC may employ stored calibration references in a similar fashion as the laboratory spectra DOAS method, with the advantage that the reference spectra are acquired with the FLYSPEC itself. This also eliminates the necessity of determining the slit function that must be convolved with laboratory reference spectra.

In typical FLYSPEC data collection mode, the derived path-concentration results (ppm-m) and corresponding GPS coordinates and time are saved in ASCII text format on the portable computer and can be examined with any spreadsheet software. Currently, all raw spectra are also stored in a binary file to allow reprocessing of the data

should that be desired. In road-based data collection, an important part of gas flux calculations is the cosine correction for perpendicularity between the traverse segment and gas plume direction. The use of an integrated GPS allows for automation of this correction, greatly reducing post-processing time, and increasing the quality of the data, by eliminating the requirements for strictly consistent vehicle speed and operator input. Furthermore, by assuming a normalized plume speed of 1 m s^{-1} (used to facilitate comparison between different instruments and methodologies; Zapata et al. 1997), a velocity-normalized gas flux can be calculated upon completion of each traverse, further reducing post-processing time.

Deployment

Due to the significant reduction in required power, size, weight, and cost of the FLYSPEC, a number of different operational modes can potentially be used to provide ground-truth measurements as well as base-line information on volcanic activity.

Whereas COSPEC measurements have been infrequently made on foot, the small size and weight of the FLYSPEC now make it substantially easier to deploy in areas of difficult access. The real-time integration of GPS position/time with pathlength-concentration now make temporal and spatial mapping of dispersed SO_2 sources feasible. An ongoing research and mapping project at Kilauea caldera which demonstrates this capability, involves acquiring FLYSPEC data with walking traverses in and around the actively degassing fumarole field. Similar experiments have been conducted by us at Vulcano (Italy) and Poás (Costa Rica). FLYSPEC has been deployed in stationary, tripod-mounted mode at Kilauea (Hawai'i), Stromboli (Italy), Villarica (Chile), and Masaya (Nicaragua). In the more common COSPEC method, the FLYSPEC has been mounted on ground-based vehicles and transported beneath gas plumes from several different sources, e.g., Masaya, Kilauea, Etna (Italy).

Multiple instruments can also be deployed as a ground-based array near the gas source to measure the instantaneous spatial distribution of the column abundance of a plume. These data can potentially be used for analyzing vent degassing and plume dispersion behavior. The incorporation of solid-state microprocessors and data-loggers along with wireless telemetry to remote continuous monitoring systems greatly facilitates this. For example, the Montserrat Volcano Observatory has deployed up to 2–3 scanning UV spectrometers (ScanSpec) to simultaneously measure both the plume height and instantaneous gas flux; these data are then telemetered back to the observatory (Edmonds et al. 2003). Expanding the FLYSPEC field of view may allow for the “capture” of complete sections of plume and thus reduce the uncertainty of scanning measurements caused by corrections for changing incidence angles of UV radiation.

As with COSPEC measurements, the largest source of uncertainty is caused by difficulties in accurately

measuring the wind speed, which is used as a proxy for the plume velocity vector. This uncertainty has been addressed by making airborne COSPEC and wind speed measurements at the plume height (Doukas 2002). We have recently also developed a simple alternative ground-based method using multiple FLYSPECS to directly measure plume velocity by correlating the path-concentration signal from each unit and determining the time offset (Williams-Jones et al. In press).

Results

Results of concurrent measurements with FLYSPEC and COSPEC at Kilauea volcano show excellent agreement. Comparison measurements were made in a variety of conditions incorporating areas of both low and high plume path-concentration, changes in elevation, and diverse sky conditions. Five simultaneous traverses were made with both COSPEC and FLYSPEC in the summit region of Kilauea in March 2002 and resulted in COSPEC values of 97 ± 17 metric tonnes per day (t d^{-1}) compared to FLYSPEC values of 95 ± 13 t d^{-1} (at wind speeds of 4.6 m s^{-1}). For a description of the traverse path and data collection technique, see Elias et al. (1998). A plot of path-concentration of one representative traverse is shown in Fig. 3A. Correlations for the five traverses gave $r^2 = 0.948 \pm 0.025$. A similarly excellent correlation ($r^2 = 0.995$) between COSPEC and FLYSPEC results was obtained from a vehicle-based traverse of the east rift eruption plume as it crossed the Chain of Craters Road, 10 km downwind of Pu`u`O`o in April, 2002. As shown in Fig. 3B, this measurement was of significantly higher concentrations than those around the summit region. Additional measurements of the east rift eruption plume made in February 2003, consisted of simultaneous data collection by three FLYSPECS and one COSPEC. As with previous validation experiments, there was an excellent correlation ($r^2 = 0.985 \pm 0.010$) of path-concentration between all four instruments. This traverse varied in elevation between 1,000 and 50 m and while there is a noticeable drift in the COSPEC signal towards lower altitude, this is no drift and only a slight increase in baseline noise for the FLYSPEC measurements.

Also during the February 2003 deployment at Kilauea, five sets of vehicle-based measurements were made with the COSPEC and three FLYSPECS in the summit area, with a resulting emission rate of 95 ± 32 t d^{-1} (at wind speeds of 3.3 – 4.3 m s^{-1}). This resulted in an average path-concentration correlation of $r^2 = 0.946 \pm 0.028$ for all four instruments over the five traverses. These data were collected in variable sky conditions, with occasional periods of rain. The following day, under clear skies, two FLYSPECS were simultaneously deployed in a hand-held mode on walking traverses closer to the source. The resulting measured emission rate from both instruments was 100 ± 39 t d^{-1} (at wind speeds of 4.7 – 5.3 m s^{-1}), consistent with the previous day's results.

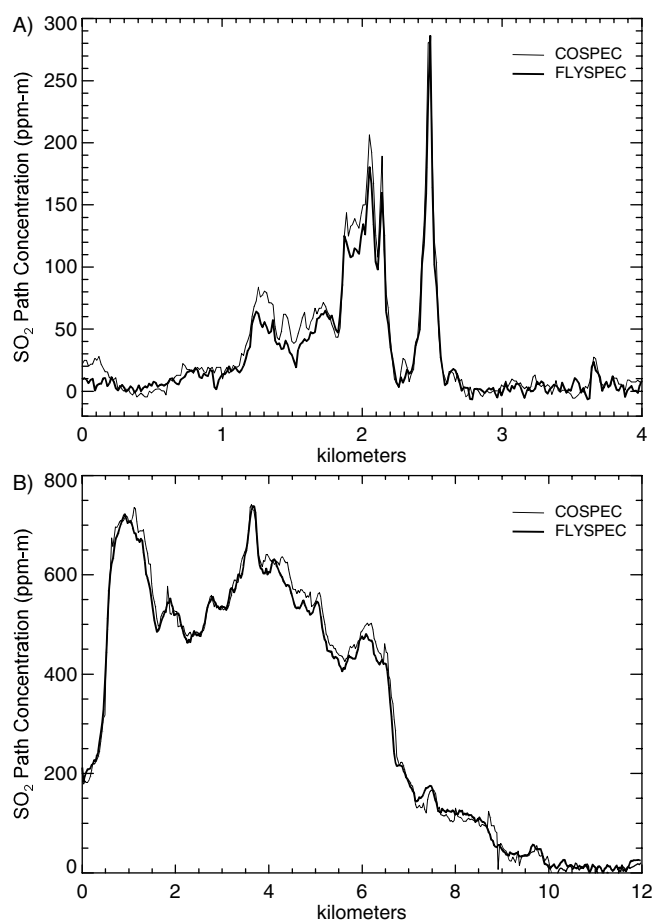


Fig. 3 (A) Profile comparing real-time FLYSPEC (*thick line*) results and reduced COSPEC (*thin line*) data acquired simultaneously at Kilauea, March 2002, in the summit caldera region with a resulting correlation coefficient of 0.970. (B) Profiles of high SO₂ column abundance from the east rift eruption plume, April 2003, comparing COSPEC and FLYSPEC path-concentration data, with $r^2 = 0.995$

Conclusions

While being the mainstay of volcanic gas monitoring for the past 30 years, the COSPEC remains a large and cumbersome instrument. In contrast, the FLYSPEC is small and lightweight, with a robust casing and minimal power consumption. The FLYSPEC is also significantly less expensive than a COSPEC, facilitating the deployment of multiple instrument networks in conjunction with other geophysical and geochemical instruments. The results presented here demonstrate the excellent correlation ($r^2 > 0.946$) of the new technology with a well-established technique used for volcanic SO₂ measurements. The low cost and ease of use makes FLYSPEC a viable instrument for volcano observatories in developing countries, while maintaining continuity with monitoring activities at more established programs. Additionally, the FLYSPEC collects data over an entire band of the UV spectrum allowing for the possibility of simultaneous real-time measurement of multiple UV-absorbing gas species (e.g., SO₂, NO_x, O₃, etc.). The FLYSPEC has many possible applications and de-

ployment options, such as hand-held mobile traverses and real-time autonomous continuously recording networks, and has the potential to greatly improve the manner in which volcanic, industrial, and environmental monitoring is performed.

Acknowledgments This effort was supported by NASA grant NAG5-10640 from the EOS Project Office, the Hawaii Institute of Geophysics and Planetology, and the U. S. Geological Survey, Volcano Hazards Program. This is SDEST contribution No. 6660 and HIGP contribution No. 1408.

References

- Caltabiano T, Guiduzzi G, Leuzzi S, Romano R (1992) Helicopter borne COSPEC SO₂ flux measurements. *Acta Volcanol* 2:95–98
- Casadevall TJ, Stokes JB, Greenland LP, Malinconico LL, Casadevall JR, Furukawa BT (1987) SO₂ and CO₂ emission rates at Kilauea Volcano, 1979–1984. In: Decker RW, Wright TL, Stauffer PH (eds) *Volcanism in Hawaii*. US Geol Surv Prof Paper, pp 771–780
- Doukas MP (2002) A new method for GPS-based wind speed determinations during airborne volcanic plume measurements. *US Geol Surv Open-File Rep* 02–395, pp 13
- Edmonds M, Herd RA, Galle B, Oppenheimer C (2003) Automated, high time-resolution measurements of SO₂ flux at Soufrière Hills Volcano, Montserrat. *Bull Volcanol* 65:578–586
- Elias T, Sutton AJ, Stokes JB, Casadevall TJ (1998) Sulfur dioxide emission rates of Kilauea Volcano, Hawaii, 1979–1997. *US Geol Surv Open-File Rep* 98–462, pp 41
- Galle B, Oppenheimer C, Geyer A, McGonigle A, Edmonds M, Horrocks L (2002) A miniaturised ultraviolet spectrometer for remote sensing of SO₂ fluxes: a new tool for volcano surveillance. *J Volcanol Geotherm Res* 119:241–254
- Moffat AJ, Millan MM (1971) The applications of optical correlation techniques to the remote sensing of SO₂ plumes using sky light. *Atmos Environ* 5:677–690
- Platt U (1994) Differential optical absorption spectroscopy (DOAS). In: Sigrist MW (ed) *Air monitoring by spectroscopic techniques*. Wiley, New York, pp 27–84
- Stoiber RE, Jepsen A (1973) Sulfur dioxide contributions to the atmosphere by volcanoes. *Science* 182:577–578
- Stoiber RE, Malinconico JLL, Williams SN (1983) Use of the correlation spectrometer at volcanoes. In: Tazieff H, Sabroux JC (eds) *Forecasting volcanic events*. Elsevier, New York, pp 424–444
- Stoiber RE, Williams SN, Huebert BJ (1986) Sulfur and halogen gases at Masaya caldera complex, Nicaragua: total flux and variations with time. *J Geophys Res* 91:12215–12231
- Weibring P, Edner H, Svanberg S, Cecchi G, Pantani L, Ferrara R, Caltabiano T (1998) Monitoring of volcanic sulphur dioxide emissions using differential absorption lidar (DIAL), differential optical absorption spectroscopy (DOAS), and correlation spectroscopy (COSPEC). *Appl Phys B* 67:419–426
- Weibring P, Swartling J, Edner H, Svanberg S, Caltabiano T, Condarelli D, Cecchi G, Pantani L (2002) Optical monitoring of volcanic sulphur dioxide emissions: comparison between four different remote-sensing spectroscopic techniques. *Opt Las El* 37:267–284
- Williams SN, Sturchio NC, Calvache VML, Mendez FR, Londono CA, Garcia PN (1990) Sulfur dioxide from Nevado del Ruiz Volcano, Colombia: total flux and isotopic constraints on its origin. *J Volcanol Geotherm Res* 42:53–68
- Williams-Jones G, Horton K, Elias T, Garbeil H, Mouginiis-Mark P, Sutton AJ, Harris AJL (In Press) Accurately measuring volcanic plume velocity with multiple UV spectrometers. *Bull Volcanol*
- Zapata JA, Calvache VML, Cortés JGP, Fischer TP, Garzon VG, Gómez MD, Narváez ML, Ordoñez VM, Ortega EA, Stix J, Torres CR, Williams SN (1997) SO₂ fluxes from Galeras Volcano, Colombia, 1989–1995: Progressive degassing and conduit obstruction of a Decade Volcano. *J Volcanol Geotherm Res* 77:195–208