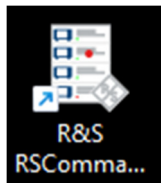


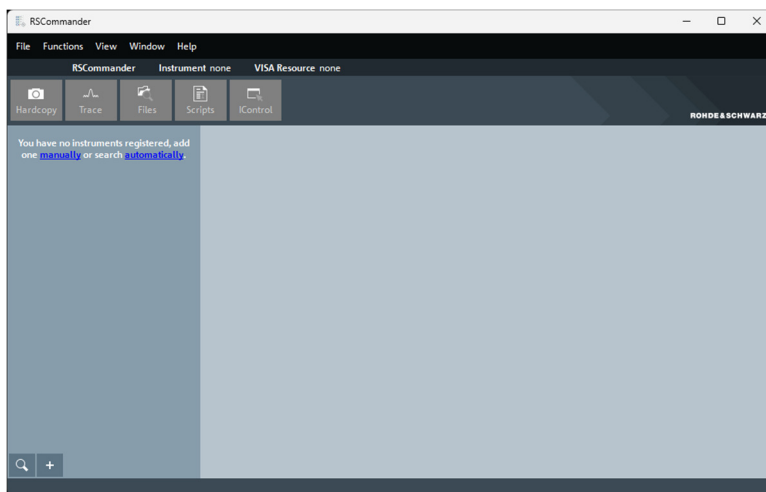
# ENSC320-2025: Using RSCommander in Lab computers to Capture Scope Screenshot or Trace data

## Software Interface

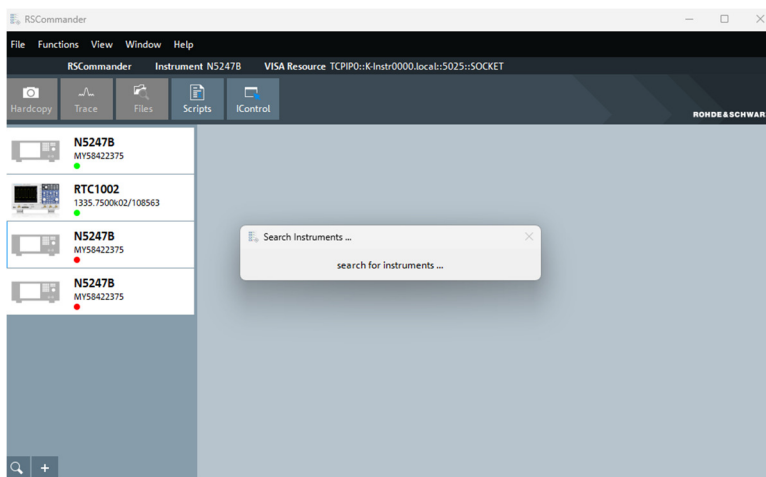
Start RSCommander by double clicking the desktop shortcut:



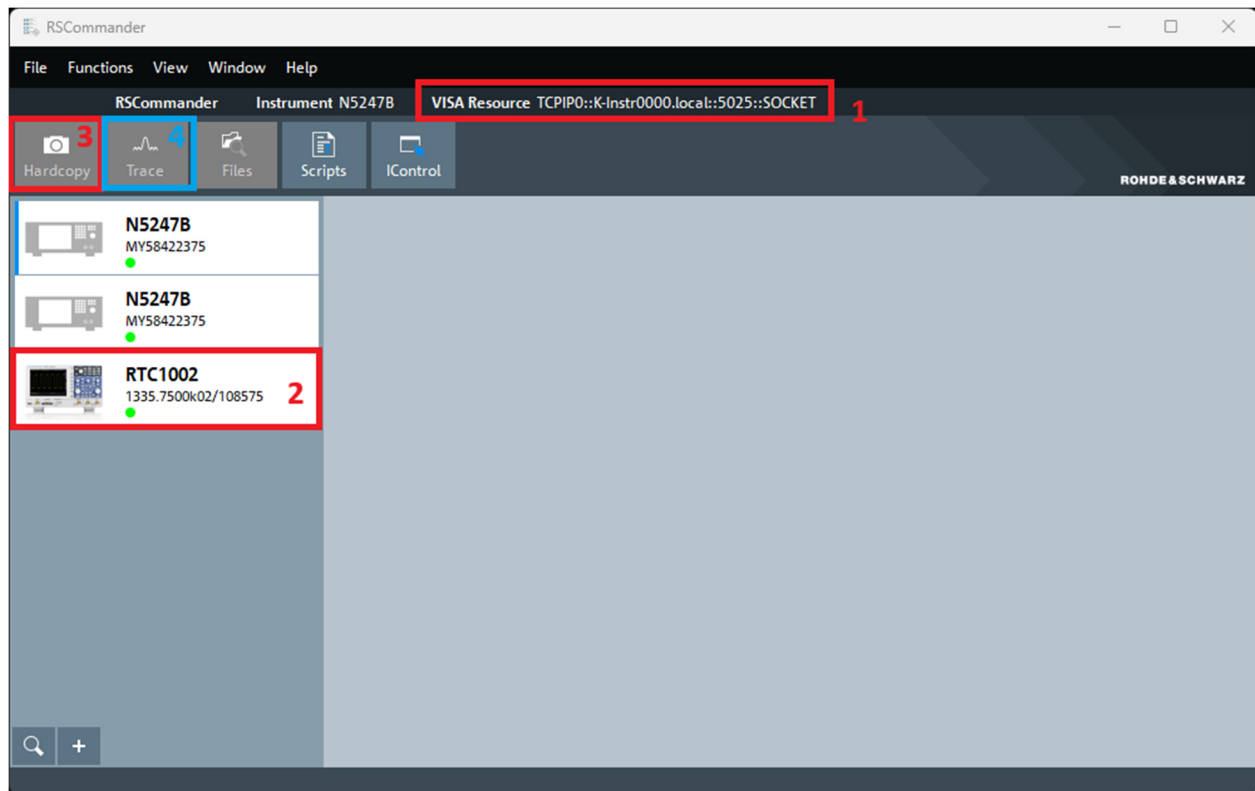
You should see the application window:



Click [automatically](#) to start searching for equipment. Once you see the 'RTC1002' show up, press "Alt" and "4" on the keyboard to exit the otherwise endless search.



Once the Scope shows up in the software, the highlighted boxes are explained by numbers 1-4 below.



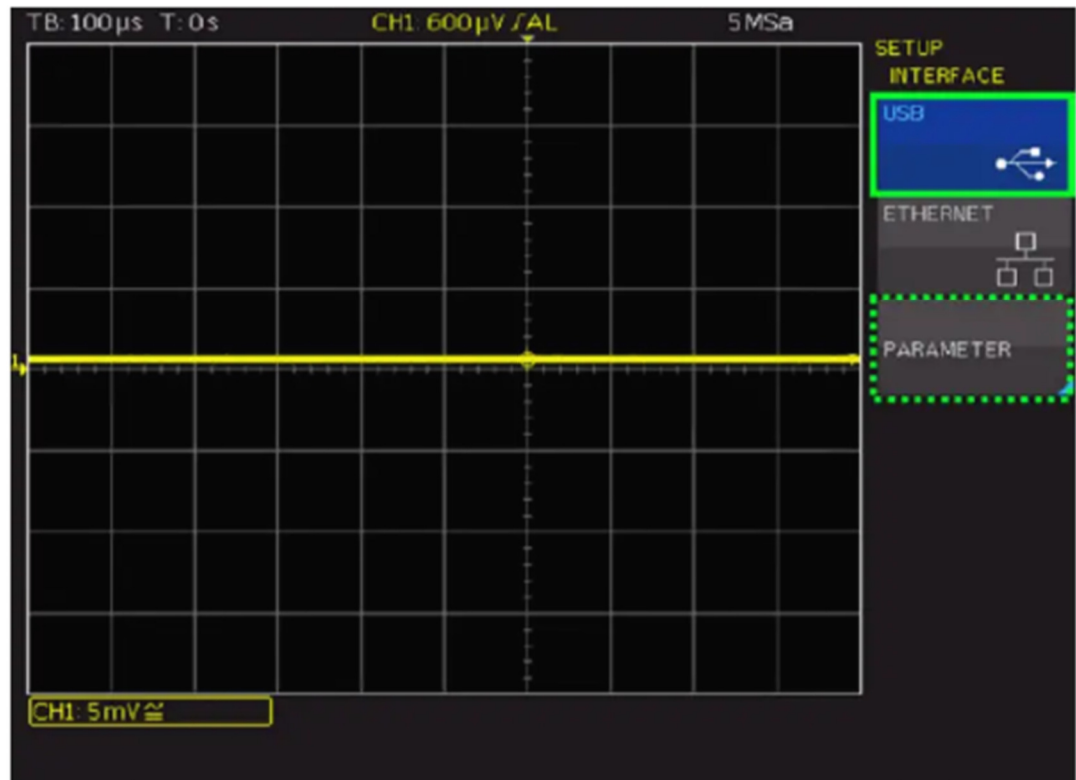
1. First check if you have the bench equipment connected through USB; this is indicated by the established link "**VISA Resource USB0::0x0AAD::0x0119::108575::INSTR**" at the top.

*Note: Each bench will have its own USB address.*

If you can't see the instrument connected through USB, such as the link shown in the capture, then it is possible that the connection settings were not set-up as the default. To fix this, follow the steps below.

### Connecting the instrument using USB

1. Connect the USB cable to the USB type B connector at the rear panel of the instrument, and to the computer.
2. Press the [SETUP] key.
3. Press "INTERFACE".
4. Press "USB" to select USB connection.
5. Press "PARAMETER".



6. Select the USB mode:
  - USB TMC (Test & Measurement Class)
  - USB VCP (Virtual Com Port)
  - USB MTP (Media Transfer Protocol)

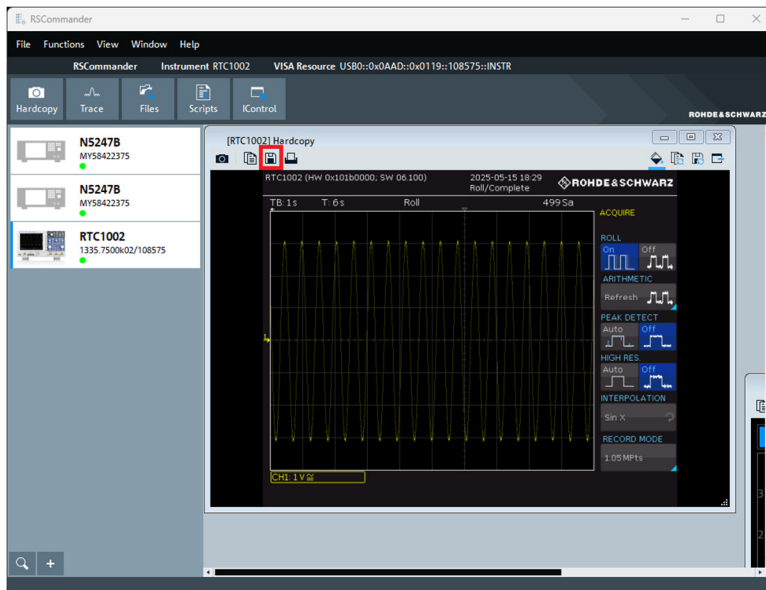
To establish the USB connection that works with RSCommander, Select "**USB TMC**" mode.

2. Connect to the Scope by clicking the Oscilloscope model: **RTC1002**.
3. If you want to transfer the Scope screen to your computer, click "**Hardcopy**" to see the screen capture.
4. If you want to transfer the real-time trace data to your computer, click "**Trace**" and allow a few minutes (!) to download the trace data from the Scope.

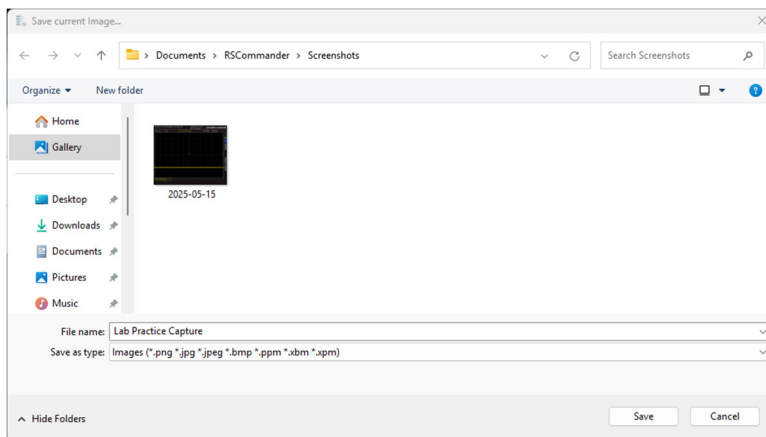
## Saving Capture and Data

### Saving Screen Capture:

After you have the desired capture, click the **“Save”** button:



This will bring up the save window:

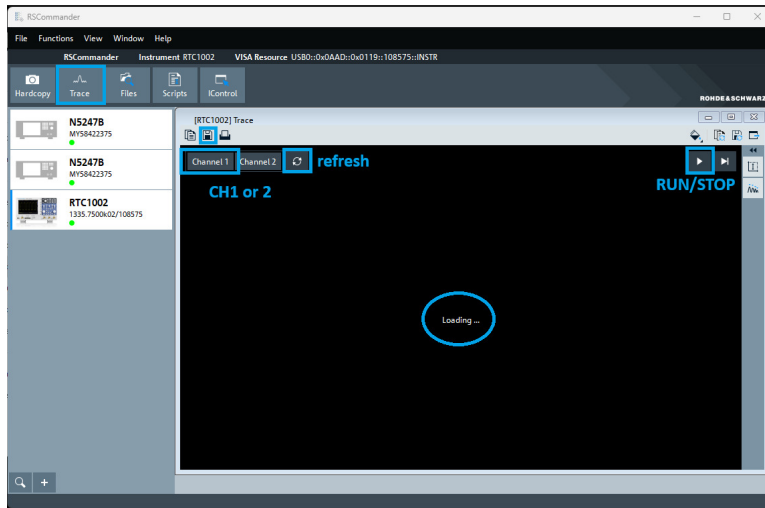


Enter the capture file name and click **“Save”**.

The capture will be saved to your user folder (replace with your **sfu\_id**) such as:  
C:\Users\yza585\Documents\RSCOMMANDER\Screenshots.

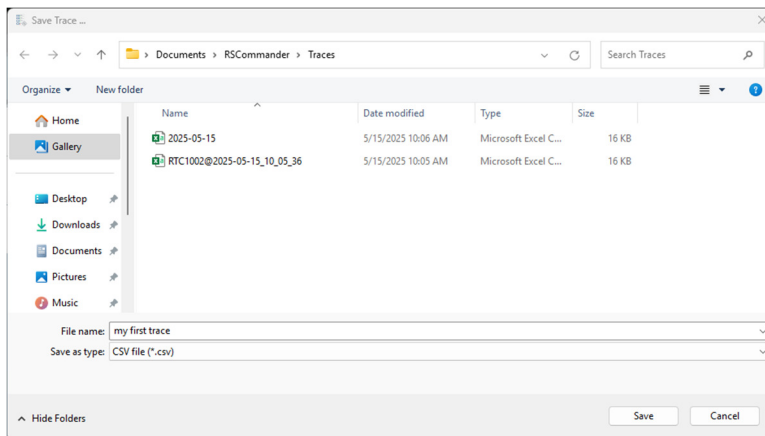
## Save trace data:

Select the desired trace to save: either Channel 1 (yellow trace) or Channel 2 (blue trace).



If the trace is not clear, click the “Refresh” button.

Click the save button and enter the desired name for your trace data.



The trace data will be in .csv format and you will find the saved file in folder (replace with your **sfu\_id**) such as:

C:\Users\yza585\Documents\RSCOMMANDER\Traces

*Recall: the trace data may take a few minutes to load depending on the data and the resolution.*