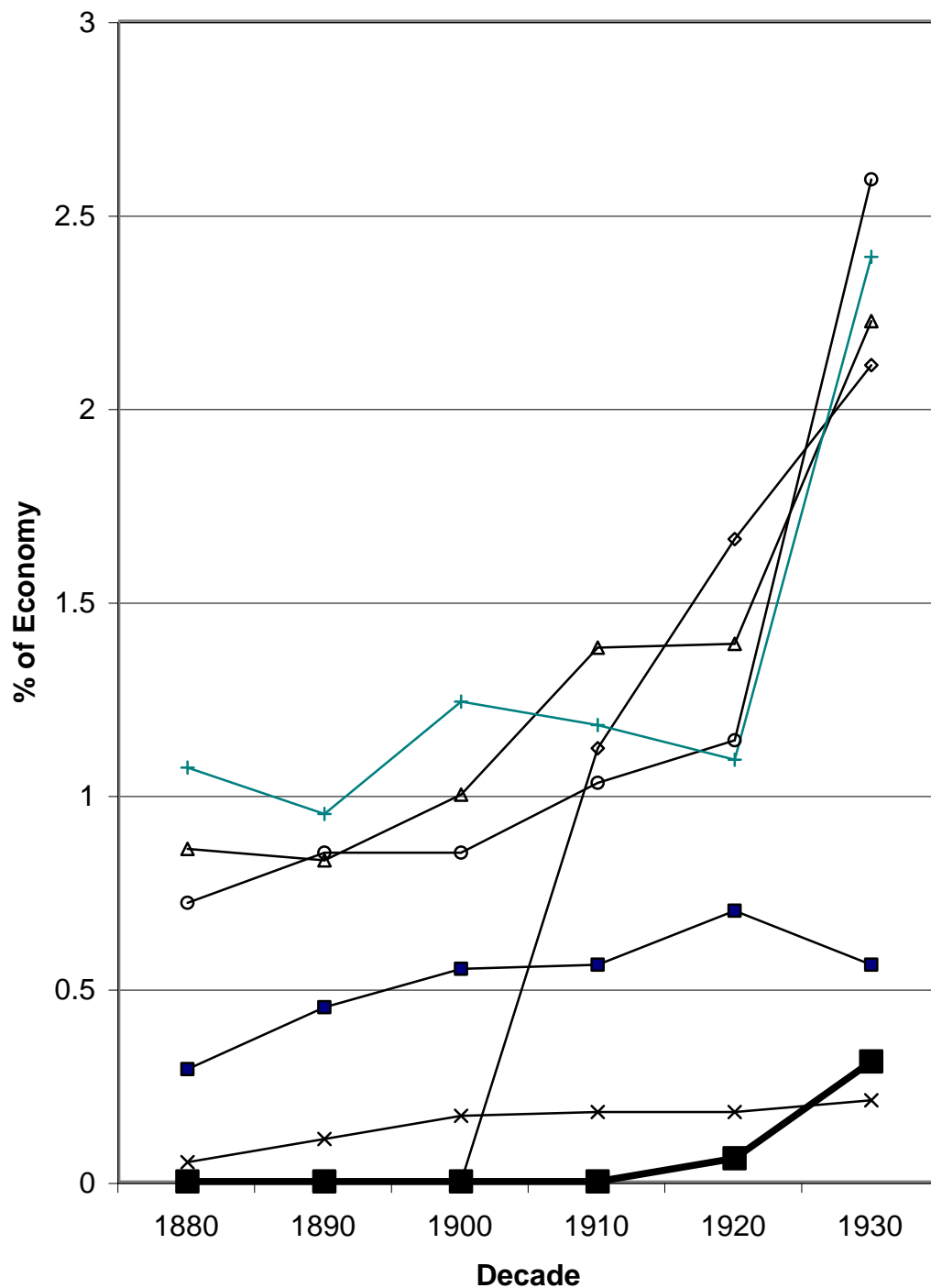
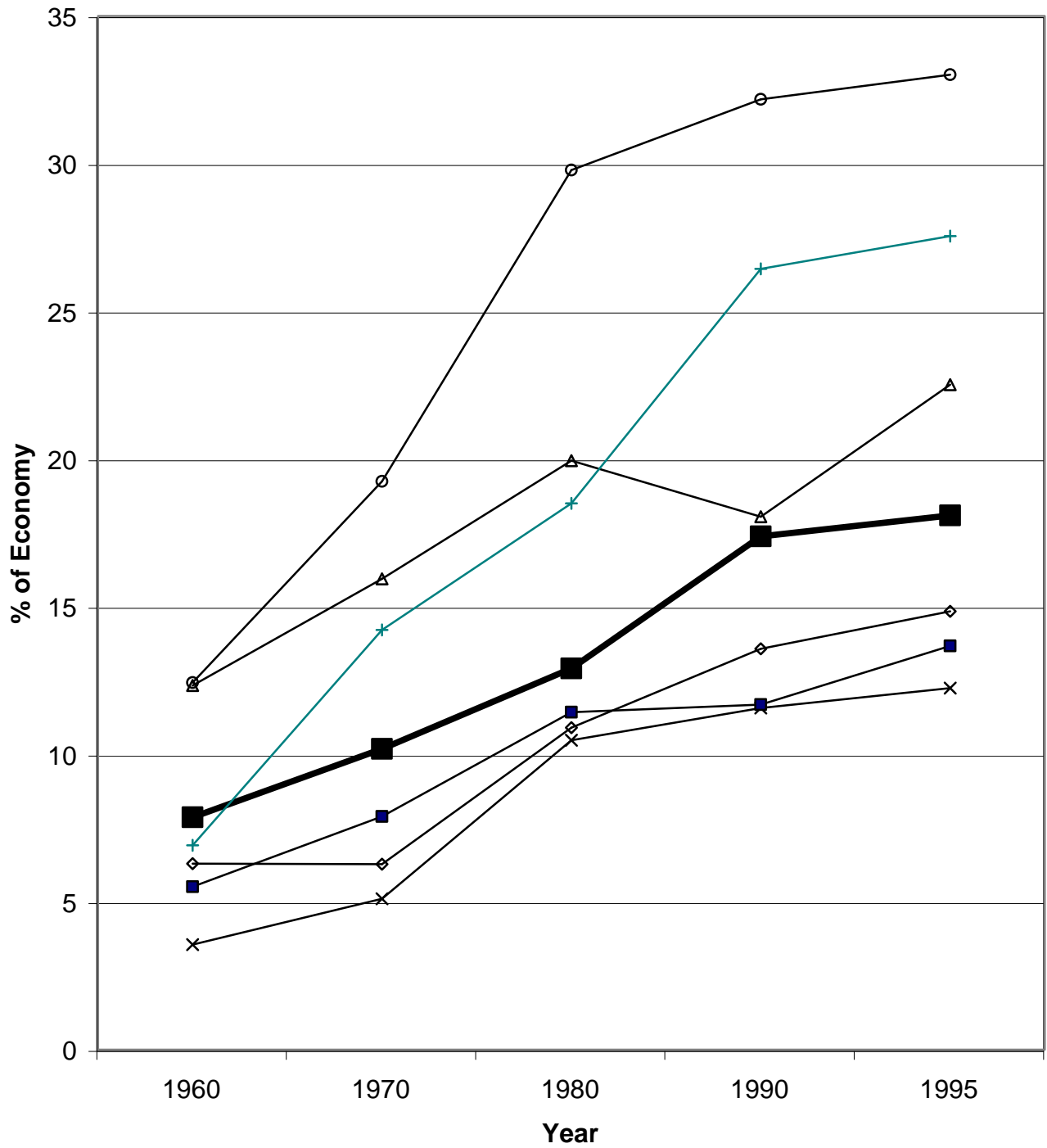


Social Spending, 1880 to 1930 (Lindert: welfare, unemp, pensions, health, housing)



—◇— Australia —■— Canada —△— UK —×— Japan —■— USA —○— Sweden —+— Norway

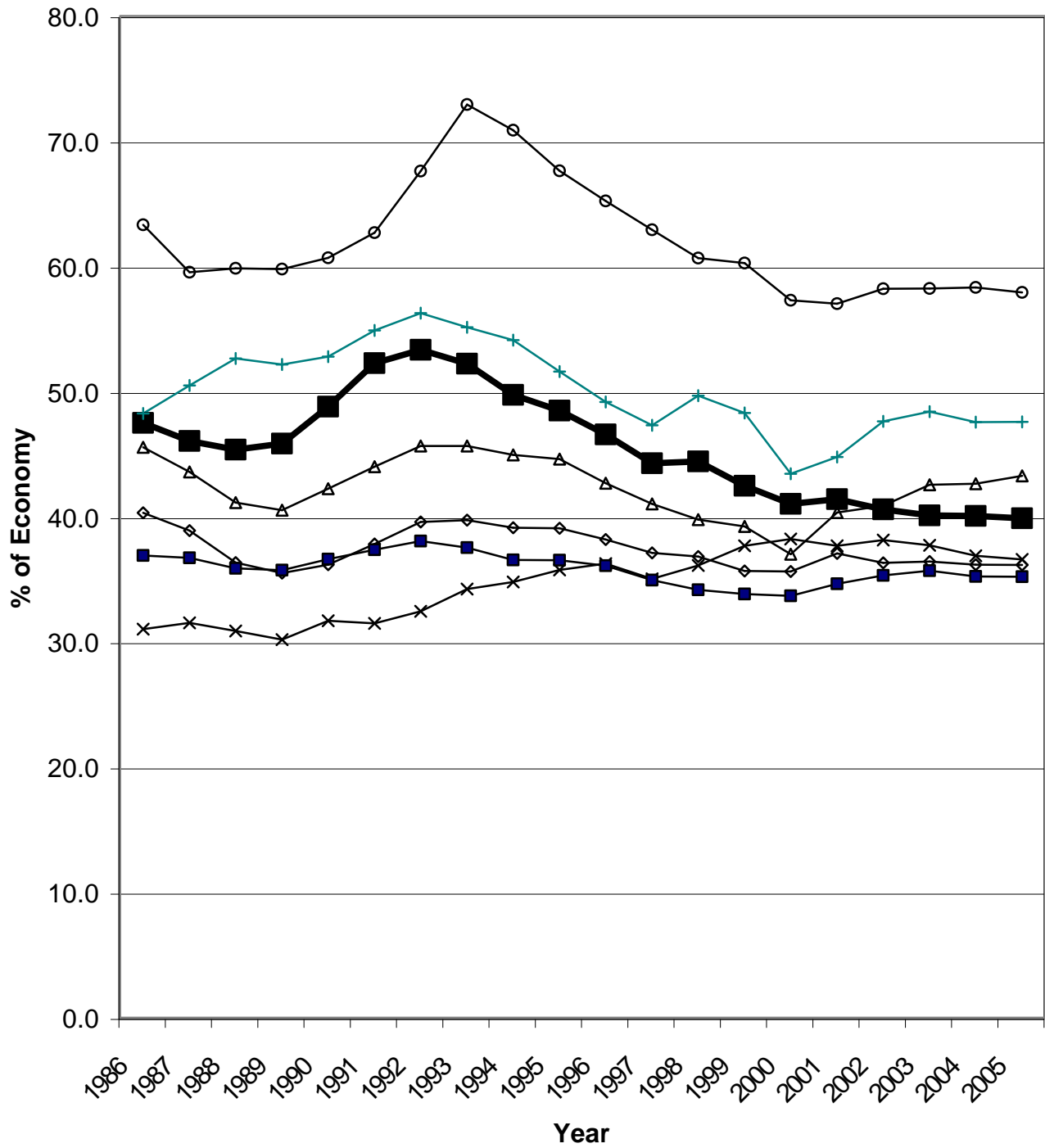
Social Spending, 1960 to 1995 (Lindert: welfare, unemp, pensions, health, housing)



—◇— Australia —■— Canada —△— UK —×— Japan —■— USA —○— Sweden —+— Norway

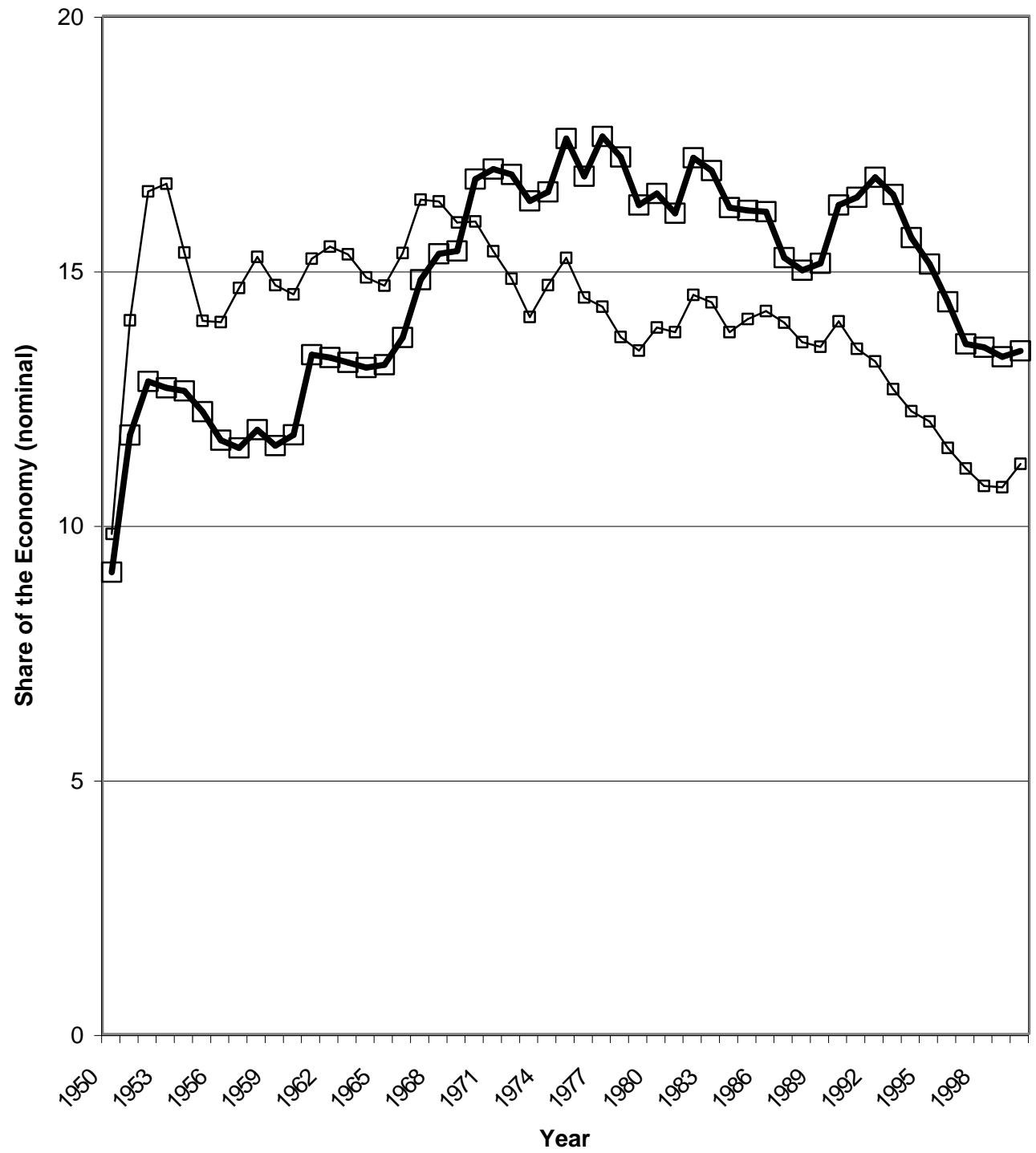
Total Government Outlays as a % of Economy

Source: OECD



Australia
 Canada
 UK
 Japan
 USA
 Sweden
 Norway

Government Production as a Share of the Economy:
Source: Penn World Tables



—■—"Canada" —■—"USA"