

Figure Ground with Adobe Illustrator

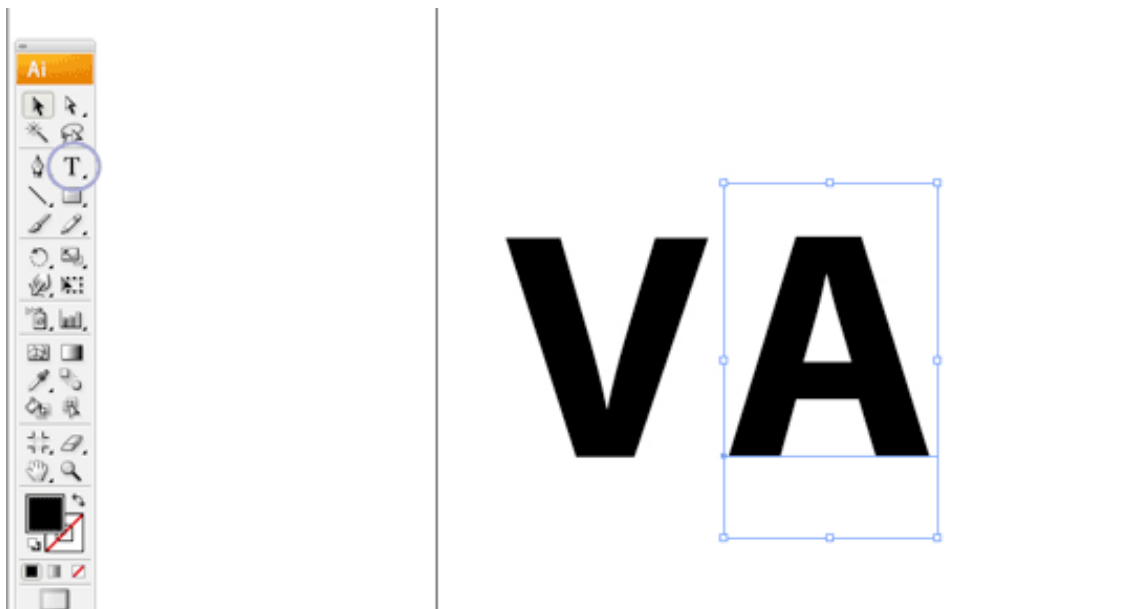
Illustrator instructions modified from: <http://vector-art.blogspot.com/2008/06/figure-ground-with-adobe-illustrator-7993.html>

Activity instructions modified from: <http://www.gdbasics.com/>

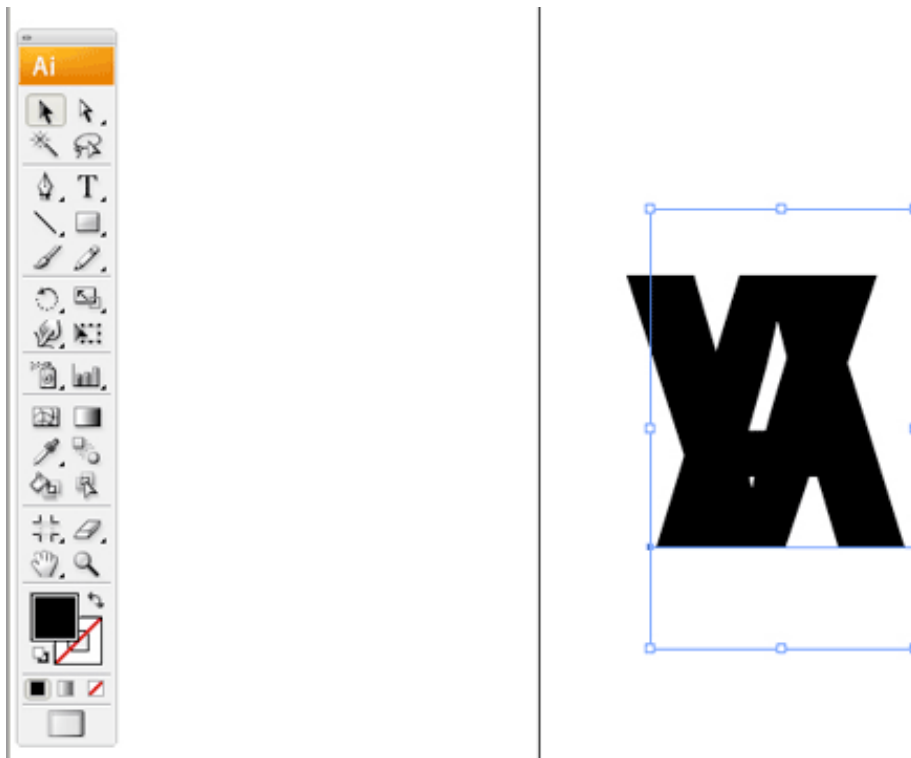
Introduction:

In this tutorial you will learn how to create a simple figure - ground vector. All you need to do is to overlap letterform elements and create the spatial relationship between them by using one of the shape modes in Adobe Illustrator. For example, I will use the letterforms "V" and "A".

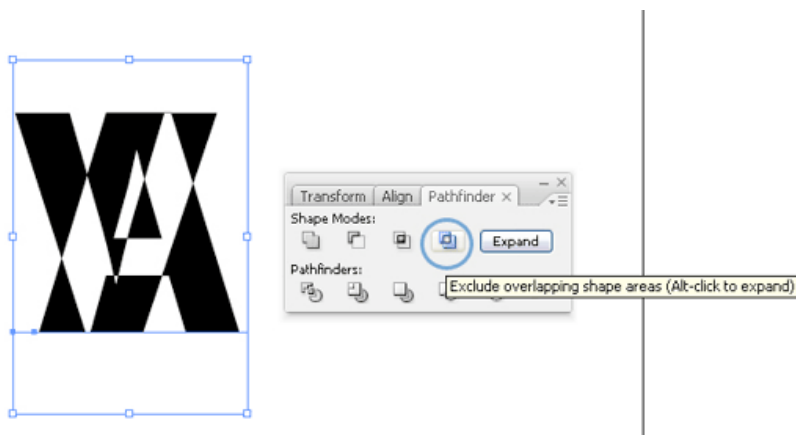
- 1) First, download template file from http://www.sfu.ca/~sclement/IAT102/lectures/labs/Illustrator-template_wk1.ai.
- 2) Select the type tool, choose a typeface, and black for color, then type the first Letterform.
- 3) Select the "Selection Tool" (V on keyboard), select letter.
- 4) Go to "Type" > Create outlines.
- 5) Do this again with a second letter.



- Using the selection tool select the second letterform (in our case "A"). Move the "A" over the "V" in a way that parts of the letter forms overlap.



- Open the pathfinder palette - Window>Pathfinder or Ctrl+Shift+F9 / Command+Shift+F9 (Mac).
- Select both letterforms with the Selection Tool and then click on "Exclude Overlapping Shape Areas".



- To save. Go to > File > Save as> select .pdf from the drop down menu> save.
- Do 6 different versions in total.

Hints:

1. If your letters are above the border, you have to change how objects are layered in the “Layers panel”. (Layer Panel overview: http://help.adobe.com/en_US/Illustrator/14.0/WS714a382cdf7d304e7e07d0100196cbc5f-62d6a.html) You may want to trim a letter. To do so you will need to cut it using the scissor tool (select C on your keyboard) and then select the area you have cut using the Direct Selection Tool (select A on your keyboard). You then select and delete the part you do not want. This is a more advanced Illustrator technique and will require more practice if you are new to Illustrator. Scissor tool http://help.adobe.com/en_US/indesign/cs/using/WS4CF07C24-2A3A-4b8a-B365-0730F3C825B0a.html