

Correlated evolution of maternally derived yolk testosterone and early developmental traits in passerine birds

K. B. Gorman* and T. D. Williams

Department of Biological Sciences, Simon Fraser University, 8888 University Drive, Burnaby, British Columbia, Canada V5A 1S6

*Author for correspondence (kgorman@sfu.ca)

Recent studies on hormone-mediated maternal effects in birds have highlighted the influence of variable maternal yolk androgen concentration on offspring phenotype, particularly in terms of early development. If genetic differences between laying females regulate variation in yolk hormone concentration, then this physiological maternal effect is an indirect genetic effect which can provide a basis for the co-evolution of maternal and offspring phenotypes. Thus, we investigated the evolutionary associations between maternally derived yolk testosterone (T) and early developmental traits in passerine birds via a comparative, phylogenetic analysis. Our results from species-correlation and independent contrasts analyses provide convergent evidence for the correlated evolution of maternal yolk T concentration and length of the prenatal developmental period in passerines. Here, we show these traits are significantly negatively associated (species-correlation: $p < 0.001$, $r^2 = 0.85$; independent contrasts: $p = 0.005$). Our results highlight the need for more studies investigating the role of yolk hormones in evolutionary processes concerning maternal effects.

Keywords: maternal effects; yolk hormones; testosterone; early development; independent contrasts

1. INTRODUCTION

Recent work on maternally derived yolk hormones in avian systems has made an important contribution to our understanding of the physiological mechanisms by which mothers influence their offspring's phenotype (i.e. maternal effects; Schwabl 1993, 1996b; Lipar & Ketterson 2000; Sockman & Schwabl 2000). During the rapid yolk development phase of oogenesis, steroid hormones of maternal origin are transferred from females to the yolk of their developing ovarian follicles (Schwabl 1993, 1997a; Adkins-Regan *et al.* 1995; Hackl *et al.* 2003). This hormonal milieu provided by adult females may modulate offspring phenotype as exposure to hormones during early ontogeny can have considerable organizational effects in terms of development and behaviour (Clark & Galef 1995; Lindström 1999; Dufty *et al.* 2002).

Most avian yolk androgen studies have considered the ecological determinants, or the developmental and behavioural effects, of variation in maternal yolk hormone concentration. Many studies have reported marked intraspecific differences in yolk androgen concentration over the egg laying sequence of individuals (Schwabl *et al.* 1997; Lipar *et al.* 1999b; Lipar & Ketterson 2000; Groothuis & Schwabl 2002), as well as differences between conspecifics (Schwabl 1997b; Gil *et al.* 1999; Müller *et al.* 2002; Pilz & Smith 2004). This variation in maternal yolk androgen concentration influences early developmental and behavioural phenotypes of offspring (Schwabl 1996b; Lipar & Ketterson 2000; Eising *et al.* 2001; Eising & Groothuis 2003), potentially affecting offspring survival or reproductive success (e.g. Sockman & Schwabl 2000; Eising & Groothuis 2003; Pilz *et al.* 2004). Therefore, such physiological maternal effects can have significant evolutionary consequences. However, the current literature has neglected linking yolk androgens to evolutionary processes concerning maternal effects.

Theoretically, if genetic differences between laying females regulate variation in maternal yolk hormone concentration, then this physiological maternal effect is an indirect genetic effect (IGE; Wolf *et al.* 1998) which can provide a basis for the co-evolution of maternal and offspring phenotypes (Wade 1998; Wolf & Brodie 1998; Wolf 2000). Thus, we conducted a comparative, phylogenetic analysis using species-correlation and independent contrasts analyses to test for evolutionary associations between maternally derived yolk testosterone (T) concentration and early developmental traits of offspring including length of the prenatal and postnatal developmental periods, as well as postnatal developmental growth rate in the Passeriformes. We predicted that higher yolk T concentrations should be associated with shorter developmental periods and higher growth rates (*sensu* Eising *et al.* 2001; Eising & Groothuis 2003).

2. MATERIAL AND METHODS

(a) Data collection

We compiled data from the published literature on species clutch mean yolk T concentration for all available passerine species (figure 1). Our analyses were restricted to the Passeriformes in order to address the statistical concerns of taxon sampling in comparative studies (Ackerly 2000). We focused on yolk T in this study as concentration data were available for 11 passerine species. Concentration data for other yolk androgens such as androstenedione (A4) and 5 α -dihydrotestosterone (DHT) were available for only a small number of passerines (i.e. 4 and 5 species, respectively), thus these data were excluded from our analyses. Species yolk T values were calculated by either using the reported clutch mean concentration, or calculating the clutch mean concentration from reported data over the egg laying sequence. When possible, multiple clutch mean values for a single species were used to calculate an overall value for that species (figure 1). Data from experimental studies were always obtained from control samples. Data on developmental traits including length of the prenatal (i.e. number of days of incubation) and postnatal (i.e. number of days between hatch and fledge) developmental periods, as well as postnatal developmental growth rate (i.e. grams of mass gained per day, controlling for hatch mass) were obtained from general references (Cramp 1983; Poole *et al.* 1992–2002; Zann 1996). Yolk T concentration data, as well as length of the prenatal and postnatal developmental period data, were log transformed for normality (Shapiro–Wilk test).

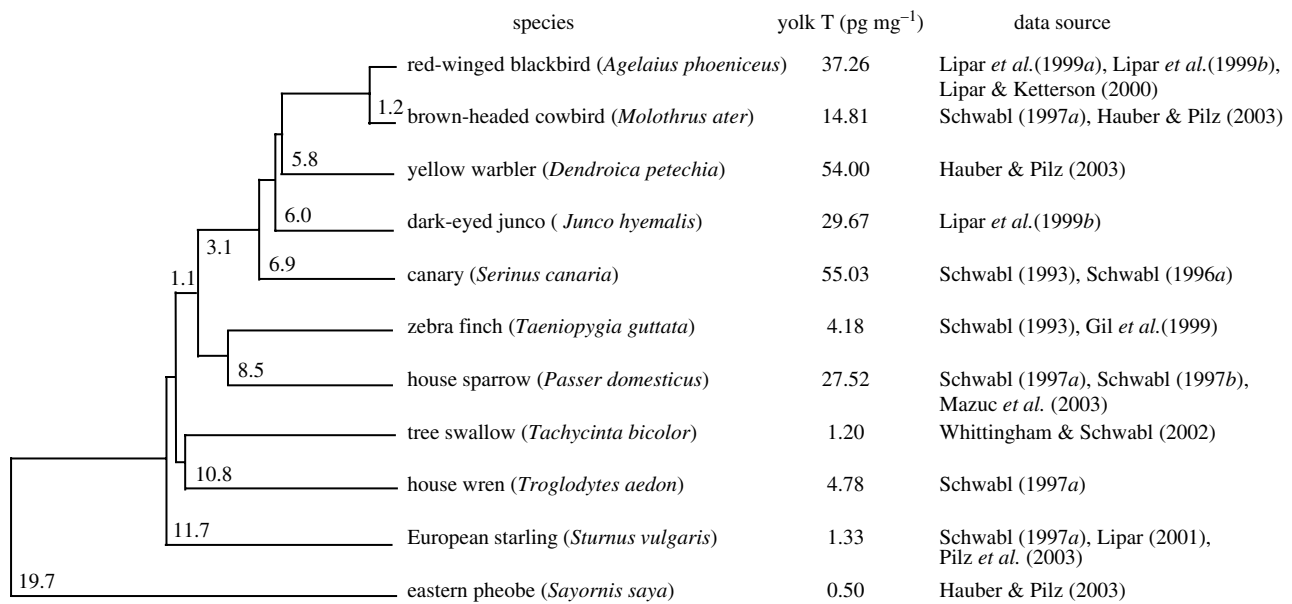


Figure 1. DNA–DNA hybridization phylogeny for all 11 passerine species including clutch mean yolk T concentration and associated data sources. Branch lengths after Sibley & Ahlquist (1990). Phylogenetic tree produced using TREEVIEW (Page 1996).

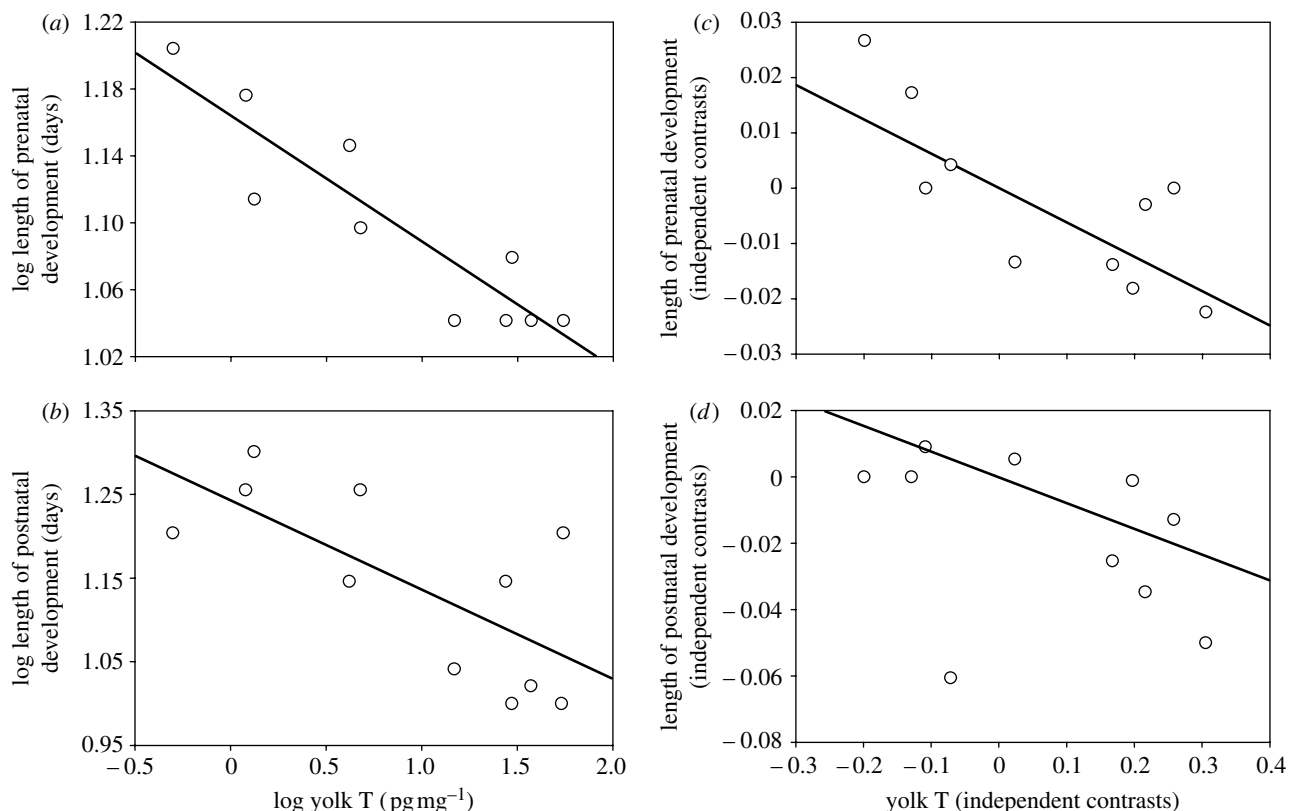


Figure 2. Species-correlations between log yolk T concentration and log (a) length of the prenatal and (b) postnatal developmental periods, and independent contrasts relationships for yolk T concentration and (c) length of the prenatal and (d) postnatal developmental periods.

(b) Data analysis

We used species-correlation and independent contrasts analyses to test for evolutionary associations between maternally derived yolk T concentration and offspring early developmental traits. Species-correlation analyses assume inter-specific data are phylogenetically independent (Martins 2000) and describe current associations between extant taxa (Price 1997). Independent contrasts analyses incorporate phylogenetic information into comparative data to control for the statistical problems associated with species-relatedness (Felsenstein 1985; Martins 2000), and are therefore more conservative. We report the results of both analyses as similarity in

results is suggestive of robust relationships, while discrepancies may be biologically relevant (Ricklefs & Stark 1996; Price 1997).

We derived phylogenetic relationships from the DNA–DNA hybridization phylogeny reported by Sibley & Ahlquist (1990; figure 1) for use in independent contrasts analyses. COMPARE software 4.5 (Martins 2003) was used to produce independent contrasts of maternal yolk T and offspring early developmental trait data. Adequate standardization of independent contrasts was tested by regression of the absolute value of the contrasts by their standard deviation (Garland *et al.* 1992). All contrasts were adequately standardized for all analyses ($p > 0.05$). Species-correlation and

independent contrasts analyses were analysed using linear regression models in JMP 4.0 (2001). Independent contrasts analyses forced the regression line through the origin (Garland *et al.* 1992).

3. RESULTS

(a) Species-correlation analyses

Linear regression analyses of species yolk T concentration and length of the prenatal developmental period indicated these traits were significantly negatively related ($p < 0.001$; $r^2 = 0.85$; figure 2a). Furthermore, species yolk T concentration was significantly negatively associated with length of the postnatal developmental period ($p = 0.02$; $r^2 = 0.49$; figure 2b). There was no relationship between species yolk T concentration and postnatal developmental growth rate ($p = 0.45$; $r^2 = 0.08$).

(b) Independent contrasts analyses

Linear regression analyses of independent contrasts for species yolk T concentration and length of the prenatal developmental period resulted in a significant negative relationship ($p = 0.005$; figure 2c). However, length of the postnatal developmental period (figure 2d) and postnatal developmental growth rate were independent of species yolk T concentration ($p > 0.10$ in both cases).

4. DISCUSSION

We have demonstrated a significant evolutionary association between maternally derived yolk T concentration and length of the prenatal developmental period in passerine birds, corroborated by species-correlation and phylogenetically independent contrasts analyses. Species-correlation analysis also indicated an evolutionary association between yolk T concentration and length of the postnatal developmental period, although this relationship was not supported by the more conservative result from independent contrasts analysis.

In our comparative study, higher yolk T concentration was associated with shorter prenatal development. Lipar & Ketterson (2000) showed that treatment of egg yolk with T in red-winged blackbirds (*Agelaius phoeniceus*) resulted in an increase in the relative mass of the young's hatching muscle, which might be associated with more rapid hatching (see also Lipar 2001). Black-headed gull (*Larus ridibundus*) embryos hatching from eggs with experimentally elevated yolk androgen concentration showed a decrease in the length of prenatal development; young hatched half a day earlier in experimental eggs compared with control eggs (Eising *et al.* 2001; Eising & Groothuis 2003). Thus, our results corroborate that which has been shown in studies examining the intraspecific effects of variation in yolk T concentration on offspring development, and further demonstrate the correlated evolution of these maternal and offspring traits. Genetic differences in hormonal traits, such as maternal yolk hormone concentration and offspring developmental response to yolk hormones (*sensu* Ketterson & Nolan 1999), can provide a basis for the co-evolution of maternal and offspring phenotypes via interactions between these genomes such as

genotype \times genotype epistasis (Wade 1998; Wolf & Brodie 1998; Wolf 2000). Other yolk androgens of maternal origin, such as A4 and DHT, may also show correlated evolution with avian developmental phenotypes. These relationships should be examined as more interspecific yolk hormone data become available.

Our results highlight the need for further investigations of the role of maternal yolk hormones in evolutionary processes concerning maternal effects. In theory, yolk hormones as IGEs can have important implications for the direction and rate of short-term trait evolution (*sensu* Wolf *et al.* 1998) as the sign of the covariance between direct and maternal additive genetic effects drives the response to selection (Kirkpatrick & Lande 1989; Wolf *et al.* 1998). An appreciation for the evolutionary dynamics of maternal effects systems is important for better understanding the transgenerational relationships between maternal physiology and offspring phenotype.

We thank B. J. Crespi, P. Nosil and members of the Williams Lab (SFU evo-eco physiology research group) for comments and valuable suggestions on earlier versions of this manuscript. E. P. Martins and K. G. Salvante provided help with independent contrasts analyses.

- Ackerly, D. D. 2000 Taxon sampling, correlated evolution, and independent contrasts. *Evolution* **54**, 1480–1492.
- Adkins-Regan, E., Ottinger, M. A. & Park, J. 1995 Maternal transfer of estradiol to egg yolks alters sexual differentiation of avian offspring. *J. Exp. Zool.* **271**, 466–470.
- Clark, M. M. & Galef Jr, B. G. 1995 Prenatal influences on reproductive life history strategies. *Trends Ecol. Evol.* **10**, 151–153.
- Cramp, S. (ed) 1983 *Handbook of the birds of Europe, the Middle East, and North Africa*, pp. 528–536. Oxford University Press.
- Duffy Jr, A. M., Clobert, J. & Møller, A. P. 2002 Hormones, developmental plasticity and adaptation. *Trends Ecol. Evol.* **17**, 190–196.
- Eising, C. M. & Groothuis, T. G. G. 2003 Yolk androgens and begging behavior in black-headed gull chicks: an experimental field study. *Anim. Behav.* **66**, 1027–1034.
- Eising, C. M., Eikenaar, C., Schwabl, H. & Groothuis, T. G. G. 2001 Maternal androgens in black-headed gull (*Larus ridibundus*) eggs: consequences for chick development. *Proc. R. Soc. B* **268**, 839–846. (doi:10.1098/rspb.2001.1594.)
- Felsenstein, J. 1985 Phylogenies and the comparative method. *Am. Nat.* **125**, 1–15.
- Garland Jr, T., Harvey, P. H. & Ives, A. R. 1992 Procedures for the analysis of comparative data using phylogenetically independent contrasts. *Syst. Biol.* **41**, 18–32.
- Gil, D., Graves, J., Hazon, N. & Wells, A. 1999 Male attractiveness and differential testosterone investment in zebra finch eggs. *Science* **286**, 126–128. (doi:10.1126/science.286.5437.126.)
- Groothuis, T. G. G. & Schwabl, H. 2002 Determinants of within- and among-clutch variation in levels of maternal hormones in black-headed gull eggs. *Funct. Ecol.* **16**, 281–289.

- Hackl, R., Bromundt, V., Daisley, J., Kotrschal, K. & Möstl, E. 2003 Distribution and origin of steroid hormones in the yolk of Japanese quail eggs (*Coturnix coturnix japonica*). *J. Comp. Physiol. B* **173**, 327–331.
- Hauber, M. E. & Pilz, K. M. 2003 Yolk testosterone levels are not consistently higher in the eggs of obligate brood parasites than their hosts. *Am. Midl. Nat.* **149**, 354–362.
- JMP 4.0 2001 *JMP user's guide, version 4*. Cary, NC: SAS Institute.
- Ketterson, E. D. & Nolan Jr, V. 1999 Adaptation, exaptation, and constraint: a hormonal perspective. *Am. Nat.* **154**, S4–S25.
- Kirkpatrick, M. & Lande, R. 1989 The evolution of maternal characters. *Evolution* **43**, 485–503.
- Lindström, J. 1999 Early development and fitness in birds and mammals. *Trends Ecol. Evol.* **14**, 343–348.
- Lipar, J. L. 2001 Yolk steroids and the development of the hatching muscle in nestling European starlings. *J. Avian Biol.* **32**, 231–238.
- Lipar, J. L. & Ketterson, E. D. 2000 Maternally derived yolk testosterone enhances the development of the hatching muscle in the red-winged blackbird *Aegelaius phoeniceus*. *Proc. R. Soc. B* **267**, 2005–2010. (doi:10.1098/rspb.2000.1242.)
- Lipar, J. L., Ketterson, E. D. & Nolan Jr, V. 1999a Intraclutch variation in testosterone content of red-winged blackbird eggs. *Auk* **116**, 231–235.
- Lipar, J. L., Ketterson, E. D., Nolan Jr, V. & Casto, J. M. 1999b Egg yolk layers vary in the concentration of steroid hormones in two avian species. *Gen. Comp. Endocrinol.* **115**, 220–227.
- Martins, E. P. 2000 Adaptation and the comparative method. *Trends Ecol. Evol.* **15**, 296–299.
- Martins, E. P. 2003 COMPARE, version 4.5. Computer programs for the statistical analysis of comparative data. Distributed by the author at <http://compare.bio.indiana.edu/>. Bloomington, IN: Department of Biology, Indiana University.
- Mazuc, J., Chastel, O. & Sorci, G. 2003 No evidence for differential maternal allocation to offspring in the house sparrow (*Passer domesticus*). *Behav. Ecol.* **14**, 340–346.
- Müller, W., Eising, C. M., Dijkstra, C. & Groothuis, T. G. G. 2002 Sex differences in yolk hormones depend on maternal status in leghorn chickens (*Gallus gallus domesticus*). *Proc. R. Soc. B* **269**, 2249–2255. (doi:10.1098/rspb.2002.2159.)
- Page, R. D. M. 1996 TREEVIEW: an application to display phylogenetic trees on personal computers. *Comput. Appl. Biosci.* **12**, 357–358.
- Pilz, K. M. & Smith, H. G. 2004 Egg yolk androgen levels increase with breeding density in the European starling, *Sturnus vulgaris*. *Funct. Ecol.* **18**, 58–66.
- Pilz, K. M., Smith, H. G., Sandell, M. I. & Schwabl, H. 2003 Interfemale variation in egg yolk androgen allocation in the European starling: do high-quality females invest more? *Anim. Behav.* **65**, 841–850.
- Pilz, K. M., Quiroga, M., Schwabl, H. & Adkins-Regan, E. 2004 European starling chicks benefit from high yolk testosterone levels during a drought year. *Horm. Behav.* **46**, 179–192.
- Poole, A. F., Stettenheim, P. & Gill, F. B. (eds) 1992–2002 *The birds of North America: life histories for the 21st century*. No's 11, 12, 47, 48, 94, 184, 380, 454, 716. Philadelphia/Washington, DC: The Academy of Natural Sciences/The American Ornithologists' Union.
- Price, T. 1997 Correlated evolution and independent contrasts. *Phil. Trans. R. Soc. B* **352**, 519–529. (doi:10.1098/rstb.1997.0036.)
- Ricklefs, R. E. & Stark, J. M. 1996 Applications of phylogenetically independent contrasts: a mixed progress report. *Oikos* **77**, 167–172.
- Schwabl, H. 1993 Yolk is a source of maternal testosterone for developing birds. *Proc. Natl Acad. Sci. USA* **90**, 11 446–11 450.
- Schwabl, H. 1996a Environment modifies the testosterone levels of a female bird and its eggs. *J. Exp. Zool.* **276**, 157–163.
- Schwabl, H. 1996b Maternal testosterone in the avian egg enhances postnatal growth. *Comp. Biochem. Physiol.* **114**, 271–276.
- Schwabl, H. 1997a Maternal steroid hormones in the egg. In *Perspectives in avian endocrinology* (ed. S. Harvey & R. J. Etches), pp. 3–13. Bristol: Journal of Endocrinology Limited.
- Schwabl, H. 1997b The contents of maternal testosterone in house sparrow *Passer domesticus* eggs vary with breeding conditions. *Naturwissenschaften* **84**, 406–408.
- Schwabl, H., Mock, D. W. & Gieg, J. A. 1997 A hormonal mechanism for parental favouritism. *Nature* **386**, 231. (doi:10.1038/386231a0.)
- Sibley, C. G. & Ahlquist, J. E. 1990 *Phylogeny and classification of birds, a study in molecular evolution*. New Haven: Yale University Press.
- Sockman, K. W. & Schwabl, H. 2000 Yolk androgens reduce offspring survival. *Proc. R. Soc. B* **267**, 1451–1456. (doi:10.1098/rspb.2000.1163.)
- Wade, M. J. 1998 The evolutionary genetics of maternal effects. In *Maternal effects as adaptations* (ed. T. A. Mousseau & C. Fox), pp. 5–21. New York: Oxford University Press.
- Whittingham, L. A. & Schwabl, H. 2002 Maternal testosterone in tree swallow eggs varies with female aggression. *Anim. Behav.* **63**, 63–67.
- Wolf, J. B. 2000 Gene interactions from maternal effects. *Evolution* **54**, 1882–1898.
- Wolf, J. B. & Brodie III, E. D. 1998 The coadaptation of parental and offspring characters. *Evolution* **52**, 299–308.
- Wolf, J. B., Brodie III, E. D., Cheverud, J. M., Moore, A. J. & Wade, M. J. 1998 Evolutionary consequences of indirect genetic effects. *Trends Ecol. Evol.* **13**, 64–69.
- Zann, R. A. 1996 *The zebra finch: a synthesis of field and laboratory studies*. Oxford University Press.