



8888 University Drive, MBC | 2000 TEL: 778.782.3600
Burnaby, BC
Canada V5A 1S6

znaqvi@sfu.ca
www.sfu.ca/irp

MEMORANDUM

ATTENTION:	Senate	DATE:	August 20, 2024
FROM:	Zareen Naqvi, Institutional Research and Planning (IRP)	PAGES:	1 of 1
RE:	IRP Reports for Information		

At a meeting of Senate held on March 7, 2011, Senator Paul Percival requested that relevant IRP reports, such as the annual Grades Report, be brought to Senate for information.

Attached are three reports for information:

- **2023/24 Grades Report:** This report is prepared once a year and it summarizes course grades at the University over a ten-year period. The 2023/24 Grades Report covers the period from 2014/15 to 2023/24. Attached is the Summary Report. More detailed information is available on IRP's website: <https://www.sfu.ca/irp/students/grades-report.html>
- **2023 Undergraduate Student Survey (UGSS) Report:** The UGSS survey is conducted every fall term. The attached report presents a summary of key findings from the Fall 2023 survey. Topics covered are selected in consultation with faculties, Student Services and other administrative units of the University. This year's topics included: course availability, credential planning and completion, teaching and curriculum, services, and university culture and environment. The report can also be accessed on IRP's website: <http://www.sfu.ca/irp/surveys/ugss.html>
- **Effect of COVID/Grading Policies on Grades/Performance:** At the September 2023 meeting of Senate, it was requested that IRP provide some data related to the preparedness of incoming undergraduate students in COVID vs. pre-COVID times, as well as the effect of various recent grading policies on undergraduate course grades. This report was prepared to meet that request.

If you have trouble accessing files on IRP's website, please contact askIRP@sfu.ca.

Enclosure



INSTITUTIONAL RESEARCH
AND PLANNING

Fall 2023 Undergraduate Student Survey: Report of Findings

Prepared by
Janice Wiebe, Analyst
Helen Jung, Analyst
Institutional Research and Planning
Summer 2024

About the Survey

The Undergraduate Student Survey has been conducted at Simon Fraser University every fall term since 1992¹ (except in 2002). This annual survey provides essential feedback on the academic experiences and concerns of our undergraduate students. Every year, the survey asks students about their experiences with course availability and credential planning and completion at SFU, as well as a range of other topics that change from year to year. This year's survey focused on five main topics:

- course availability,
- credential planning and completion,
- teaching and curriculum,
- services, and
- university culture and environment.

The results of the 2023 survey may have been impacted by a number of activities that were ongoing at the time the survey was administered. These include, but are not limited to, the ongoing Teaching Support Staff Union (TSSU) strike action and the 2023 Tuition Consultation Survey. TSSU strike actions were ongoing from the beginning of the fall term and peaked before the UGSS launched. While TSSU strike activity ceased October 19, 2023, a few days after the UGSS launch, the preceding strike actions may have had a profound influence on students' opinions while participating in the survey. Furthermore, the 2023 Tuition Consultation Survey, which asked students for their opinions of a proposed tuition increase, launched immediately prior to the UGSS. It is unknown how large an impact these and other factors may have played, but caution should be exercised when comparing results from previous years.

A total of 5,519 students participated in this year's survey, yielding an overall response rate of 21.5%, which is lower than last year's response rate of 24.2%. Highlights of the survey results are presented here. Statistics provided in this summary are estimates based on survey respondents. Assuming that the sample is representative, proportions calculated on all respondents are accurate within $\pm 1.2\%^2$, 19 times out of 20.

Profile of Respondents

There are several noteworthy differences between the survey respondents and the population of all undergraduate students registered at SFU in the Fall 2023 term:

- On average, the survey respondents have a higher cumulative grade point average (CGPA). Among those with an available CGPA:
 - 54% of survey respondents have a CGPA ≥ 3.00 , compared to 47% of the student body.
- A few groups are over-represented in the sample:
 - women (63% vs. 52% among all undergraduate students, excluding those reported under "Not reported"),
 - students under 21 years of age (56% vs. 48% in the student population), and
 - new students (28% vs. 21% in the student population).

¹ It should be noted that a change in methodology, from in-class paper survey to online survey, was instituted in 2006. The paper surveys, administered to a random sample of classes, resulted in a "captive audience" and high response rates. By contrast, the online surveys, usually administered to the entire SFU undergraduate student population, result in larger samples but lower response rates.

² Note that this margin of error does not control for multiple comparisons. Survey research should be considered exploratory, and definitive conclusions must be drawn with caution.

- A few groups are under-represented in the sample:
 - BC college transfer and associate degree students (26% vs. 22% of the sample) and
 - part-time³ students (part-time students comprise 12% of the student population, but only 9% of the sample).

Due to these and other minor differences, it is possible that the responses of survey participants are **not completely representative** of the population of all undergraduate students. Readers wishing to apply these results more broadly should bear that in mind.

Table 1: Profile of Survey Respondents

<p>Indigenous People of Canada: 3% of respondents were Indigenous people of Canada (First Nations, Métis, or Inuit – either status or non-status).</p> <p>Age: The average age of survey respondents was 21 years.</p> <p>Basis of Admission: 70% of respondents were admitted to SFU from high school, 25% transferred from a college or university or had a BC Associate Degree, 2% were degree holders, 1% were admitted as mature students, and 2% had another basis of admission.</p> <p>Co-op: 21% were in a co-op program.</p> <p>Course Location: 85% of respondents were taking courses at SFU's Burnaby campus in Fall 2023, 19% at the Surrey campus, 7% at the Vancouver campus, and 23% through Distance Education/Online. (Students may take classes in more than one location.)</p> <p>Credential: 96% were pursuing a Bachelor's Degree, 4% were pursuing a Certificate, 3% were in the Professional Development Program, less than 1% were pursuing a Post Baccalaureate Diploma, and 1% were pursuing another credential or no credential. (Students may pursue more than one credential.)</p> <p>Cumulative Grade Point Average: 38% had a CGPA of 3.00 or above; 30% had a CGPA between 2.00 and 2.99; 3% were below 2.00; the remainder had no CGPA (new, or no courses taken towards CGPA).</p> <p>Declared Status: 71% of respondents had declared a major and/or minor.</p>	<p>Employment Status: 55% of respondents were employed at the time of the survey; of these, 30% worked 20 or more hours per week.</p> <p>Faculty: 34% of respondents were in Arts and Social Sciences, 17% in Science, 14% in Applied Sciences, 13% in Beedie School of Business, 8% in Communication, Art and Technology, 7% in Health Sciences, 6% in Education, and 4% in Environment. (Students may be in more than one faculty.)</p> <p>First Term at SFU: 72% of respondents began their studies at SFU within the past three years (2021 or later). 28% were new this term.</p> <p>Full-Time/Part-Time Status: 91% of respondents were registered in at least 9 units or on a co-op term in the Fall 2023 term.</p> <p>International Students: 16% of respondents were international students (non-Canadian citizens with "Student Authorization" to study in Canada).</p> <p>Gender: 63% of the survey respondents identified as women; 37% identified as men.</p> <p>Total Units Completed (SFU + Transfer): 37% of those surveyed had completed 1 to 59 units prior to Fall 2023; 42% had completed 60 or more units; 21% had not yet completed any SFU or transfer units.</p> <p>Year Level: Based on all units completed, 54% of respondents were in their first/second year and 46% were in the third/fourth/fifth year of their program.</p>
---	--

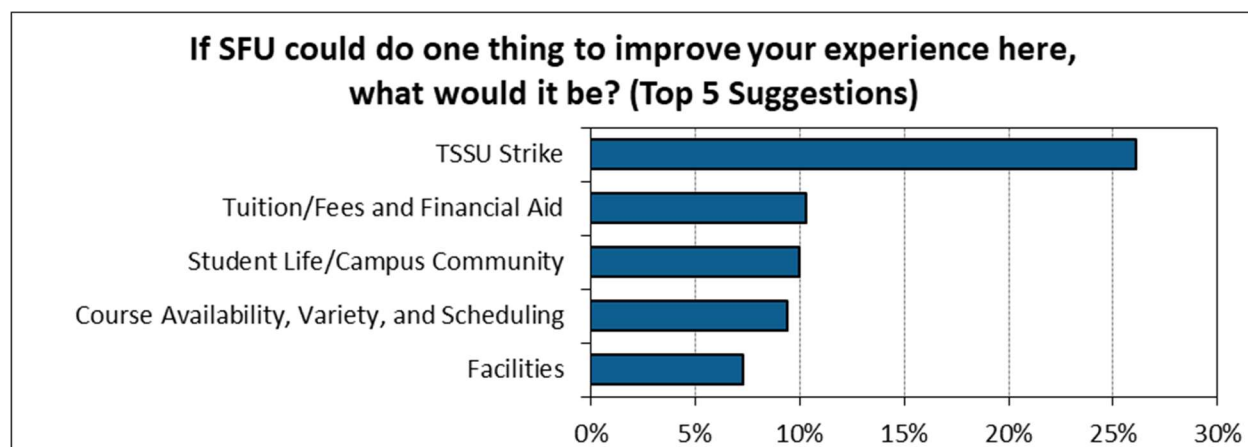
General SFU Experience

- 60% of respondents are satisfied⁴ with their overall SFU experience. This is statistically lower than last year's rate of 87%.
- When students were asked what single thing SFU could do to improve their experience here, the most common responses were:
 - dissatisfaction with the TSSU strike this year,

³ Part-time students are defined as those taking less than 9 units this term and not on a co-op work term.

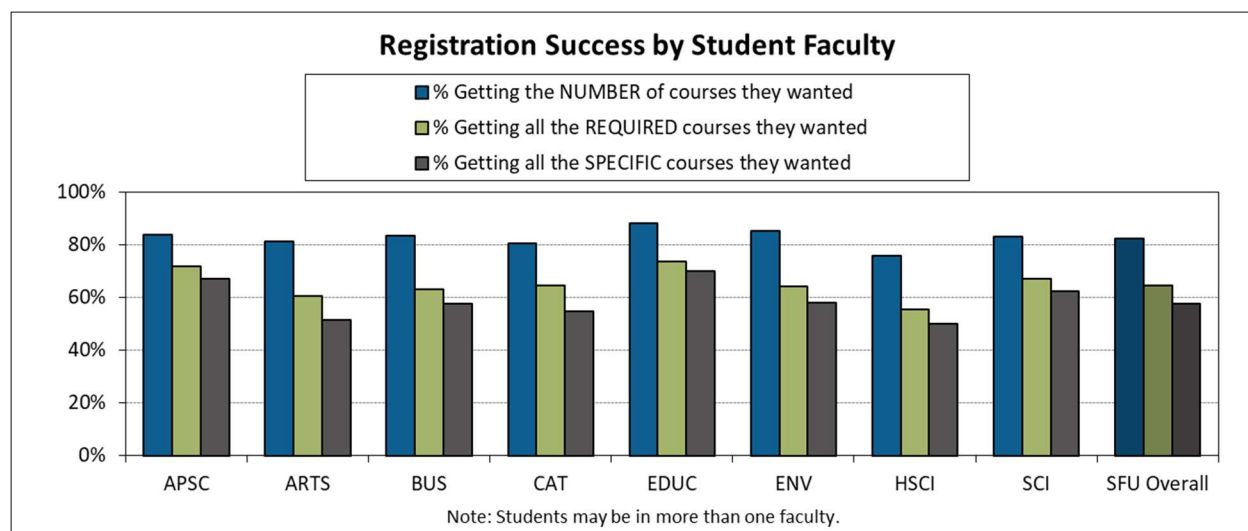
⁴ For the purposes of this report, the categories of "Very satisfied" and "Somewhat satisfied" have been combined and will be referred to as "satisfied."

- tuition/fees and financial aid, and
- student life/campus community.



Course Availability

- **NUMBER of Courses:** 82% were able to register in the number of courses they wanted to take this term. This is statistically lower than the last time this question was asked in 2021, which was 85%.
- **SPECIFIC Courses:** 58% were able to register in all of the specific courses they wanted to take this term. This is slightly lower than last year's rate of 59%, but not statistically significant.
- **REQUIRED Courses:** 64% were able to register in all of the required courses they wanted this term. This is statistically significantly lower than last year's rate of 67%.
 - Registration difficulty in required courses was most often due to:
 - full classes,
 - scheduling conflicts,
 - courses not being offered this term, and
 - reserved spaces in classes.



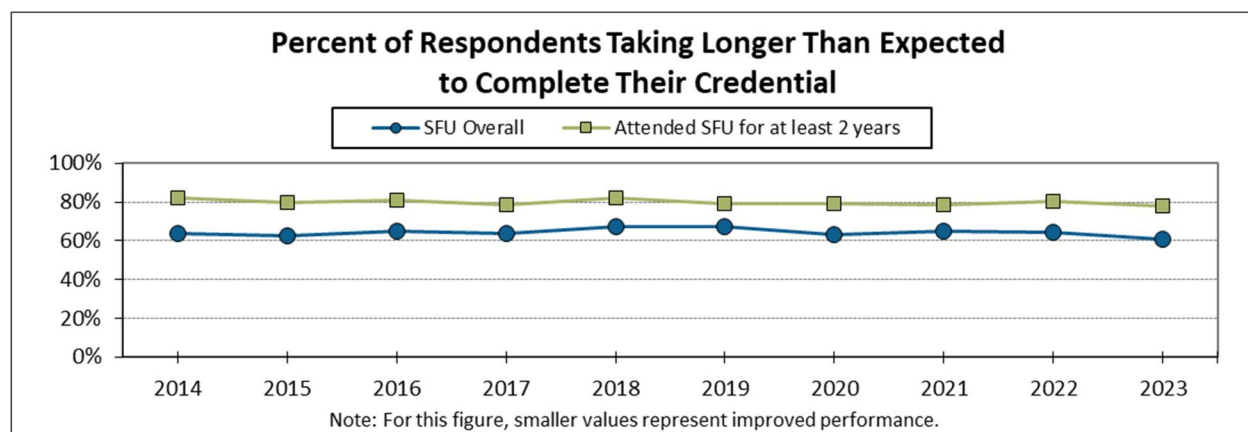
- **Satisfaction with Course Availability:**

- Satisfaction decreases as course level increases, ranging from 76% satisfaction for courses numbered XX1 to 199, down to 58% for courses numbered 400 to 499.
 - Overall satisfaction levels are statistically lower than the last time this question was asked, in 2021, for all course levels. Satisfaction with the availability of courses numbered XX1 to 199 dropped from 80% to 76%, courses numbered 200 to 299 dropped from 76% to 72%, courses numbered 300 to 399 dropped from 63% to 60%, and courses numbered 400 to 499 dropped from 61% to 58%.



Credential Completion Times

- **Delayed Credential Completion:** 61% of all respondents reported that they are taking longer than expected to complete their credential, which is statistically significantly lower than last year's rate of 64%.
 - Commonly cited reasons for taking longer include:
 - course availability issues (54%),
 - students taking a reduced course load (41%),
 - participation in co-op (37%), and
 - working in a job, outside of co-op (36%).

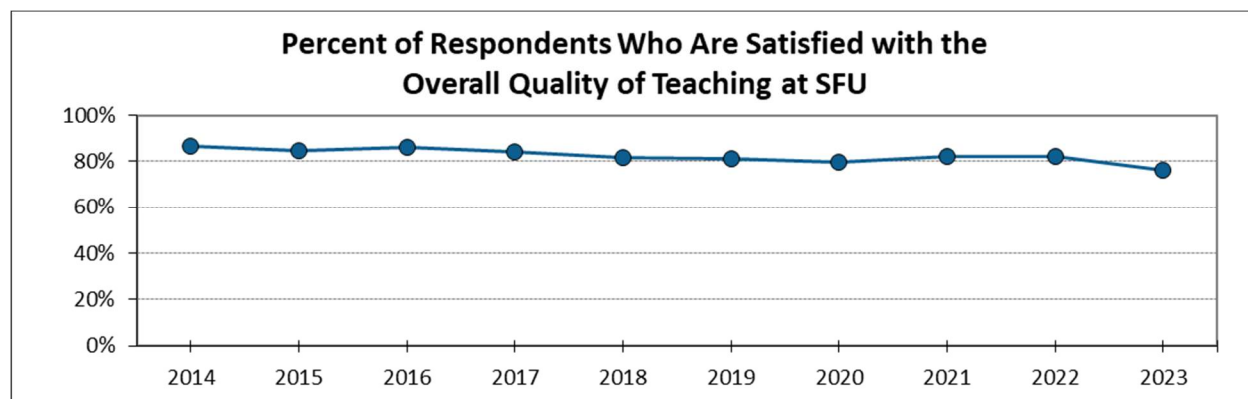


- Among respondents who have completed 60 or more units⁵, 75% reported that it is taking them longer than expected to complete their credential.

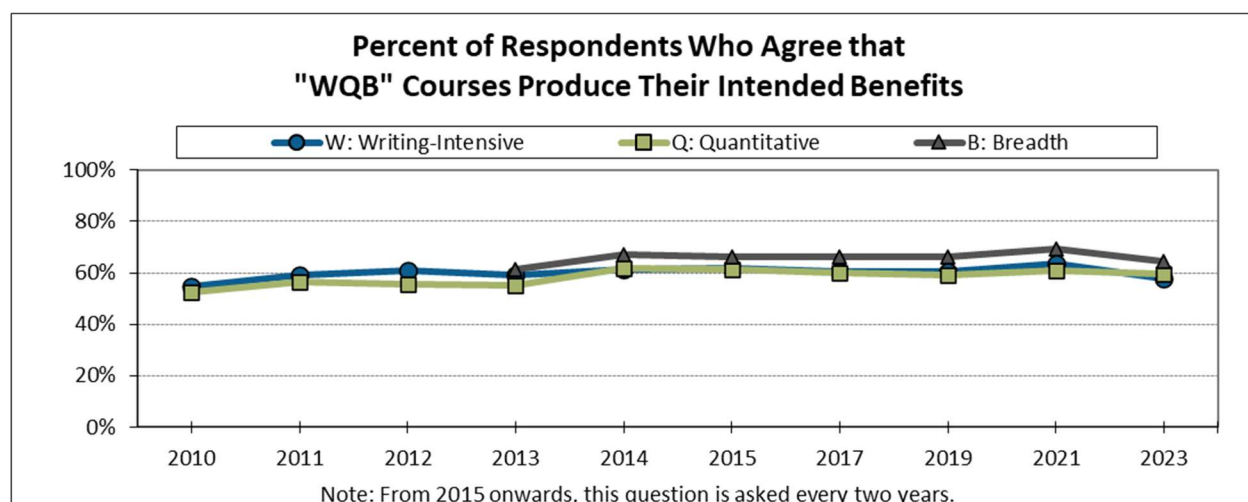
⁵ SFU and transfer units

Teaching and Curriculum

- **Quality of Teaching:** 76% of respondents are satisfied with the overall quality of teaching at SFU. This is statistically lower than last year's rate of 82%.



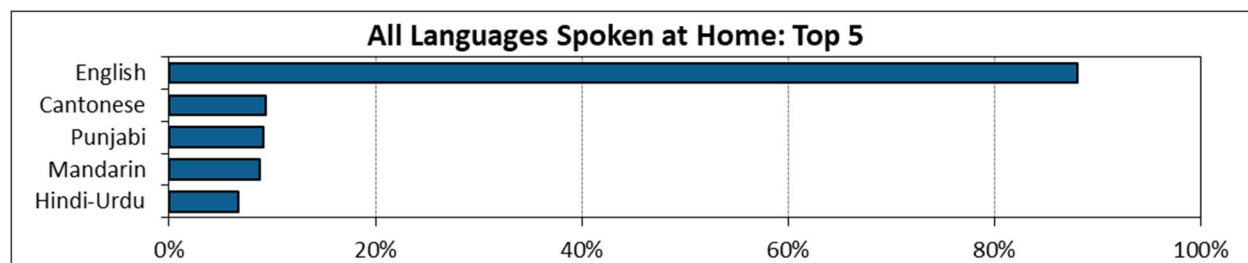
- **WQB Courses:** Over half of this year's respondents agree that these courses produce the benefits for which they were designed (58% agreement for "W" courses, 60% for "Q" courses, and 65% for "B" courses).



- **Research with Faculty Members:** 16% of respondents considered to be in fourth year or higher (based on units completed and basis of admission) said that they have worked within a faculty member's research team, separate from coursework. This is slightly higher than last year, but not statistically significant.

Language Skills

- 88% of respondents speak some English at home, with 38% speaking only English at home.
- 62% speak at least one non-English language at home, and 12% speak no English at home.
- 52% speak more than one language at home.
- 61% said that English was the first language they learned as a child and still use regularly.
- 91% speak English most often with their friends.



Services

- **Library (other than SLC):** 85% of respondents who have used this service are satisfied with it.
- **Academic Advising:** 73% of respondents who have used this service are satisfied with it.
- **Student Learning Commons (SLC):** 58% of respondents who have used this service are satisfied with it.
- **Work Integrated Learning:** 53% of respondents who have used this service are satisfied with it.
- **Financial Aid and Awards:** 51% of respondents who have used this service are satisfied with it.
- **Direct career related supports:** 43% of respondents who have used these services are satisfied with them.
- **English-Language support services:** 40% of respondents who have used these services are satisfied with them.

Health Resources

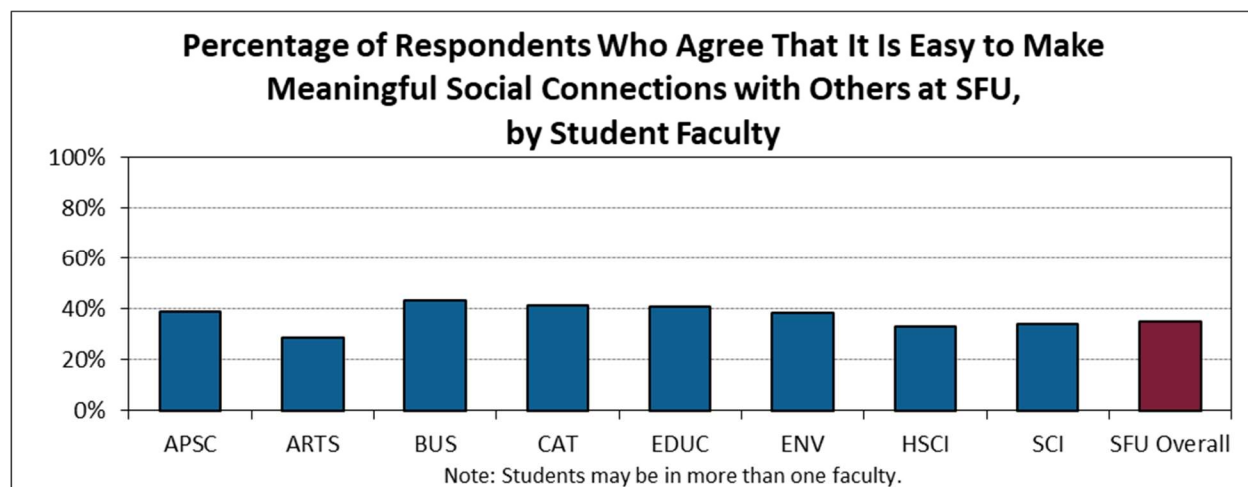
- **Physical health supports (e.g. doctors and nurses):** 86% of respondents who used these supports are satisfied with them.
- **Health and well-being outreach events and/or programs (e.g. health peers and online training):** 77% of respondents who used these supports are satisfied with them.
- **Mental health supports (e.g. counselling, groups, and drop-in programs):** 70% of respondents who used these supports are satisfied with them.
- **My SSP (Student Support Program that provides 24/7 mental health support):** 53% of respondents who used these supports are satisfied with them.

University Culture and Environment

- 38% of respondents feel that they are thriving⁶ as university students this term. This is significantly lower than last year's 51%.
- 85% agree that their mental health and well-being impacts their academic success at SFU. This is the first year that this question has been asked in this survey.
- 57% agree that their faculty provides them with a supportive environment that enhances their well-being, which is significantly lower than last year's 61%.

⁶ Thriving was defined in the question as "getting the most out of your university experience, so that you are intellectually, socially, and psychologically engaged and enjoying the university experience."

- 42% feel part of a caring community at SFU, which is significantly lower than last year's 48%.
- 41% agree that SFU is a place that positively impacts their well-being, which is significantly lower than last year's 50%.
- 35% agree that it is easy to make meaningful social connections with others at SFU, which is significantly lower than last year's 40%.

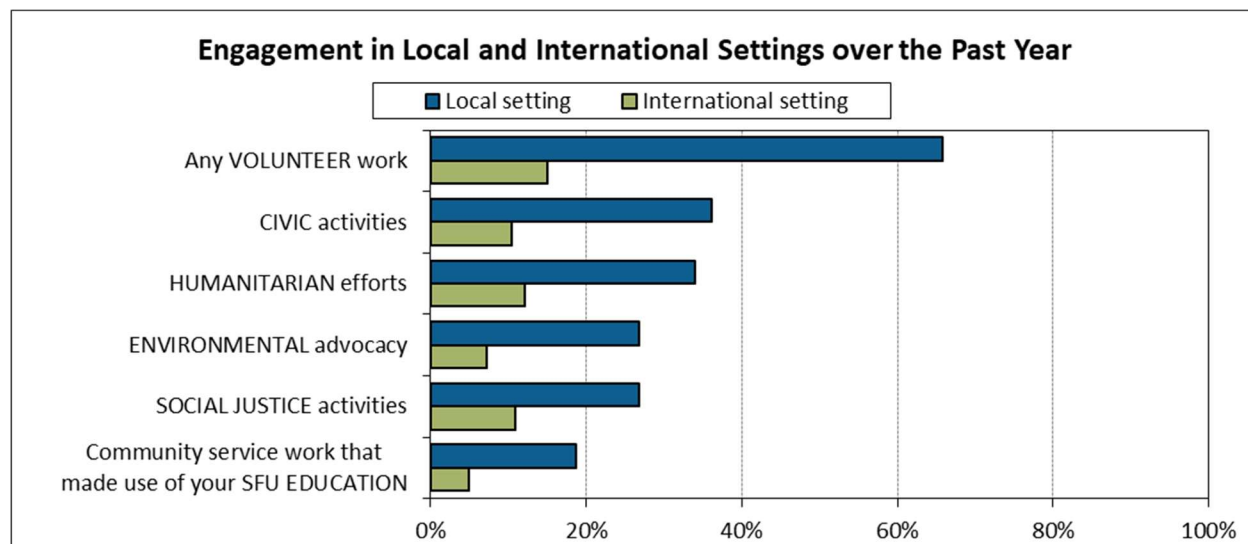


- 29% agree that SFU provides them with a supportive environment that reduces unnecessary personal and academic stress, which is significantly lower than last year's 40%.

General

- **Employment:**
 - 55% of respondents are currently employed or self-employed. Among these:
 - 9% work 30 hours or more per week in a paid job,
 - 64% work 10 - 29 hours per week, and
 - 27% work less than 10 hours per week.
- **Engagement at SFU:** Students were asked if they have participated in some activities at SFU over the course of their education here:
 - 17% have participated in an SFU volunteer program, with an additional 25% planning to participate, and
 - 12% participated in a class project involving a community or business organization, with an additional 16% planning to participate.
- **Engagement in the Community:**
 - **Local Community:**
 - In the last year:
 - 66% have done volunteer work,
 - 36% have engaged in civic activities,
 - 27-34% have engaged in humanitarian efforts, environmental advocacy, and social justice activities, and
 - 19% have engaged in community service work that made use of their SFU education.

- **International Setting:**
 - In the last year:
 - 15% have done volunteer work,
 - 7-12% have engaged in environmental advocacy, civic activities, social justice activities, and humanitarian efforts, and
 - 5% have engaged in community service work that made use of their SFU education.



- **Attendance of Science Events:**
 - Prior to becoming a student at SFU, 17% of respondents had attended at least one of the following on-campus events:
 - Science in Action, Starry Nights, Science Spooktacular, Girls Exploring Physics, Science Rendezvous, Mathcatcher, Cafe Scientifique
 - Math or science workshops with your school
 - Math or science-oriented summer camps with SFU
 - Meet and greets with SFU science professors
 - Tours of SFU science facilities
 - 79% of those who attended at least one of these events were satisfied with the event(s).

Recommendations

- **Student Life/Campus Community:** Students continue to request improvements to student life and the campus community, such as holding more social events like parties and group activities.
- **Course Availability and Flexibility:** This year, course scheduling and class cancellations⁷ are main concerns for students. Student responses also suggest the need for continued effort to:
 - increase the frequency of courses, and
 - increase the number of course sections.

⁷ Note that escalation of the TSSU strike this fall impacted classes, including cancellations of classes, tutorials, and labs.

- **Facilities:** Based on comments received, student satisfaction with facilities could be further improved by:
 - continuing to increase the number and quality of study areas,
 - adding more colour and greenery to the campus, and
 - continuing to renovate and repair buildings.

- **Policies and Services:** Some additional student suggestions over the last few years for improving their experience at SFU include:
 - improving communication with students,
 - lowering tuition and fees, and improving financial aid,
 - introducing more work, volunteer, and research opportunities,
 - improving the quality of courses/education while lowering the workload,
 - providing more academic support,
 - improving the teaching skills and accessibility of instructors and TAs,
 - improving the enrolment process and exam scheduling,
 - improving campus way-finding,
 - improving parking availability and affordability, and
 - improving wi-fi quality.

DISTRIBUTION OF RESPONSES TO SURVEY QUESTIONS

This section displays the distribution of student responses to the survey questions. The tables that follow show the number and percentage of students selecting each response to the questions. In cases where students could select more than one response, two sets of percentages are displayed: the percentage of all respondents (percentage of all those who answered the question), and the percentage of all responses (which will usually exceed the number of people who answered the question). For most purposes, the percentage of respondents is more meaningful.

Please note that percentages in these tables are rounded to one decimal place. Summaries that group categories (e.g. where "Very satisfied" and "Somewhat satisfied" are grouped) may result in percentages that do not exactly match the sum of the percentages displayed in the tables. This is an artifact of rounding.

Introductory Questions

1)	How satisfied are you with your overall SFU experience?		
	Very satisfied	458	8.3%
	Somewhat satisfied	2,867	52.0%
	Undecided	76	1.4%
	Not very satisfied	1,496	27.1%
	Not at all satisfied	621	11.3%
	Total Responses	5,518	100.0%
	Missing Cases	1	

2)	If SFU could do one thing to improve your experience here, what would it be? (Please describe only the single most important thing.)
----	---

This is an open-ended question. The responses to this question are discussed in the "General SFU Experience" section.

Section 1: Course Availability

3)	Were you able to register in ALL of the SPECIFIC courses you wanted to take this fall? (For example, if you wanted to take HIST 101, MATH 151 and PSYC 100, were you able to register in all three classes, in any section?) EXCLUDE courses not offered and courses for which you did not have the pre- or co-requisites.
----	---

Note: Students who were on a co-op work term and not taking any courses were not asked this question.

	Yes - I got all of the SPECIFIC courses I wanted.	2,592	57.8%
	No - I was unable to get 1 SPECIFIC course that was offered.	950	21.2%
	No - I was unable to get 2 SPECIFIC courses.	616	13.7%
	No - I was unable to get 3 SPECIFIC courses.	227	5.1%
	No - I was unable to get 4 SPECIFIC courses.	56	1.2%
	No - I was unable to get 5 or more SPECIFIC courses.	47	1.0%
	Total Responses	4,488	100.0%
	Missing Cases	878	

4)	Of the SPECIFIC courses you DID NOT GET (identified in the last question), how many were:
----	--

Note: Missing data in this question have been imputed where appropriate.

REQUIRED courses specific to your degree/credential?		
	0	289 15.7%
	1	773 42.1%
	2	448 24.4%
	3	188 10.2%
	4	73 4.0%
	5 or more	64 3.5%
	Total Responses	1,835 100.0%
	Missing Cases	61

OPTIONAL or ELECTIVE courses in your area of study?		
0	1,127	62.0%
1	410	22.6%
2	161	8.9%
3	75	4.1%
4	16	0.9%
5 or more	29	1.6%
Total Responses	1,818	100.0%
Missing Cases	78	

GENERAL INTEREST courses outside of your area of study?		
0	1,213	66.8%
1	359	19.8%
2	139	7.7%
3	63	3.5%
4	20	1.1%
5 or more	22	1.2%
Total Responses	1,816	100.0%
Missing Cases	80	

- 5) If you were unable to register in any REQUIRED courses you wanted this fall term, what level were the courses? (This time, INCLUDE courses that were not offered and courses for which you did not have the pre- or co-requisites. Please select ALL that apply.)

Note: Students who were on a co-op work term and not taking any courses were not asked this question.

		% of 4,506 Responses	% of 4,332 Respondents
Lower Division (REQUIRED courses numbered XX1 to 299)	1,103	24.5%	25.5%
Upper Division (REQUIRED courses numbered 300 to 499)	993	22.0%	22.9%
Not Applicable, I got all the REQUIRED courses I wanted to take this term	2,410	53.5%	55.6%
Total Responses	4,506	100.0%	104.0%
Missing Cases	1,034		

- 6) LOWER DIVISION: Please select ALL reasons why you were unable to register in lower division required courses this fall term.

Note: In this question, students who responded "Other" and then described one of the categories were reclassified as appropriate.

		% of 2,628 Responses	% of 1,059 Respondents
All course sections were full	727	27.7%	68.6%
Course spaces were reserved for other students	338	12.9%	31.9%
The primary course component (lecture) had a scheduling conflict with another SFU course	284	10.8%	26.8%
The secondary course component (lab/tutorial/etc.) had a scheduling conflict with another SFU course	233	8.9%	22.0%
The course was not offered this term	226	8.6%	21.3%
The course was offered at another campus and there was not enough time to travel from one campus to the other	213	8.1%	20.1%
Available course sections were not offered at a TIME when I wanted to be taking SFU courses	164	6.2%	15.5%
The course had a conflict with my work schedule	116	4.4%	11.0%
Available course sections were not offered on a DAY when I wanted to be taking SFU courses	113	4.3%	10.7%
The instructor I wanted was not available	98	3.7%	9.3%
I did not have the pre- or co-requisites	97	3.7%	9.2%
Other	19	0.7%	1.8%
Total Responses	2,628	100.0%	248.2%
Missing Cases	44		

7)

UPPER DIVISION: Please select ALL reasons why you were unable to register in upper division required courses this fall term.*Note: In this question, students who responded "Other" and then described one of the categories were reclassified as appropriate.*

		% of 2,333 Responses	% 950 of Respondents
All course sections were full	592	25.4%	62.3%
The course was not offered this term	326	14.0%	34.3%
The primary course component (lecture) had a scheduling conflict with another SFU course	291	12.5%	30.6%
The secondary course component (lab/tutorial/etc.) had a scheduling conflict with another SFU course	193	8.3%	20.3%
Course spaces were reserved for other students	188	8.1%	19.8%
The course was offered at another campus and there was not enough time to travel from one campus to the other	166	7.1%	17.5%
Available course sections were not offered at a TIME when I wanted to be taking SFU courses	144	6.2%	15.2%
The course had a conflict with my work schedule	118	5.1%	12.4%
Available course sections were not offered on a DAY when I wanted to be taking SFU courses	104	4.5%	10.9%
I did not have the pre- or co-requisites	94	4.0%	9.9%
The instructor I wanted was not available	90	3.9%	9.5%
Other	27	1.2%	2.8%
Total Responses	2,333	100.0%	245.6%
Missing Cases	43		

8)

Were you able to register in the NUMBER of courses you wanted to take this fall? (Example: If you wanted to take 4 courses, were you able to register in 4 courses?)*Note: Students who were on a co-op work term and not taking any courses were not asked this question.*

Yes - I got the NUMBER of courses I wanted.	3,513	82.4%
No - I got 1 course LESS than the number I wanted.	531	12.5%
No - I got 2 courses LESS.	124	2.9%
No - I got 3 courses LESS.	59	1.4%
No - I got 4 courses LESS.	28	0.7%
No - I got 5 or more courses LESS than the number I wanted.	9	0.2%
Total Responses	4,264	100.0%
Missing Cases	1,102	

9)

How satisfied were you with COURSE AVAILABILITY at SFU this term (Fall 2023)?*Note: Students who were on a co-op work term and not taking any courses were not asked this question.*

Courses numbered XX1 to 199		
Very satisfied	871	29.8%
Somewhat satisfied	1,347	46.1%
Undecided	114	3.9%
Not very satisfied	380	13.0%
Not at all satisfied	211	7.2%
Total Responses	2,923	100.0%
Not Applicable	1,154	
Missing Cases	1,289	

Courses numbered 200 to 299		
Very satisfied	587	25.0%
Somewhat satisfied	1,090	46.5%
Undecided	112	4.8%
Not very satisfied	379	16.2%
Not at all satisfied	177	7.5%
Total Responses	2,345	100.0%
Not Applicable	1,623	
Missing Cases	1,398	

Courses numbered 300 to 399		
Very satisfied	445	20.7%
Somewhat satisfied	849	39.6%
Undecided	107	5.0%
Not very satisfied	471	21.9%
Not at all satisfied	274	12.8%
Total Responses	2,146	100.0%
Not Applicable	1,832	
Missing Cases	1,388	

Courses numbered 400 to 499		
Very satisfied	363	25.3%
Somewhat satisfied	474	33.1%
Undecided	121	8.4%
Not very satisfied	275	19.2%
Not at all satisfied	200	14.0%
Total Responses	1,433	100.0%
Not Applicable	2,497	
Missing Cases	1,436	

Summary		
	% Very / Somewhat satisfied	
Courses numbered XX1 to 199	75.9%	
Courses numbered 200 to 299	71.5%	
Courses numbered 300 to 399	60.3%	
Courses numbered 400 to 499	58.4%	

10) What is your preferred course delivery format? Please rate from 1-3 with '1' being your top choice.

Note: Missing data in this question have been imputed where appropriate.

In-person		
1	1,995	48.6%
2	996	24.2%
3	1,117	27.2%
Total Responses	4,108	100.0%
Missing Cases	1,411	

Online		
1	984	24.5%
2	904	22.5%
3	2,134	53.1%
Total Responses	4,022	100.0%
Missing Cases	1,497	

Blended (combining in-person and online)			
	1	1,133	27.5%
	2	2,104	51.1%
	3	878	21.3%
	Total Responses	4,115	100.0%
	Missing Cases	1,404	
11) If you were to take a course with an online component, what is your preferred format?			
	Synchronous (meetings in real-time)	739	17.2%
	Asynchronous (accessing materials and learning at your own pace)	1,640	38.1%
	A mix of synchronous and asynchronous	1,663	38.6%
	I have no preference	263	6.1%
	Total Responses	4,305	100.0%
	Missing Cases	1,214	
12) What proportion of your courses in a term would you ideally like to take online?			
	None of them	1,081	25.4%
	Less than half	1,445	33.9%
	About half	880	20.7%
	More than half	284	6.7%
	All of them	329	7.7%
	I have no preference	238	5.6%
	Total Responses	4,257	100.0%
	Missing Cases	1,262	
13) What proportion of your courses in a term would you ideally like to take blended (combining in-person and online course components)?			
	None of them	893	21.0%
	Less than half	1,151	27.1%
	About half	1,032	24.3%
	More than half	478	11.2%
	All of them	389	9.1%
	I have no preference	310	7.3%
	Total Responses	4,253	100.0%
	Missing Cases	1,266	
14) What factor(s) would lead you to take an online or blended course? Please select all that apply.			
<i>Note: In this question, students who responded "Other" and then described one of the categories were reclassified as appropriate.</i>			
		<i>% of 12,962 Responses</i>	<i>% 4,215 of Respondents</i>
	To balance my studies with other commitments (e.g. work, athletics, family obligations, etc.)	3,191	24.6%
	Save time on my commute to campus	2,820	21.8%
	To manage course scheduling conflicts	2,483	19.2%
	I prefer to learn at my own pace	1,584	12.2%
	I can take more courses in a term if some of them are online or blended	1,250	9.6%
	The accessibility (i.e., captions, reduced mobility issues) that online learning provides me	945	7.3%
	The ability to live outside of the lower mainland	558	4.3%
	Other	131	1.0%
	Total Responses	12,962	100.0%
	No factors would lead me to take an online or blended course	242	
	Missing Cases	1,304	

15) What barrier(s) would discourage you from taking an online course? Please select all that apply.

Note: In this question, students who responded "Other" and then described one of the categories were reclassified as appropriate.

		% of 6,980 Responses	% 4,175 of Respondents
I have difficulty staying engaged with online courses	2,283	32.7%	54.7%
I feel that the quality of the learning experience is better in-person	2,122	30.4%	50.8%
It is easier for me to approach my professors when meeting in-person	1,464	21.0%	35.1%
I don't have good study space at home	815	11.7%	19.5%
I don't have sufficient internet bandwidth at home	182	2.6%	4.4%
Other	114	1.6%	2.7%
Total Responses	6,980	100.0%	167.2%
I would not experience any barriers if I take an online course	877		
Missing Cases	1,344		

Section 2: Credential Planning and Completion**16) When you first began your degree/credential at SFU, whether recently or some time ago, how long did you EXPECT it would take you to complete it?**

2 years or less	264	6.7%
3 years	288	7.3%
4 years	2,304	58.7%
5 years	996	25.4%
6 years or more	76	1.9%
Total Responses	3,928	100.0%
Don't know	196	
Not in a degree/credential program	62	
Missing Cases	1,333	

17) How important did you think it was to complete your degree/credential within that time frame?

Very important	1,458	37.3%
Somewhat important	1,739	44.5%
Not very important	546	14.0%
Not at all important	80	2.0%
I had no opinion	82	2.1%
Total Responses	3,905	100.0%
I don't remember	13	
Missing Cases	10	

18) Compared to what you expected when you first began your degree/credential at SFU, how long is it actually taking you to complete your degree/credential?

Note: Only students who did not indicate that they are not in a degree/credential program in Q16 were shown this question.

Shorter time than EXPECTED	111	2.7%
Same time as EXPECTED	858	20.9%
Longer time than EXPECTED - by 1 or 2 terms	989	24.1%
Longer time than EXPECTED - by 3 to 5 terms (1 year)	999	24.3%
Longer time than EXPECTED - by 6 to 8 terms (2 years)	387	9.4%
Longer time than EXPECTED - by 9 or more terms (3 or more years)	119	2.9%
Don't know	644	15.7%
Total Responses	4,107	100.0%
Missing Cases	1,350	

19)

Please indicate ALL reasons for taking longer than EXPECTED to complete your degree/credential at SFU.

Note: In this question, students who responded "Other" and then described one of the categories were reclassified as appropriate.

		% of 8,309 Responses	% of 2,478 Respondents
Course availability issues (e.g. full courses, schedule conflicts, courses not offered, etc.)	1,343	16.2%	54.2%
Taking/Took reduced course load	1,020	12.3%	41.2%
Participation in co-op	924	11.1%	37.3%
Working full-time or part-time (outside of co-op)	893	10.7%	36.0%
Personal reasons (e.g. home/family obligations, illness, etc.)	644	7.8%	26.0%
Difficulty meeting program requirements (e.g. failed/repeated courses, complex/unclear program requirements, etc.)	554	6.7%	22.4%
Changed program/area of specialization, or late in making decision on program	508	6.1%	20.5%
Taking courses not counting towards graduation requirements	453	5.5%	18.3%
Financial issues/obligations	446	5.4%	18.0%
Pursuing expanded program (e.g. double major, honours, other credentials/diplomas/certificates at the same time, etc.)	437	5.3%	17.6%
Took unplanned time off	345	4.2%	13.9%
Took advantage of opportunities/programs designed to enhance my education (e.g. study abroad, field school, working within a faculty member's research team, etc.)	315	3.8%	12.7%
Problems related to transferring credits from other institutions	222	2.7%	9.0%
Wanted to delay graduation because of the weak job market/high unemployment rate	123	1.5%	5.0%
Other	82	1.0%	3.3%
Total Responses	8,309	100.0%	335.3%
Missing Cases	16		

Section 3: Teaching and Curriculum

20)

How satisfied are you with the overall quality of teaching at SFU?

Very satisfied	537	12.9%
Somewhat satisfied	2,625	63.2%
Undecided	48	1.2%
Not very satisfied	750	18.1%
Not at all satisfied	195	4.7%
Total Responses	4,155	100.0%
Missing Cases	1,364	

21)

To what extent do you agree with the following statements about your W, Q and B coursework?

My "W" coursework has helped me to become a better writer		
Strongly agree	491	14.0%
Agree	1,537	43.7%
Undecided	544	15.5%
Disagree	697	19.8%
Strongly disagree	250	7.1%
Total Responses	3,519	100.0%
Have not taken a "W" course	576	
Missing Cases	1,424	

My "Q" coursework has helped me to better use reasoning in practical problem-solving, critical evaluation and analysis		
Strongly agree	512	14.3%
Agree	1,629	45.5%
Undecided	607	16.9%
Disagree	601	16.8%
Strongly disagree	234	6.5%
Total Responses	3,583	100.0%
Have not taken a "Q" course	509	
Missing Cases	1,427	

My "B" coursework has exposed me to new theoretical perspectives, forms of thought and modes of enquiry		
Strongly agree	651	18.3%
Agree	1,654	46.4%
Undecided	620	17.4%
Disagree	460	12.9%
Strongly disagree	180	5.0%
Total Responses	3,565	100.0%
Have not taken a "B" course	520	
Missing Cases	1,434	

Summary		% Strongly agree / Agree
My "B" coursework has exposed me to new theoretical perspectives, forms of thought and modes of enquiry		64.7%
My "Q" coursework has helped me to better use reasoning in practical problem-solving, critical evaluation and analysis		59.8%
My "W" coursework has helped me to become a better writer		57.6%

22) To what extent do you agree with the following statements about your learning experiences:

Overall, my instructors at SFU provide me with learning experiences that...

Encourage social connection between students		
Strongly agree	350	9.0%
Agree	1,953	50.2%
Undecided	274	7.0%
Disagree	944	24.3%
Strongly disagree	368	9.5%
Total Responses	3,889	100.0%
Not applicable, I haven't been here long enough to decide	182	
Missing Cases	1,448	

Are flexible to my needs		
Strongly agree	269	7.0%
Agree	1,907	49.3%
Undecided	338	8.7%
Disagree	1,028	26.6%
Strongly disagree	328	8.5%
Total Responses	3,870	100.0%
Not applicable, I haven't been here long enough to decide	193	
Missing Cases	1,456	

Are welcoming, respectful and inclusive for all students		
Strongly agree	923	23.3%
Agree	2,514	63.4%
Undecided	177	4.5%
Disagree	257	6.5%
Strongly disagree	95	2.4%
Total Responses	3,966	100.0%
Not applicable, I haven't been here long enough to decide	98	
Missing Cases	1,455	

Are challenging but not overwhelming		
Strongly agree	292	7.4%
Agree	2,059	52.2%
Undecided	303	7.7%
Disagree	989	25.1%
Strongly disagree	305	7.7%
Total Responses	3,948	100.0%
Not applicable, I haven't been here long enough to decide	115	
Missing Cases	1,456	

Introduce me to resources that support my well-being		
Strongly agree	353	9.1%
Agree	1,765	45.7%
Undecided	462	12.0%
Disagree	955	24.7%
Strongly disagree	325	8.4%
Total Responses	3,860	100.0%
Not applicable, I haven't been here long enough to decide	201	
Missing Cases	1,458	

Summary		
Overall, my instructors at SFU provide me with learning experiences that...	% Strongly agree / Agree	
are welcoming, respectful and inclusive for all students	86.7%	
are challenging but not overwhelming	59.5%	
encourage social connection between students	59.2%	
are flexible to my needs	56.2%	
introduce me to resources that support my well-being	54.9%	

23) Please provide your level of agreement with the following statements:

In general, I feel like my instructors at SFU positively impact my well-being.		
Strongly agree	457	11.3%
Agree	2,050	50.5%
Undecided	606	14.9%
Disagree	779	19.2%
Strongly disagree	164	4.0%
Total Responses	4,056	100.0%
Missing Cases	1,463	

In general, I am satisfied with the availability of my instructors at SFU.		
Strongly agree	451	11.1%
Agree	2,300	56.8%
Undecided	346	8.5%
Disagree	724	17.9%
Strongly disagree	230	5.7%
Total Responses	4,051	100.0%
Missing Cases	1,468	
Overall, the size of my classes is beneficial to my learning.		
Strongly agree	439	10.9%
Agree	1,917	47.4%
Undecided	585	14.5%
Disagree	814	20.1%
Strongly disagree	290	7.2%
Total Responses	4,045	100.0%
Missing Cases	1,474	
Summary		
	% Strongly agree / Agree	
I am satisfied with the availability of my instructors at SFU	67.9%	
I feel like my instructors at SFU positively impact my well-being	61.8%	
The size of my classes is beneficial to my learning	58.2%	

Section 4: Services

24) How satisfied are you with the following services and resources at SFU?

English-Language support services (e.g. workshops to improve your conversational, listening and writing English skills)		
Very satisfied	185	16.1%
Somewhat satisfied	277	24.1%
Undecided	560	48.8%
Not very satisfied	85	7.4%
Not at all satisfied	40	3.5%
Total Responses	1,147	100.0%
Have not used this service at SFU	2,850	
Missing Cases	1,522	
Student Learning Commons (SLC; help on academic writing, learning and study strategies, etc.)		
Very satisfied	381	24.3%
Somewhat satisfied	534	34.0%
Undecided	448	28.6%
Not very satisfied	136	8.7%
Not at all satisfied	70	4.5%
Total Responses	1,569	100.0%
Have not used this service at SFU	2,425	
Missing Cases	1,525	

Library (other than SLC), including books, journals, databases, equipment, makers space, etc.		
Very satisfied	1,278	40.2%
Somewhat satisfied	1,415	44.5%
Undecided	287	9.0%
Not very satisfied	151	4.7%
Not at all satisfied	50	1.6%
Total Responses	3,181	100.0%
Have not used this service at SFU	822	
Missing Cases	1,516	
Academic Advising (help with course planning, program planning, and advice if experiencing academic difficulty)		
Very satisfied	1,092	33.7%
Somewhat satisfied	1,267	39.1%
Undecided	214	6.6%
Not very satisfied	449	13.8%
Not at all satisfied	222	6.8%
Total Responses	3,244	100.0%
Have not used this service at SFU	753	
Missing Cases	1,522	
Financial Aid and Awards		
Very satisfied	501	21.7%
Somewhat satisfied	672	29.1%
Undecided	409	17.7%
Not very satisfied	464	20.1%
Not at all satisfied	264	11.4%
Total Responses	2,310	100.0%
Have not used this service at SFU	1,669	
Missing Cases	1,540	
Work Integrated Learning (e.g. co-op)		
Very satisfied	417	24.1%
Somewhat satisfied	504	29.2%
Undecided	509	29.5%
Not very satisfied	194	11.2%
Not at all satisfied	103	6.0%
Total Responses	1,727	100.0%
Have not used this service at SFU	2,256	
Missing Cases	1,536	
Direct career related supports (e.g. one-on-one support with career educators, career peers, etc.)		
Very satisfied	231	17.5%
Somewhat satisfied	343	25.9%
Undecided	485	36.7%
Not very satisfied	160	12.1%
Not at all satisfied	104	7.9%
Total Responses	1,323	100.0%
Have not used this service at SFU	2,666	
Missing Cases	1,530	

Summary

	% Very / Somewhat satisfied
Library (other than SLC)	84.7%
Academic Advising	72.7%
Student Learning Commons	58.3%
Work Integrated Learning	53.3%
Financial Aid and Awards	50.8%
Direct career related supports	43.4%
English-Language support services	40.3%

25) Please indicate your level of awareness of the following health resources at SFU.**My SSP (Student Support Program that provides 24/7 mental health support)**

Used it	351	9.0%
Aware of it, but never used it	1,999	51.3%
Not aware of it	1,546	39.7%
Total Responses	3,896	100.0%
Prefer not to answer	101	
Missing Cases	1,522	

Mental health supports (e.g. counselling, groups, drop-in programs)

Used it	435	11.2%
Aware of it, but never used it	2,394	61.5%
Not aware of it	1,063	27.3%
Total Responses	3,892	100.0%
Prefer not to answer	102	
Missing Cases	1,525	

Physical health (e.g. doctors and nurses)

Used it	493	12.6%
Aware of it, but never used it	1,996	51.2%
Not aware of it	1,411	36.2%
Total Responses	3,900	100.0%
Prefer not to answer	89	
Missing Cases	1,530	

Health and well-being outreach events and/or programs (e.g. health peers, online training)

Used it	116	3.0%
Aware of it, but never used it	1,929	49.6%
Not aware of it	1,844	47.4%
Total Responses	3,889	100.0%
Prefer not to answer	96	
Missing Cases	1,534	

Summary

	% Used it / Aware of it, but never used it
Mental health supports (e.g. counselling, groups, drop-in programs)	72.7%
Physical health (e.g. doctors and nurses)	63.8%
My SSP (Student Support Program that provides 24/7 mental health support)	60.3%
Health and well-being outreach events and/or programs (e.g. health peers, online training)	52.6%

26)

How satisfied are you with the following health resources at SFU?**My SSP (Student Support Program that provides 24/7 mental health support)**

Very satisfied	67	19.1%
Somewhat satisfied	119	34.0%
Undecided	22	6.3%
Not very satisfied	75	21.4%
Not at all satisfied	67	19.1%
Total Responses	350	100.0%
Missing Cases	1	

Mental health supports (e.g. counselling, groups, drop-in programs)

Very satisfied	124	28.6%
Somewhat satisfied	178	41.1%
Undecided	21	4.8%
Not very satisfied	76	17.6%
Not at all satisfied	34	7.9%
Total Responses	433	100.0%
Missing Cases	2	

Physical health (e.g. doctors and nurses)

Very satisfied	223	45.3%
Somewhat satisfied	198	40.2%
Undecided	17	3.5%
Not very satisfied	34	6.9%
Not at all satisfied	20	4.1%
Total Responses	492	100.0%
Missing Cases	1	

Health and well-being outreach events and/or programs (e.g. health peers, online training)

Very satisfied	39	34.2%
Somewhat satisfied	49	43.0%
Undecided	13	11.4%
Not very satisfied	4	3.5%
Not at all satisfied	9	7.9%
Total Responses	114	100.0%
Missing Cases	2	

Summary

	% Very / Somewhat satisfied
Physical health (e.g. doctors and nurses)	85.6%
Health and well-being outreach events and/or programs (e.g. health peers, online training)	77.2%
Mental health supports (e.g. counselling, groups, drop-in programs)	69.7%
My SSP (Student Support Program that provides 24/7 mental health support)	53.1%

27) Please indicate which of the following My SSP features you were aware of BEFORE taking this survey.

Note: Only students who indicated they have used My SSP or were aware of My SSP, but never used it, in Q25, were shown this question.

		% of 7,740 Responses	% of 2,292 Respondents
My SSP is a free service	1,293	16.7%	56.4%
My SSP is a confidential service	1,141	14.7%	49.8%
Real-time (immediate) support	1,122	14.5%	49.0%
Ability to have appointments in-person, by phone, or by video	1,098	14.2%	47.9%
Ability to pre-book appointments	955	12.3%	41.7%
Support in multiple languages	654	8.4%	28.5%
Well-being articles and tools available in the app	533	6.9%	23.3%
Opportunity to request a counsellor who speaks a specific language for pre-booked appointments	479	6.2%	20.9%
Opportunity to request a counsellor of a specific identification (e.g. gender, sexual orientation, ethnicity, religious affiliation, disability) for pre-booked appointments	465	6.0%	20.3%
Total Responses	7,740	100.0%	337.7%
None of the above (i.e. I was aware of My SSP but didn't know about any of the above features)	528		
Missing Cases	58		

28) To what extent do you agree that SFU provides you with the resources that help you...

Build skills for mental well-being			
Strongly agree	169	4.3%	
Agree	1,475	37.1%	
Undecided	932	23.5%	
Disagree	1,041	26.2%	
Strongly disagree	356	9.0%	
Total Responses	3,973	100.0%	
Missing Cases	1,546		

Build skills for physical well-being			
Strongly agree	198	5.0%	
Agree	1,463	36.9%	
Undecided	878	22.1%	
Disagree	1,067	26.9%	
Strongly disagree	361	9.1%	
Total Responses	3,967	100.0%	
Missing Cases	1,552		

Support others' well-being			
Strongly agree	191	4.8%	
Agree	1,552	39.1%	
Undecided	1,038	26.2%	
Disagree	882	22.2%	
Strongly disagree	302	7.6%	
Total Responses	3,965	100.0%	
Missing Cases	1,554		

Summary			
		% Strongly agree / Agree	
Support others' well-being		44.0%	
Build skills for physical well-being		41.9%	
Build skills for mental well-being		41.4%	

Section 5: University Culture and Environment

29)	We are interested in whether or not students are thriving at SFU. Thriving is defined as getting the most out of your university experience, so that you are intellectually, socially, and psychologically engaged and enjoying the university experience.		
	Given that definition, to what extent do you agree with the following statement: I am thriving as a university student this term.		
	Strongly agree	231	5.8%
	Agree	1,264	31.8%
	Undecided	397	10.0%
	Disagree	1,354	34.1%
	Strongly disagree	729	18.3%
	Total Responses	3,975	100.0%
	Missing Cases	1,544	
30)	To what extent do you agree with the following statements:		
	I feel part of a caring campus community at SFU		
	Strongly agree	183	5.1%
	Agree	1,318	36.5%
	Undecided	422	11.7%
	Disagree	1,136	31.5%
	Strongly disagree	552	15.3%
	Total Responses	3,611	100.0%
	Not applicable, I haven't been here long enough to decide	342	
	Missing Cases	1,566	
	It is easy to make meaningful social connections with others at SFU		
	Strongly agree	179	4.8%
	Agree	1,144	30.5%
	Undecided	272	7.2%
	Disagree	1,363	36.3%
	Strongly disagree	797	21.2%
	Total Responses	3,755	100.0%
	Not applicable, I haven't been here long enough to decide	191	
	Missing Cases	1,573	
	SFU is a place that positively impacts my well-being		
	Strongly agree	176	4.7%
	Agree	1,352	36.4%
	Undecided	610	16.4%
	Disagree	1,059	28.5%
	Strongly disagree	514	13.9%
	Total Responses	3,711	100.0%
	Not applicable, I haven't been here long enough to decide	239	
	Missing Cases	1,569	
	SFU provides me with a supportive environment that reduces unnecessary personal and academic stress		
	Strongly agree	130	3.5%
	Agree	959	26.0%
	Undecided	498	13.5%
	Disagree	1,311	35.5%
	Strongly disagree	797	21.6%
	Total Responses	3,695	100.0%
	Not applicable, I haven't been here long enough to decide	250	
	Missing Cases	1,574	

My faculty provides me with a supportive environment that enhances my well-being		
Strongly agree	326	8.9%
Agree	1,753	47.7%
Undecided	507	13.8%
Disagree	738	20.1%
Strongly disagree	353	9.6%
Total Responses	3,677	100.0%
Not applicable, I haven't been here long enough to decide	266	
Missing Cases	1,576	
My mental health and well-being impacts my academic success at SFU		
Strongly agree	1,723	45.5%
Agree	1,486	39.2%
Undecided	179	4.7%
Disagree	245	6.5%
Strongly disagree	156	4.1%
Total Responses	3,789	100.0%
Not applicable, I haven't been here long enough to decide	149	
Missing Cases	1,581	
Summary		
	% Strongly agree / Agree	
My mental health and well-being impacts my academic success at SFU	84.7%	
My faculty provides me with a supportive environment that enhances my well-being	56.5%	
I feel part of a caring campus community at SFU	41.6%	
SFU is a place that positively impacts my well-being	41.2%	
It is easy to make meaningful social connections with others at SFU	35.2%	
SFU provides me with a supportive environment that reduces unnecessary personal and academic stress	29.5%	

Section 6: Background Information

31) For each of the following statements, please provide the answer (either "Yes" or "No") that best describes your current status.

I am currently EMPLOYED in a job or jobs, or self-employed (EXCLUDING co-op)		
Yes	2,184	55.4%
No	1,761	44.6%
Total Responses	3,945	100.0%
Missing cases	1,574	
I identify as an Indigenous person of Canada, i.e. First Nations, Metis, or Inuit (either status or non-status)		
Yes	103	2.6%
No	3,824	97.4%
Total Responses	3,927	100.0%
Missing cases	1,592	
I feel that I would perform better in my classes if I had English language support		
Yes	371	9.4%
No	3,557	90.6%
Total Responses	3,928	100.0%
Missing cases	1,591	



32)	On average, how many HOURS do you spend PER WEEK working in a paid job?		
	0	22	1.0%
	1 - 9	568	26.0%
	10 - 19	942	43.2%
	20 - 29	456	20.9%
	30 - 39	140	6.4%
	40 or more	53	2.4%
	Total Responses	2,181	100.0%
	Missing cases	3	

33)	Which language(s) do you speak at home? Please select all that apply.		
-----	--	--	--

Note: In this question, students who responded "Other" and then described one of the categories were reclassified as appropriate.

		% of 6,358 Responses	% of 3,950 Respondents
English	3,478	54.7%	88.1%
Cantonese	370	5.8%	9.4%
Punjabi	361	5.7%	9.1%
Mandarin	346	5.4%	8.8%
Hindi-Urdu	263	4.1%	6.7%
French	215	3.4%	5.4%
Vietnamese	131	2.1%	3.3%
Farsi/Persian	130	2.0%	3.3%
Korean	128	2.0%	3.2%
Filipino/Tagalog	127	2.0%	3.2%
Spanish/Castilian	127	2.0%	3.2%
Arabic	69	1.1%	1.7%
Japanese	60	0.9%	1.5%
Russian	60	0.9%	1.5%
Indonesian	39	0.6%	1.0%
German	36	0.6%	0.9%
Portuguese	30	0.5%	0.8%
Italian	29	0.5%	0.7%
Taiwanese	26	0.4%	0.7%
Bosnian/Croatian/Serbian	26	0.4%	0.7%
Polish	19	0.3%	0.5%
American Sign Language	9	0.1%	0.2%
Indigenous Language of Canada	6	0.1%	0.2%
Other	273	4.3%	6.9%
Total Responses	6,358	100.0%	161.0%
Missing Cases	1,569		

34)	What was the first language you learned as a child and still use regularly?		
	English	2,394	60.8%
	Other language	1,544	39.2%
	Total Responses	3,938	100.0%
	Missing Cases	1,581	

35)	Which language do you speak most often with your friends?		
	English	3,574	90.7%
	Other language	366	9.3%
	Total Responses	3,940	100.0%
	Missing Cases	1,579	

36) Did you attend any of the following on-campus events before you were a student at SFU?

- Science in Action, Starry Nights, Science Spooktacular, Girls Exploring Physics, Science Rendezvous, Mathcatcher, Cafe Scientifique
- Math or science workshops with your school
- Math or science-oriented summer camps with SFU
- Meet and greets with SFU science professors
- Tours of SFU science facilities

Yes	667	16.9%
No	3,105	78.5%
I don't remember	181	4.6%
Total Responses	3,953	100.0%
Missing Cases	1,566	

37) Please rate your satisfaction with the on-campus SFU science workshops/events you attended in the previous question.

Very satisfied	182	27.3%
Somewhat satisfied	346	52.0%
Undecided	86	12.9%
Not very satisfied	42	6.3%
Not at all satisfied	10	1.5%
Total Responses	666	100.0%
Missing Cases	1	

38) Do you feel your attendance to these SFU science workshops/events positively affected your decision to apply to SFU?

Yes	303	45.6%
No	190	28.6%
I don't know	171	25.8%
Total Responses	664	100.0%
Missing Cases	3	

39) Have you ever participated in these activities at SFU?

A class project involving a community or business organization

Yes	475	12.1%
No, but I'm planning on doing it	619	15.7%
No, and I am not planning on doing it	1,147	29.1%
Not aware of this activity	1,696	43.1%
Total Responses	3,937	100.0%
Missing Cases	1,582	

An SFU volunteer program (e.g. campus ambassador programs, peer programs, etc.)

Yes	662	16.8%
No, but I'm planning on doing it	974	24.7%
No, and I am not planning on doing it	1,353	34.3%
Not aware of this activity	950	24.1%
Total Responses	3,939	100.0%
Missing Cases	1,580	

Worked within an SFU faculty member's research team, separate from coursework

Yes	306	7.8%
No, but I'm planning on doing it	1,105	28.0%
No, and I am not planning on doing it	1,215	30.8%
Not aware of this activity	1,317	33.4%
Total Responses	3,943	100.0%
Missing Cases	1,576	

Summary			
		% Yes / No, but planning on doing it	
	An SFU volunteer program (e.g. campus ambassador programs, peer programs, etc.)		41.5%
	Worked within an SFU faculty member's research team, separate from coursework		35.8%
	A class project involving a community or business organization		27.8%
40)	In the last year, have you engaged in any of these types of activities in your local community and/or in an international setting?		
	In your LOCAL community		
	Any VOLUNTEER work		
	Yes	2,507	65.8%
	No	1,303	34.2%
	Total Responses	3,810	100.0%
	Missing Cases	1,709	
	CIVIC activities (voting, organizing/signing a petition, contacting a politician about a public issue, etc.)		
	Yes	1,379	36.2%
	No	2,434	63.8%
	Total Responses	3,813	100.0%
	Missing Cases	1,706	
	HUMANITARIAN efforts to help the needy (helping seniors, helping the poor, animal welfare, raising money for medical research, etc.)		
	Yes	1,294	34.0%
	No	2,516	66.0%
	Total Responses	3,810	100.0%
	Missing Cases	1,709	
	ENVIRONMENTAL advocacy (neighborhood cleaning, promoting clean initiatives, involvement with non-profit environmental groups, etc.)		
	Yes	1,028	26.9%
	No	2,798	73.1%
	Total Responses	3,826	100.0%
	Missing Cases	1,693	
	SOCIAL JUSTICE activities (promoting human rights issues: minority rights, workers' rights, rights of the homeless, etc.)		
	Yes	1,025	26.9%
	No	2,792	73.1%
	Total Responses	3,817	100.0%
	Missing Cases	1,702	
	Community service work that made use of the expertise you have acquired during your SFU EDUCATION		
	Yes	713	18.7%
	No	3,099	81.3%
	Total Responses	3,812	100.0%
	Missing Cases	1,707	
	In an INTERNATIONAL setting		
	Any VOLUNTEER work		
	Yes	493	15.0%
	No	2,800	85.0%
	Total Responses	3,293	100.0%
	Missing Cases	2,226	

CIVIC activities (voting, organizing/signing a petition, contacting a politician about a public issue, etc.)		
Yes	349	10.4%
No	3,002	89.6%
Total Responses	3,351	100.0%
Missing Cases	2,168	

HUMANITARIAN efforts to help the needy (helping seniors, helping the poor, animal welfare, raising money for medical research, etc.)		
Yes	405	12.1%
No	2,952	87.9%
Total Responses	3,357	100.0%
Missing Cases	2,162	

ENVIRONMENTAL advocacy (neighborhood cleaning, promoting clean initiatives, involvement with non-profit environmental groups, etc.)		
Yes	244	7.3%
No	3,110	92.7%
Total Responses	3,354	100.0%
Missing Cases	2,165	

SOCIAL JUSTICE activities (promoting human rights issues: minority rights, workers' rights, rights of the homeless, etc.)		
Yes	363	10.8%
No	2,994	89.2%
Total Responses	3,357	100.0%
Missing Cases	2,162	

Community service work that made use of the expertise you have acquired during your SFU EDUCATION		
Yes	164	4.9%
No	3,183	95.1%
Total Responses	3,347	100.0%
Missing Cases	2,172	

41) Which methods of travel do you use regularly to get to/from an SFU campus for classes? Please check all that apply.

Note: In this question, students who responded "Other" and then described one of the categories were reclassified as appropriate.

		% of 4,830 Responses	% of 3,930 Respondents
Drive in a car, or other motor vehicle (alone or in a car pool)	1,802	37.3%	45.9%
Public Transit (bus, skytrain, etc.)	2,699	55.9%	68.7%
Bicycle	46	1.0%	1.2%
Run/jog/walk	281	5.8%	7.2%
Other	2	0.0%	0.1%
Total Responses	4,830	100.0%	122.9%
Not Applicable, I do not regularly travel to any SFU campus for classes (e.g. I take my classes online)	27		
Not Applicable, I live on the campus where I take my classes	309		
Missing Cases	1,589		

42) Thank you for completing the survey. Do you have any other feedback you would like to share with us about your experience at SFU?

This is an open-ended question. The responses to this question are not discussed in this report.

Section 7: Additional Background Information, from the Student Information System

This section describes additional respondent background information that was not included on the survey. Because this year's survey was a confidential survey, rather than an anonymous one, student responses could be linked to their background data in SFU's Student Information System.

Faculty of students			
		% of 5,548 Responses	% of 5,517 Respondents
Applied Sciences	761	13.7%	13.8%
Arts and Social Sciences	1,855	33.4%	33.6%
Beedie School of Business	698	12.6%	12.7%
Communication, Art and Technology	416	7.5%	7.5%
Education	318	5.7%	5.8%
Environment	217	3.9%	3.9%
Health Sciences	362	6.5%	6.6%
Science	921	16.6%	16.7%
Total Responses	5,548	100.0%	100.6%
Missing Cases	2		

Credential pursued by students			
		% of 5,759 Responses	% of 5,519 Respondents
Bachelor's Degree	5,305	92.1%	96.1%
Certificate	195	3.4%	3.5%
Professional Development Program	173	3.0%	3.1%
Post Baccalaureate Diploma	10	0.2%	0.2%
Other/No Credential	76	1.3%	1.4%
Total Responses	5,759	100.0%	104.3%

Declared a major/minor/etc.			
Declared	3,944	71.5%	
Undeclared	1,575	28.5%	
Total Responses	5,519	100.0%	

Number of SFU courses the student is taking this term (Fall 2023)			
0	153	2.8%	
1	315	5.7%	
2	320	5.8%	
3	1,722	31.2%	
4	2,296	41.6%	
5	656	11.9%	
6	57	1.0%	
7	0	0.0%	
Total Responses	5,519	100.0%	

Full-time status this term (Fall 2023)			
Part-time (fewer than 9 credits and not on a co-op work term)	487	8.8%	
Full-time (9 or more credits, or on a co-op work term)	5,032	91.2%	
Total Responses	5,519	100.0%	

Where students are taking their courses this term (Fall 2023)

		<i>% of 7,625 Responses</i>	<i>% of 5,495 Respondents</i>
Burnaby	4,684	61.4%	85.2%
Surrey	1,031	13.5%	18.8%
Vancouver	388	5.1%	7.1%
Distance Education/Online	1,274	16.7%	23.2%
On Co-op Term	162	2.1%	2.9%
Other Location(s)	86	1.1%	1.6%
Total Responses	7,625	100.0%	138.8%
Missing Cases	24		

Total credits completed prior to the Fall 2023 term (including both SFU and transfer credits)

None	1,168	21.2%
1 - 29	691	12.5%
30 - 59	1,360	24.6%
60 - 89	1,206	21.9%
90 - 119	912	16.5%
120 or more	182	3.3%
Total Responses	5,519	100.0%

Cumulative Grade Point Average (CGPA)

No CGPA Available (new student, or no courses taken towards CGPA)	1,612	29.2%
Less than 2.00	153	2.8%
2.00 to 2.32	278	5.0%
2.33 to 2.66	536	9.7%
2.67 to 2.99	816	14.8%
3.00 to 3.32	816	14.8%
3.33 to 3.66	680	12.3%
3.67 to 3.99	468	8.5%
4.00 to 4.33	160	2.9%
Total Responses	5,519	100.0%

Participation in Co-op

Co-op students	1,132	20.5%
Not co-op students	4,387	79.5%
Total Responses	5,519	100.0%

Year of admission to SFU

2023	1,845	33.4%
2022	1,144	20.7%
2021	1,005	18.2%
2020	695	12.6%
2019	448	8.1%
2018	204	3.7%
Before 2018	178	3.2%
Total Responses	5,519	100.0%

Basis of admission to SFU		
BC High School	3,418	61.9%
BC College Transfer/Associate Degree	1,211	21.9%
Non-BC High School	444	8.0%
University Transfer	149	2.7%
Degree Holder	134	2.4%
Mature	28	0.5%
Other	135	2.4%
Total Responses	5,519	100.0%

New student status		
New students	1,558	28.2%
Returning students	3,961	71.8%
Total Responses	5,519	100.0%

International student status		
International students	889	16.1%
Domestic students	4,630	83.9%
Total Responses	5,519	100.0%

Gender		
<i>Note: For privacy reasons, non-binary and unspecified gender headcounts are reported under "Not reported".</i>		
Women	3,389	62.6%
Men	2,025	37.4%
Total Responses	5,414	100.0%
Not Reported	105	

Age (as of September 1, 2023)		
17 or younger	350	6.3%
18	983	17.8%
19	861	15.6%
20	890	16.1%
21	708	12.8%
22	634	11.5%
23	342	6.2%
24	217	3.9%
25	108	2.0%
26 - 30	231	4.2%
31 - 40	122	2.2%
41 - 50	47	0.9%
51 - 65	21	0.4%
Over 65	5	0.1%
Total Responses	5,519	100.0%