

Picturing the Supportive Shelter Needs of Older Adults Experiencing Elder Abuse

Jill Hoselton, MSW, Amber Dukart, BA, Christine A. Walsh, PhD

University of Calgary, Faculty of Social Work

January 13, 2023

Society for Social Work and Research (SSWR) 2023

AIRP: Aging in the Right Place

Aging in the right place (AIRP) recognizes that where an older person lives impacts their ability to age optimally and must match their unique lifestyles and vulnerabilities. As a concept, AIRP involves supporting older adults to live as long as possible in their homes and communities.





Agenda

- Purpose
- Defining Elder Abuse
- Methodology Arts-based Research (ABR)
- Strengths/Limitations of ABR
- Using Photovoice as Arts-Based Method
- Knowledge Mobilization: Art Exhibit
- Participants
- Findings
- Strengths/Limitations of Study
- Social Work & Art-based Research



Purpose

Safe and inclusive short-term shelter for older adults seeking to escape abuse in their home environments is a key community support intervention. Accordingly, this study uses multi-methods arts-based research to explore the socio-spatial needs of older adults residing in a supportive shelter who have experienced abuse.

Elder Abuse:

Affects approx. 1 in 6 people, 60 years and older, globally.

Definition

“Any action or inaction by a person(s) in a trusting relationship that causes harm and distress to an older adult”
(Alberta Elder Abuse Awareness Council [AEAAC], 2019, n.p.).

Types of Abuse

Financial

Psychological/Emotional

Physical

Sexual

Neglect

Medication



Methodology: Arts-Based Research (ABR)

- "ABR is a transdisciplinary approach to knowledge building that combines the tenets of creative arts in research contexts" (Leavy, 2017, p.4).
- It can be a method for gathering data, it can also be the data, or it can be used as a method for knowledge mobilization (Huss & Boss, 2022, p.2).
- ABR can use any art or representational form including, literary, performative, visual art, audiovisual, multimedia, and multi-method.




Arts-Based Research (ABR)

Strengths

- Can offer new insights and learning on a range of subject matters (Leavy, 2017)
- Disrupts the privileging of language as the medium for communication (Bagnoli, 2009)
- Non-language dimensions may allow us to access different levels of experience.
- Challenges unequal relations between researcher and participants
- Empowering to the participants

Limitations

- Time and resources
 - Despite the aims of ABR it can be exclusionary
- 

Using Photovoice as Arts-Based Method:

Key Principles

1. Images teach.
2. Pictures can influence policy.
3. Community members ought to participate in creating and defining the images and dialogue that shape policy.
4. The Photovoice process requires that researchers and community members bring policymakers and other influential people to serve as an audience.
5. Photovoice emphasizes individual and community action (Wang, 1999).

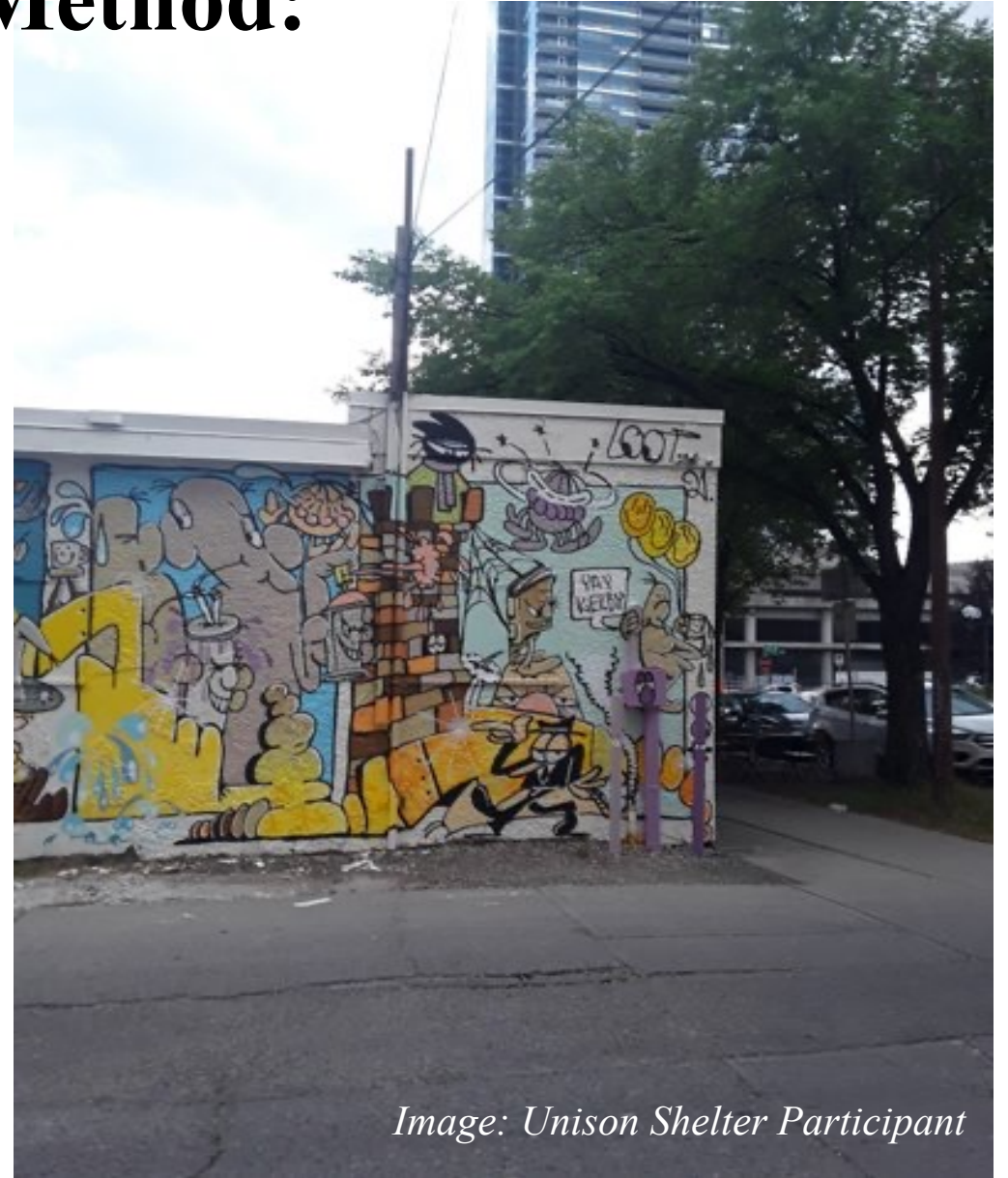
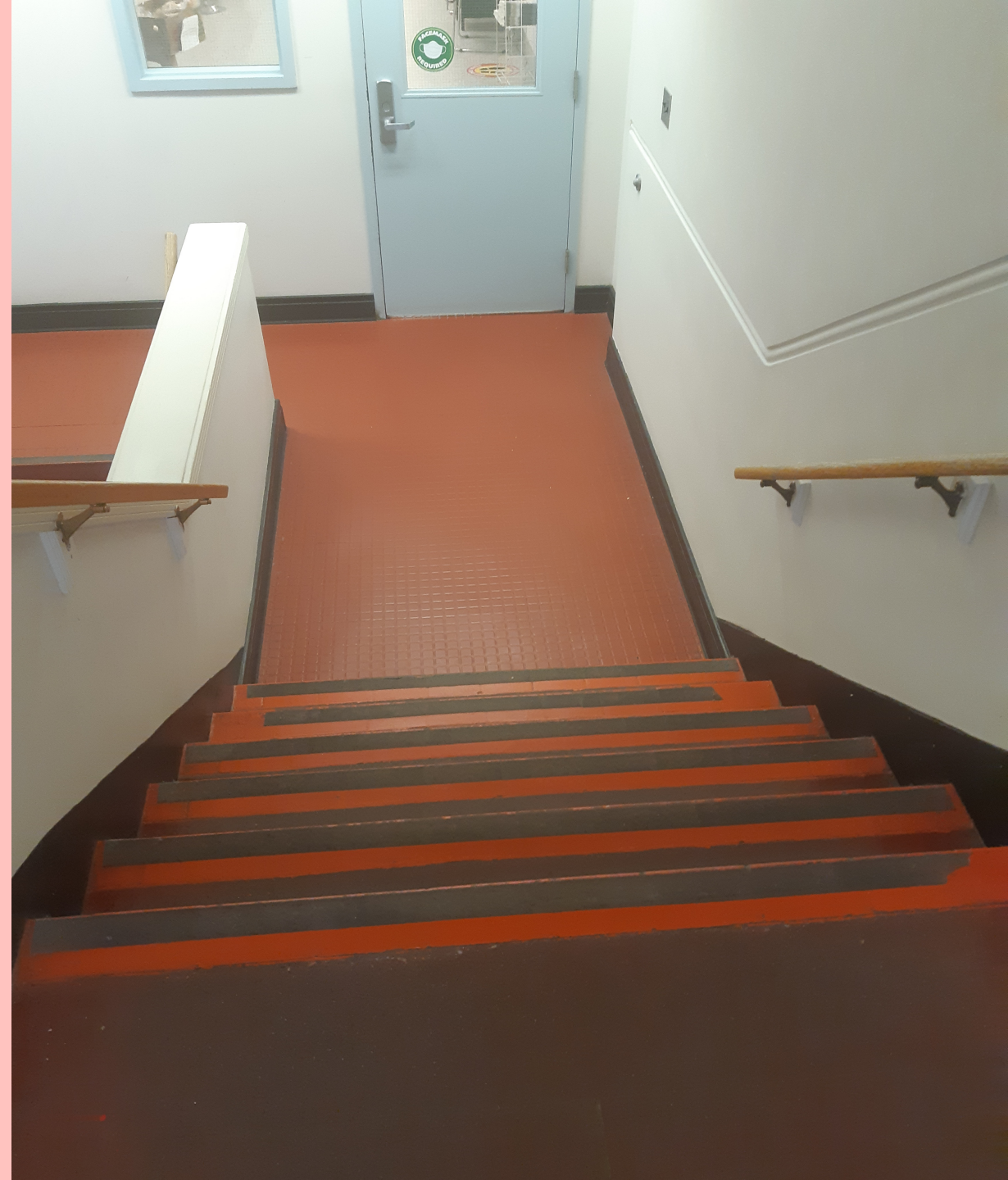


Image: Unison Shelter Participant

Applying Photovoice

- We used Photovoice, as an arts-based research method to understand shelter and service provision needs of older adults experiencing elder abuse.
- Participants use photography to record and reflect their experiences while promoting critical dialogue about relevant issues.

Image: Calgary Participant



Kerby Shelter Photovoice Art Exhibit

May 16, 2022

Funding provided by:
Justice Canada Victims and
Survivors of Crime Week



Built Environment



“This is the main entrance into our shelter. So, the first thing I want to say about this photo is that the architecture of this building is very original, unique and that it is nicely, this building is nicely embedded between other structures. And the buildings, on the neighboring buildings the entrances are quite plain looking and our entrance is pretty original and nice looking. Beautiful architecture...So I have a feeling of innovation and inspiration when I look at this. That it is not an abandoned and forgotten place, but a place where you can find a safe place. Where you can go when you're in that situation.”


Participant 5



Strengths

- Gave voice to individuals who rarely have their voice heard due to vulnerability and marginalization.
- An opportunity for participants to take time to reflect on their experiences in a meaningful way.
- A collaborative and action-oriented project that not only resulted in rich data but more importantly empowered the participants who engaged in the study.
- Photovoice can be modified according to participant needs.

Limitations

- Technology and accessibility barriers
 - Can be exclusive as not everyone wants to participate in the arts.
- 

SW Research & ABR

Both can:

- help to excavate and make heard silent facets of experience.
- draw connections between the micro and the macro.
- understand both stress and coping
- co-produce knowledge with participants.
- focus on strengths
- are social change oriented.
- have maximum impact on communities and service users

(Huss & Boss, 2022)

Closing Question

How would you implement arts-based research?

To learn more or
connect with us:

Dr. Christine Walsh
AIRP Calgary City Lead
cwalsh@ucalgary.ca

<https://www.sfu.ca/airp.html>

https://twitter.com/airp_vabe

