

# Thinking about space: A trauma-informed approach to qualitative research with older persons with experiences of homelessness

## Presenter

Diandra Serrano

## Co-authors

Émilie Cormier, Dyane Provost, Tamara Sussman

Valérie Bourgeois-Guérin, Christine Walsh, Atiya Mahmood, Sarah Canham



**SSHRC**  **CRSH**  
Social Sciences and Humanities Research Council of Canada  
Conseil de recherches en sciences humaines du Canada



Centre de recherche et d'expertise  
en gérontologie sociale

**UQÀM**



**McGill**



**UNIVERSITY OF  
CALGARY**

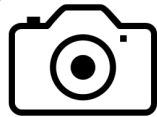


## Aging In the Right Place

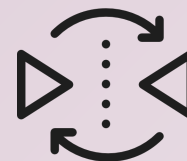
**Montreal interviews with clients**

**Recruitment**

**Data Collection**

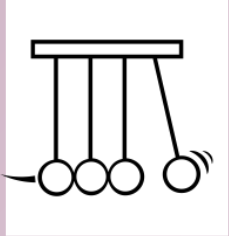


**Client Photovoice  
Interviews  
N=11**



# Theoretical Background

## *Trauma, Homelessness, and Aging*



### Cause & Consequence of homelessness

(Lalonde & Nadeau, 2012 )



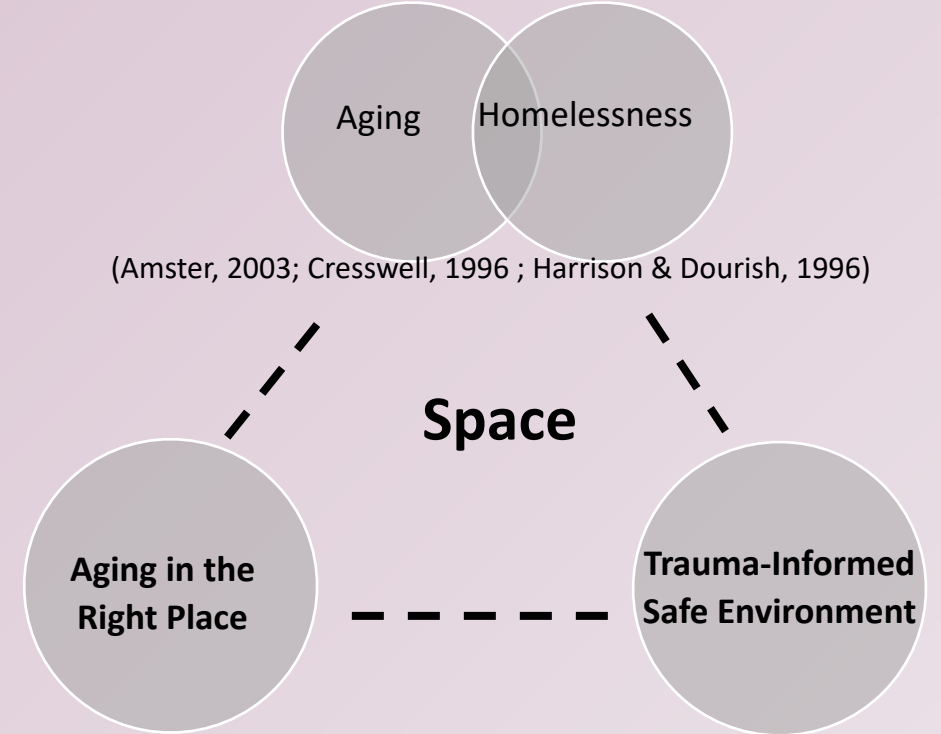
### Most prevalent: Complex interpersonal trauma

(Milot et al., 2018 )



### Accumulated trauma & later life exposure

(Cockersell, 2018; Deck & Platt, 2015; Lalonde & Nadeau, 2012; Kim & Ford, 2006)



OUT OF REACH



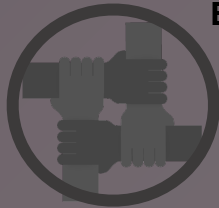
Safety  
Peer Support  
Cultural, Gender,  
Historical Issues



Trustworthiness  
& Transparency



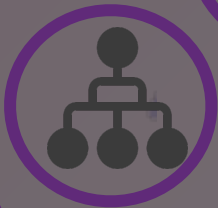
Collaboration  
& mutuality



Empowerment  
& Choice



Positionality



Redistributing Power



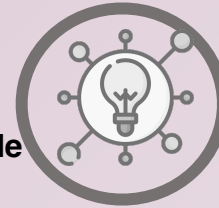
Transformation



In space over  
time



Changing  
Interview guide



Allowing for natural  
rhythms of story telling



Termination activity



*tangible*

Meet & Greet



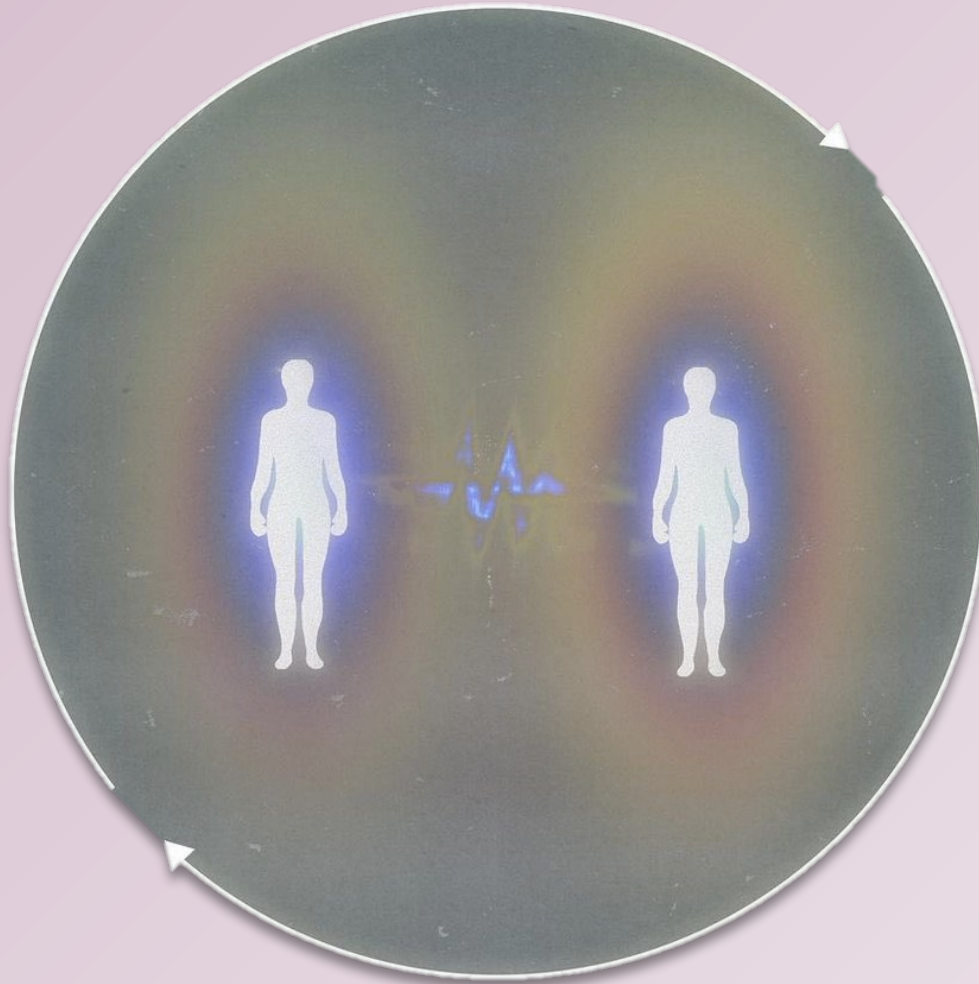
# Anchoring...

*“Ultimately, home is not a physical place. Ultimately, home is feeling safe, secure, capable ... inside myself. This is where the Anchoring in Space really [...] addresses a very basic human need to be seen, heard and accepted as is. Once I feel safe with you, and see you’re not trying to “make me fit into your agenda”, I might open up to you and tell you really what’s going on (Dyane Provost, author & Lived Expert).”*



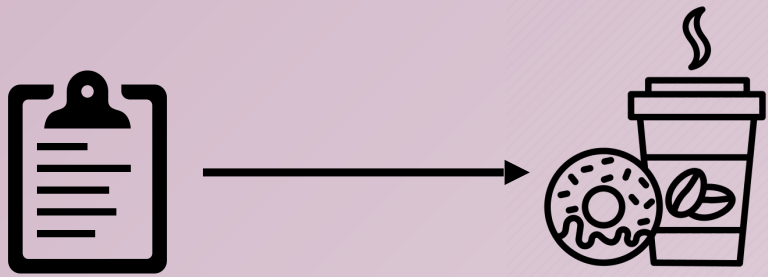
# FINDINGS

Attending to positionality through Sensing space

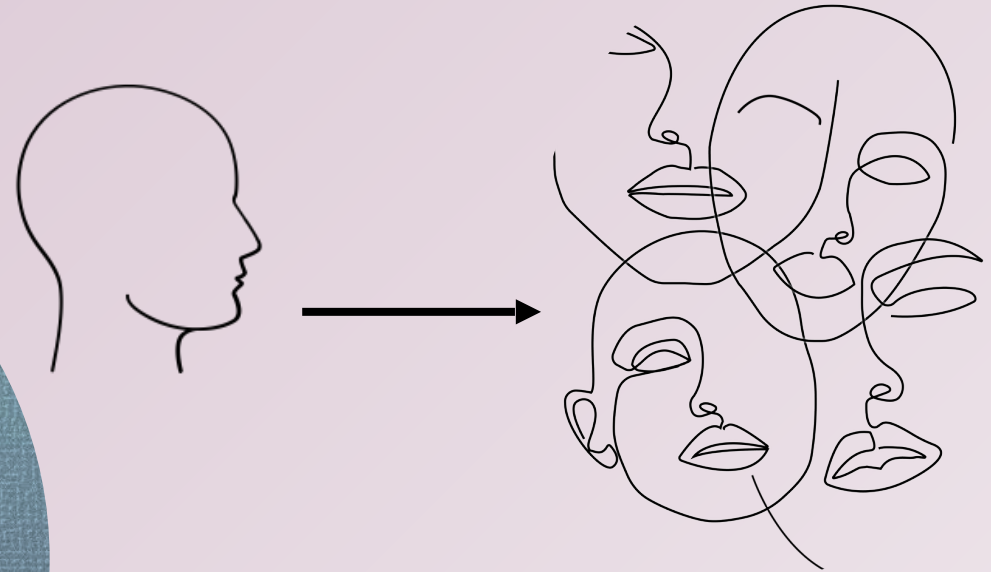
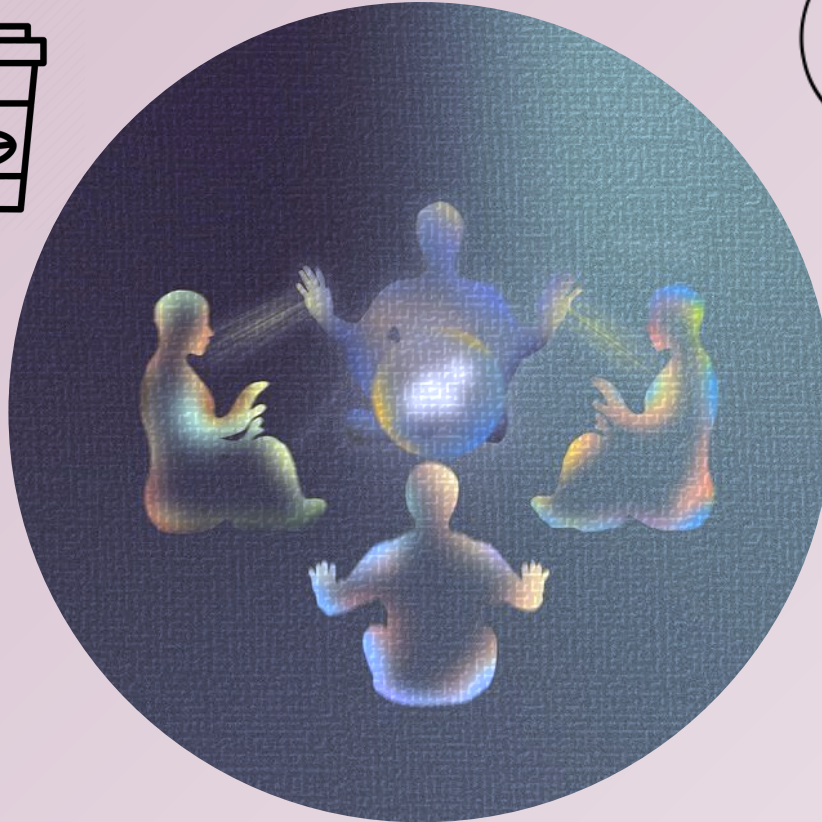


# FINDINGS

## Sensing an Intimately Shared Space



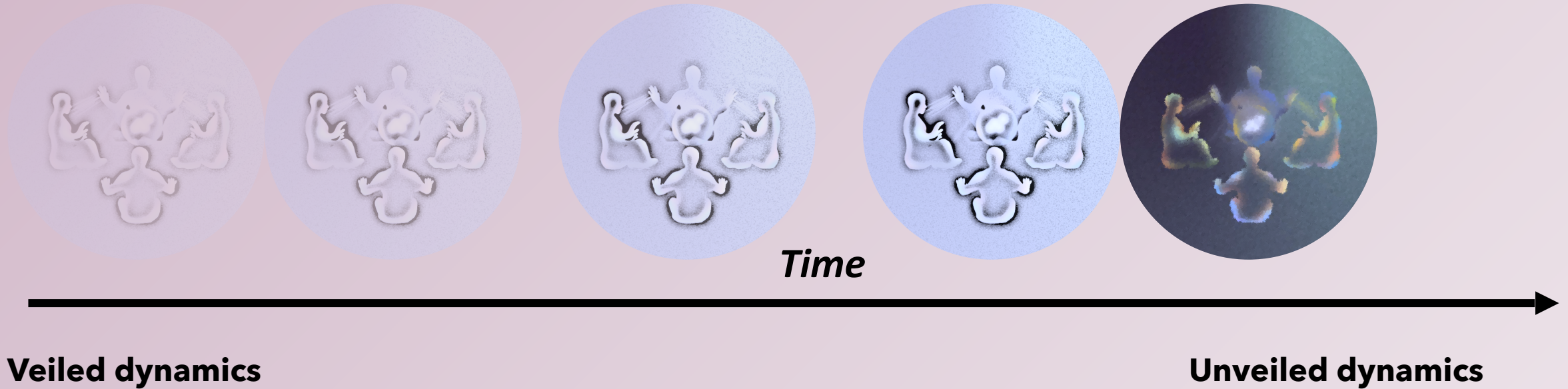
- Having a meet & greet
- Engaging in informal settings outside of interview
- Self-disclosure



- Beyond insider/outsider
- More sensitive to needs & experiences
- Mutual Trust & Collaboration

# FINDINGS

## Sensing Space over time





# FINDINGS

## Fostering Transformative Potential through Holding Space



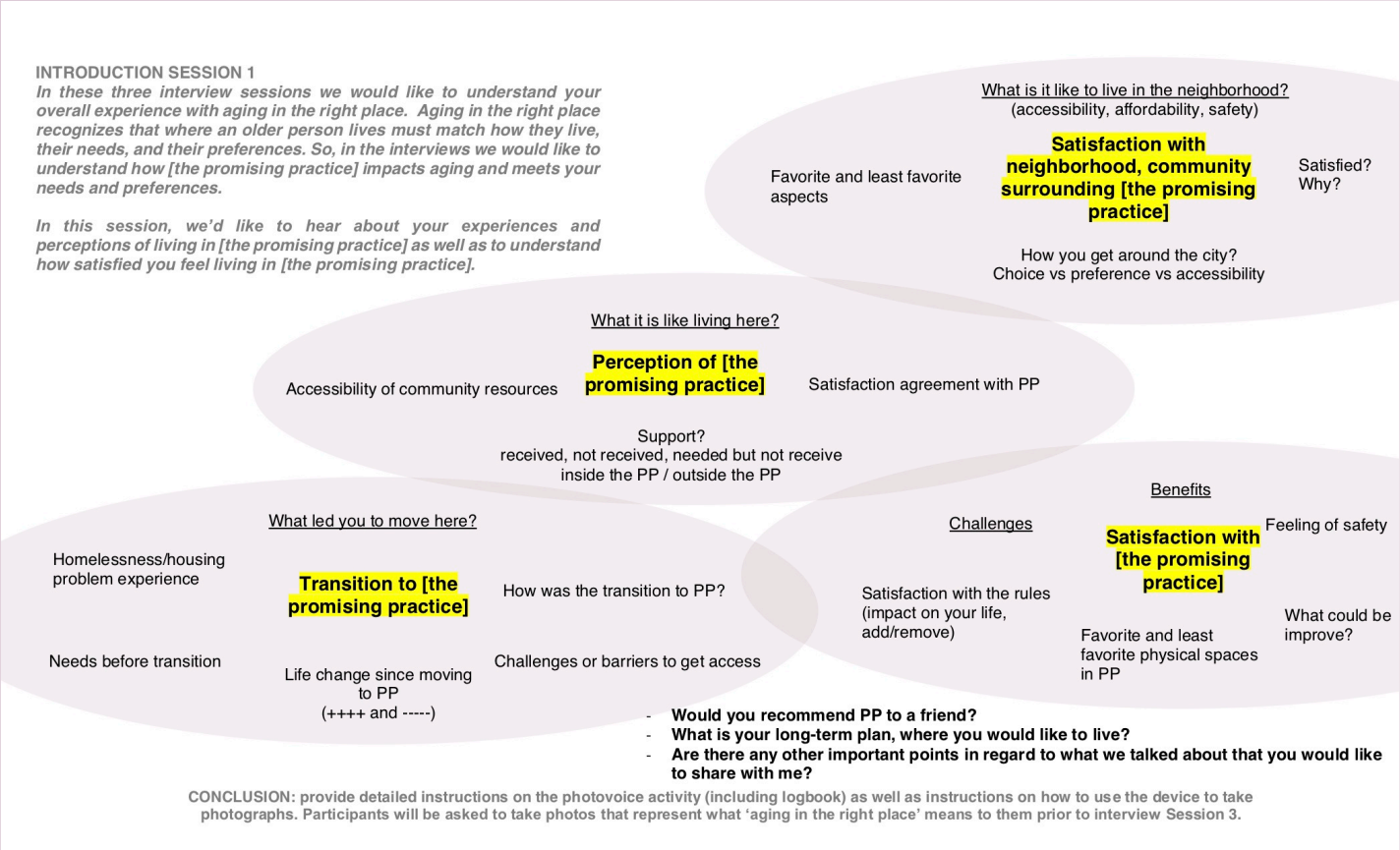
# FINDINGS

## Holding Presence in space



### Interview guide as a symbolic representation of relational space

List of questions – visual concept map  
Freed from paper – Present for participants



# FINDINGS

## *Holding a container in space*

Carl (First interview) “I was very sick [...] I was in the hospital for one month, [...] and I was out of breath, couldn’t breathe. ”

Carl (Second interview) “Today, yes I can walk up the stairs, no problem, three years, three summers, I managed this myself [...] I am proud of myself.”

The research experience as having “cleaned (Shane)” part of their story & having “planted a seed (Vincent)” for the future.



# Implications for Trauma-Informed research

Anchoring into  
relational space

Trauma-informed  
approach

Orientation towards participants' needs,  
experiences, and transformation



# Citations

Amster, R. (2003). Patterns of exclusion: Sanitizing space, criminalizing homelessness. *Social Justice*, 30(1 (91)), 195–221. <http://www.jstor.org/stable/29768172>

Cresswell, T. (1996). *In place/out of place: Geography, ideology, and transgression*. University of Minnesota Press.

Cockersell, D. P. (Ed.). (2018). Social exclusion, complex needs and Homelessness. In *Social exclusion, compound trauma and recovery: applying psychology, psychotherapy and PIE to homelessness and complex needs*. (pp. 13-25). Jessica Kingsley Publishers.

Deck, S. M., & Platt, P. A. (2015). Homelessness is traumatic: Abuse, victimization, and trauma histories of homeless men. *Journal of Aggression, Maltreatment & Trauma*, 24(9), 1022–1043. <https://doi.org/10.1080/10926771.2015.1074134>

Harrison, S., & Dourish, P. (1996). *Re-place-ing space: The roles of place and space in collaborative systems*. 10. <https://doi.org/10.1145/240080.240193>

Kim, M. M., & Ford, J. D. (2006). Trauma and post-traumatic stress among homeless men: A review of current research. *Journal of aggression, maltreatment & trauma*, 13(2), 1-22. [https://doi.org/10.1300/J146v13n02\\_01](https://doi.org/10.1300/J146v13n02_01)

Lalonde, F., & Nadeau, L. (2012). Risk and protective factors for comorbid posttraumatic stress disorder among homeless individuals in treatment for substance-related problems. *Journal of Aggression, Maltreatment & Trauma*, 21(6), 626–645. <https://doi.org/10.1080/10926771.2012.694401>

Lonbay, S., Pearson, A., Hamilton, E., Higgins, P., Foulkes, E., & Glascott, M. (2021). Trauma informed participatory research: Reflections on co-producing a research proposal. *Gateways: International Journal of Community Research and Engagement*, 14(1), 1-8. <https://doi.org/10.5130/ijcre.v14i1.7728>

Milot, T., Lemieux, R., Berthelot, N. et Collin-Vézina, D. (2018). Les pratiques sensibles au trauma. Dans T. Milot, D. Collin-Vézina et N. Godbout (dir.), *Trauma complexe: comprendre, évaluer et intervenir* (p. 251-272). Presses de l'Université du Québec. <https://doi.org/10.2307/j.ctv28683g.15>

Substance Abuse and Mental Health Services Administration (SAMSHA). SAMHSA's Concept of Trauma and Guidance for a Trauma-Informed Approach. HHS Publication No. (SMA) 14-4884. Rockville, MD: Substance Abuse and Mental Health Services Administration, 2014.

Sinko, L., & Saint Arnault, D. (2021). Photo-experiencing and reflective listening: A trauma-informed photo-elicitation method to explore day-to-day health