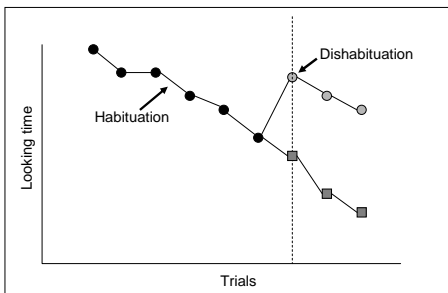


Perceptual Development

- Why study it?
 - to know what to expect
 - detecting/correcting problems
- How to study it?
 - babies are nonverbal

Preferential Looking

Habituation



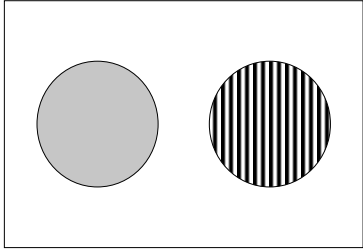
Conditioning

Sucking Patterns

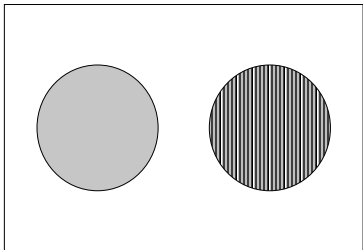
Vision

- visual acuity

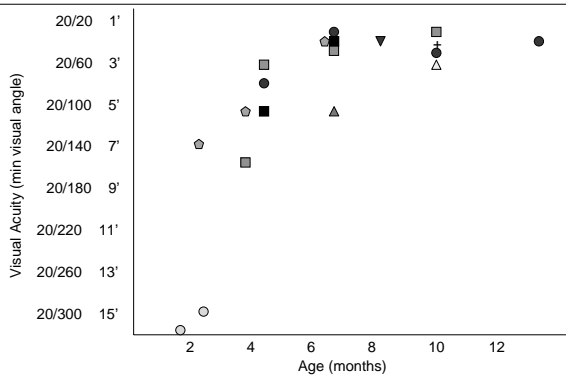
Preferential Looking

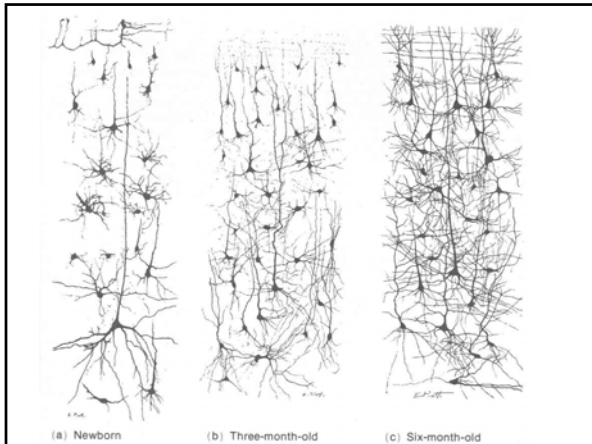


Preferential Looking



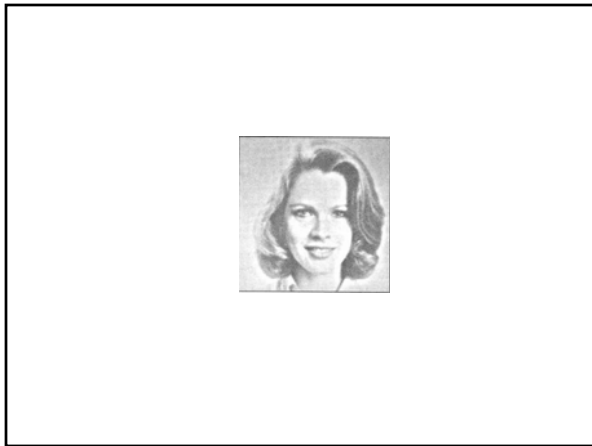
Visual Acuity





Vision

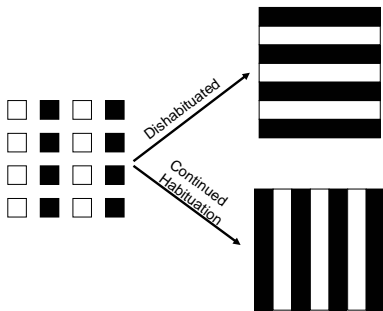
- visual acuity
 - preferential looking
 - visual evoked potentials
 - rods/cones development
- object perception



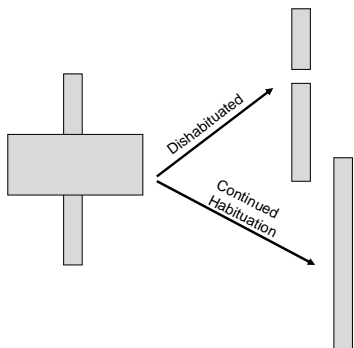
Vision

- visual acuity
 - preferential looking
 - visual evoked potentials
 - rods/cones development
- object perception
 - recognize mom
 - facial expressions
 - Gestalt Principles

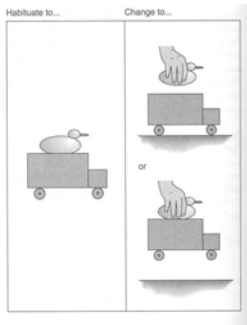
Grouping by Similarity



Good Continuation/Common Fate



Seperating Adjacent Objects



Vision

- depth perception

Visual Cliff

Vision

- depth perception
 - binocular disparity (3.5 months)
 - random-dot stereograms
 - other depth cues (5-7 months)
 - overlap, familiar size, linear perspective, etc.

Audition

- detection – better for high frequency
- sound localization
 - newborn – 80 dB rattle
 - < 9 weeks intensity differences
 - minimum audible angle
 - 8 weeks – 27 degrees
 - 1.5 years – 5 degrees
 - adult – 1 degree

Audition

- sound recognition
 - mother's voice – sucking pauses
- speech perception
 - cat-in-the-hat vs. dog-in-the-fog
 - native language
 - categorical perception (ba vs. pa) – sucking habituation
 - generalize across speakers – conditioned looking

Olfaction

- discriminating different smells
 - control vs. banana/vanilla vs. fish vs. rotten eggs

- mother's breast or axillary smell

Taste

- newborns sensitive to sweet taste
- somewhat sensitive to sour/bitter
- insensitive to salt until about 4 months

Perceptual Changes in the Elderly

- Vision
 - accommodation – presbyopia
 - pupil size
 - yellowing of lens and cornea
 - loss of visual acuity
 - useful field of view (UFOV)
- Hearing – loss mostly at higher frequencies
- Olfaction – greatly reduced although fruity smells somewhat spared
- Taste – salt and sweet somewhat spared
