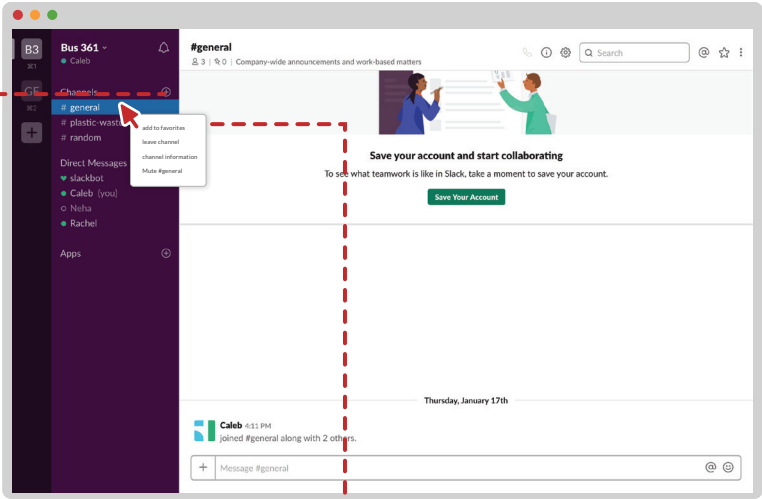


Adding Channel to Favorites

Add Channel to Favorite (V1).



Add Channel to Favorite through edit

**Trigger:**  
User clicks on the plus button next to the Channels title

**Feedback:**  
Background dims, and an overlay pop-up displays showing "create a channel / edit channels"

Add Channel to Favorite through right-click

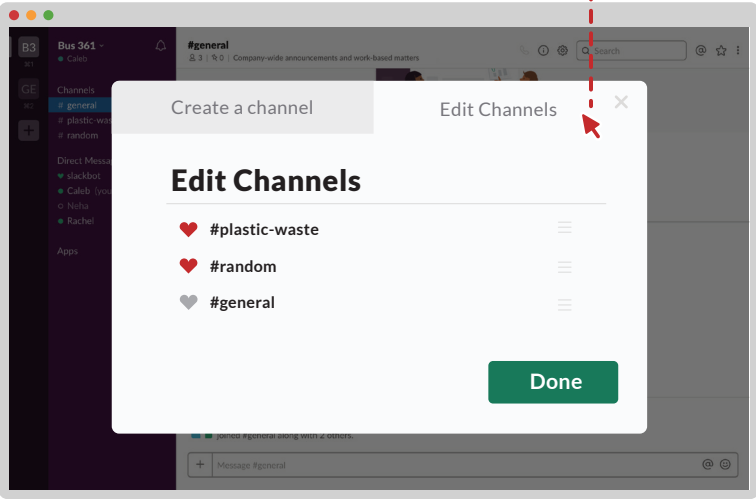
**Trigger:**  
Right click on the channel name

**Feedback:**  
Menu pops up, giving the user access to several options, including adding the channel to the users favorite list

Edit Channels.

**Trigger:**  
click the "Edit Channels" title

**Feedback:**  
shown all the channels

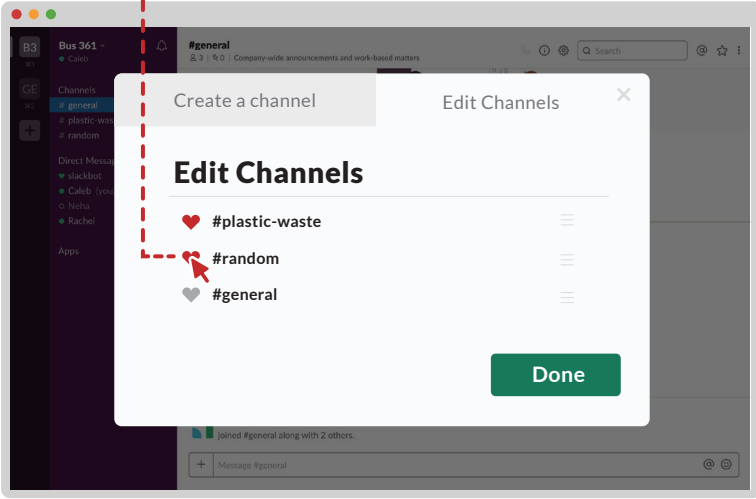


Select Channels to Favorite.

**Trigger:**  
user clicks the heart icon

**Feedback:**  
Users can multiple select favorite channels

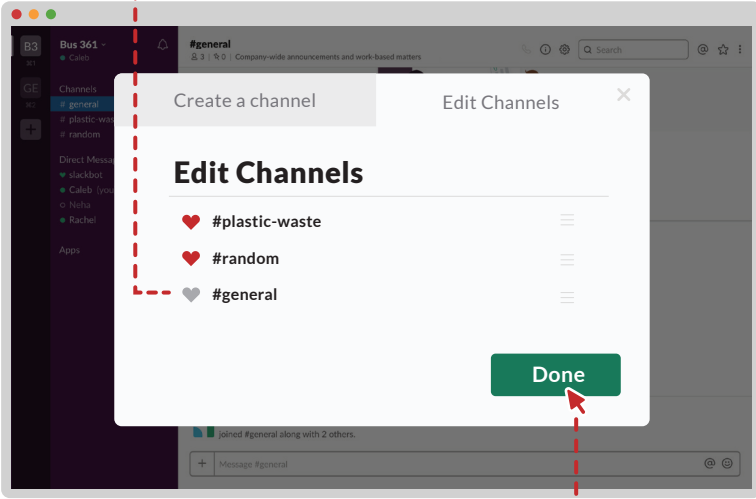
**Rules:**  
click the heart icon add the channel to favorite or un-click the heart icon if don't want to favorite the channel



Automatically Arrange Channels Order.

**Trigger:**  
favorited channels

**Feedback:**  
the favorite channel will automatically shown on the top on the channels list

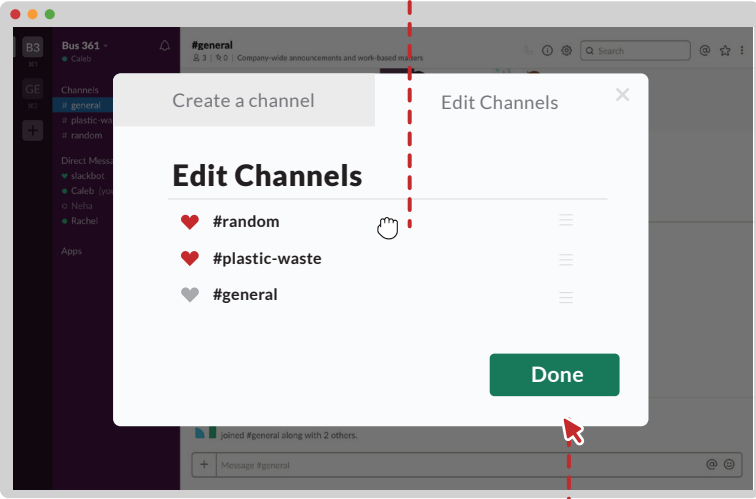


Drag Channels to Rearrange Order.

**Trigger:**  
user drag the channel to move up or down to rearrange order

**Feedback:**  
shown the channels order based on user arrange

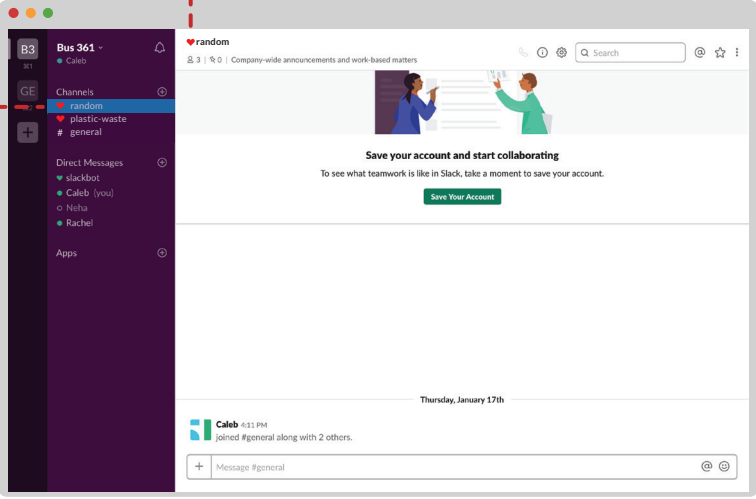
**Rules:**  
drag and release the channel



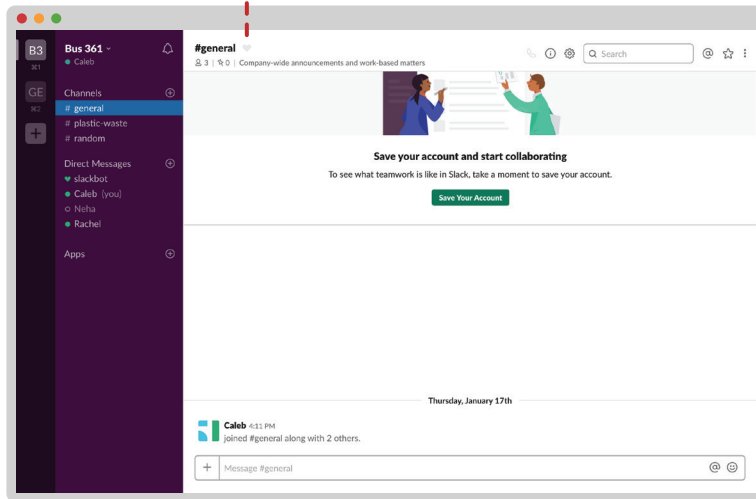
Favorite Channels order.

**Feedback:**  
the favorite channels shown above normal channel

**Rules:**  
users can un-click the heart icon to un-favorite the channel



Add Channel to Favorite (V2).

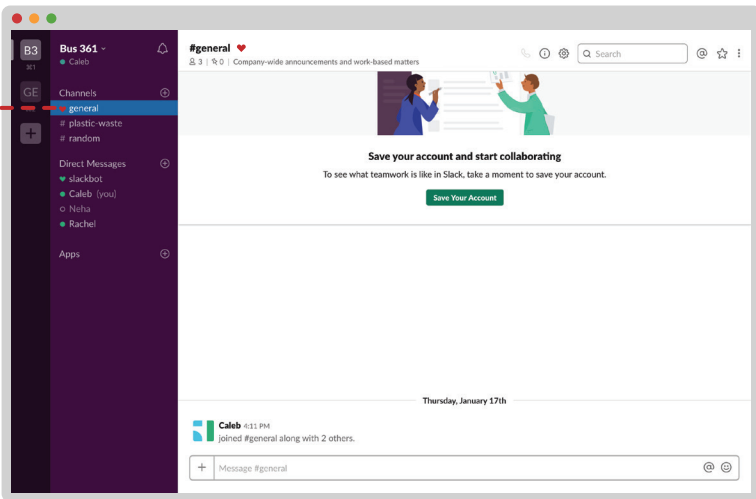


Add Channel to Favorite through icon.

**Trigger:**  
user click the heart icon

**Feedback:**  
the heart icon will fill color and the channel will become favorite

**Rules:**  
users can un-click the heart icon to un-favorite the channel



Favorite Channel.

**Feedback:**  
favorite channel will shown a heart icon next to the channel title

Legend

- Click
- Decision mode, determines the user flow
- Screen flow
- Microinteraction details