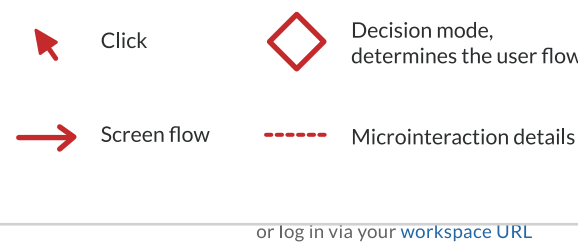


Add a workspace (V1).

Join a workspace starts with an Email sign-in instead of the workspace URL to make it easier for users to recall their account information in a more step-by-step approach

Minimalist design—easy to see what options there are because slack offers so many options at one time that users get confused

Legend



or log in via your workspace URL

Sending a magic link.

Trigger: user clicks the button

Feedback: sends an email to the user that allows them to log in automatically without entering a password

Rules: sends users to another page, letting them know they need to check and verify their email

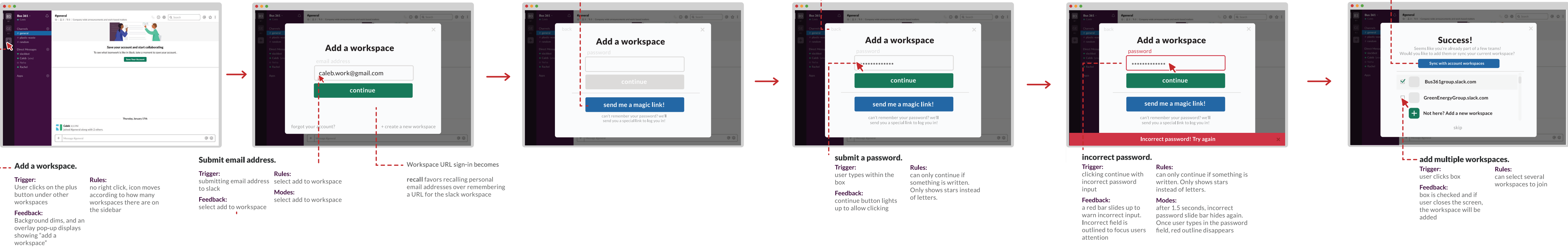
back button allows people to quickly retrace their footsteps and choose alternative options (such as logging in via workspace instead)

sync across platforms.

Trigger: user clicks button

Feedback: takes user to a new screen, loading and syncing all devices

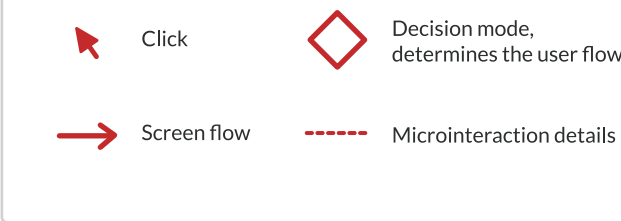
Rules: only accessible if users have an account with slack (logged in)



Add a workspace (V2).

Instead of logging into several workspaces through multiple emails, having an overarching account that contains all workspaces under multiple emails can make the whole sign in process easier. Signing into multiple devices under one account makes it easier for users to join all their workspaces quickly.

Legend



Add a workspace (V2).

